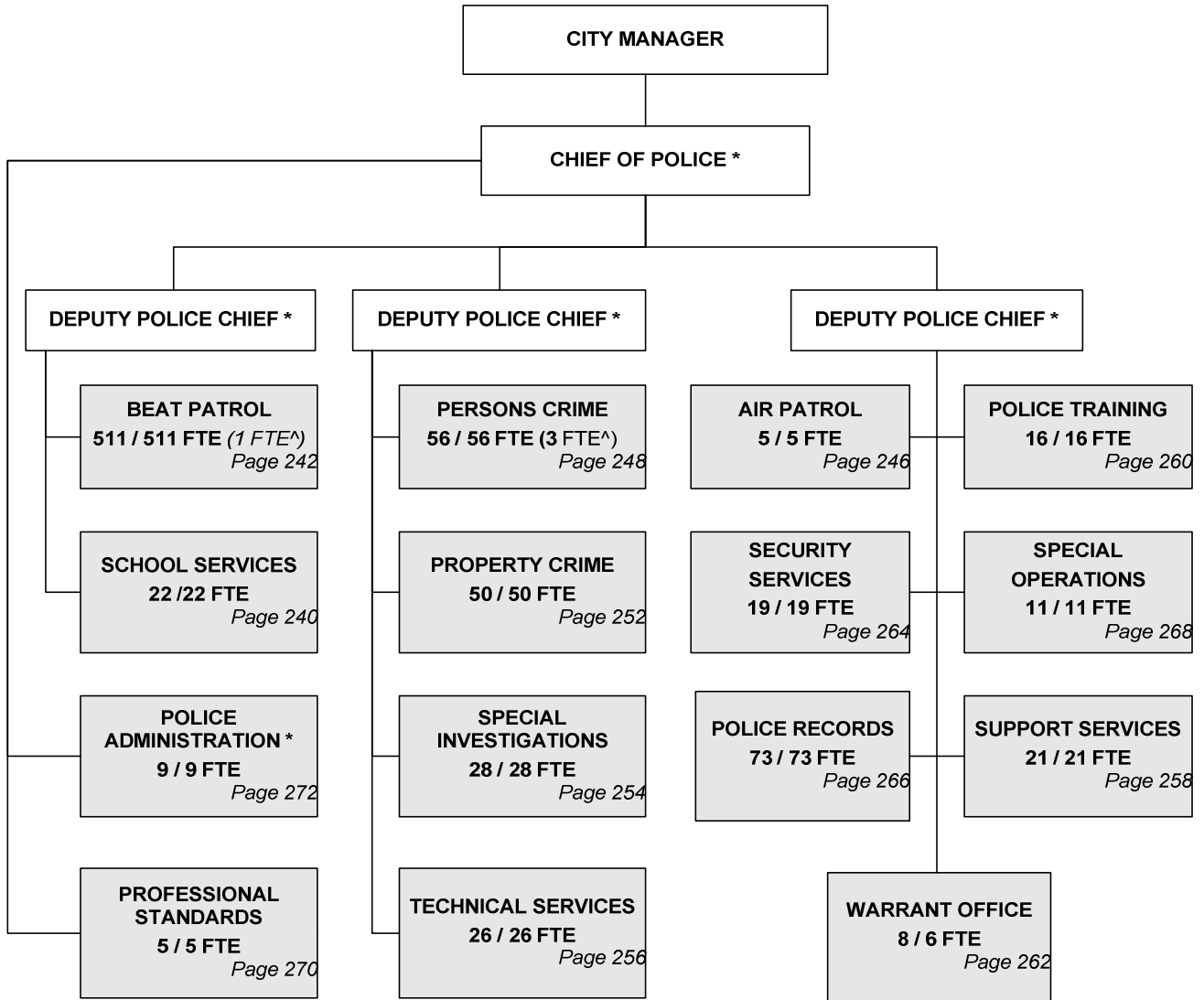


CITY OF WICHITA 2009/2010 ANNUAL BUDGET

Departmental Organization Chart

POLICE



* Positions included with Police Administration
 ^ Non-locally funded positions

Total Positions/Full-Time Equivalent = **860 / 858 FTE** (4 FTE^)



The Keeper of the Plains sculpture raises his face toward the sky and lifts his arms in supplication to the Great Spirit.

THE KEEPER OF THE PLAINS...

A symbol of Wichita and Sedgwick County, this majestic 44-foot sculpture was designed by Blackbear Bosin (1921-1980), a Kiowa-Comanche and internationally recognized artist, muralist and designer. On May 18, 1974 a ceremony took place to dedicate the Keeper, which was designated as a Wichita Bicentennial project. The project was rededicated to the community on the 33rd anniversary of that Bicentennial project date. The 5-ton sculpture was placed at the confluence of the little and big Arkansas Rivers, which is considered a sacred site by Native Americans and was home to the Wichita tribe for many years.

A 2006 project to elevate the sculpture on a 30-foot rock promontory so it could be seen from farther away was completed and officially dedicated by Mayor Carl Brewer and the City Council on May 18, 2007.

CITY OF WICHITA 2009/2010 ANNUAL BUDGET

FUND **100 GENERAL**
DEPARTMENT **08 POLICE**

COMBINED DETAIL SUMMARY

		2007 ACTUAL	2008 ADOPTED	2008 REVISED	2009 ADOPTED	2010 APPROVED
110	Regular Salaries	41,700,365	44,326,000	44,411,087	46,776,637	47,577,373
120	Special Salaries	155,498	128,060	132,947	133,838	136,214
130	Overtime	1,464,995	758,580	786,080	786,080	786,080
140	Employee Benefits	14,580,229	16,046,830	15,432,926	16,166,221	17,064,076
150	Shrinkage	0	0	0	-1,249,876	-1,267,620
Subtotal Salaries and Benefits		57,901,087	61,259,470	60,763,040	62,612,900	64,296,123
210	Utilities	100,521	145,790	142,920	142,920	142,920
220	Communications	175,539	173,620	176,985	176,585	177,385
230	Transportation and Training	85,906	90,740	92,140	82,640	82,540
240	Insurance	225,270	257,670	235,530	245,530	257,069
250	Professional Services	536,551	453,990	430,380	434,380	434,380
260	Data Processing	1,348,458	1,308,210	1,306,330	1,439,965	1,439,965
270	Equipment Charges	3,721,456	3,746,490	4,267,930	4,616,640	4,616,640
280	Buildings and Grounds Charges	83,982	81,000	90,750	82,750	82,750
290	Other Contractuals	239,684	252,300	276,170	271,170	271,170
Subtotal Contractuals		6,517,367	6,509,810	7,019,135	7,492,580	7,504,819
310	Office Supplies	48,429	56,880	55,720	55,720	55,720
320	Clothing and Towels	425,032	433,630	467,930	497,930	497,930
330	Chemicals	3,446	4,650	8,500	8,500	8,500
340	Equipment Parts and Supplies	151,483	184,150	154,000	154,000	154,000
350	Materials	298	2,000	1,000	1,000	1,000
370	Building Parts and Materials	4,140	1,460	1,460	1,460	1,460
380	Non-capitalizable Equipment	168,562	157,480	165,970	173,970	173,970
390	Other Commodities	47,990	53,230	52,620	48,620	53,900
Subtotal Commodities		849,380	893,480	907,200	941,200	946,480
410	Land	0	0	0	0	0
420	Buildings	0	0	0	0	0
430	Improvements Other Than Bldgs.	0	0	0	0	0
440	Office Equipment	0	0	25,000	0	0
450	Vehicular Equipment	0	0	150,000	0	0
460	Operating Equipment	0	0	0	0	0
Subtotal Capital Outlay		0	0	175,000	0	0
510	Interfund Transfers	96,232	84,950	64,531	64,531	64,531
520	Debt Service	0	0	0	0	0
530	Other Non-operating Expenses	0	0	100,000	100,000	100,000
540	Inventory Accounts	0	0	0	0	0
550	Projects Closing Entries	0	0	0	0	0
Subtotal Other		96,232	84,950	164,531	164,531	164,531
TOTAL		65,364,066	68,747,710	69,028,906	71,211,211	72,911,953

CITY OF WICHITA 2009/2010 ANNUAL BUDGET

DEPARTMENT	08 POLICE
FUND	100 GENERAL FUND
SERVICE	010202 SCHOOL SERVICES
GOAL	1 SAFE AND SECURE

		2007 ACTUAL	2008 ADOPTED	2008 REVISED	2009 ADOPTED	2010 APPROVED
110	Regular Salaries	988,687	1,194,930	1,180,486	1,246,290	1,302,073
120	Special Salaries	1,647	2,000	2,700	2,700	2,700
130	Overtime	15,270	10,000	17,500	17,500	17,500
140	Employee Benefits	375,733	483,130	454,648	493,443	529,535
150	Shrinkage	0	0	0	0	0
Subtotal Salaries and Benefits		1,381,336	1,690,060	1,655,334	1,759,933	1,851,808
210	Utilities	0	0	0	0	0
220	Communications	1	0	0	0	0
230	Transportation and Training	7,548	8,000	8,000	8,000	8,000
240	Insurance	7,680	7,680	8,040	8,040	8,040
250	Professional Services	0	0	0	0	0
260	Data Processing	0	28,140	26,630	26,630	26,630
270	Equipment Charges	0	257,400	257,400	262,080	262,080
280	Buildings and Grounds Charges	0	0	0	0	0
290	Other Contractuals	0	0	0	0	0
Subtotal Contractuals		15,229	301,220	300,070	304,750	304,750
310	Office Supplies	0	0	0	0	0
320	Clothing and Towels	0	0	0	0	0
330	Chemicals	0	0	0	0	0
340	Equipment Parts and Supplies	0	0	0	0	0
350	Materials	0	0	0	0	0
370	Building Parts and Materials	0	0	0	0	0
380	Non-capitalizable Equipment	0	0	0	0	0
390	Other Commodities	0	5,280	5,280	5,280	10,560
Subtotal Commodities		0	5,280	5,280	5,280	10,560
410	Land	0	0	0	0	0
420	Buildings	0	0	0	0	0
430	Improvements Other Than Bldgs.	0	0	0	0	0
440	Office Equipment	0	0	0	0	0
450	Vehicular Equipment	0	0	0	0	0
460	Operating Equipment	0	0	0	0	0
Subtotal Capital Outlay		0	0	0	0	0
510	Interfund Transfers	0	0	0	0	0
520	Debt Service	0	0	0	0	0
530	Other Non-operating Expenses	0	0	0	0	0
540	Inventory Accounts	0	0	0	0	0
550	Projects Closing Entries	0	0	0	0	0
Subtotal Other		0	0	0	0	0
TOTAL		1,396,565	1,996,560	1,960,684	2,069,963	2,167,118

CITY OF WICHITA 2009/2010 ANNUAL BUDGET

DEPARTMENT	08 POLICE
FUND	100 GENERAL FUND
SERVICE	010202 SCHOOL SERVICES
GOAL	1 SAFE AND SECURE

POSITION TITLE	2007	2008	2009	RANGE	2008 ADOPTED	2008 REVISED	2009 ADOPTED	2010 APPROVED
Police Officer	22	22	22	723	1,171,150	1,158,000	1,222,553	1,277,905
Subtotal	22	22	22		1,171,150	1,158,000	1,222,553	1,277,905
Other Regular Salaries					23,780	22,486	23,737	24,168
Total Regular Salaries					1,194,930	1,180,486	1,246,290	1,302,073
Total Special Salaries					2,000	2,700	2,700	2,700
TOTAL AUTHORIZED POSITIONS	22	22	22					

CITY OF WICHITA 2009/2010 ANNUAL BUDGET

DEPARTMENT	08 POLICE
FUND	100 GENERAL FUND
SERVICE	010301 BEAT PATROL
GOAL	1 SAFE AND SECURE

		2007 ACTUAL	2008 ADOPTED	2008 REVISED	2009 ADOPTED	2010 APPROVED
110	Regular Salaries	25,133,401	26,842,470	26,685,328	28,219,955	28,755,783
120	Special Salaries	41,696	21,440	21,800	21,800	21,800
130	Overtime	799,051	570,960	590,960	590,960	590,960
140	Employee Benefits	9,076,715	9,979,880	9,568,465	9,961,894	10,411,558
150	Shrinkage	0	0	0	-754,637	-769,465
Subtotal Salaries and Benefits		35,050,863	37,414,750	36,866,553	38,039,972	39,010,636
210	Utilities	19,317	40,480	40,470	40,470	40,470
220	Communications	23,681	20,760	20,455	20,455	20,455
230	Transportation and Training	2	0	0	0	0
240	Insurance	116,730	116,730	121,860	121,860	123,273
250	Professional Services	203	40	40	40	40
260	Data Processing	652,549	597,610	595,240	684,486	684,486
270	Equipment Charges	3,293,983	2,973,820	3,438,250	3,781,490	3,781,490
280	Buildings and Grounds Charges	52,680	59,370	66,620	58,620	58,620
290	Other Contractuals	43,863	39,560	45,760	45,760	45,760
Subtotal Contractuals		4,203,008	3,848,370	4,328,695	4,753,181	4,754,594
310	Office Supplies	8,434	11,650	11,250	11,250	11,250
320	Clothing and Towels	0	1,200	500	500	500
330	Chemicals	2,951	3,750	6,700	6,700	6,700
340	Equipment Parts and Supplies	12,008	1,550	2,750	2,750	2,750
350	Materials	126	0	0	0	0
370	Building Parts and Materials	1,339	1,460	1,460	1,460	1,460
380	Non-capitalizable Equipment	2,722	6,920	7,870	7,870	7,870
390	Other Commodities	10,238	13,690	13,690	13,690	13,690
Subtotal Commodities		37,818	40,220	44,220	44,220	44,220
410	Land	0	0	0	0	0
420	Buildings	0	0	0	0	0
430	Improvements Other Than Bldgs.	0	0	0	0	0
440	Office Equipment	0	0	0	0	0
450	Vehicular Equipment	0	0	150,000	0	0
460	Operating Equipment	0	0	0	0	0
Subtotal Capital Outlay		0	0	150,000	0	0
510	Interfund Transfers	11,282	0	0	0	0
520	Debt Service	0	0	0	0	0
530	Other Non-operating Expenses	0	0	0	0	0
540	Inventory Accounts	0	0	0	0	0
550	Projects Closing Entries	0	0	0	0	0
Subtotal Other		11,282	0	0	0	0
TOTAL		39,302,971	41,303,340	41,389,468	42,837,373	43,809,450

CITY OF WICHITA 2009/2010 ANNUAL BUDGET

DEPARTMENT	08 POLICE
FUND	100 GENERAL FUND
SERVICE	010301 BEAT PATROL
GOAL	1 SAFE AND SECURE

POSITION TITLE	2007	2008	2009	RANGE	2008 ADOPTED	2008 REVISED	2009 ADOPTED	2010 APPROVED
Police Captain	4	4	4	D61	296,130	314,225	314,225	314,225
Police Lieutenant	16	16	16	727	1,167,450	1,179,257	1,256,722	1,287,306
Police Sergeant	52	52	52	725	3,604,640	3,597,941	3,834,672	3,927,602
Police Officer	408	408	408	723	19,797,570	19,552,062	20,709,527	21,090,500
Station Clerk	4	4	4	710	169,450	169,370	176,145	176,145
Service Officer I	8	8	8	620	293,740	302,187	317,218	320,288
Secretary	4	4	4	619	118,770	136,722	145,685	149,249
Customer Service Clerk I	4	4	4	617	120,310	122,936	129,186	130,536
Clerk III	10	10	10	617	268,900	270,336	288,006	295,106
Subtotal	510	510	510		25,836,960	25,645,036	27,171,386	27,690,957
Other Regular Salaries					1,005,510	1,040,292	1,048,569	1,064,826
Total Regular Salaries					26,842,470	26,685,328	28,219,955	28,755,783
Total Special Salaries					21,440	21,800	21,800	21,800
TOTAL AUTHORIZED POSITIONS	510	510	510					

CITY OF WICHITA 2009/2010 ANNUAL BUDGET

DEPARTMENT	08 POLICE
FUND	290 FEDERAL GRANTS
SERVICE	010301 BEAT PATROL
GOAL	1 SAFE AND SECURE

		2007 ACTUAL	2008 ADOPTED	2008 REVISED	2009 ADOPTED	2010 APPROVED
110	Regular Salaries	46,525	46,210	46,155	49,121	50,340
120	Special Salaries	0	0	0	0	0
130	Overtime	0	0	0	0	0
140	Employee Benefits	20,172	12,500	20,259	21,481	22,839
150	Shrinkage	0	0	0	0	0
Subtotal Salaries and Benefits		66,697	58,710	66,414	70,602	73,179
210	Utilities	0	0	0	0	0
220	Communications	0	0	0	0	0
230	Transportation and Training	0	0	0	0	0
240	Insurance	0	0	0	0	0
250	Professional Services	0	0	0	0	0
260	Data Processing	0	0	0	0	0
270	Equipment Charges	9,841	11,250	11,250	11,250	11,250
280	Buildings and Grounds Charges	0	0	0	0	0
290	Other Contractuals	0	0	0	0	0
Subtotal Contractuals		9,841	11,250	11,250	11,250	11,250
310	Office Supplies	0	0	0	0	0
320	Clothing and Towels	0	0	0	0	0
330	Chemicals	0	0	0	0	0
340	Equipment Parts and Supplies	868	0	0	0	0
350	Materials	0	0	0	0	0
370	Building Parts and Materials	0	0	0	0	0
380	Non-capitalizable Equipment	0	0	0	0	0
390	Other Commodities	0	0	0	0	0
Subtotal Commodities		868	0	0	0	0
410	Land	0	0	0	0	0
420	Buildings	0	0	0	0	0
430	Improvements Other Than Bldgs.	0	0	0	0	0
440	Office Equipment	0	0	0	0	0
450	Vehicular Equipment	0	0	0	0	0
460	Operating Equipment	0	0	0	0	0
Subtotal Capital Outlay		0	0	0	0	0
510	Interfund Transfers	0	0	0	0	0
520	Debt Service	0	0	0	0	0
530	Other Non-operating Expenses	0	0	0	0	0
540	Inventory Accounts	0	0	0	0	0
550	Projects Closing Entries	0	0	0	0	0
Subtotal Other		0	0	0	0	0
TOTAL		77,406	69,960	77,664	81,852	84,429

CITY OF WICHITA 2009/2010 ANNUAL BUDGET

DEPARTMENT	08	POLICE
FUND	290	FEDERAL GRANTS
SERVICE	010301	BEAT PATROL
GOAL	1	SAFE AND SECURE

POSITION TITLE	2007	2008	2009	RANGE	2008 ADOPTED	2008 REVISED	2009 ADOPTED	2010 APPROVED
Police Officer	1	1	1	723	46,210	46,155	49,121	50,340
Total Regular Salaries	1	1	1		46,210	46,155	49,121	50,340
TOTAL AUTHORIZED POSITIONS	1	1	1					

CITY OF WICHITA 2009/2010 ANNUAL BUDGET

DEPARTMENT	08 POLICE
FUND	100 GENERAL FUND
SERVICE	010302 AIR PATROL
GOAL	1 SAFE AND SECURE

		2007 ACTUAL	2008 ADOPTED	2008 REVISED	2009 ADOPTED	2010 APPROVED
110	Regular Salaries	297,170	304,820	322,982	338,419	343,611
120	Special Salaries	1,219	750	750	750	750
130	Overtime	4,084	0	0	0	0
140	Employee Benefits	107,655	116,760	102,921	109,304	115,004
150	Shrinkage	0	0	0	-13,756	-13,388
Subtotal Salaries and Benefits		410,128	422,330	426,653	434,717	445,977
210	Utilities	8,545	14,100	12,000	12,000	12,000
220	Communications	2,760	1,530	2,630	2,630	2,630
230	Transportation and Training	13,054	25,600	25,600	14,200	14,200
240	Insurance	37,600	70,000	40,000	50,000	60,000
250	Professional Services	377	220	220	220	220
260	Data Processing	6,072	5,260	5,260	6,565	6,565
270	Equipment Charges	34,784	47,950	47,950	47,950	47,950
280	Buildings and Grounds Charges	2,069	240	240	240	240
290	Other Contractuals	5,463	2,060	2,560	2,560	2,560
Subtotal Contractuals		110,724	166,960	136,460	136,365	146,365
310	Office Supplies	475	400	400	400	400
320	Clothing and Towels	0	0	0	0	0
330	Chemicals	0	0	0	0	0
340	Equipment Parts and Supplies	117,669	120,000	125,000	125,000	125,000
350	Materials	0	0	0	0	0
370	Building Parts and Materials	0	0	0	0	0
380	Non-capitalizable Equipment	5,742	0	0	0	0
390	Other Commodities	3,263	450	450	450	450
Subtotal Commodities		127,148	120,850	125,850	125,850	125,850
410	Land	0	0	0	0	0
420	Buildings	0	0	0	0	0
430	Improvements Other Than Bldgs.	0	0	0	0	0
440	Office Equipment	0	0	0	0	0
450	Vehicular Equipment	0	0	0	0	0
460	Operating Equipment	0	0	0	0	0
Subtotal Capital Outlay		0	0	0	0	0
510	Interfund Transfers	50,000	50,000	50,000	50,000	50,000
520	Debt Service	0	0	0	0	0
530	Other Non-operating Expenses	0	0	0	0	0
540	Inventory Accounts	0	0	0	0	0
550	Projects Closing Entries	0	0	0	0	0
Subtotal Other		50,000	50,000	50,000	50,000	50,000
TOTAL		698,000	760,140	738,963	746,932	768,192

CITY OF WICHITA 2009/2010 ANNUAL BUDGET

DEPARTMENT	08 POLICE
FUND	100 GENERAL FUND
SERVICE	010302 AIR PATROL
GOAL	1 SAFE AND SECURE

POSITION TITLE	2007	2008	2009	RANGE	2008 ADOPTED	2008 REVISED	2009 ADOPTED	2010 APPROVED
Police Lieutenant	1	1	1	727	73,960	74,825	79,757	81,681
Police Sergeant*	0	1	1	725	0	70,833	75,502	77,323
Police Officer*	3	2	2	723	164,130	107,691	113,327	114,644
Helicopter Mechanic	1	1	1	627	52,810	52,941	52,941	52,941
Subtotal	5	5	5		290,900	306,290	321,527	326,589
Other Regular Salaries					13,920	16,692	16,892	17,022
Total Regular Salaries					304,820	322,982	338,419	343,611
Total Special Salaries					750	750	750	750
TOTAL AUTHORIZED POSITIONS	5	5	5					

* One Police Officer position is reclassified to a Police Sergeant in the 2008 Revised Budget.

CITY OF WICHITA 2009/2010 ANNUAL BUDGET

DEPARTMENT	08 POLICE
FUND	100 GENERAL FUND
SERVICE	010401 PERSONS CRIME INVESTIGATION
GOAL	1 SAFE AND SECURE

		2007 ACTUAL	2008 ADOPTED	2008 REVISED	2009 ADOPTED	2010 APPROVED
110	Regular Salaries	2,951,123	3,085,920	3,207,542	3,377,427	3,429,085
120	Special Salaries	28,864	24,000	24,000	24,000	24,000
130	Overtime	245,892	116,070	116,070	116,070	116,070
140	Employee Benefits	1,064,196	1,143,080	1,153,646	1,209,206	1,271,660
150	Shrinkage	0	0	0	-91,350	-89,341
Subtotal Salaries and Benefits		4,290,075	4,369,070	4,501,258	4,635,353	4,751,474
210	Utilities	0	0	0	0	0
220	Communications	17,106	14,720	14,720	14,720	14,720
230	Transportation and Training	1,000	1,300	1,800	1,800	1,800
240	Insurance	14,720	14,720	15,410	15,410	15,410
250	Professional Services	45,011	40,150	45,000	45,000	45,000
260	Data Processing	114,120	97,350	99,350	114,631	114,631
270	Equipment Charges	116,190	117,320	121,180	121,180	121,180
280	Buildings and Grounds Charges	0	0	0	0	0
290	Other Contractuals	10,692	11,210	11,260	11,260	11,260
Subtotal Contractuals		318,839	296,770	308,720	324,001	324,001
310	Office Supplies	2,624	2,800	3,100	3,100	3,100
320	Clothing and Towels	0	0	0	0	0
330	Chemicals	0	0	0	0	0
340	Equipment Parts and Supplies	5,304	4,500	4,500	4,500	4,500
350	Materials	36	0	0	0	0
370	Building Parts and Materials	11	0	0	0	0
380	Non-capitalizable Equipment	486	1,800	2,000	2,000	2,000
390	Other Commodities	582	1,300	1,300	1,300	1,300
Subtotal Commodities		9,043	10,400	10,900	10,900	10,900
410	Land	0	0	0	0	0
420	Buildings	0	0	0	0	0
430	Improvements Other Than Bldgs.	0	0	0	0	0
440	Office Equipment	0	0	0	0	0
450	Vehicular Equipment	0	0	0	0	0
460	Operating Equipment	0	0	0	0	0
Subtotal Capital Outlay		0	0	0	0	0
510	Interfund Transfers	34,950	34,950	14,531	14,531	14,531
520	Debt Service	0	0	0	0	0
530	Other Non-operating Expenses	0	0	0	0	0
540	Inventory Accounts	0	0	0	0	0
550	Projects Closing Entries	0	0	0	0	0
Subtotal Other		34,950	34,950	14,531	14,531	14,531
TOTAL		4,652,907	4,711,190	4,835,409	4,984,785	5,100,906

CITY OF WICHITA 2009/2010 ANNUAL BUDGET

DEPARTMENT	08 POLICE
FUND	100 GENERAL FUND
SERVICE	010401 PERSONS CRIME INVESTIGATION
GOAL	1 SAFE AND SECURE

POSITION TITLE	2007	2008	2009	RANGE	2008 ADOPTED	2008 REVISED	2009 ADOPTED	2010 APPROVED
Police Captain	1	1	1	D61	82,250	87,278	87,278	87,278
Police Lieutenant	5	5	5	727	369,820	374,124	398,786	408,403
Police Sergeant*	0	1	1	725	0	70,833	75,502	77,323
Police Detective **	36	37	37	724	2,122,640	2,154,144	2,269,889	2,300,290
Police Officer	6	6	6	723	301,280	300,904	319,159	325,560
Clerk II	3	3	3	615	91,310	93,119	97,571	98,295
Subtotal	51	53	53		2,967,300	3,080,401	3,248,186	3,297,148
Other Regular Salaries					118,620	127,141	129,241	131,937
Total Regular Salaries					3,085,920	3,207,542	3,377,427	3,429,085
Total Special Salaries					24,000	24,000	24,000	24,000
TOTAL AUTHORIZED POSITIONS	51	53	53					

* One Detective position was shifted from Property Crimes and reclassified to a Police Sergeant

** One Detective position was shifted from Special Investigations in the 2008 Revised Budget

CITY OF WICHITA 2009/2010 ANNUAL BUDGET

DEPARTMENT	08 POLICE
FUND	290 FEDERAL FUNDS
SERVICE	0104011 PERSONS CRIME INVESTIGATION
GOAL	1 SAFE AND SECURE

		2007 ACTUAL	2008 ADOPTED	2008 REVISED	2009 ADOPTED	2010 APPROVED
110	Regular Salaries	102,122	149,450	106,573	105,220	101,842
120	Special Salaries	1,790	0	0	0	0
130	Overtime	5,870	0	0	0	0
140	Employee Benefits	23,536	42,630	20,676	30,289	29,072
150	Shrinkage	0	0	0	0	0
Subtotal Salaries and Benefits		133,318	192,080	127,249	135,509	130,914
210	Utilities	0	0	0	0	0
220	Communications	2,388	2,220	1,174	1,174	1,174
230	Transportation and Training	3,132	530	3,200	3,200	3,200
240	Insurance	0	0	0	0	0
250	Professional Services	0	0	0	0	0
260	Data Processing	4,962	5,230	2,616	2,616	2,616
270	Equipment Charges	0	0	0	0	0
280	Buildings and Grounds Charges	0	0	0	0	0
290	Other Contractuals	4,275	8,000	1,700	1,700	1,700
Subtotal Contractuals		14,757	15,980	8,690	8,690	8,690
310	Office Supplies	258	500	1,250	1,250	1,250
320	Clothing and Towels	0	0	0	0	0
330	Chemicals	0	0	0	0	0
340	Equipment Parts and Supplies	0	0	0	0	0
350	Materials	0	0	0	0	0
370	Building Parts and Materials	0	0	0	0	0
380	Non-capitalizable Equipment	0	0	0	0	0
390	Other Commodities	806	3,000	5,000	5,000	5,000
Subtotal Commodities		1,063	3,500	6,250	6,250	6,250
410	Land	0	0	0	0	0
420	Buildings	0	0	0	0	0
430	Improvements Other Than Bldgs.	0	0	0	0	0
440	Office Equipment	0	0	0	0	0
450	Vehicular Equipment	0	0	0	0	0
460	Operating Equipment	0	0	0	0	0
Subtotal Capital Outlay		0	0	0	0	0
510	Interfund Transfers	0	0	0	0	0
520	Debt Service	0	0	0	0	0
530	Other Non-operating Expenses	0	0	0	0	0
540	Inventory Accounts	0	0	0	0	0
550	Projects Closing Entries	0	0	0	0	0
Subtotal Other		0	0	0	0	0
TOTAL		149,138	211,560	142,189	150,449	145,854

CITY OF WICHITA 2009/2010 ANNUAL BUDGET

DEPARTMENT	08 POLICE
FUND	290 FEDERAL FUNDS
SERVICE	010401 PERSONS CRIME INVESTIGATION
GOAL	1 SAFE AND SECURE

POSITION TITLE	2007	2008	2009	RANGE	2008 ADOPTED	2008 REVISED	2009 ADOPTED	2010 APPROVED
Program Specialist - VOCA	1	1	1	C41	47,420	50,207	50,207	50,207
Police Detective - ICAC Program	1	1	1	724	62,990	62,018	64,499	64,499
Police Detective - Safe Streets	1	1	1	724	62,990	62,018	64,499	64,499
Administrative Aide I - VOCA*	1	0	0	620	37,900	0	0	0
Subtotal	4	3	3		211,300	174,243	179,205	179,205
Other Regular Salaries					2,100	0	0	0
Total Regular Salaries					213,400	174,243	179,205	179,205
TOTAL AUTHORIZED POSITIONS	4	3	3					

* Grant Funded position is eliminated based on decreases in grant funding.

CITY OF WICHITA 2009/2010 ANNUAL BUDGET

DEPARTMENT	08 POLICE
FUND	100 GENERAL FUND
SERVICE	010402 PROPERTY CRIME INVESTIGATION
GOAL	1 SAFE AND SECURE

		2007 ACTUAL	2008 ADOPTED	2008 REVISED	2009 ADOPTED	2010 APPROVED
110	Regular Salaries	2,962,318	3,115,280	3,103,288	3,248,302	3,275,922
120	Special Salaries	15,347	10,360	11,080	11,080	11,080
130	Overtime	62,639	0	0	0	0
140	Employee Benefits	979,150	1,093,820	1,032,387	1,073,324	1,120,063
150	Shrinkage	0	0	0	-83,125	-81,816
Subtotal Salaries and Benefits		4,019,454	4,219,460	4,146,755	4,249,581	4,325,249
210	Utilities	585	0	0	0	0
220	Communications	24,132	22,820	24,880	24,880	24,880
230	Transportation and Training	0	0	0	0	0
240	Insurance	14,720	14,720	15,410	15,410	15,410
250	Professional Services	55	0	0	0	0
260	Data Processing	132,354	124,830	124,830	130,079	130,079
270	Equipment Charges	81,055	124,930	124,930	124,930	124,930
280	Buildings and Grounds Charges	0	0	0	0	0
290	Other Contractuals	14,896	15,550	15,550	15,550	15,550
Subtotal Contractuals		267,797	302,850	305,600	310,849	310,849
310	Office Supplies	3,181	3,000	3,200	3,200	3,200
320	Clothing and Towels	0	0	0	0	0
330	Chemicals	0	0	0	0	0
340	Equipment Parts and Supplies	59	0	0	0	0
350	Materials	19	0	0	0	0
370	Building Parts and Materials	0	0	0	0	0
380	Non-capitalizable Equipment	210	1,220	1,220	1,220	1,220
390	Other Commodities	667	1,510	600	600	600
Subtotal Commodities		4,136	5,730	5,020	5,020	5,020
410	Land	0	0	0	0	0
420	Buildings	0	0	0	0	0
430	Improvements Other Than Bldgs.	0	0	0	0	0
440	Office Equipment	0	0	0	0	0
450	Vehicular Equipment	0	0	0	0	0
460	Operating Equipment	0	0	0	0	0
Subtotal Capital Outlay		0	0	0	0	0
510	Interfund Transfers	0	0	0	0	0
520	Debt Service	0	0	0	0	0
530	Other Non-operating Expenses	0	0	0	0	0
540	Inventory Accounts	0	0	0	0	0
550	Projects Closing Entries	0	0	0	0	0
Subtotal Other		0	0	0	0	0
TOTAL		4,291,386	4,528,040	4,457,375	4,565,450	4,641,118

CITY OF WICHITA 2009/2010 ANNUAL BUDGET

DEPARTMENT	08 POLICE
FUND	100 GENERAL FUND
SERVICE	010402 PROPERTY CRIME INVESTIGATION
GOAL	1 SAFE AND SECURE

POSITION TITLE	2007	2008	2009	RANGE	2008 ADOPTED	2008 REVISED	2009 ADOPTED	2010 APPROVED
Police Captain	1	1	1	D61	80,680	85,608	85,608	85,608
Police Lieutenant	5	5	5	727	369,820	373,980	398,786	408,402
Police Detective*	37	36	36	724	2,255,500	2,196,383	2,295,935	2,307,979
Police Officer	4	4	4	723	185,980	228,188	239,947	242,693
Service Officer II	1	1	1	623	45,970	46,870	48,744	48,744
Clerk II	3	3	3	615	89,180	85,786	90,553	91,968
Subtotal	51	50	50		3,027,130	3,016,815	3,159,573	3,185,395
Other Regular Salaries					88,150	86,473	88,729	90,527
Total Regular Salaries					3,115,280	3,103,288	3,248,302	3,275,922
Total Special Salaries					10,360	11,080	11,080	11,080
TOTAL AUTHORIZED POSITIONS	51	50	50					

* One Detective position shifted to Persons Crime and reclassified to a Police Sergeant

CITY OF WICHITA 2009/2010 ANNUAL BUDGET

DEPARTMENT	08 POLICE
FUND	100 GENERAL FUND
SERVICE	010403 SPECIAL INVESTIGATIONS
GOAL	1 SAFE AND SECURE

		2007 ACTUAL	2008 ADOPTED	2008 REVISED	2009 ADOPTED	2010 APPROVED
110	Regular Salaries	1,687,296	1,774,590	1,743,274	1,825,371	1,842,545
120	Special Salaries	9,713	10,000	10,000	10,000	10,000
130	Overtime	34,122	37,050	37,050	37,050	37,050
140	Employee Benefits	552,573	612,000	569,292	592,529	619,076
150	Shrinkage	0	0	0	-46,354	-45,570
Subtotal Salaries and Benefits		2,283,704	2,433,640	2,359,616	2,418,596	2,463,101
210	Utilities	2,956	0	4,350	4,350	4,350
220	Communications	18,591	22,300	20,120	19,720	20,520
230	Transportation and Training	823	1,900	1,900	1,900	1,900
240	Insurance	0	0	0	0	0
250	Professional Services	12,815	13,640	13,640	13,640	13,640
260	Data Processing	62,168	67,880	67,880	65,203	65,203
270	Equipment Charges	454	500	500	500	500
280	Buildings and Grounds Charges	50	0	0	0	0
290	Other Contractuals	9,716	10,380	10,410	10,410	10,410
Subtotal Contractuals		107,572	116,600	118,800	115,723	116,523
310	Office Supplies	2,210	2,600	2,600	2,600	2,600
320	Clothing and Towels	0	0	0	0	0
330	Chemicals	495	900	1,800	1,800	1,800
340	Equipment Parts and Supplies	45	0	0	0	0
350	Materials	0	0	0	0	0
370	Building Parts and Materials	0	0	0	0	0
380	Non-capitalizable Equipment	3,521	2,900	3,100	3,100	3,100
390	Other Commodities	861	1,600	1,000	1,000	1,000
Subtotal Commodities		7,131	8,000	8,500	8,500	8,500
410	Land	0	0	0	0	0
420	Buildings	0	0	0	0	0
430	Improvements Other Than Bldgs.	0	0	0	0	0
440	Office Equipment	0	0	0	0	0
450	Vehicular Equipment	0	0	0	0	0
460	Operating Equipment	0	0	0	0	0
Subtotal Capital Outlay		0	0	0	0	0
510	Interfund Transfers	0	0	0	0	0
520	Debt Service	0	0	0	0	0
530	Other Non-operating Expenses	0	0	0	0	0
540	Inventory Accounts	0	0	0	0	0
550	Projects Closing Entries	0	0	0	0	0
Subtotal Other		0	0	0	0	0
TOTAL		2,398,407	2,558,240	2,486,916	2,542,819	2,588,124

CITY OF WICHITA 2009/2010 ANNUAL BUDGET

DEPARTMENT	08	POLICE
FUND	100	GENERAL FUND
SERVICE	010403	SPECIAL INVESTIGATIONS
GOAL	1	SAFE AND SECURE

POSITION TITLE	2007	2008	2009	RANGE	2008 ADOPTED	2008 REVISED	2009 ADOPTED	2010 APPROVED
Police Captain	1	1	1	D61	74,530	79,085	79,085	79,085
Police Lieutenant	2	2	2	727	147,930	149,649	159,515	163,361
Police Sergeant	1	1	1	725	70,730	70,833	75,502	77,323
Police Detective*	22	21	21	724	1,317,940	1,266,783	1,327,679	1,338,028
Secretary	1	1	1	619	31,350	31,994	34,102	34,925
Clerk II	2	2	2	615	63,760	65,009	67,610	67,610
Subtotal	29	28	28		1,706,240	1,663,354	1,743,492	1,760,332
Other Regular Salaries					68,350	79,920	81,879	82,213
Total Regular Salaries					1,774,590	1,743,274	1,825,371	1,842,545
Total Special Salaries					10,000	10,000	10,000	10,000
TOTAL AUTHORIZED POSITIONS	29	28	28					

* Shifted one Detective to Persons Crimes.

CITY OF WICHITA 2009/2010 ANNUAL BUDGET

DEPARTMENT	08 POLICE
FUND	100 GENERAL FUND
SERVICE	010404 TECHNICAL SERVICES
GOAL	1 SAFE AND SECURE

		2007 ACTUAL	2008 ADOPTED	2008 REVISED	2009 ADOPTED	2010 APPROVED
110	Regular Salaries	1,152,788	1,224,470	1,179,439	1,228,221	1,242,844
120	Special Salaries	3,166	0	0	0	0
130	Overtime	28,733	24,500	24,500	24,500	24,500
140	Employee Benefits	316,507	345,560	327,342	352,707	371,640
150	Shrinkage	0	0	0	-33,766	-33,184
Subtotal Salaries and Benefits		1,501,194	1,594,530	1,531,281	1,571,662	1,605,800
210	Utilities	25,557	36,820	29,200	29,200	29,200
220	Communications	23,490	26,120	24,240	24,240	24,240
230	Transportation and Training	11,250	2,400	2,400	2,400	1,900
240	Insurance	15,230	15,230	15,440	15,440	15,440
250	Professional Services	6,252	26,160	5,540	5,540	5,540
260	Data Processing	46,623	44,490	44,490	46,726	46,726
270	Equipment Charges	30,760	46,500	105,700	105,700	105,700
280	Buildings and Grounds Charges	1,343	1,320	1,320	1,320	1,320
290	Other Contractuals	8,491	8,490	8,520	8,520	8,520
Subtotal Contractuals		168,995	207,530	236,850	239,086	238,586
310	Office Supplies	5,965	6,000	6,000	6,000	6,000
320	Clothing and Towels	0	0	0	0	0
330	Chemicals	0	0	0	0	0
340	Equipment Parts and Supplies	153	0	0	0	0
350	Materials	0	0	0	0	0
370	Building Parts and Materials	81	0	0	0	0
380	Non-capitalizable Equipment	34,490	34,000	34,000	34,000	34,000
390	Other Commodities	1,430	900	900	900	900
Subtotal Commodities		42,119	40,900	40,900	40,900	40,900
410	Land	0	0	0	0	0
420	Buildings	0	0	0	0	0
430	Improvements Other Than Bldgs.	0	0	0	0	0
440	Office Equipment	0	0	25,000	0	0
450	Vehicular Equipment	0	0	0	0	0
460	Operating Equipment	0	0	0	0	0
Subtotal Capital Outlay		0	0	25,000	0	0
510	Interfund Transfers	0	0	0	0	0
520	Debt Service	0	0	0	0	0
530	Other Non-operating Expenses	0	0	0	0	0
540	Inventory Accounts	0	0	0	0	0
550	Projects Closing Entries	0	0	0	0	0
Subtotal Other		0	0	0	0	0
TOTAL		1,712,308	1,842,960	1,834,031	1,851,648	1,885,286

CITY OF WICHITA 2009/2010 ANNUAL BUDGET

DEPARTMENT	08 POLICE
FUND	100 GENERAL FUND
SERVICE	010404 TECHNICAL SERVICES
GOAL	1 SAFE AND SECURE

POSITION TITLE	2007	2008	2009	RANGE	2008 ADOPTED	2008 REVISED	2009 ADOPTED	2010 APPROVED
Police Captain*	0	1	1	D61	0	72,800	72,800	72,800
Public Safety Administrator*	1	0	0	C44	59,470	0	0	0
Section Supervisor	1	1	1	C41	53,280	56,359	56,359	56,359
Forensic Examiner**	2	1	1	929	121,750	61,322	61,322	61,322
Police Detective**	0	1	1	724	0	62,018	64,499	64,499
Crime Scene Investigator	11	11	11	714	501,120	498,180	525,566	533,254
Crime Scene Supervisor*	3	2	2	626	150,960	98,784	98,784	98,784
Property Clerk	1	1	1	621	41,720	43,665	46,505	47,666
Service Officer I	4	4	4	620	149,420	141,593	149,834	152,467
Photographer	1	1	1	619	38,310	38,869	40,424	40,424
Photo Technician	1	1	1	617	26,100	26,647	28,395	29,088
Clerk II	2	2	2	615	53,620	52,553	56,017	57,368
Subtotal	27	26	26		1,195,750	1,152,791	1,200,506	1,214,032
Other Regular Salaries					28,720	26,648	27,715	28,812
Total Regular Salaries					1,224,470	1,179,439	1,228,221	1,242,844
TOTAL AUTHORIZED POSITIONS	27	26	26					

* One Police Captain position is added, concurrent with the deletion of a Crime Scene Supervisor position, and one Public Safety Administrator position

** One Forensic Examiner position is reclassified to a Police Detective position

CITY OF WICHITA 2009/2010 ANNUAL BUDGET

DEPARTMENT	08 POLICE
FUND	100 GENERAL FUND
SERVICE	010501 POLICE SUPPORT SERVICES
GOAL	1 SAFE AND SECURE

		2007 ACTUAL	2008 ADOPTED	2008 REVISED	2009 ADOPTED	2010 APPROVED
110	Regular Salaries	1,028,937	1,081,780	1,086,854	1,130,737	1,141,405
120	Special Salaries	1,499	2,000	2,000	2,000	2,000
130	Overtime	5,438	0	0	0	0
140	Employee Benefits	338,270	361,080	355,758	376,174	395,142
150	Shrinkage	0	0	0	-36,780	-36,258
Subtotal Salaries and Benefits		1,374,144	1,444,860	1,444,612	1,472,131	1,502,289
210	Utilities	0	0	0	0	0
220	Communications	9,367	11,520	10,920	10,920	10,920
230	Transportation and Training	4,792	6,900	6,900	6,900	6,900
240	Insurance	6,400	6,400	6,700	6,700	6,700
250	Professional Services	377,853	270,660	271,060	271,060	271,060
260	Data Processing	68,695	70,400	70,400	73,130	73,130
270	Equipment Charges	42,623	48,780	45,100	45,100	45,100
280	Buildings and Grounds Charges	0	0	0	0	0
290	Other Contractuals	13,629	16,100	15,100	15,100	15,100
Subtotal Contractuals		523,359	430,760	426,180	428,910	428,910
310	Office Supplies	8,333	8,700	9,200	9,200	9,200
320	Clothing and Towels	0	0	0	0	0
330	Chemicals	0	0	0	0	0
340	Equipment Parts and Supplies	0	0	0	0	0
350	Materials	0	0	0	0	0
370	Building Parts and Materials	48	0	0	0	0
380	Non-capitalizable Equipment	1,670	2,580	1,880	1,880	1,880
390	Other Commodities	11,509	11,400	11,200	11,200	11,200
Subtotal Commodities		21,560	22,680	22,280	22,280	22,280
410	Land	0	0	0	0	0
420	Buildings	0	0	0	0	0
430	Improvements Other Than Bldgs.	0	0	0	0	0
440	Office Equipment	0	0	0	0	0
450	Vehicular Equipment	0	0	0	0	0
460	Operating Equipment	0	0	0	0	0
Subtotal Capital Outlay		0	0	0	0	0
510	Interfund Transfers	0	0	0	0	0
520	Debt Service	0	0	0	0	0
530	Other Non-operating Expenses	0	0	100,000	100,000	100,000
540	Inventory Accounts	0	0	0	0	0
550	Projects Closing Entries	0	0	0	0	0
Subtotal Other		0	0	100,000	100,000	100,000
TOTAL		1,919,063	1,898,300	1,993,072	2,023,321	2,053,479

CITY OF WICHITA 2009/2010 ANNUAL BUDGET

DEPARTMENT	08 POLICE
FUND	100 GENERAL FUND
SERVICE	010501 POLICE SUPPORT SERVICES
GOAL	1 SAFE AND SECURE

POSITION TITLE	2007	2008	2009	RANGE	2008 ADOPTED	2008 REVISED	2009 ADOPTED	2010 APPROVED
Police Captain	1	1	1	D61	76,890	81,583	81,583	81,583
Section Supervisor	1	1	1	C41	45,670	43,996	43,996	43,996
Fiscal Analyst	1	1	1	C41	51,200	53,797	53,797	53,797
Planning Analyst	1	1	1	927	53,180	54,264	54,264	54,264
Administrative Aide III	1	1	1	926	53,210	54,254	56,425	56,425
Police Lieutenant	1	1	1	727	73,960	74,825	79,757	81,681
Police Officer	8	8	8	723	417,540	410,588	431,766	436,551
Administrative Aide II	1	1	1	623	45,970	46,870	48,744	48,744
Associate Accountant	1	1	1	623	45,970	46,870	48,744	48,744
Account Clerk III	2	2	2	621	82,120	83,772	88,170	89,246
Administrative Aide I	3	3	3	620	115,790	112,162	118,453	120,340
Subtotal	21	21	21		1,061,500	1,062,982	1,105,700	1,115,372
Other Regular Salaries					20,280	23,872	25,037	26,033
Total Regular Salaries					1,081,780	1,086,854	1,130,737	1,141,405
Total Special Salaries					2,000	2,000	2,000	2,000
TOTAL AUTHORIZED POSITIONS	21	21	21					

CITY OF WICHITA 2009/2010 ANNUAL BUDGET

DEPARTMENT	08 POLICE
FUND	100 GENERAL FUND
SERVICE	010502 POLICE TRAINING
GOAL	1 SAFE AND SECURE

		2007 ACTUAL	2008 ADOPTED	2008 REVISED	2009 ADOPTED	2010 APPROVED
110	Regular Salaries	876,596	920,690	941,392	989,935	1,005,533
120	Special Salaries	3,380	2,000	2,720	2,720	2,720
130	Overtime	5,116	0	0	0	0
140	Employee Benefits	272,401	303,300	303,179	319,824	335,952
150	Shrinkage	0	0	0	-37,071	-37,639
Subtotal Salaries and Benefits		1,157,493	1,225,990	1,247,291	1,275,408	1,306,566
210	Utilities	37,068	47,770	49,700	49,700	49,700
220	Communications	2,506	3,200	3,000	3,000	3,000
230	Transportation and Training	6,955	1,100	4,500	6,400	6,800
240	Insurance	4,060	4,060	4,180	4,180	4,306
250	Professional Services	9,940	13,600	13,700	13,700	13,700
260	Data Processing	34,320	32,690	32,690	39,279	39,279
270	Equipment Charges	21,315	19,910	21,010	21,010	21,010
280	Buildings and Grounds Charges	26,358	16,450	21,450	21,450	21,450
290	Other Contractuals	14,939	21,120	21,620	16,620	16,620
Subtotal Contractuals		157,462	159,900	171,850	175,339	175,865
310	Office Supplies	2,719	6,000	4,000	4,000	4,000
320	Clothing and Towels	419,784	425,000	460,000	490,000	490,000
330	Chemicals	0	0	0	0	0
340	Equipment Parts and Supplies	3,789	2,900	3,600	3,600	3,600
350	Materials	19	0	0	0	0
370	Building Parts and Materials	0	0	0	0	0
380	Non-capitalizable Equipment	105,879	97,210	103,750	111,750	111,750
390	Other Commodities	8,533	9,100	13,100	9,100	9,100
Subtotal Commodities		540,724	540,210	584,450	618,450	618,450
410	Land	0	0	0	0	0
420	Buildings	0	0	0	0	0
430	Improvements Other Than Bldgs.	0	0	0	0	0
440	Office Equipment	0	0	0	0	0
450	Vehicular Equipment	0	0	0	0	0
460	Operating Equipment	0	0	0	0	0
Subtotal Capital Outlay		0	0	0	0	0
510	Interfund Transfers	0	0	0	0	0
520	Debt Service	0	0	0	0	0
530	Other Non-operating Expenses	0	0	0	0	0
540	Inventory Accounts	0	0	0	0	0
550	Projects Closing Entries	0	0	0	0	0
Subtotal Other		0	0	0	0	0
TOTAL		1,855,679	1,926,100	2,003,591	2,069,197	2,100,881

CITY OF WICHITA 2009/2010 ANNUAL BUDGET

DEPARTMENT	08	POLICE
FUND	100	GENERAL FUND
SERVICE	010502	POLICE TRAINING
GOAL	1	SAFE AND SECURE

POSITION TITLE	2007	2008	2009	RANGE	2008 ADOPTED	2008 REVISED	2009 ADOPTED	2010 APPROVED
Police Captain	1	1	1	D61	82,980	88,046	88,046	88,046
Police Lieutenant	5	5	5	727	359,700	363,820	387,804	397,155
Police Sergeant	1	1	1	725	70,730	70,833	75,502	77,323
Police Detective	2	2	2	724	123,500	123,513	130,012	131,628
Service Officer II	2	2	2	623	85,080	86,792	91,282	92,325
Senior Storekeeper	1	1	1	621	41,820	42,640	44,346	44,346
Secretary	1	1	1	619	38,120	38,869	40,424	40,424
Customer Service Clerk I	1	1	1	617	34,810	35,496	36,916	36,916
Maintenance Worker	1	1	1	617	34,810	35,496	36,916	36,916
Clerk II	1	1	1	615	28,100	29,392	31,305	32,086
Subtotal	16	16	16		899,650	914,898	962,552	977,164
Other Regular Salaries					21,040	26,494	27,383	28,169
Total Regular Salaries					920,690	941,392	989,935	1,005,333
Total Special Salaries					2,000	2,720	2,720	2,720
TOTAL AUTHORIZED POSITIONS	16	16	16					

CITY OF WICHITA 2009/2010 ANNUAL BUDGET

DEPARTMENT	08 POLICE
FUND	100 GENERAL FUND
SERVICE	010503 WARRANT OFFICE
GOAL	1 SAFE AND SECURE

		2007 ACTUAL	2008 ADOPTED	2008 REVISED	2009 ADOPTED	2010 APPROVED
110	Regular Salaries	187,447	152,120	154,125	161,638	163,212
120	Special Salaries	41,990	47,670	49,337	50,228	52,604
130	Overtime	1,743	0	0	0	0
140	Employee Benefits	60,378	50,610	69,271	75,163	79,180
150	Shrinkage	0	0	0	-5,741	-5,881
Subtotal Salaries and Benefits		291,559	250,400	272,733	281,288	289,115
210	Utilities	0	0	0	0	0
220	Communications	10,723	7,190	11,110	11,110	11,110
230	Transportation and Training	0	0	0	0	0
240	Insurance	0	0	0	0	0
250	Professional Services	0	0	0	0	0
260	Data Processing	17,468	15,420	15,420	16,506	16,506
270	Equipment Charges	12,240	4,140	4,580	4,580	4,580
280	Buildings and Grounds Charges	0	0	0	0	0
290	Other Contractuals	6,342	3,930	6,240	6,240	6,240
Subtotal Contractuals		46,773	30,680	37,350	38,436	38,436
310	Office Supplies	415	900	700	700	700
320	Clothing and Towels	0	0	0	0	0
330	Chemicals	0	0	0	0	0
340	Equipment Parts and Supplies	0	0	0	0	0
350	Materials	0	0	0	0	0
370	Building Parts and Materials	0	0	0	0	0
380	Non-capitalizable Equipment	0	0	0	0	0
390	Other Commodities	14	0	0	0	0
Subtotal Commodities		429	900	700	700	700
410	Land	0	0	0	0	0
420	Buildings	0	0	0	0	0
430	Improvements Other Than Bldgs.	0	0	0	0	0
440	Office Equipment	0	0	0	0	0
450	Vehicular Equipment	0	0	0	0	0
460	Operating Equipment	0	0	0	0	0
Subtotal Capital Outlay		0	0	0	0	0
510	Interfund Transfers	0	0	0	0	0
520	Debt Service	0	0	0	0	0
530	Other Non-operating Expenses	0	0	0	0	0
540	Inventory Accounts	0	0	0	0	0
550	Projects Closing Entries	0	0	0	0	0
Subtotal Other		0	0	0	0	0
TOTAL		338,760	281,980	310,783	320,424	328,251

CITY OF WICHITA 2009/2010 ANNUAL BUDGET

DEPARTMENT	08 POLICE
FUND	100 GENERAL FUND
SERVICE	010503 WARRANT OFFICE
GOAL	1 SAFE AND SECURE

POSITION TITLE	2007	2008	2009	RANGE	2008 ADOPTED	2008 REVISED	2009 ADOPTED	2010 APPROVED
Warrant Officer	2	2	2	712	95,590	95,548	99,370	99,370
Customer Service Clerk I	2	2	2	617	54,000	55,782	59,424	60,893
Subtotal	4	4	4		136,610	151,329	158,793	160,262
Other Regular Salaries					15,510	2,796	2,845	2,950
Total Regular Salaries					152,120	154,125	161,638	163,212
Clerk II (PT 50%)	4	4	4	615	47,670	49,337	50,228	52,604
Total Special Salaries					47,670	49,337	50,228	52,604
TOTAL AUTHORIZED POSITIONS	8	8	8					

CITY OF WICHITA 2009/2010 ANNUAL BUDGET

DEPARTMENT	08 POLICE
FUND	100 GENERAL FUND
SERVICE	010504 SECURITY SERVICES
GOAL	1 SAFE AND SECURE

		2007 ACTUAL	2008 ADOPTED	2008 REVISED	2009 ADOPTED	2010 APPROVED
110	Regular Salaries	568,342	575,660	649,993	686,788	700,182
120	Special Salaries	-40	0	0	0	0
130	Overtime	6,539	0	0	0	0
140	Employee Benefits	181,818	198,610	214,756	235,305	250,537
150	Shrinkage	0	0	0	-8,576	-8,785
Subtotal Salaries and Benefits		756,659	774,270	864,749	913,517	941,934
210	Utilities	0	0	0	0	0
220	Communications	5	1,900	0	0	0
230	Transportation and Training	0	0	0	0	0
240	Insurance	0	0	0	0	0
250	Professional Services	65	0	0	0	0
260	Data Processing	40,770	48,610	48,610	42,186	42,186
270	Equipment Charges	5,558	6,500	6,500	6,500	6,500
280	Buildings and Grounds Charges	0	0	0	0	0
290	Other Contractuals	569	2,980	2,480	2,480	2,480
Subtotal Contractuals		46,967	59,990	57,590	51,166	51,166
310	Office Supplies	882	1,200	1,200	1,200	1,200
320	Clothing and Towels	5,247	7,430	7,430	7,430	7,430
330	Chemicals	0	0	0	0	0
340	Equipment Parts and Supplies	0	0	0	0	0
350	Materials	0	0	0	0	0
370	Building Parts and Materials	0	0	0	0	0
380	Non-capitalizable Equipment	4,235	1,400	3,400	3,400	3,400
390	Other Commodities	578	0	0	0	0
Subtotal Commodities		10,942	10,030	12,030	12,030	12,030
410	Land	0	0	0	0	0
420	Buildings	0	0	0	0	0
430	Improvements Other Than Bldgs.	0	0	0	0	0
440	Office Equipment	0	0	0	0	0
450	Vehicular Equipment	0	0	0	0	0
460	Operating Equipment	0	0	0	0	0
Subtotal Capital Outlay		0	0	0	0	0
510	Interfund Transfers	0	0	0	0	0
520	Debt Service	0	0	0	0	0
530	Other Non-operating Expenses	0	0	0	0	0
540	Inventory Accounts	0	0	0	0	0
550	Projects Closing Entries	0	0	0	0	0
Subtotal Other		0	0	0	0	0
TOTAL		814,568	844,290	934,369	976,713	1,005,130

CITY OF WICHITA 2009/2010 ANNUAL BUDGET

DEPARTMENT	08 POLICE
FUND	100 GENERAL FUND
SERVICE	010504 SECURITY SERVICES
GOAL	1 SAFE AND SECURE

POSITION TITLE	2007	2008	2009	RANGE	2008 ADOPTED	2008 REVISED	2009 ADOPTED	2010 APPROVED
Security Supervisor	1	1	1	C42	50,970	53,916	53,916	53,916
City Hall Security Officer*	11	12	12	621	376,330	416,317	442,588	452,261
City Hall Security Screener	6	6	6	617	142,960	173,619	184,063	187,696
Subtotal	18	19	19		570,260	643,853	680,568	693,873
Other Regular Salaries					5,400	6,140	6,220	6,310
Total Regular Salaries					575,660	649,993	686,788	700,182
TOTAL AUTHORIZED POSITIONS	18	19	19					

* One new position was added last year in conjunction with expanding security services to the Downtown library.

CITY OF WICHITA 2009/2010 ANNUAL BUDGET

DEPARTMENT	08 POLICE
FUND	100 GENERAL FUND
SERVICE	010505 POLICE RECORDS
GOAL	1 SAFE AND SECURE

		2007 ACTUAL	2008 ADOPTED	2008 REVISED	2009 ADOPTED	2010 APPROVED
110	Regular Salaries	2,300,771	2,442,090	2,516,380	2,628,069	2,661,974
120	Special Salaries	-1	0	0	0	0
130	Overtime	207,622	0	0	0	0
140	Employee Benefits	750,475	813,600	743,481	809,916	855,603
150	Shrinkage	0	0	0	-64,468	-65,868
Subtotal Salaries and Benefits		3,258,867	3,255,690	3,259,861	3,373,517	3,451,709
210	Utilities	0	0	0	0	0
220	Communications	19,473	19,100	19,610	19,610	19,610
230	Transportation and Training	150	2,630	130	130	130
240	Insurance	0	0	0	0	0
250	Professional Services	19,524	1,200	1,200	1,200	1,200
260	Data Processing	96,007	92,130	92,130	97,714	97,714
270	Equipment Charges	973	2,200	2,900	2,900	2,900
280	Buildings and Grounds Charges	46	0	0	0	0
290	Other Contractuals	90,509	77,680	94,190	94,190	94,190
Subtotal Contractuals		226,681	194,940	210,160	215,744	215,744
310	Office Supplies	7,418	7,500	7,500	7,500	7,500
320	Clothing and Towels	0	0	0	0	0
330	Chemicals	0	0	0	0	0
340	Equipment Parts and Supplies	1,154	150	150	150	150
350	Materials	0	0	0	0	0
370	Building Parts and Materials	38	0	0	0	0
380	Non-capitalizable Equipment	890	1,000	1,000	1,000	1,000
390	Other Commodities	319	500	500	500	500
Subtotal Commodities		9,818	9,150	9,150	9,150	9,150
410	Land	0	0	0	0	0
420	Buildings	0	0	0	0	0
430	Improvements Other Than Bldgs.	0	0	0	0	0
440	Office Equipment	0	0	0	0	0
450	Vehicular Equipment	0	0	0	0	0
460	Operating Equipment	0	0	0	0	0
Subtotal Capital Outlay		0	0	0	0	0
510	Interfund Transfers	0	0	0	0	0
520	Debt Service	0	0	0	0	0
530	Other Non-operating Expenses	0	0	0	0	0
540	Inventory Accounts	0	0	0	0	0
550	Projects Closing Entries	0	0	0	0	0
Subtotal Other		0	0	0	0	0
TOTAL		3,495,367	3,459,780	3,479,171	3,598,411	3,676,603

CITY OF WICHITA 2009/2010 ANNUAL BUDGET

DEPARTMENT	08	POLICE
FUND	100	GENERAL FUND
SERVICE	010505	POLICE RECORDS
GOAL	1	SAFE AND SECURE

POSITION TITLE	2007	2008	2009	RANGE	2008 ADOPTED	2008 REVISED	2009 ADOPTED	2010 APPROVED
Public Safety Administrator	1	1	1	C51	59,130	62,126	62,126	62,126
Program Specialist	1	1	1	C41	45,870	52,345	52,345	52,345
Planning Analyst*	1	0	0	927	40,870	0	0	0
SPIDER Dispatcher	10	10	10	621	381,870	398,384	419,053	423,880
Administrative Aide I**	3	4	4	620	121,670	139,834	146,912	148,448
Service Officer I	2	2	2	620	76,160	78,718	82,844	83,831
Customer Service Clerk II ^	0	24	24	619	0	710,471	752,454	766,406
Clerk III** ^	25	0	0	617	713,800	0	0	0
Customer Service Clerk I***	0	25	25	615	0	684,655	724,464	737,318
Clerk II***	23	0	0	615	638,720	0	0	0
Subtotal	72	73	73		2,377,030	2,447,596	2,561,261	2,595,416
Other Regular Salaries					65,060	68,784	66,808	66,558
Total Regular Salaries					2,442,090	2,516,380	2,628,069	2,661,974
TOTAL AUTHORIZED POSITIONS	72	73	73					

- * One Planning Analyst position is eliminated, concurrent with the addition of two Clerk II positions
- ** One Customer Service Clerk II position was reclassified to an Administrative Aide I position
- *** 25 Clerk II were reclassified to Customer Service Clerk I in the 2008 Revised.
- ^ 24 Clerk III were reclassified to Customer Service Clerk II in the 2008 Revised.

CITY OF WICHITA 2009/2010 ANNUAL BUDGET

DEPARTMENT	08 POLICE
FUND	100 GENERAL FUND
SERVICE	010506 SPECIAL OPERATIONS
GOAL	1 SAFE AND SECURE

		2007 ACTUAL	2008 ADOPTED	2008 REVISED	2009 ADOPTED	2010 APPROVED
110	Regular Salaries	634,473	671,130	665,094	696,742	705,734
120	Special Salaries	3,621	3,800	3,800	3,800	3,800
130	Overtime	42,491	0	0	0	0
140	Employee Benefits	220,702	242,820	239,285	251,001	391,511
150	Shrinkage	0	0	0	-32,143	-37,821
Subtotal Salaries and Benefits		901,287	917,750	908,179	919,400	1,063,224
210	Utilities	6,493	6,620	7,200	7,200	7,200
220	Communications	14,134	13,020	15,360	15,360	15,360
230	Transportation and Training	1,067	1,100	1,100	1,100	1,100
240	Insurance	4,290	4,290	4,470	4,470	4,470
250	Professional Services	32,020	34,340	26,000	30,000	30,000
260	Data Processing	31,145	31,040	31,040	32,420	32,420
270	Equipment Charges	31,779	59,090	29,450	29,450	29,450
280	Buildings and Grounds Charges	1,047	3,620	1,120	1,120	1,120
290	Other Contractuals	10,281	8,710	9,150	9,150	9,150
Subtotal Contractuals		132,256	161,830	124,890	130,270	130,270
310	Office Supplies	911	1,400	1,200	1,200	1,200
320	Clothing and Towels	0	0	0	0	0
330	Chemicals	0	0	0	0	0
340	Equipment Parts and Supplies	7,280	7,050	8,000	8,000	8,000
350	Materials	40	2,000	1,000	1,000	1,000
370	Building Parts and Materials	2,623	0	0	0	0
380	Non-capitalizable Equipment	8,531	8,000	7,300	7,300	7,300
390	Other Commodities	3,901	7,150	4,200	4,200	4,200
Subtotal Commodities		23,285	25,600	21,700	21,700	21,700
410	Land	0	0	0	0	0
420	Buildings	0	0	0	0	0
430	Improvements Other Than Bldgs.	0	0	0	0	0
440	Office Equipment	0	0	0	0	0
450	Vehicular Equipment	0	0	0	0	0
460	Operating Equipment	0	0	0	0	0
Subtotal Capital Outlay		0	0	0	0	0
510	Interfund Transfers	0	0	0	0	0
520	Debt Service	0	0	0	0	0
530	Other Non-operating Expenses	0	0	0	0	0
540	Inventory Accounts	0	0	0	0	0
550	Projects Closing Entries	0	0	0	0	0
Subtotal Other		0	0	0	0	0
TOTAL		1,056,828	1,105,180	1,054,769	1,071,370	1,215,194

CITY OF WICHITA 2009/2010 ANNUAL BUDGET

DEPARTMENT	08 POLICE
FUND	100 GENERAL FUND
SERVICE	010506 SPECIAL OPERATIONS
GOAL	1 SAFE AND SECURE

POSITION TITLE	2007	2008	2009	RANGE	2008 ADOPTED	2008 REVISED	2009 ADOPTED	2010 APPROVED
Police Captain	1	1	1	D61	76,580	81,263	81,263	81,263
Police Lieutenant	2	2	2	727	147,930	149,650	159,514	163,362
Police Detective	4	4	4	724	248,190	233,911	246,116	248,940
Police Officer	1	1	1	723	56,450	56,451	58,709	58,709
Traffic Safety Officer*	1	0	0	711	44,900	0	0	0
Service Officer II*	1	2	2	623	45,970	92,684	97,579	98,757
Clerk III	1	1	1	617	32,510	33,183	35,364	36,223
Subtotal	11	11	11		652,530	647,142	678,545	687,253
Other Regular Salaries					18,600	16,752	16,997	17,281
Total Regular Salaries					671,130	665,094	696,742	705,734
Total Special Salaries					3,800	3,800	3,800	3,800
TOTAL AUTHORIZED POSITIONS	11	11	11					

* One Traffic Safety Officer position was reclassified to a Service Officer II position

CITY OF WICHITA 2009/2010 ANNUAL BUDGET

DEPARTMENT	08 POLICE
FUND	100 GENERAL FUND
SERVICE	010508 POLICE PROFESSIONAL STANDARDS
GOAL	1 SAFE AND SECURE

		2007 ACTUAL	2008 ADOPTED	2008 REVISED	2009 ADOPTED	2010 APPROVED
110	Regular Salaries	311,853	316,710	325,552	341,455	348,154
120	Special Salaries	1,598	2,000	2,000	2,000	2,000
130	Overtime	4,398	0	0	0	0
140	Employee Benefits	109,512	114,320	102,842	106,867	112,076
150	Shrinkage	0	0	0	-9,006	-9,245
Subtotal Salaries and Benefits		427,362	433,030	430,394	441,316	452,985
210	Utilities	0	0	0	0	0
220	Communications	2,353	2,040	2,790	2,790	2,790
230	Transportation and Training	1,254	1,250	1,250	1,250	1,250
240	Insurance	1,280	1,280	1,340	1,340	1,340
250	Professional Services	0	0	0	0	0
260	Data Processing	15,213	16,220	16,220	16,845	16,845
270	Equipment Charges	10,894	11,120	11,800	11,800	11,800
280	Buildings and Grounds Charges	0	0	0	0	0
290	Other Contractuals	1,483	1,500	1,500	1,500	1,500
Subtotal Contractuals		32,477	33,410	34,900	35,525	35,525
310	Office Supplies	1,056	850	850	850	850
320	Clothing and Towels	0	0	0	0	0
330	Chemicals	0	0	0	0	0
340	Equipment Parts and Supplies	0	0	0	0	0
350	Materials	0	0	0	0	0
370	Building Parts and Materials	0	0	0	0	0
380	Non-capitalizable Equipment	54	450	450	450	450
390	Other Commodities	29	50	100	100	100
Subtotal Commodities		1,139	1,350	1,400	1,400	1,400
410	Land	0	0	0	0	0
420	Buildings	0	0	0	0	0
430	Improvements Other Than Bldgs.	0	0	0	0	0
440	Office Equipment	0	0	0	0	0
450	Vehicular Equipment	0	0	0	0	0
460	Operating Equipment	0	0	0	0	0
Subtotal Capital Outlay		0	0	0	0	0
510	Interfund Transfers	0	0	0	0	0
520	Debt Service	0	0	0	0	0
530	Other Non-operating Expenses	0	0	0	0	0
540	Inventory Accounts	0	0	0	0	0
550	Projects Closing Entries	0	0	0	0	0
Subtotal Other		0	0	0	0	0
TOTAL		460,977	467,790	466,694	478,241	489,910

CITY OF WICHITA 2009/2010 ANNUAL BUDGET

DEPARTMENT	08 POLICE
FUND	100 GENERAL FUND
SERVICE	010508 POLICE PROFESSIONAL STANDARDS
GOAL	1 SAFE AND SECURE

POSITION TITLE	2007	2008	2009	RANGE	2008 ADOPTED	2008 REVISED	2009 ADOPTED	2010 APPROVED
Police Captain	1	1	1	D61	76,950	81,656	81,656	81,656
Police Lieutenant	1	1	1	727	73,960	74,825	79,757	81,681
Police Sergeant	1	1	1	725	70,730	70,833	75,502	77,323
Police Detective	1	1	1	724	62,050	60,222	64,148	65,740
Clerk II	1	1	1	615	25,700	27,268	29,044	29,767
Subtotal	5	5	5		309,390	314,804	330,107	336,167
Other Regular Salaries					7,320	10,748	11,348	11,987
Total Regular Salaries					316,710	325,552	341,455	348,154
Total Special Salaries					2,000	2,000	2,000	2,000
TOTAL AUTHORIZED POSITIONS	5	5	5					

CITY OF WICHITA 2009/2010 ANNUAL BUDGET

DEPARTMENT	08 POLICE
FUND	100 GENERAL FUND
SERVICE	011002 POLICE ADMINISTRATION
GOAL	1 SAFE AND SECURE

		2007 ACTUAL	2008 ADOPTED	2008 REVISED	2009 ADOPTED	2010 APPROVED
110	Regular Salaries	619,161	623,340	649,358	657,288	659,316
120	Special Salaries	1,800	2,040	2,760	2,760	2,760
130	Overtime	1,859	0	0	0	0
140	Employee Benefits	174,143	188,260	195,653	199,564	205,539
150	Shrinkage	0	0	0	-33,103	-33,359
Subtotal Salaries and Benefits		796,963	813,640	847,771	826,509	834,256
210	Utilities	0	0	0	0	0
220	Communications	7,217	7,400	7,150	7,150	7,150
230	Transportation and Training	38,012	38,560	38,560	38,560	38,560
240	Insurance	2,560	2,560	2,680	2,680	2,680
250	Professional Services	32,438	53,980	53,980	53,980	53,980
260	Data Processing	30,954	36,140	36,140	47,565	47,565
270	Equipment Charges	38,847	26,330	50,680	51,470	51,470
280	Buildings and Grounds Charges	390	0	0	0	0
290	Other Contractuals	8,812	33,030	31,830	31,830	31,830
Subtotal Contractuals		159,230	198,000	221,020	233,235	233,235
310	Office Supplies	3,805	3,880	4,520	4,520	4,520
320	Clothing and Towels	0	0	0	0	0
330	Chemicals	0	0	0	0	0
340	Equipment Parts and Supplies	4,023	48,000	10,000	10,000	10,000
350	Materials	58	0	0	0	0
370	Building Parts and Materials	0	0	0	0	0
380	Non-capitalizable Equipment	134	0	0	0	0
390	Other Commodities	6,067	300	300	300	300
Subtotal Commodities		14,087	52,180	14,820	14,820	14,820
410	Land	0	0	0	0	0
420	Buildings	0	0	0	0	0
430	Improvements Other Than Bldgs.	0	0	0	0	0
440	Office Equipment	0	0	0	0	0
450	Vehicular Equipment	0	0	0	0	0
460	Operating Equipment	0	0	0	0	0
Subtotal Capital Outlay		0	0	0	0	0
510	Interfund Transfers	0	0	0	0	0
520	Debt Service	0	0	0	0	0
530	Other Non-operating Expenses	0	0	0	0	0
540	Inventory Accounts	0	0	0	0	0
550	Projects Closing Entries	0	0	0	0	0
Subtotal Other		0	0	0	0	0
TOTAL		970,279	1,063,820	1,083,611	1,074,564	1,082,311

CITY OF WICHITA 2009/2010 ANNUAL BUDGET

DEPARTMENT	08 POLICE
FUND	100 GENERAL FUND
SERVICE	011002 POLICE ADMINISTRATION
GOAL	1 SAFE AND SECURE

POSITION TITLE	2007	2008	2009	RANGE	2008 ADOPTED	2008 REVISED	2009 ADOPTED	2010 APPROVED
Department Director	1	1	1	E83	129,220	140,521	140,521	140,521
Deputy Police Chief	3	3	3	D71	278,760	295,799	295,799	295,799
Communications Specialist	1	1	1	C41	53,440	56,422	56,422	56,422
Administrative Secretary	1	1	1	621	41,820	42,640	44,346	44,346
Secretary	3	3	3	619	108,280	102,848	108,935	110,265
Subtotal	9	9	9		611,520	638,230	646,023	647,353
Other Regular Salaries					11,820	11,128	11,265	11,963
Total Regular Salaries					623,340	649,358	657,288	659,316
Total Special Salaries					2,040	2,760	2,760	2,760
TOTAL AUTHORIZED POSITIONS	9	9	9					