

METRO



planning NEWS



CITY OF
WICHITA



Vol. 3, Issue 4
Winter, 2006

Inside this issue:

The Unveiling of "Nomar International" 1

K-96 Corridor Economic Development Plan Adopted 1

Arena Neighborhood Redevelopment Plan Update 2

PROS Plan 2

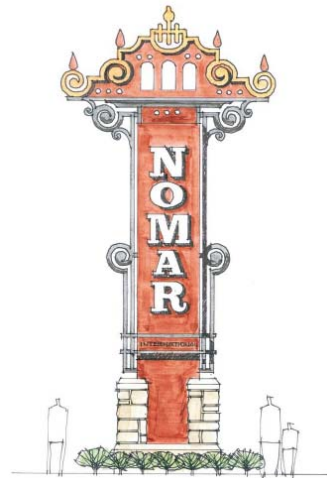
WAMPO Staff Attends AMPO National Conference 3

WAMPO Awarded Safe Routes Funding 3

Flood Insurance Rate Map Update and Open House 3

Welcome, New Planners!..... 4

Derby's New Assistant City Manager . 4



The Unveiling of "Nomar International"

By Dave Barber AICP

On October 24, 2006, the Greteman Group made a presentation to the 21st Street Business Association regarding design and architectural recommendations for the International Marketplace District, including the recommended district name of "Nomar International." "Nomar" has long been the abbreviation for this North Market area of Wichita, with the Nomar Theater being the undisputed icon and landmark. The name "Nomar" is simple, memorable and offers tremendous branding opportunities for businesses in the area.

In addition to the name, the consultant team unveiled design concepts, overall branding, signage, a color palette and architectural recommendations for key areas, including the corner of 21st Street and Broadway, a market plaza with a bandstand, landscaping, streetscaping, a gateway tower and gateway arches. All were met with positive reviews from meeting attendees. A marketing plan is currently under development with a final presentation to Wichita City Council planned sometime in January 2007.

The overall goal of this planning initiative is to help create a district that will eventually become the premier destination for ethnic and international retail business, services and cultural entertainment / artistic events in the Wichita region.

Graphic images from the October 24th presentation can be viewed by going to www.wichita.gov/cityoffices/planning/. For more information on this initiative, contact Dave Barber at 268-4421.

K-96 Corridor Economic Development Plan Adopted

By Scott Knebel

The counties of Reno and Sedgwick and the communities of Maize, Mt. Hope, Haven, and South Hutchinson have come together to plan for the future of the K-96 Corridor. The Corridor currently serves as the primary transportation route between Wichita, on the southeast, and Hutchinson on the north. K-96 represents one of the most heavily traveled State highways within Kansas, allowing people to easily commute between two prominent Kansas cities.

The K-96 Corridor Economic Development Plan was adopted as an amendment of the Wichita-Sedgwick County Comprehensive Plan by the Sedgwick County Board of Commissioners on November 15, 2006, and by the Wichita City Council on November 21, 2006. The Plan was adopted with modifications that were recommended by the Wichita-Sedgwick County Metropolitan Area Planning Commission to be more consistent with the Comprehensive Plan by adopting general policy positions as opposed to adopting regulations that would require compliance with the Plan's policy direction. The Plan is available at <http://www.wichita.gov/CityOffices/Planning/AP/Comprehensive/k-96econdevplan.htm>




Wichita-Sedgwick County
Metropolitan Area Planning
Department (MAPD)
268-4421

Wichita Area
Metropolitan
Planning Organization
(WAMPO)
268-4391

Arena Neighborhood Redevelopment Plan Update

By Scott Knebel

On November 15, 2006, Gould Evans Associates presented the first draft of the Arena Neighborhood Redevelopment Plan for public comment. Over 50 citizens attended the public open house and provided their feedback on the Plan. The Plan recommends long-term redevelopment initiatives for the area of downtown Wichita that surrounds the Sedgwick County Arena—scheduled to open in 2009. Redevelopment of the area is proposed to occur in four different districts.

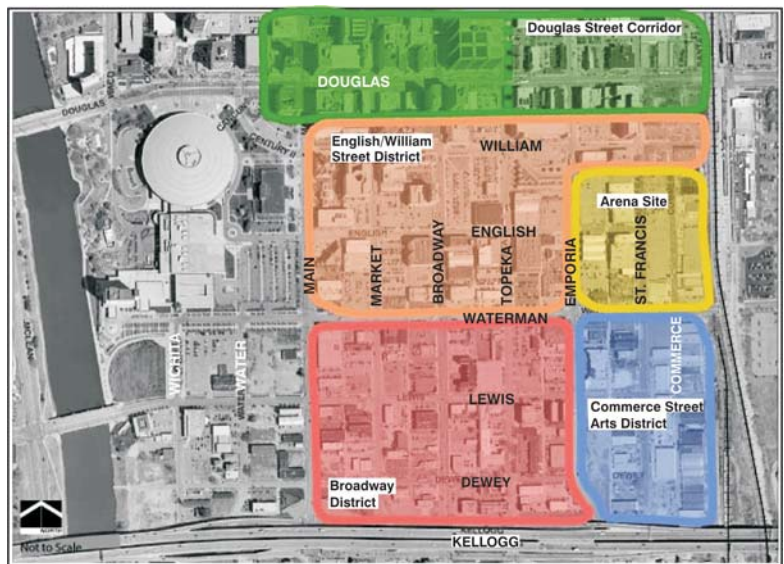
Douglas Street Corridor District Goal - A high intensity corridor with primarily office and support commercial uses and with upper level residential opportunities.

English/William Street District Goal - A walkable urban mixed-use district of primarily commercial and office uses with supporting public and residential uses.

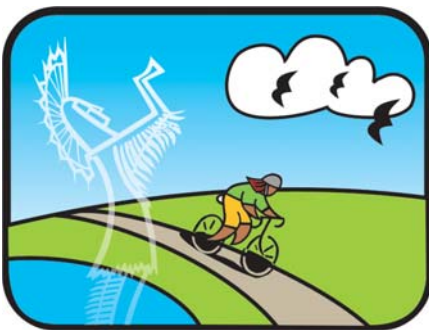
Broadway Neighborhood District Goal - An urban residential environment with support commercial opportunities serving area residents and Kellogg users.

Commerce Street Arts District - An unique experiential arts area with live / work studio opportunities.

The Plan is schedule for adoption as an amendment of the Wichita-Sedgwick County Comprehensive Plan in early 2007 and is avail-



able in draft form at: www.wichita.gov/CityOffices/Planning/AP/Comprehensive/ArenaPlan.htm



PROS Plan

By Scott Wadle

The City of Wichita is excited to announce that efforts are underway to make

Wichita an even better place to live, work, and play; through the creation of the Wichita Park, Recreation, and Open Space (PROS) Plan.

The Wichita PROS Plan will help guide the development, provision, maintenance, and funding of PROS resources for the City of Wichita. The Wichita-Sedgwick County Metropolitan Area Planning Department; Wichita Park and Recreation Department; and Wichita Board of Park Commissioners have been diligently working since December of last year to create a Wichita PROS planning process that will:

- identify community PROS needs;
- create a future vision;
- develop strategies to implement the vision; and
- be adopted by the Wichita City Council as an element of the Wichita-Sedgwick County Comprehensive Plan.

The PROS process will include many opportunities for public involvement, including but not limited to, an enhanced website, mail-out surveys, online surveys, focus groups, stakeholder inter-

views, public open house sessions, and a speaker series. Much of the information gathered through this process will help develop a community needs and resources assessment.

In addition to providing an opportunity for Wichita citizens to get involved, the Wichita PROS planning process will also allow for better coordination with other area communities to ensure that we are providing public PROS resources as efficiently as possible. The Wichita Park Board and City staff are working with Visioneering Wichita to develop a process that communities within the region can utilize to share and coordinate their PROS planning efforts.

The Wichita PROS Plan is a massive undertaking and will require the assistance and coordination of many different organizations and people. The City of Wichita has recently hired Moore Iacofano Goltsman (MIG), a consulting firm from Eugene, Oregon, to assist with the PROS planning process. The MIG team has many years of experience preparing park and recreation master plans for communities throughout the nation. One of their most notable projects has been the strategic plan prepared for the California Parks and Recreation Society, which has been used to train communities throughout the country how to market the true benefits of parks and recreation resources.

For more information about the Wichita PROS Plan, please refer to the City webpage listed below, or contact Scott Wadle, Associate Planner at 352-4855 or email swadle@wichita.gov. <http://www.wichita.gov/CityOffices/Planning/AP/Comprehensive/PROSPlan.htm>

Wichita Area Metropolitan Planning Organization News

For more information regarding the Wichita Area Metropolitan Planning Organization contact Nancy Harvieux at 268-4391

WAMPO Staff Attends AMPO National Conference

By Scott Dunakey

Several WAMPO staff members attended the annual conference of the Association of Metropolitan Planning Organizations (AMPO) October 30–November 3, 2006 in Ft. Lauderdale, Florida. MPO board members, directors, staff and transportation professionals from throughout the United States were in attendance. AMPO provided staff an excellent opportunity to network and mingle with experts and gain insight into many of the universal issues facing MPOs today.

Sessions were offered in seven different subject tracks. WAMPO staff attended sessions that focused on SAFETEA-LU planning requirements, public participation strategies, freight planning, transit planning and MPO organizational strategies. This information will be put to use in the near future, particularly as staff attempts to help WAMPO become 100% SAFETEA-LU compliant.

It became apparent that WAMPO has many of the same regional challenges and issues as other MPOs throughout the country. We can, though, take heart in the fact that we are in a much *better* position than many MPOs. In some states, the MPOs are getting little, if any, say in where transportation funding is spent. Numerous earmarks, cuts in transportation spending, rapid growth and restrictive state Department of Transportation policies have severely limited the ability of some MPOs to proceed with planned projects. Fortunately, the Wichita Area Metropolitan Planning Organization has several projects currently underway.

WAMPO staff has returned from Ft. Lauderdale with fresh ideas on how to tackle some of the difficult problems that MPOs face and look forward to implementing these ideas. However, even more importantly, we have returned with a renewed appreciation for our region and the role we play in planning for its future.



WAMPO Awarded Safe Routes Funding

WAMPO has been awarded \$15,000 to complete a regional Safe Routes to School Plan. For more information, visit the following website: <http://www.wichita.gov/CityOffices/Planning/Transportation/Special+Projects/SafeRoutesToSchool.htm>.

Flood Insurance Rate Map Update and Open House

By Christy Askew

The Flood Insurance Rate Map for Sedgwick County has been updated by the Federal Emergency Management Agency and must be adopted by all jurisdictions by February 2, 2007. In an effort to provide an opportunity for citizens to ask questions as to how the map changes could affect them, the Sedgwick County, Code Enforcement Office has organized an Open House to be held:

Date: January 10, 2007
Time: 11am to 8pm
Location: Sedgwick County Extension Office

All jurisdictions within Sedgwick County are invited to participate. Several organizations have already partnered with the County in this effort including: the City of Wichita, FEMA Region VII, Kansas Department of Water Resources, the National Weather Service, the Army Corps of Engineers, Red Cross, and Salvation Army. Multiple departments within Sedgwick County and the City of Wichita will be available to answer questions. Any jurisdiction interested in participating is encouraged to contact Kelly Dixon at 660-1840 for details.

Welcome, New Planners!

Derrick K. Slocum was born and raised in Emporia, KS and came here after working for almost 2 years in Minturn, Colorado. He obtained a Masters of Regional and Community Planning and a Bachelor of Science degree in Geography with a minor in Planning—both from Kansas State University. Derrick has been married to his wife Buffy for 3 1/2 years and has one 2-year old boy named Jonathan. Derrick is excited about living back in Kansas, being closer to friends and family and having the opportunity to work as an Associate Planner with the Current Plans Division of the Wichita-Sedgwick County Metropolitan Area Planning Department.

Mitch Coffman was born and raised, alongside his two brothers, by James and Karon Coffman in the Como Park area of St. Paul, Minnesota. In 1998, Mitch accepted a job with the St. Paul's Midway Stadium and worked throughout his high school and college career. In addition, while working towards his Bachelor degree, he interned with the Center for Land Use Education, Regional Development Institute, of the University of Wisconsin-River Falls (UWRF), in which he conducted a Cost of Community Services Analysis for the Town of Oak Grove, Wisconsin. Mitch recently graduated with a Bachelor of Science in Land Use Planning with a minor in GIS and Conservation from UWRF. This past November, he accepted the Planning Analyst position with the Wichita Area Metropolitan Planning Organization.

On behalf of the Wichita-Sedgwick County MAPD and the Wichita Area Metropolitan Planning Organization, we would like to welcome the both of you to Wichita!

Derby's New Assistant City Manager

The City of Derby welcomes Mandy M. Wagner as Assistant to the City Manager. Mandy earned a Bachelor of Science degree in Public Relations from Illinois State University in 2004 and a Masters of Public Administration from The University of Kansas in 2006.

She has previously served with the Department of Public Works in Lenexa, Kansas, and the Office of the City Manager in Garden City, Kansas. Mandy assumed her new duties with the City of Derby in June 2006. Her responsibilities include public policy and program development, legislative and intergovernmental relations, and general support of management and elected officials.



Mandy Wagner



**Wichita-Sedgwick County
Metropolitan Area Planning Dept.**
455 N. Main, 10th Floor
Wichita, KS 67202

VISIT OUR WEBSITE AT
www.wichita.gov/CityOffices/Planning/



PLANNING GREAT COMMUNITIES