



CITY OF WICHITA, KANSAS

ORGANIZATIONAL CHART

January 1 – December 31, 2010

MISSION STATEMENT

The mission of the City of Wichita is to provide an environment to protect the health, safety and well being of all who live and work in the community. In directing policies and programs toward that end, the City assumes a stewardship role to preserve the assets and natural resources entrusted to its growth, to assure equality of opportunity and to contribute to the quality of life for all citizens.



INTRODUCTION

- i Title Page with Mission Statement
- ii Table of Contents
- iii Guide to the Organizational Chart
- iv City Organizational Chart

AIRPORT 1

CITY COUNCIL 2

CITY MANAGER'S OFFICE 3

ENVIRONMENTAL SERVICES DEPARTMENT 4

DEPARTMENT OF FINANCE 5

FIRE DEPARTMENT 6

HOUSING AND COMMUNITY SERVICES DEPARTMENT 7

HUMAN RESOURCES DEPARTMENT 8

INFORMATION TECHNOLOGY DEPARTMENT 9

LAW DEPARTMENT 10

LIBRARY DEPARTMENT 11

MUNICIPAL COURT 12

OFFICE OF CENTRAL INSPECTION 13

PARK AND RECREATION DEPARTMENT 14

METROPOLITAN AREA PLANNING DEPARTMENT (MAPD) 15

POLICE DEPARTMENT

- 16 Organizational Chart
- 17 Field Services Division
- 18 Investigations Division
- 19 Support Services Division

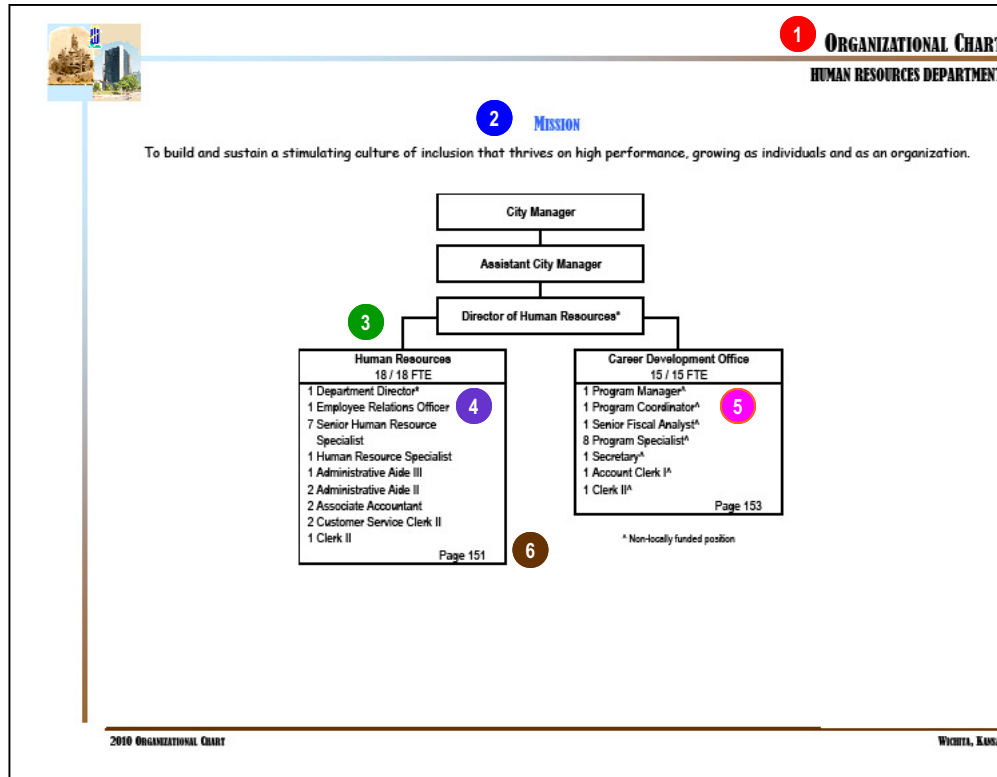
PUBLIC WORKS DEPARTMENT 20

TRANSIT DEPARTMENT 21

WICHITA WATER UTILITIES DEPARTMENT 22

APPENDIX

- 23 Position Summary
- 28 Abbreviations

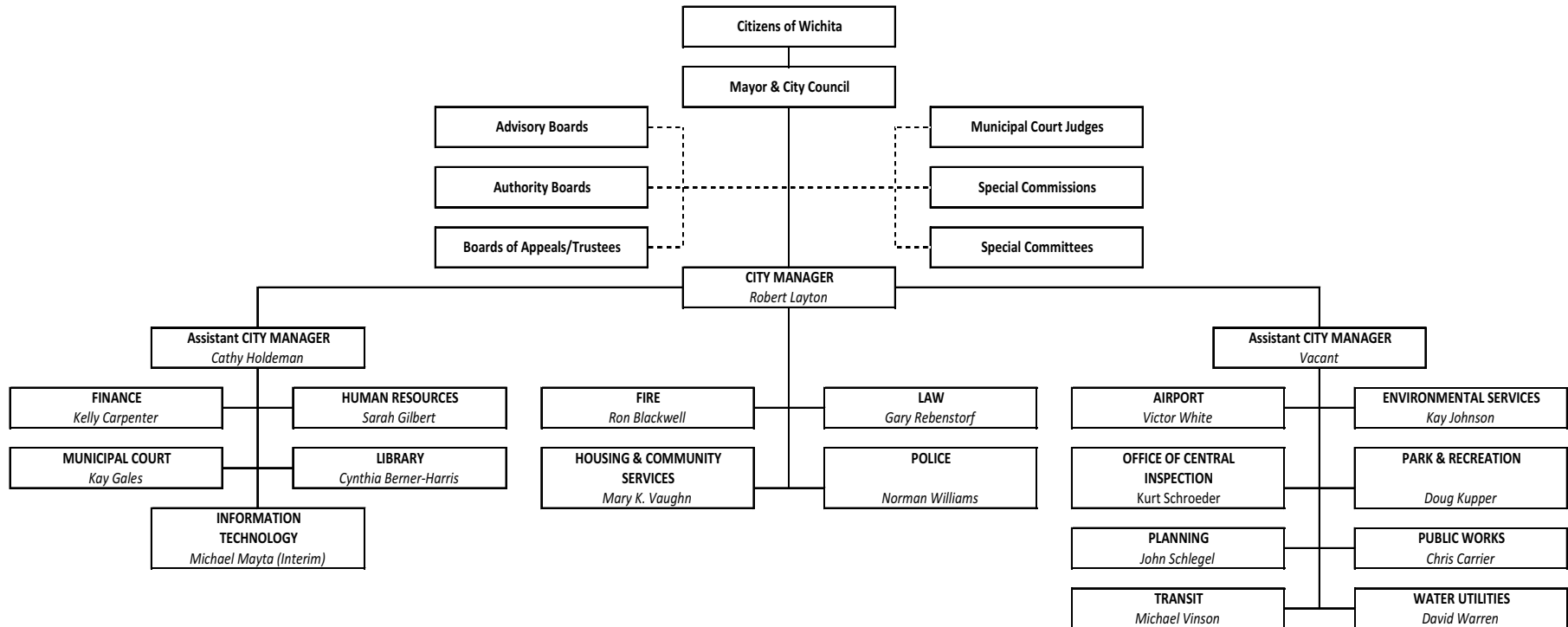


- 1** Each department has an organizational chart, which gives an overview of the overall reporting structure. Some departments have multiple organizational charts in order to fully explain the different divisions within the department.
- 2** The mission statement guides the department in its long-term goals. All services provided by the departments should align with departmental mission statements.
- 3** The Organizational Chart includes boxes for single supervisory positions, divisions within the department and various advisory boards. Division boxes include the number of positions and the full time equivalent within each division. Solid lines between positions and divisions denote a supervisory relationship, while dotted lines denote an advisory relationship.
- 4** Division boxes include all positions within the division based on the 2010 Adopted Budget. These positions are grouped by position title. Some supervisor positions, such as Department Directors, are located separately in the chart to demonstrate the reporting structure. Asterisks (*) are used to denote the division which includes the supervisor position.
- 5** Some positions receive funding through state and federal grants. Carets (^) are used to denote these non-locally funded positions.
- 6** Page numbers within the division boxes refer to the Personal Service pages in the 2010 Supplemental Budget which contain the details for these positions. Page numbers within parenthesis "(See page #)" refer to the page within the Organizational Chart document which contains the detailed organizational chart for that division.



ORGANIZATIONAL CHART

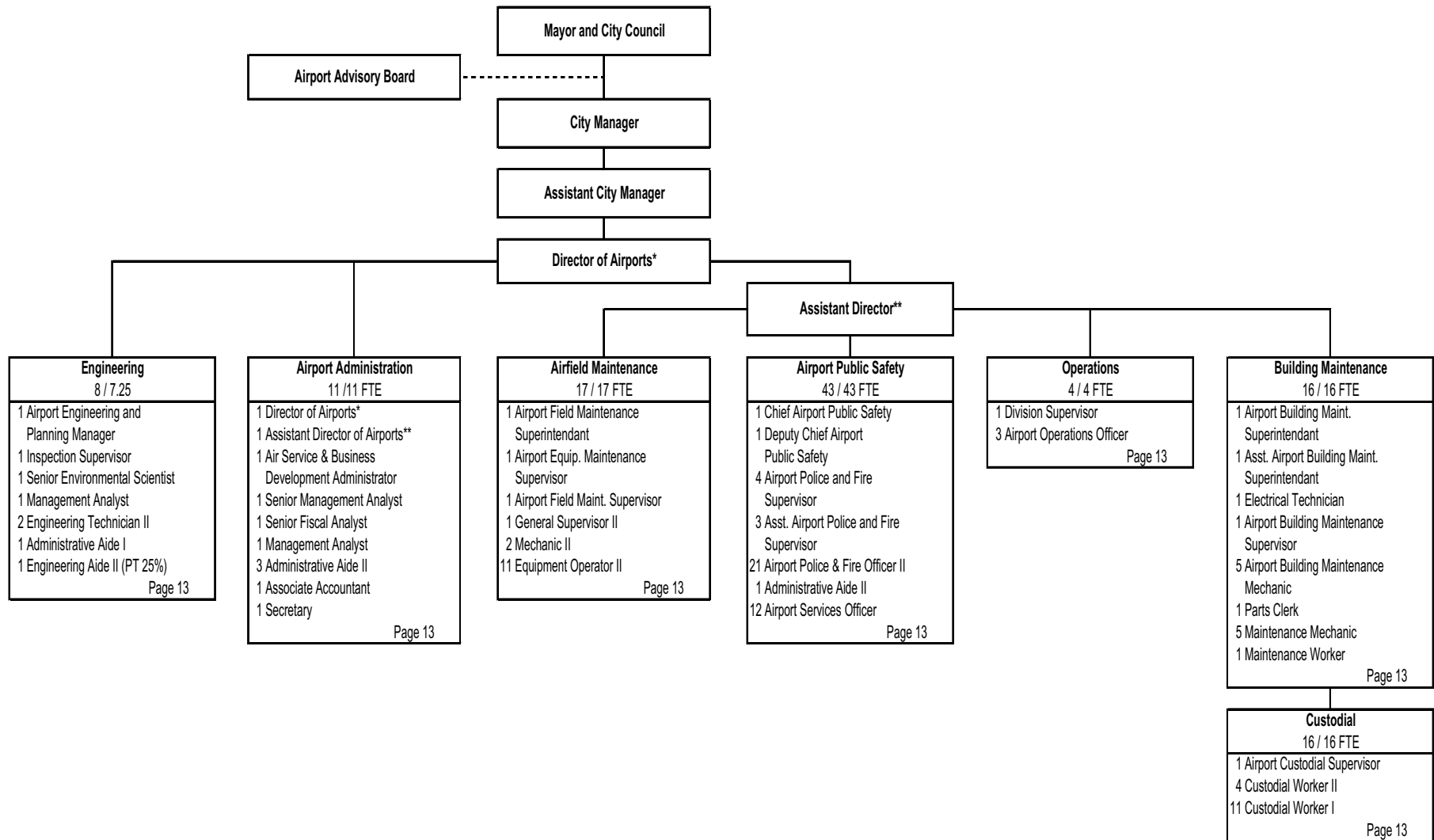
CITY OF WICHITA





MISSION

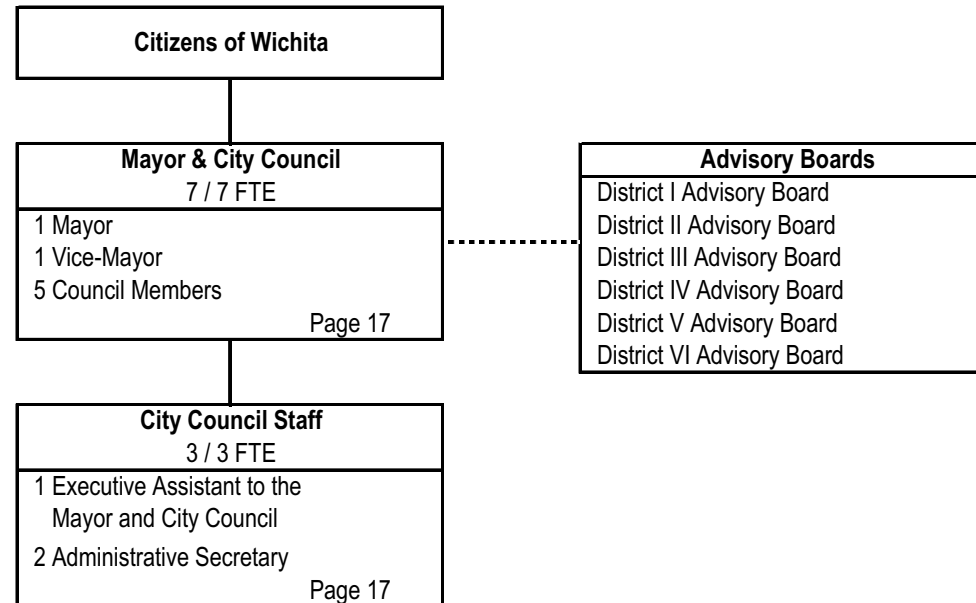
To provide a safe, efficient, customer friendly and fiscally responsible airport system that serves the airport tenants, airport users and the public.





MISSION

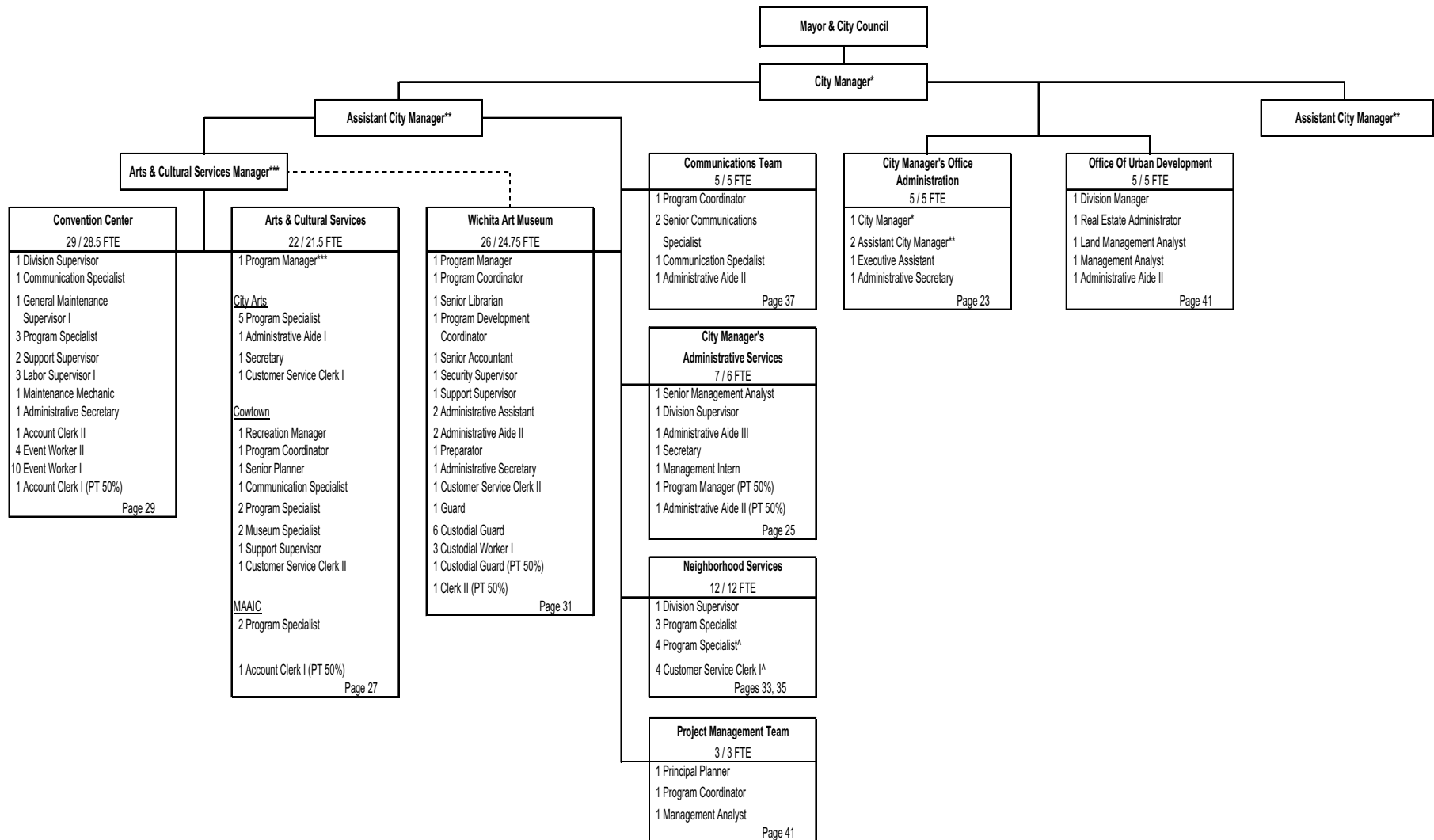
To provide policy direction for the City of Wichita in developing, implementing, and maintaining services to the citizens of Wichita.





MISSION

To provide the professional leadership and management for the City of Wichita.



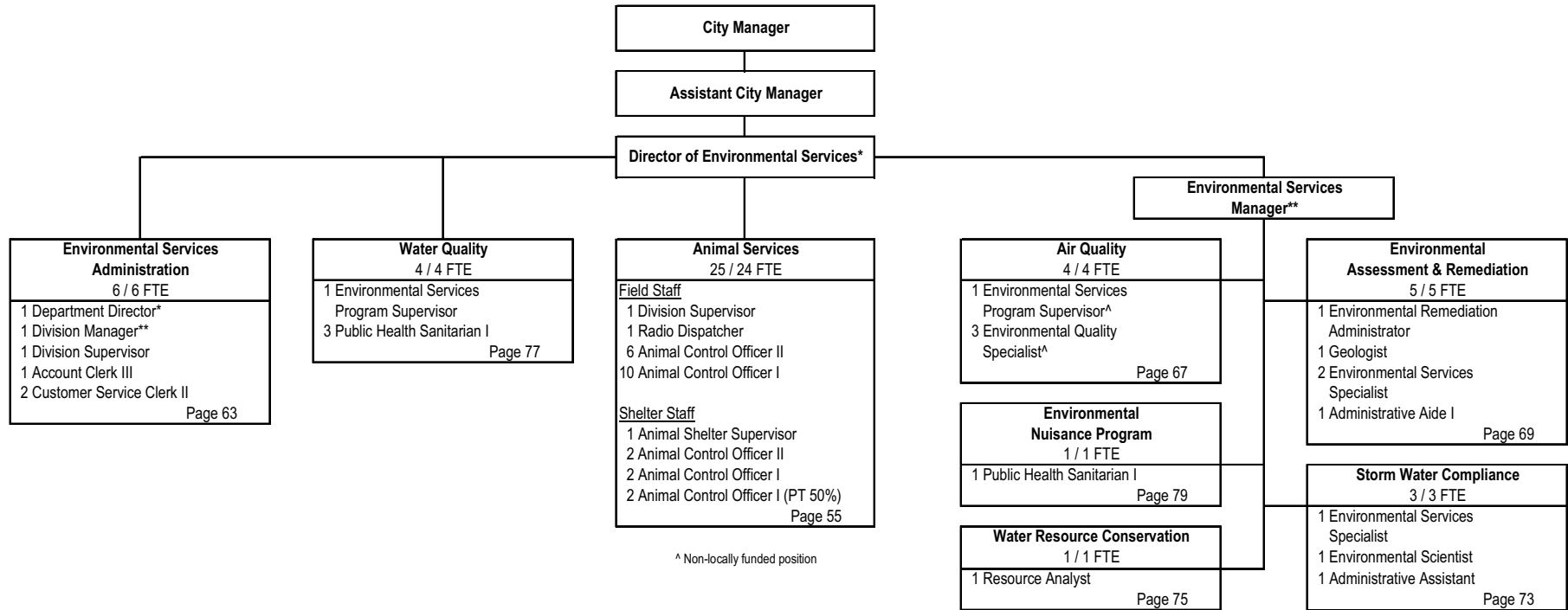


ORGANIZATIONAL CHART

ENVIRONMENTAL SERVICES DEPARTMENT

MISSION

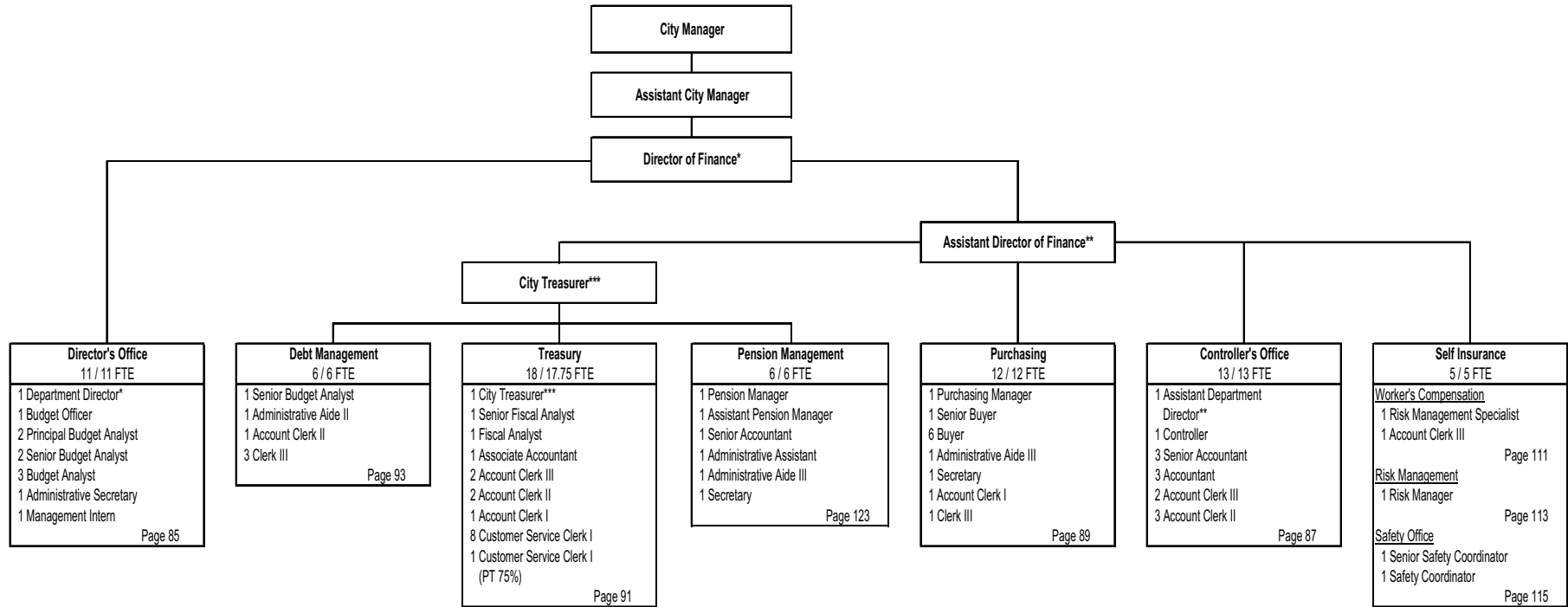
To protect people and preserve the environment through protecting public health and safety and preserving environmental resources.





MISSION

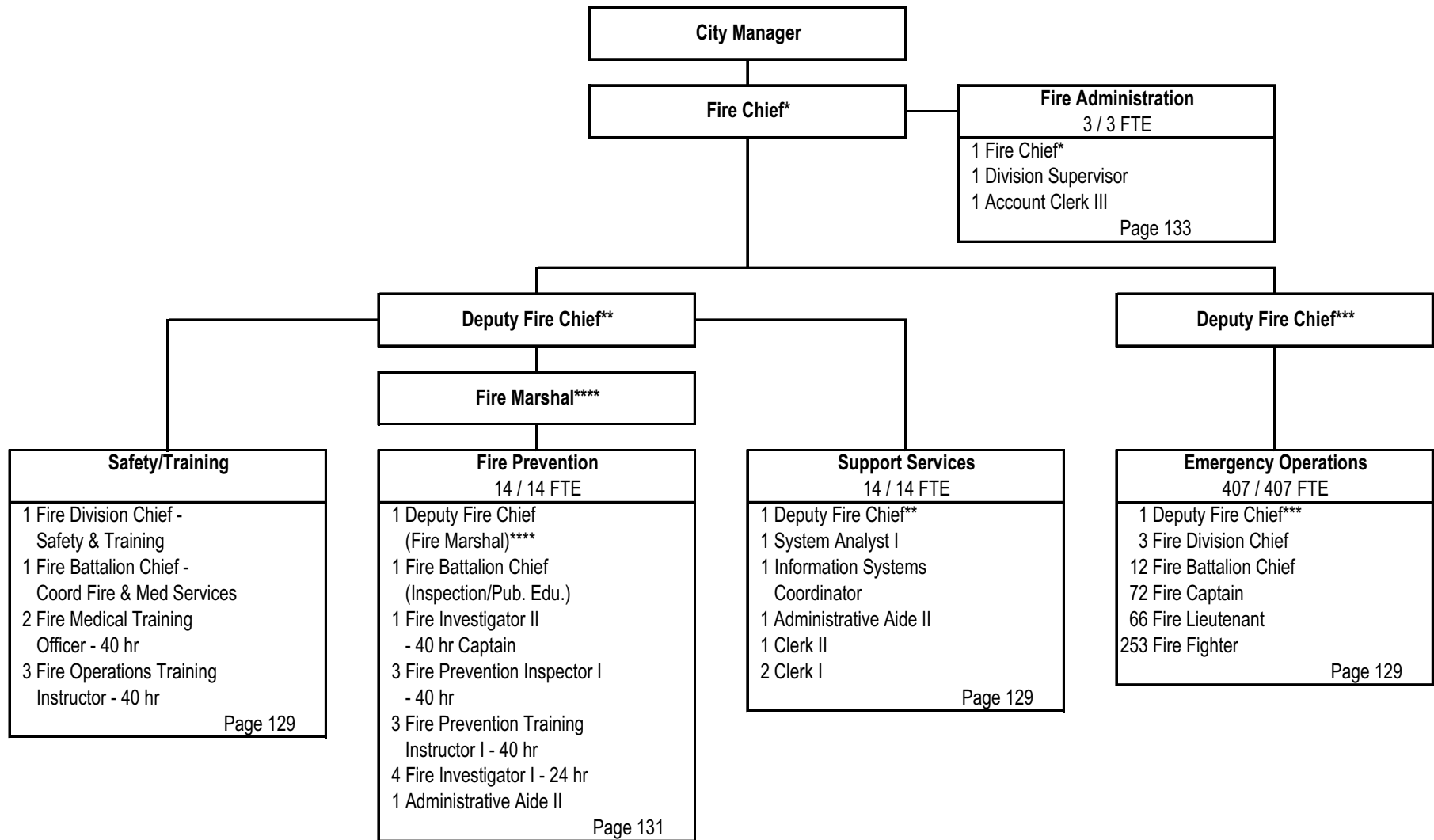
To maintain the fiscal integrity of the City organization through financial services, timely information and analysis, innovation, financial management and appropriate controls.





MISSION

To provide our community excellent, proactive fire and life safety services through prevention, education and protection.



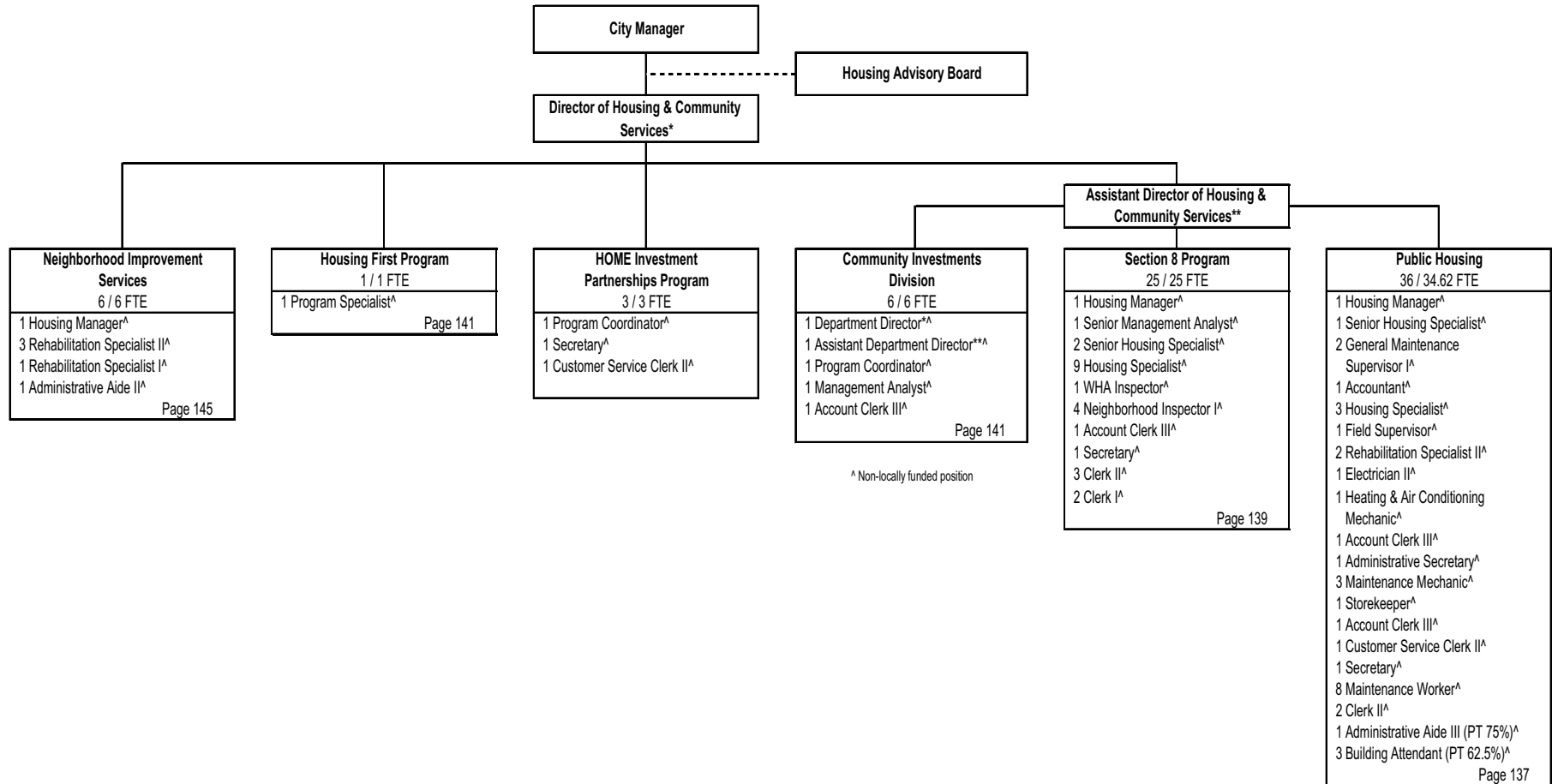


ORGANIZATIONAL CHART

HOUSING AND COMMUNITY SERVICES

MISSION

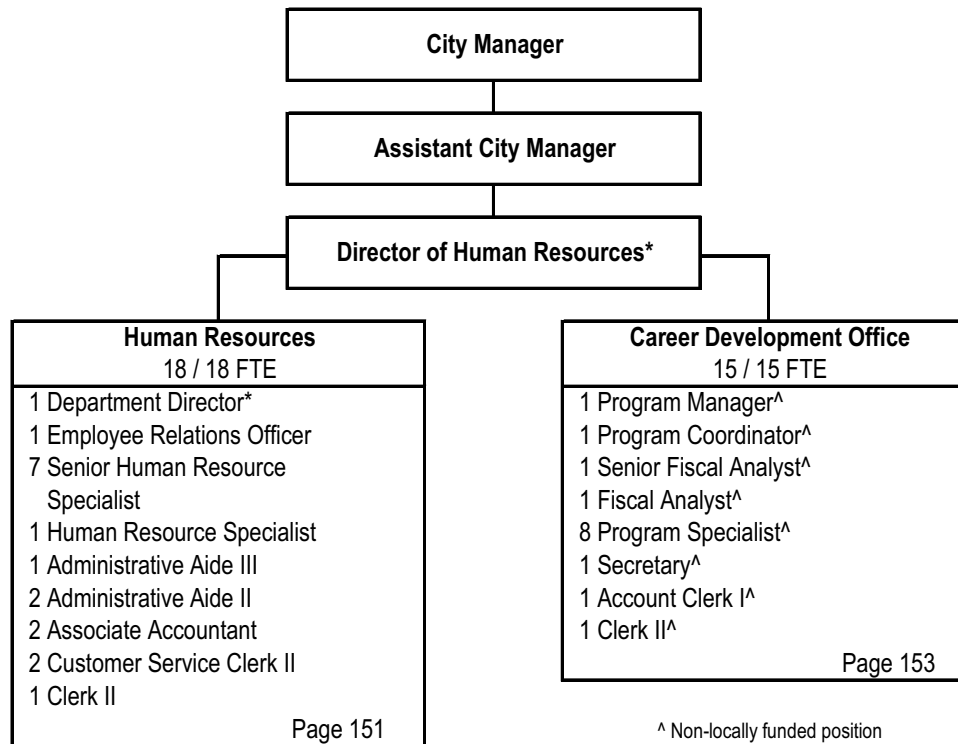
To provide housing and related services to benefit the citizens and neighborhoods of Wichita.





MISSION

To build and sustain a stimulating culture of inclusion that thrives on high performance, growing as individuals and as an organization.



^ Non-locally funded position

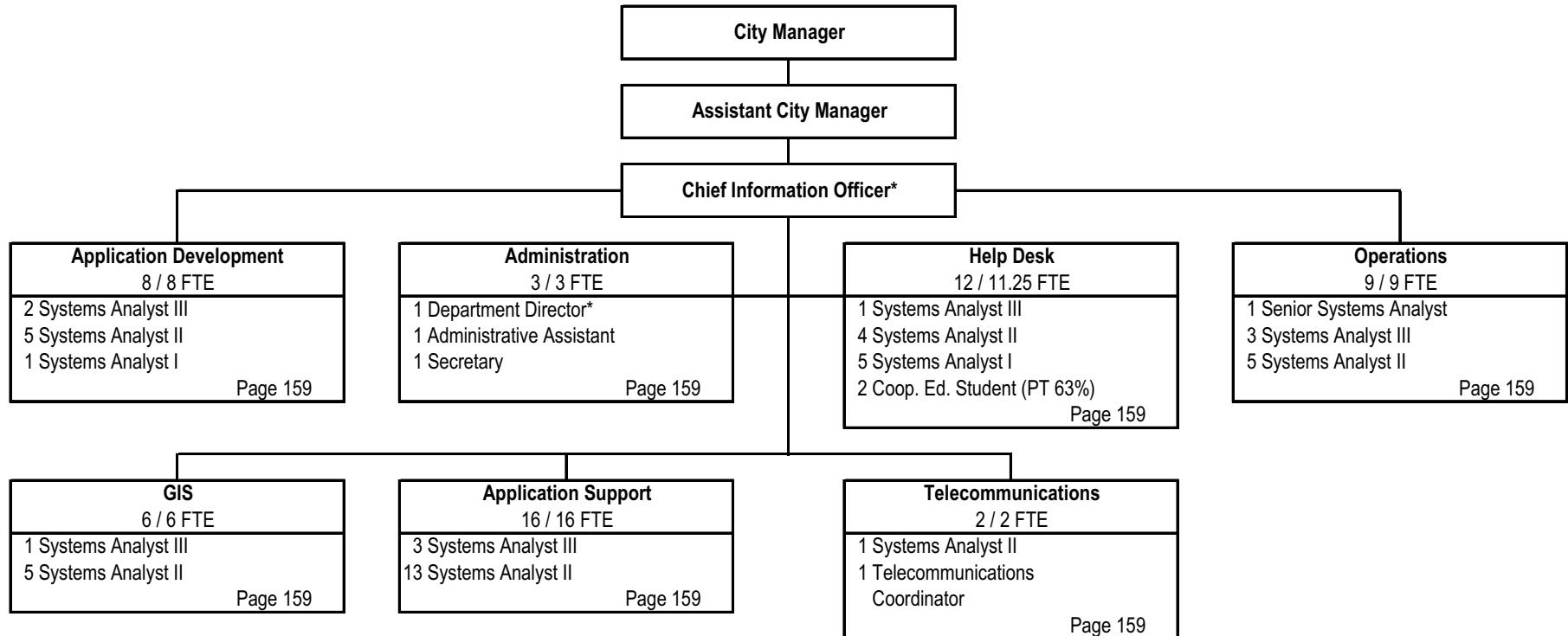


ORGANIZATIONAL CHART

INFORMATION TECHNOLOGY DEPARTMENT

MISSION

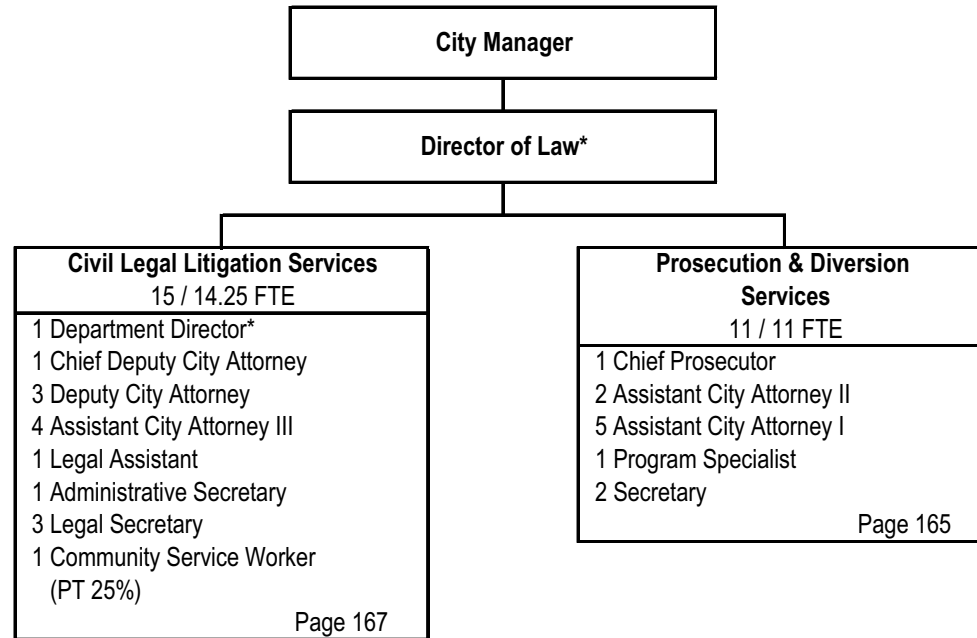
To create, implement, and maintain technology solutions that improve operational efficiencies and expand the City's customer service capabilities.





MISSION

To represent the City in all legal actions, provide legal advice and manage the diversion and deferred judgment programs.



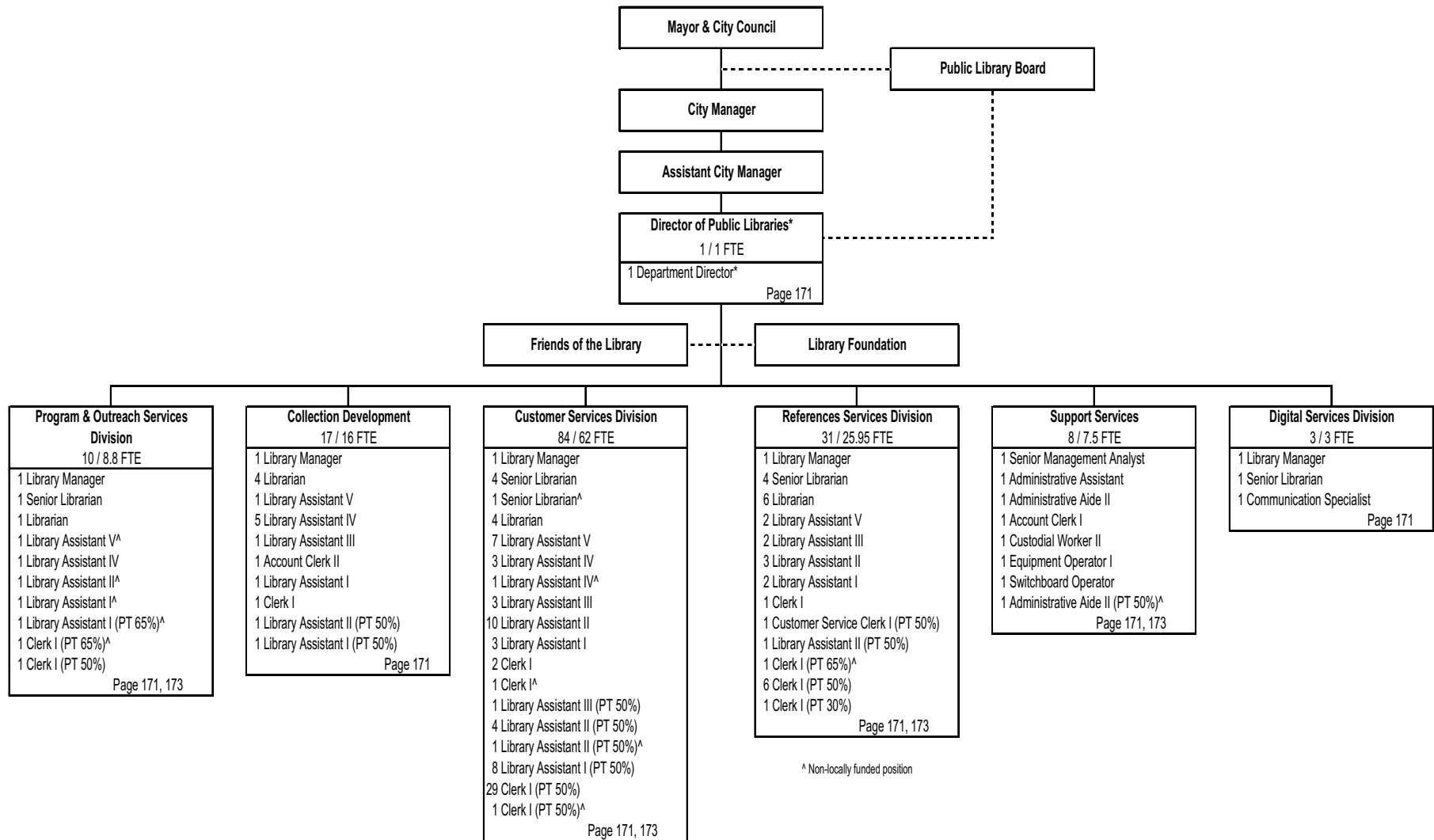


ORGANIZATIONAL CHART

LIBRARY DEPARTMENT

MISSION

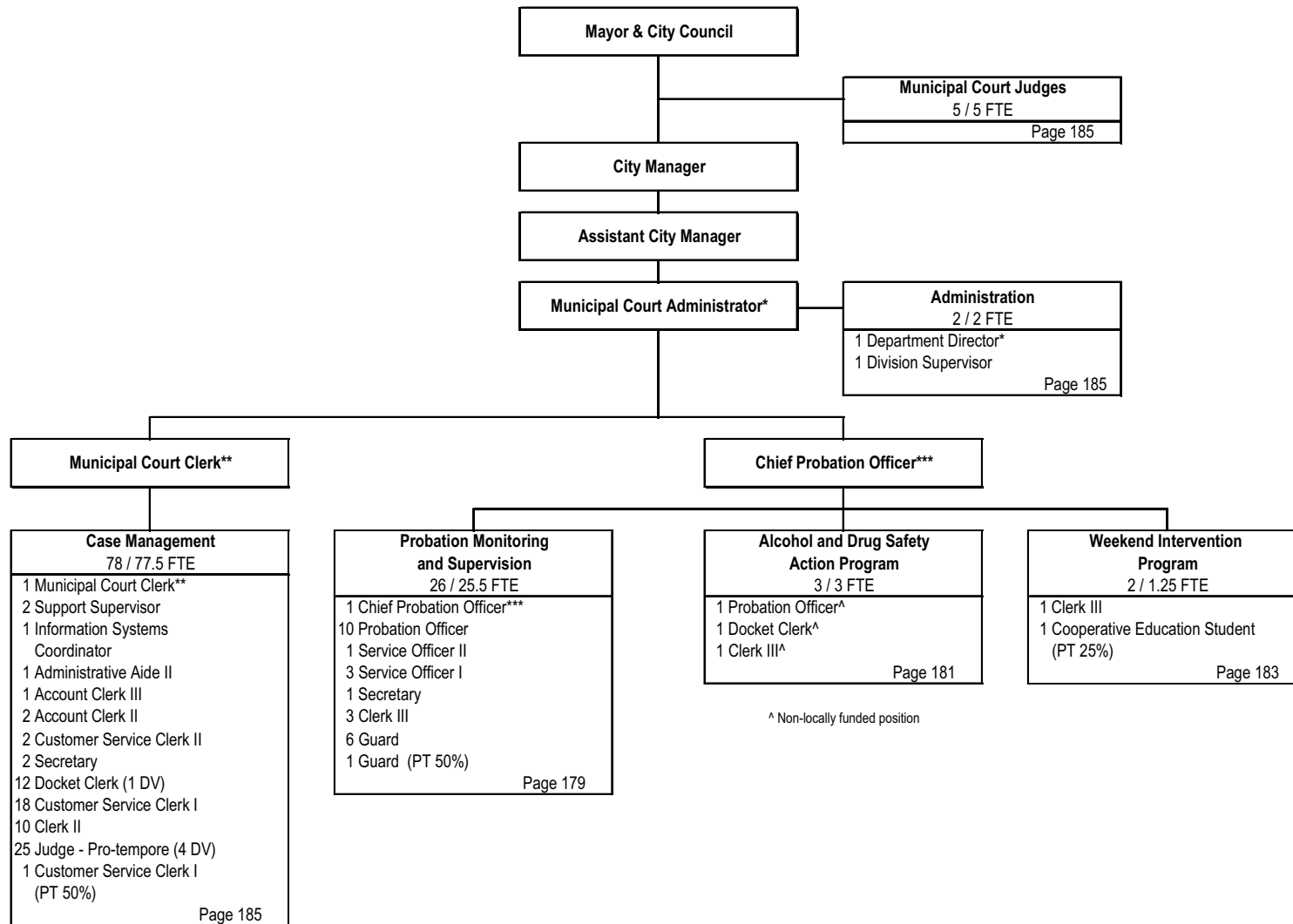
To provide collections and services that inform, entertain and enrich the quality of life in Wichita.





MISSION

To impartially uphold the community's laws and facilitate the interests of justice for all citizens in a thorough and fair manner.



^ Non-locally funded position

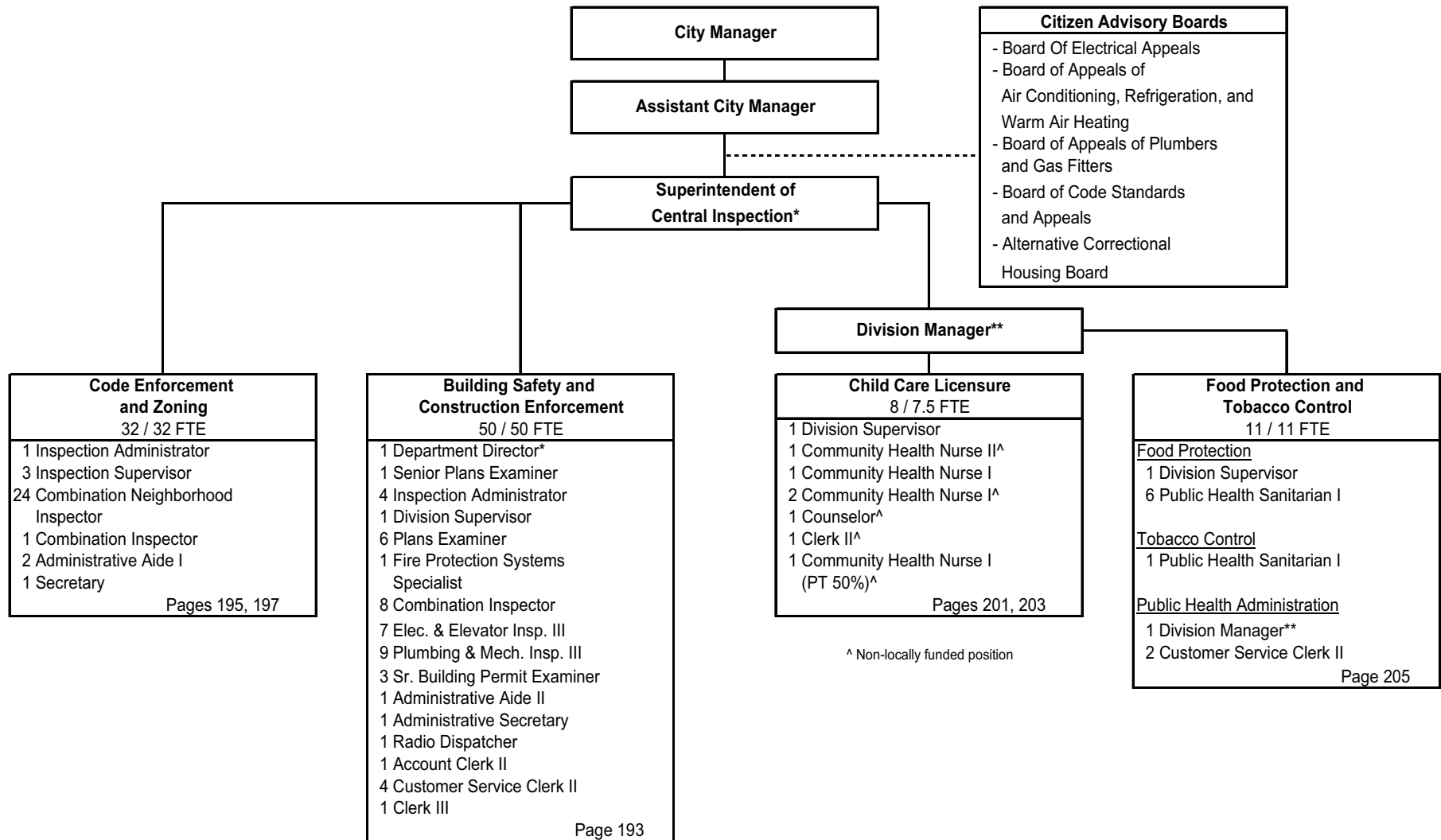


ORGANIZATIONAL CHART

OFFICE OF CENTRAL INSPECTION

MISSION

To protect public safety and health in buildings, neighborhoods, food establishments, and child care facilities.



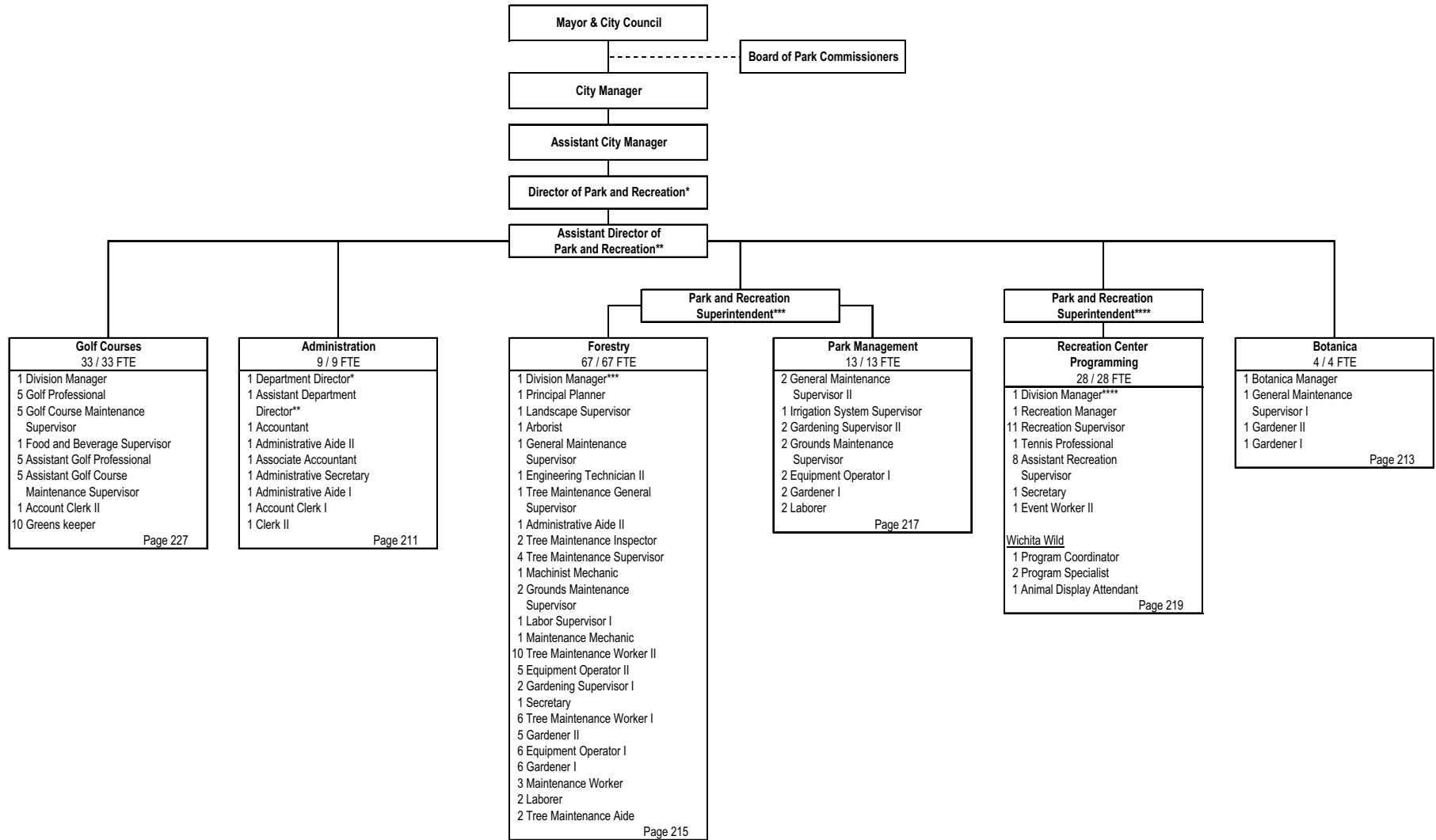


ORGANIZATIONAL CHART

PARK AND RECREATION DEPARTMENT

MISSION

To provide a cost-effective system of safe and attractive parkland and programs to beautify the City, provide leisure activities, and promote appreciation of environmental resources.



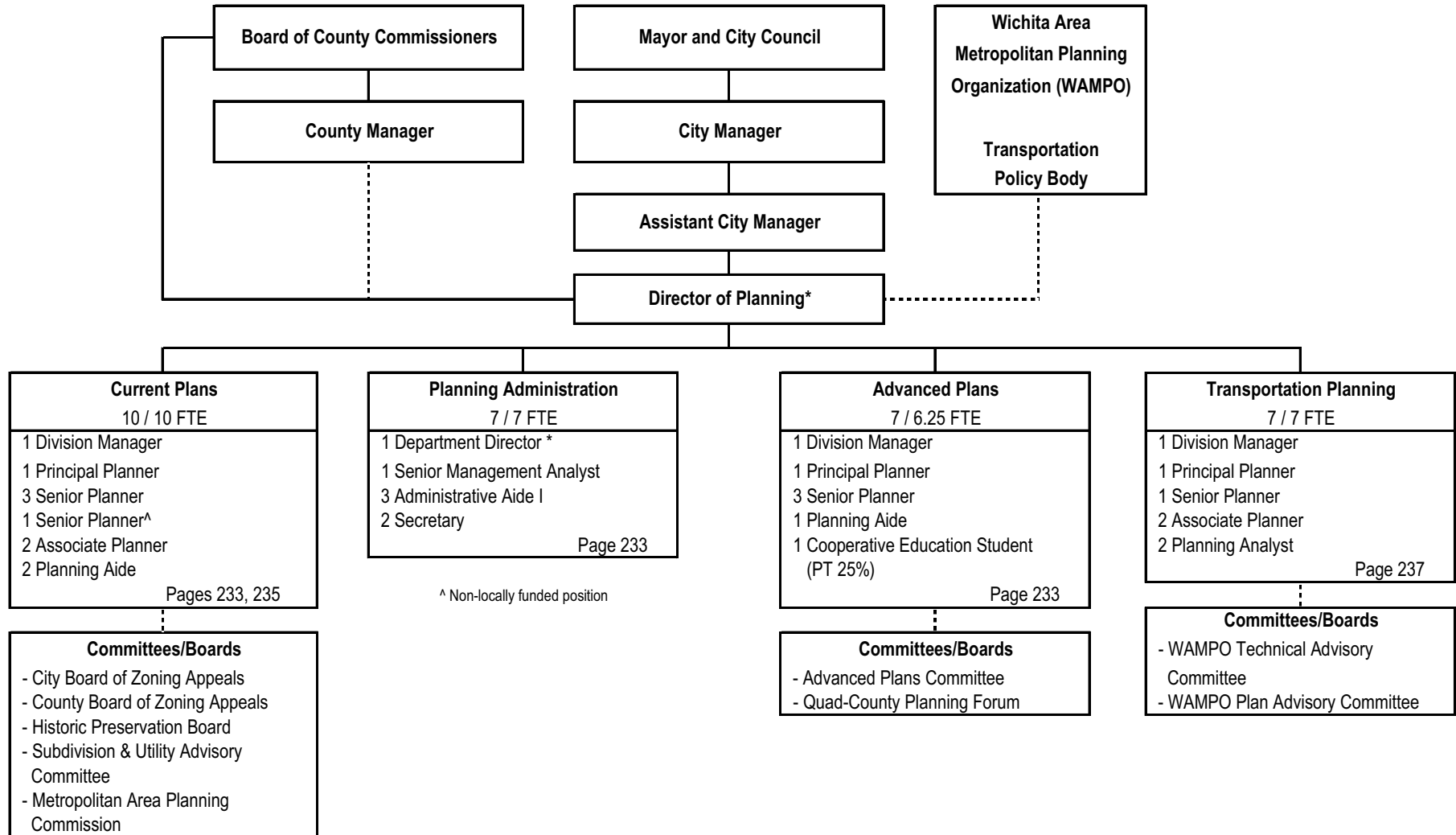


ORGANIZATIONAL CHART

METROPOLITAN AREA PLANNING DEPARTMENT

MISSION

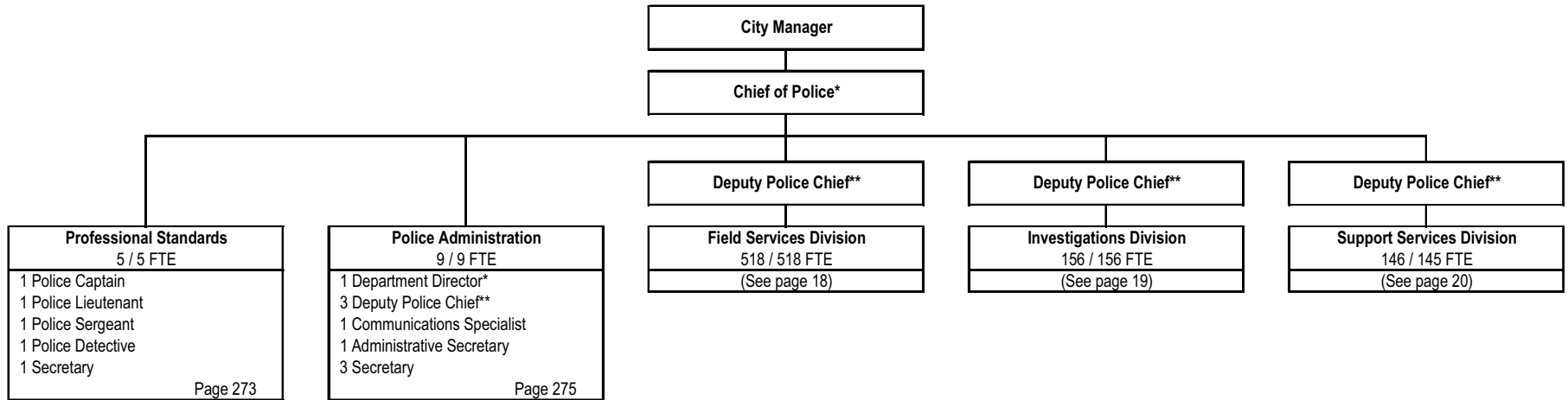
To provide professional planning services to the community regarding land use, community facility and transportation needs so that the Wichita/Sedgwick County metropolitan area continues to be a quality place to live, work and play.

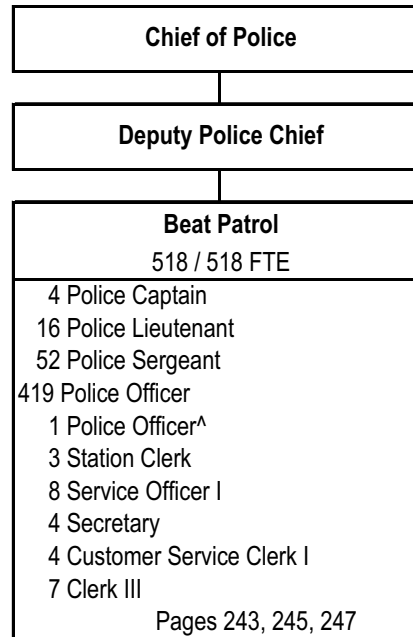




MISSION

To provide professional and ethical public safety services in partnership with citizens to identify prevent and solve the problems of crime, fear of crime, social disorder and neighborhood decay, thereby improving the quality of life in our community.



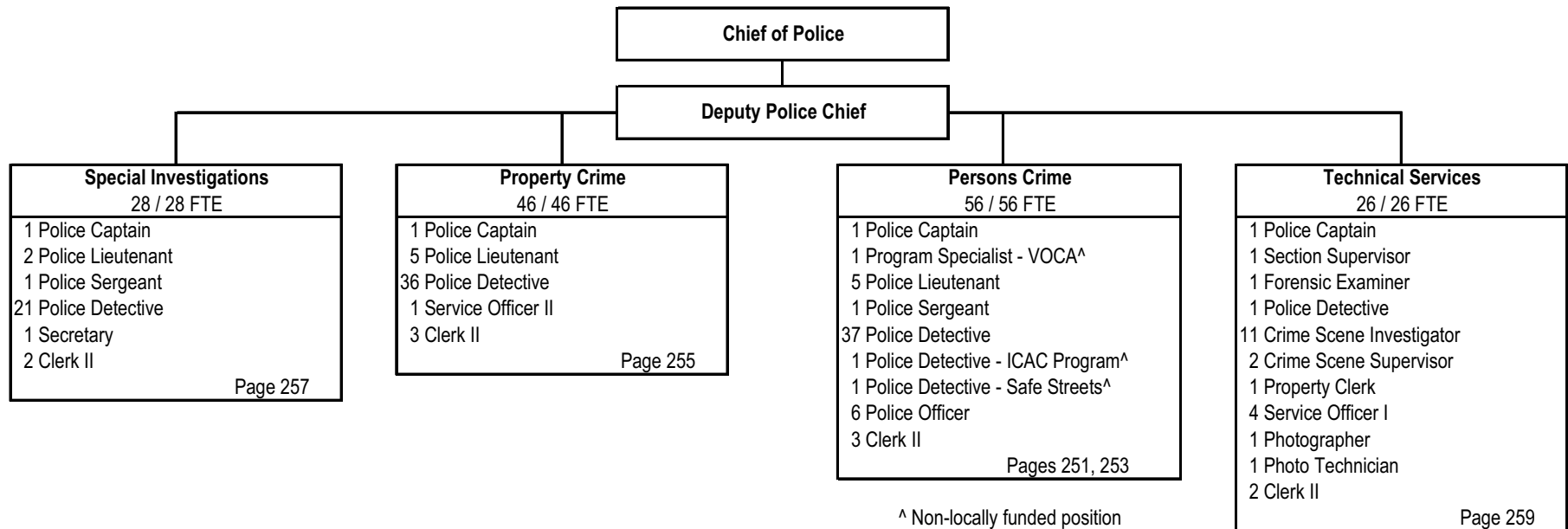


^ Non-locally funded position



POLICE DEPARTMENT

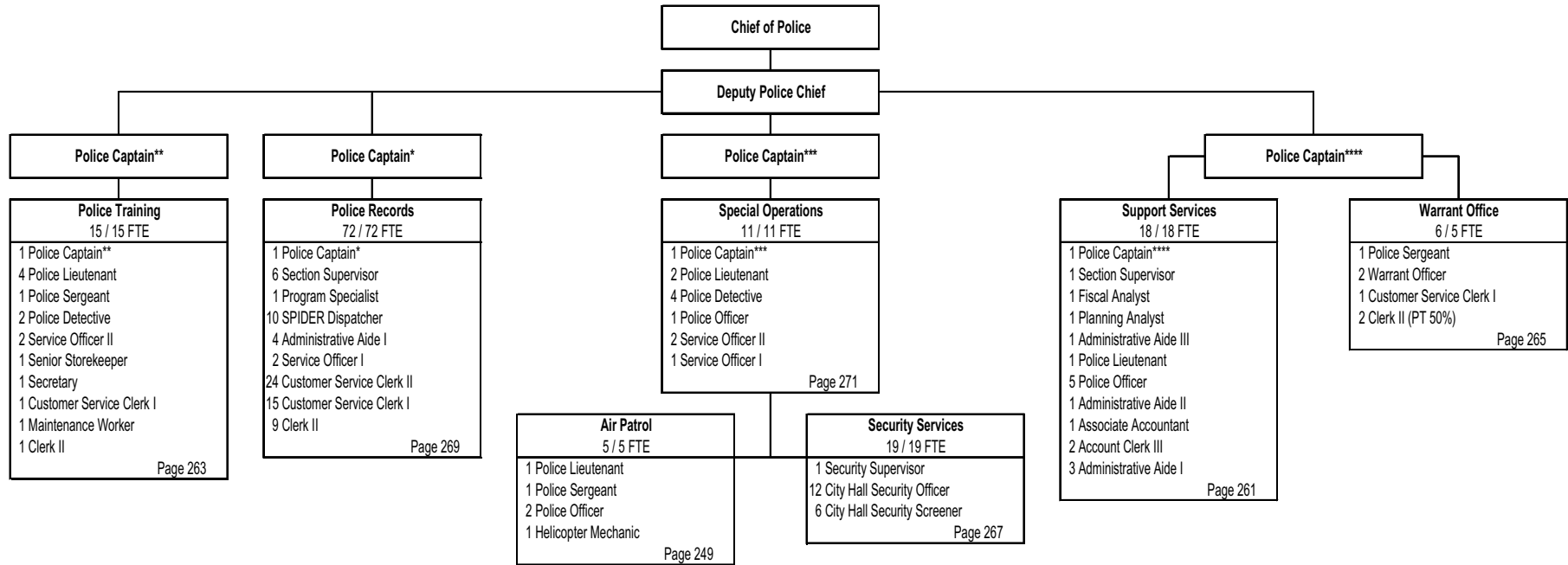
INVESTIGATIONS DIVISION





POLICE DEPARTMENT

SUPPORT SERVICES DIVISION



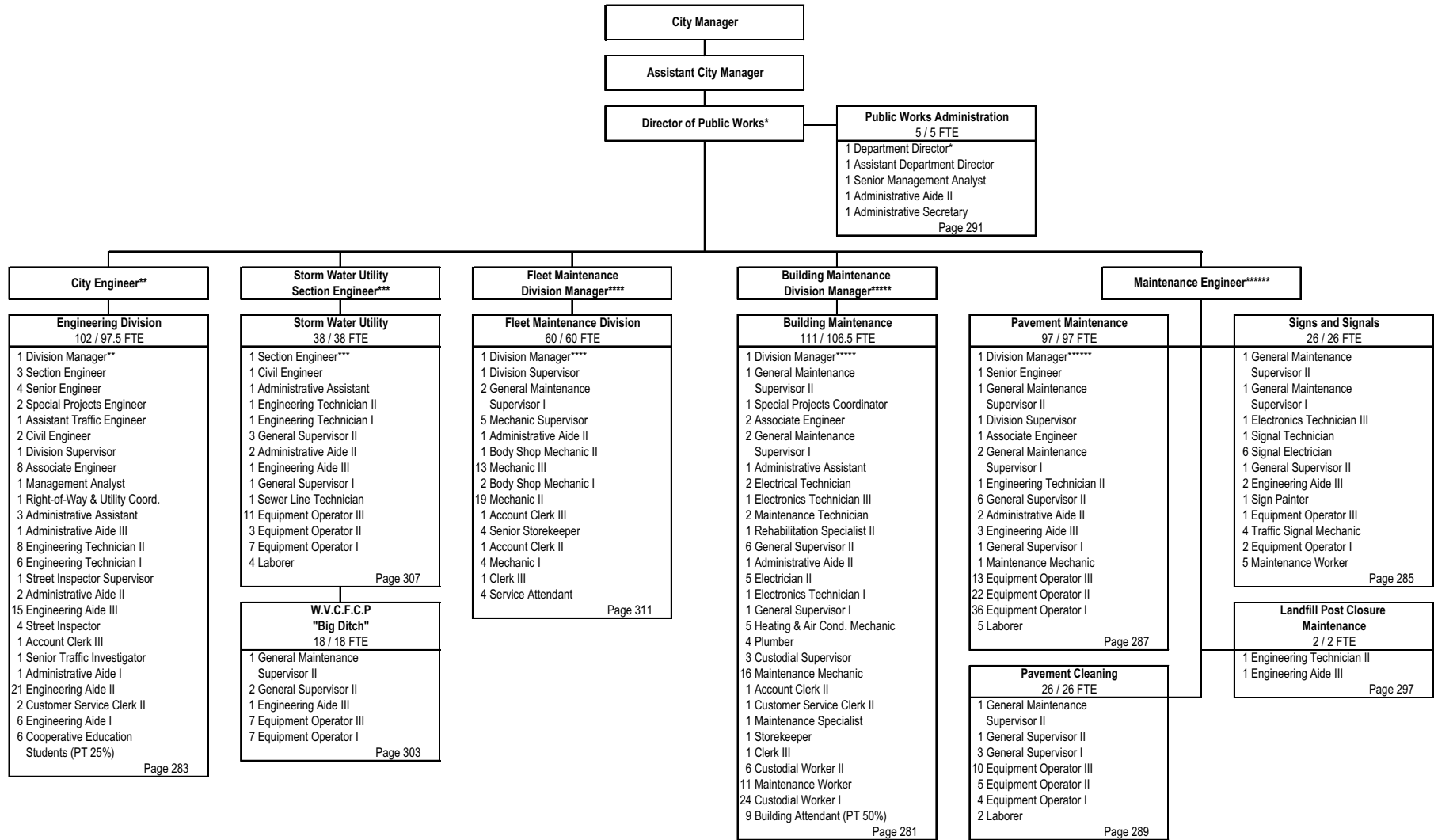


ORGANIZATIONAL CHART

PUBLIC WORKS DEPARTMENT

MISSION

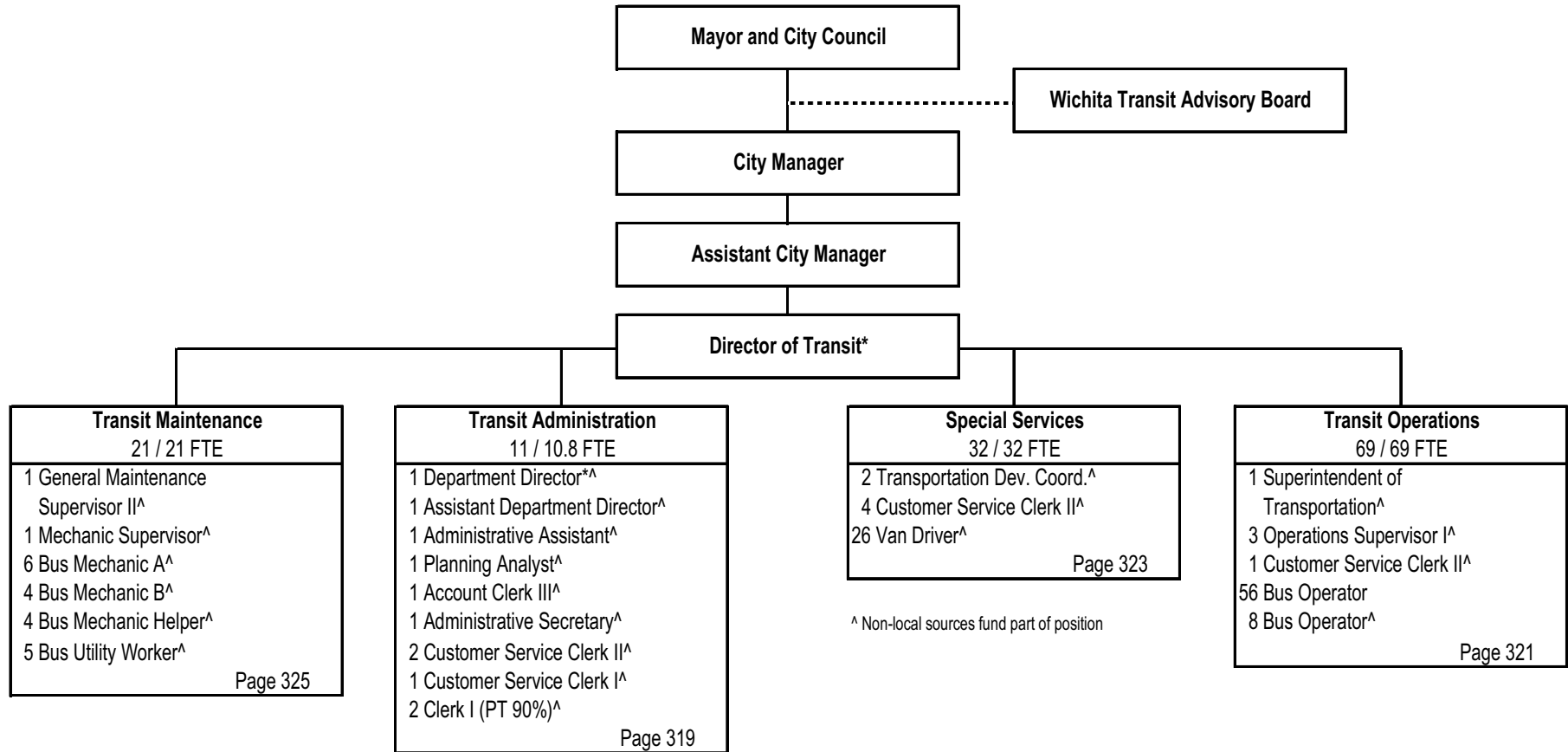
To plan, design, construct, and maintain Wichita streets, bridges, drainage facilities, and buildings, as well as the vehicle and equipment fleet.





MISSION

Provide a safe, reliable, and economical transportation system to the community.



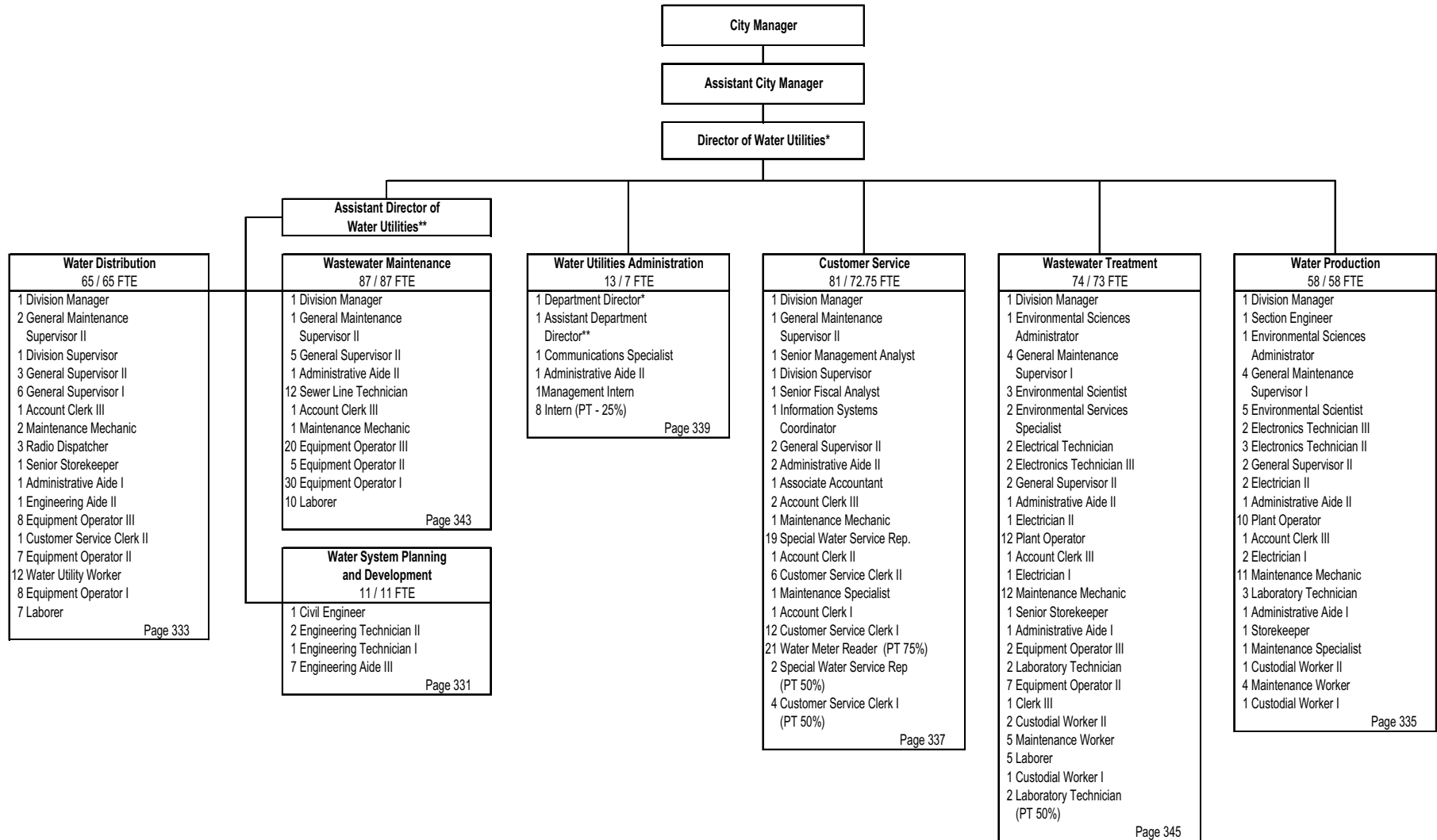


ORGANIZATIONAL CHART

WICHITA WATER UTILITIES DEPARTMENT

MISSION

To provide quality, reliable, customer-convenient water utilities that represent extraordinary value.





POSITION SUMMARY

APPENDIX

POSITION SUMMARY

COMPARISON OF AUTHORIZED POSITIONS, FULL TIME EQUIVALENTS (FTEs) AND FULL TIME POSITIONS

DEPARTMENT - SERVICE	2008 ACTUAL			2009 REVISED			2010 ADOPTED		
	GF	Other	Grant	GF	Other	Grant	GF	Other	Grant
Airport									
Airport Operations	0	115	0	0	115	0	0	115	0
Total Authorized Positions	0	115	0	0	115	0	0	115	0
<i>Total Full Time Equivalents</i>	<i>0</i>	<i>114.25</i>	<i>0</i>	<i>0</i>	<i>114.25</i>	<i>0</i>	<i>0</i>	<i>114.25</i>	<i>0</i>
<i>Total Full Time Positions</i>	<i>0</i>	<i>114</i>	<i>0</i>	<i>0</i>	<i>114</i>	<i>0</i>	<i>0</i>	<i>114</i>	<i>0</i>
City Council									
City Council Administration	10	0	0	10	0	0	10	0	0
Total Authorized Positions	10	0	0	10	0	0	10	0	0
<i>Total Full Time Equivalents</i>	<i>10</i>	<i>0</i>	<i>0</i>	<i>10</i>	<i>0</i>	<i>0</i>	<i>10</i>	<i>0</i>	<i>0</i>
<i>Total Full Time Positions</i>	<i>10</i>	<i>0</i>	<i>0</i>	<i>10</i>	<i>0</i>	<i>0</i>	<i>10</i>	<i>0</i>	<i>0</i>
City Manager									
Administration	5	0	0	5	0	0	5	0	0
Administrative Services	7	0	0	7	0	0	7	0	0
Arts & Cultural Programming	24	0	0	24	0	0	22	0	0
Convention Center	30	0	0	30	0	0	29	0	0
Neighborhood Services	5	0	8	5	0	8	4	0	8
Communications Team	5	0	0	5	0	0	5	0	0
Office of Urban Development	0	6	0	0	9	0	0	8	0
Property Management	0	3	0	0	0	0	0	0	0
Wichita Art Museum	0	26	0	26	0	0	26	0	0
Total Authorized Positions	76	35	8	102	9	8	98	8	8
<i>Total Full Time Equivalents</i>	<i>75.5</i>	<i>33.75</i>	<i>8</i>	<i>101.5</i>	<i>7.75</i>	<i>8</i>	<i>74.0</i>	<i>6.75</i>	<i>8</i>
<i>Total Full Time Positions</i>	<i>74</i>	<i>33</i>	<i>8</i>	<i>100</i>	<i>7</i>	<i>8</i>	<i>73</i>	<i>6</i>	<i>8</i>
Environmental Services									
Animal Control	25	0	0	25	0	0	25	0	0
Child Care Licensure	2	0	6	2	0	6	0	0	0
Food Protection & Tobacco Control	8	0	0	8	0	0	0	0	0
Administration	9	0	0	9	0	0	6	0	0
Air Quality	0	0	4	0	0	4	0	0	4
Environmental Assess. & Remediation	5	0	0	5	0	0	5	0	0
Stormwater Compliance	3	0	0	3	0	0	3	0	0
Water Resource Conservation	1	0	0	1	0	0	1	0	0
Water Quality	4	0	0	4	0	0	4	0	0
Nuisance Abatement	1	0	0	1	0	0	1	0	0
Total Authorized Positions	58	0	10	58	0	10	45	0	4
<i>Total Full Time Equivalents</i>	<i>57.5</i>	<i>0</i>	<i>9</i>	<i>57.5</i>	<i>0</i>	<i>9</i>	<i>44.0</i>	<i>0</i>	<i>4</i>
<i>Total Full Time Positions</i>	<i>56</i>	<i>0</i>	<i>9</i>	<i>56</i>	<i>0</i>	<i>9</i>	<i>44</i>	<i>0</i>	<i>3</i>



POSITION SUMMARY

APPENDIX

POSITION SUMMARY

COMPARISON OF AUTHORIZED POSITIONS, FULL TIME EQUIVALENTS (FTEs) AND FULL TIME POSITIONS

DEPARTMENT - SERVICE	2008 ACTUAL			2009 REVISED			2010 ADOPTED		
	GF	Other	Grant	GF	Other	Grant	GF	Other	Grant
Finance									
Director's Office	11	0	0	11	0	0	11	0	0
Controller's Office	14	0	0	14	0	0	13	0	0
Purchasing	11	0	0	11	0	0	12	0	0
Treasury	19	0	0	19	0	0	18	0	0
Debt Management	6	0	0	6	0	0	6	0	0
Stationery Stores	0	1	0	0	1	0	0	0	0
Workers Compensation	0	2	0	0	2	0	0	2	0
Risk Management	0	1	0	0	1	0	0	1	0
Safety Office	0	2	0	0	2	0	0	2	0
Pension Management	0	6	0	0	6	0	0	6	0
Total Authorized Positions	61	12	0	61	12	0	60	11	0
<i>Total Full Time Equivalents</i>	<i>60.25</i>	<i>12</i>	<i>0</i>	<i>60.25</i>	<i>12</i>	<i>0</i>	<i>59.5</i>	<i>11</i>	<i>0</i>
<i>Total Full Time Positions</i>	<i>58</i>	<i>12</i>	<i>0</i>	<i>58</i>	<i>12</i>	<i>0</i>	<i>57</i>	<i>11</i>	<i>0</i>
Fire									
Operations	405	0	0	419	0	0	421	0	0
Fire Prevention	14	0	0	14	0	0	14	0	0
Administration	3	0	0	3	0	0	3	0	0
Total Authorized Positions	422	0	0	436	0	0	438	0	0
<i>Total Full Time Equivalents</i>	<i>422</i>	<i>0</i>	<i>0</i>	<i>436</i>	<i>0</i>	<i>0</i>	<i>438</i>	<i>0</i>	<i>0</i>
<i>Total Full Time Positions</i>	<i>422</i>	<i>0</i>	<i>0</i>	<i>436</i>	<i>0</i>	<i>0</i>	<i>438</i>	<i>0</i>	<i>0</i>
Housing & Community Services									
Public Housing	0	0	36	0	0	36	0	0	36
Section 8	0	0	25	0	0	25	0	0	25
Community Investments Division	0	0	6	0	0	6	0	0	6
HOME Investments Partnerships Program	0	0	3	0	0	3	0	0	3
Neighborhood Improvement Services	0	0	6	0	0	6	0	0	6
Total Authorized Positions	0	0	76	0	0	76	0	0	76
<i>Total Full Time Equivalents</i>	<i>0</i>	<i>0</i>	<i>74.62</i>	<i>0</i>	<i>0</i>	<i>74.62</i>	<i>0</i>	<i>0</i>	<i>74.62</i>
<i>Total Full Time Positions</i>	<i>0</i>	<i>0</i>	<i>71</i>	<i>0</i>	<i>0</i>	<i>71</i>	<i>0</i>	<i>0</i>	<i>71</i>
Human Resources									
Employee Development	18	0	0	18	0	0	18	0	0
Career Development	0	0	14	0	0	15	0	0	15
Total Authorized Positions	18	0	14	18	0	15	18	0	15
<i>Total Full Time Equivalents</i>	<i>18</i>	<i>0</i>	<i>14</i>	<i>18</i>	<i>0</i>	<i>15</i>	<i>18</i>	<i>0</i>	<i>15</i>
<i>Total Full Time Positions</i>	<i>18</i>	<i>0</i>	<i>14</i>	<i>18</i>	<i>0</i>	<i>15</i>	<i>18</i>	<i>0</i>	<i>15</i>



POSITION SUMMARY

APPENDIX

POSITION SUMMARY

COMPARISON OF AUTHORIZED POSITIONS, FULL TIME EQUIVALENTS (FTEs) AND FULL TIME POSITIONS

DEPARTMENT - SERVICE	2008 ACTUAL			2009 REVISED			2010 ADOPTED		
	GF	Other	Grant	GF	Other	Grant	GF	Other	Grant
IT/IS									
Information Technology Management	0	59	0	0	59	0	0	56	0
Total Authorized Positions	0	59	0	0	59	0	0	56	0
<i>Total Full Time Equivalents</i>	<i>0</i>	<i>58.25</i>	<i>0</i>	<i>0</i>	<i>58.25</i>	<i>0</i>	<i>0</i>	<i>55.25</i>	<i>0</i>
<i>Total Full Time Positions</i>	<i>0</i>	<i>57</i>	<i>0</i>	<i>0</i>	<i>57</i>	<i>0</i>	<i>0</i>	<i>54</i>	<i>0</i>
Law									
Prosecution & Diversion Services	11	0	0	11	0	0	11	0	0
Civil Litigation Services	15	0	0	15	0	0	15	0	0
Total Authorized Positions	26	0	0	26	0	0	26	0	0
<i>Total Full Time Equivalents</i>	<i>25.25</i>	<i>0</i>	<i>0</i>	<i>25.25</i>	<i>0</i>	<i>0</i>	<i>25.25</i>	<i>0</i>	<i>0</i>
<i>Total Full Time Positions</i>	<i>25</i>	<i>0</i>	<i>0</i>	<i>25</i>	<i>0</i>	<i>0</i>	<i>25</i>	<i>0</i>	<i>0</i>
Library									
Library Operations	142	0	13	142	0	12	142	0	12
Total Authorized Positions	142	0	13	142	0	12	142	0	13
<i>Total Full Time Equivalents</i>	<i>114.8</i>	<i>0</i>	<i>9.95</i>	<i>114.8</i>	<i>0</i>	<i>8.95</i>	<i>114.8</i>	<i>0</i>	<i>9.95</i>
<i>Total Full Time Positions</i>	<i>88</i>	<i>0</i>	<i>6</i>	<i>88</i>	<i>0</i>	<i>5</i>	<i>88</i>	<i>0</i>	<i>5</i>
Municipal Court									
Probation Monitoring & Supervision	25	3	0	26	3	0	26	3	0
Weekend Intervention	2	0	0	2	0	0	2	0	0
Case Management	85	0	0	85	0	0	85	0	0
Total Authorized Positions	112	3	0	113	3	0	113	3	0
<i>Total Full Time Equivalents</i>	<i>110.25</i>	<i>3</i>	<i>0</i>	<i>111.25</i>	<i>3</i>	<i>0</i>	<i>111.25</i>	<i>3</i>	<i>0</i>
<i>Total Full Time Positions</i>	<i>84</i>	<i>3</i>	<i>0</i>	<i>85</i>	<i>3</i>	<i>0</i>	<i>85</i>	<i>3</i>	<i>0</i>
Office of Central Inspection									
Building, Safety & Construction Enf.	0	50	0	0	51	0	0	50	0
Code Enforcement	5	26	0	5	27	0	5	27	0
Child Care Licensure	0	0	0	0	0	0	2	0	6
Food Protection	0	0	0	0	0	0	11	0	0
Total Authorized Positions	5	76	0	5	78	0	18	77	6
<i>Total Full Time Equivalents</i>	<i>5</i>	<i>77</i>	<i>0</i>	<i>5</i>	<i>78</i>	<i>0</i>	<i>18</i>	<i>77</i>	<i>6</i>
<i>Total Full Time Positions</i>	<i>5</i>	<i>76</i>	<i>0</i>	<i>5</i>	<i>78</i>	<i>0</i>	<i>18</i>	<i>77</i>	<i>5</i>



POSITION SUMMARY

APPENDIX

POSITION SUMMARY

COMPARISON OF AUTHORIZED POSITIONS, FULL TIME EQUIVALENTS (FTEs) AND FULL TIME POSITIONS

DEPARTMENT - SERVICE	2008 ACTUAL			2009 REVISED			2010 ADOPTED		
	GF	Other	Grant	GF	Other	Grant	GF	Other	Grant
<u>Park</u>									
Administration	9	0	0	9	0	0	9	0	0
Botanica	4	0	0	4	0	0	4	0	0
Forestry & Central Support	67	0	0	67	0	0	67	0	0
Park Management	80	0	0	80	0	0	13	0	0
Recreation Center Programming	29	0	0	29	0	0	28	0	0
Golf	0	38	0	0	38	0	0	33	0
Total Authorized Positions	189	38	0	189	38	0	121	33	0
<i>Total Full Time Equivalents</i>	<i>184</i>	<i>38</i>	<i>0</i>	<i>184</i>	<i>38</i>	<i>0</i>	<i>116.50</i>	<i>33</i>	<i>0</i>
<i>Total Full Time Positions</i>	<i>183</i>	<i>38</i>	<i>0</i>	<i>183</i>	<i>38</i>	<i>0</i>	<i>116</i>	<i>33</i>	<i>0</i>
<u>Metropolitan Planning</u>									
Metropolitan Planning	0	23	1	0	23	1	0	23	1
Transportation Planning	0	0	7	0	0	7	0	0	7
Total Authorized Positions	0	23	8	0	23	8	0	23	8
<i>Total Full Time Equivalents</i>	<i>0</i>	<i>22.25</i>	<i>8</i>	<i>0</i>	<i>22.25</i>	<i>8</i>	<i>0</i>	<i>22.25</i>	<i>8</i>
<i>Total Full Time Positions</i>	<i>0</i>	<i>22</i>	<i>8</i>	<i>0</i>	<i>22</i>	<i>8</i>	<i>0</i>	<i>22</i>	<i>8</i>
<u>Police</u>									
School Services	22	0	0	22	0	0	11	0	0
Beat Patrol	510	0	1	510	0	1	506	0	1
Air Patrol	5	0	0	5	0	0	5	0	0
Persons Crime Investigations	51	0	4	53	0	3	53	0	3
Property Crime Investigations	51	0	0	50	0	0	46	0	0
Special Investigations	29	0	0	28	0	0	28	0	0
Technical Services	27	0	0	26	0	0	26	0	0
Support Services	21	0	0	21	0	0	18	0	0
Police Training	16	0	0	16	0	0	15	0	0
Warrant Office	8	0	0	6	0	0	6	0	0
Security Services	18	0	0	19	0	0	19	0	0
Police Records	72	0	0	73	0	0	72	0	0
Special Operations	11	0	0	11	0	0	11	0	0
Professional Standards	5	0	0	5	0	0	5	0	0
Administration	9	0	0	9	0	0	9	0	0
Total Authorized Positions	855	0	5	854	0	4	830	0	4
<i>Total Full Time Equivalents</i>	<i>853</i>	<i>0</i>	<i>5</i>	<i>852</i>	<i>0</i>	<i>4</i>	<i>828.50</i>	<i>0</i>	<i>4</i>
<i>Total Full Time Positions</i>	<i>851</i>	<i>0</i>	<i>5</i>	<i>850</i>	<i>0</i>	<i>4</i>	<i>826</i>	<i>0</i>	<i>4</i>



POSITION SUMMARY

APPENDIX

POSITION SUMMARY

COMPARISON OF AUTHORIZED POSITIONS, FULL TIME EQUIVALENTS (FTEs) AND FULL TIME POSITIONS

DEPARTMENT - SERVICE	2008 ACTUAL			2009 REVISED			2010 ADOPTED		
	GF	Other	Grant	GF	Other	Grant	GF	Other	Grant
Public Works									
Building Maintenance	111	0	0	111	0	0	111	0	0
Engineering	102	0	0	102	0	0	102	0	0
Signs and Signals	26	0	0	26	0	0	26	0	0
Pavement Maintenance	97	0	0	97	0	0	97	0	0
Pavement Cleaning	26	0	0	26	0	0	26	0	0
Administration	5	0	0	5	0	0	5	0	0
Landfill Post Closure Maintenance	0	2	0	0	2	0	0	2	0
Wichita/Valley Center Flood Control	0	18	0	0	18	0	0	18	0
Stormwater Utility	0	38	0	0	38	0	0	38	0
Fleet Maintenance	0	60	0	0	60	0	0	60	0
Total	367	118	0	367	118	0	367	118	0
<i>Total Full Time Equivalents</i>	<i>358.00</i>	<i>118.00</i>	<i>0.00</i>	<i>358.00</i>	<i>118.00</i>	<i>0.00</i>	<i>358.00</i>	<i>118.00</i>	<i>0.00</i>
<i>Total Full Time Positions</i>	<i>352</i>	<i>118</i>	<i>0</i>	<i>352</i>	<i>118</i>	<i>0</i>	<i>352</i>	<i>118</i>	<i>0</i>
Transit									
Administration	0	11	0	0	11	0	0	11	0
Operations	0	69	0	0	69	0	0	69	0
Special Services	0	30	0	0	32	0	0	32	0
Maintenance	0	0	20	0	0	21	0	21	21
Total	0	110	20	0	112	21	0	133	21
<i>Total Full Time Equivalents</i>	<i>0</i>	<i>109.8</i>	<i>20</i>	<i>0</i>	<i>111.8</i>	<i>21</i>	<i>0</i>	<i>111.8</i>	<i>21</i>
<i>Total Full Time Positions</i>	<i>0</i>	<i>108</i>	<i>20</i>	<i>0</i>	<i>111</i>	<i>21</i>	<i>0</i>	<i>111</i>	<i>21</i>
Wichita Water Utilities									
Water System Planning & Development	0	11	0	0	11	0	0	11	0
Water Distribution	0	68	0	0	65	0	0	65	0
Water Production	0	57	0	0	58	0	0	58	0
Customer Service	0	80	0	0	83	0	0	81	0
Administration	0	14	0	0	13	0	0	13	0
Wastewater Maintenance	0	87	0	0	87	0	0	87	0
Wastewater Treatment	0	76	0	0	76	0	0	74	0
Total	0	393	0	0	393	0	0	389	0
<i>Total Full Time Equivalents</i>	<i>0</i>	<i>376.75</i>	<i>0</i>	<i>0</i>	<i>376.75</i>	<i>0</i>	<i>0</i>	<i>372.75</i>	<i>0</i>
<i>Total Full Time Positions</i>	<i>0</i>	<i>354</i>	<i>0</i>	<i>0</i>	<i>354</i>	<i>0</i>	<i>0</i>	<i>350</i>	<i>0</i>
Total Authorized Positions	2,341	982	154	2,381	960	154	2,286	966	155
Total Full Time Equivalents	2,293.55	963.05	148.57	2,333.55	940.05	148.57	2,215.80	925.05	149.57
Total Full Time Positions	2,226.00	935.00	141.00	2,266.00	914.00	141.00	2,150.00	899.00	140.00



—G—

GIS. *Geographic Information Services.*

—I—

ICAC. *Internet Crimes Against Children.*

—M—

MAAIC. *Mid America All Indian Center.*

—S—

SPIDER. *Special Police Information Data Entry and Retrieval.*

—V—

VOCA. *Victims of Crime Act.*

—W—

WAMPO. *Wichita Area Metropolitan Planning Organization.*

WVCFCP. *Wichita Valley Center Flood Control Project.*