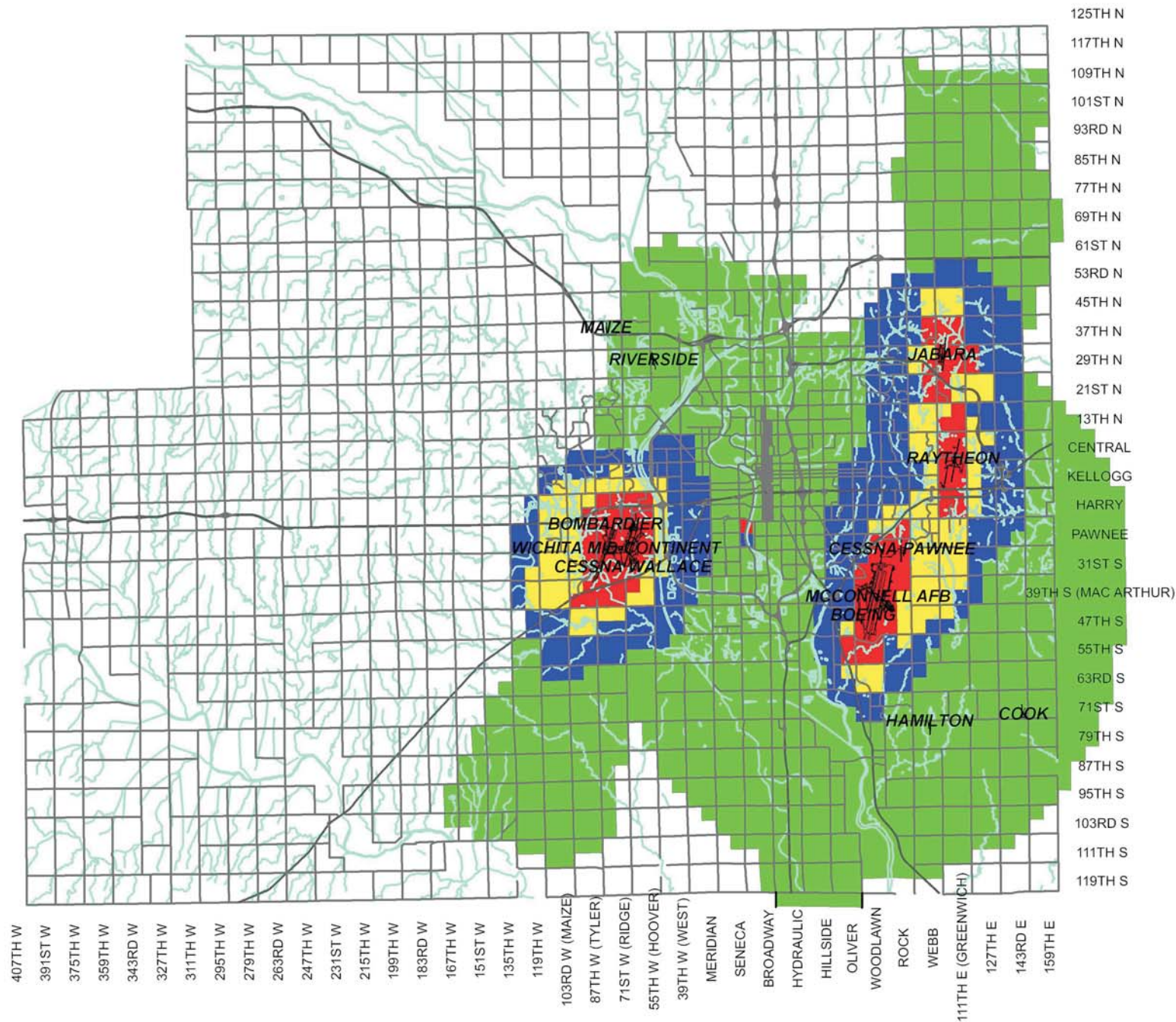


# AIRPORT HAZARD ZONES



## Airport Hazard Zones

### Hazard zone

- Area A
- Area B
- Area C
- Area D

Software: ARC/INFO 7.2 (NETWORK)  
 ArcView GIS Ver. 3.2  
 Hardware: DEC ALPHA 2100A  
 Plotter: HP 7550C

Map Data Sources:  
 Road centerlines  
 provided by  
 City of Wichita GIS and  
 Sedgewick County GIS.  
 City Limit boundaries



It is understood that while the City of Wichita Data Center Geographic Information Systems Department has not indicated and we do not believe that there are inaccuracies in information incorporated in the base map, the Data Center GIS user