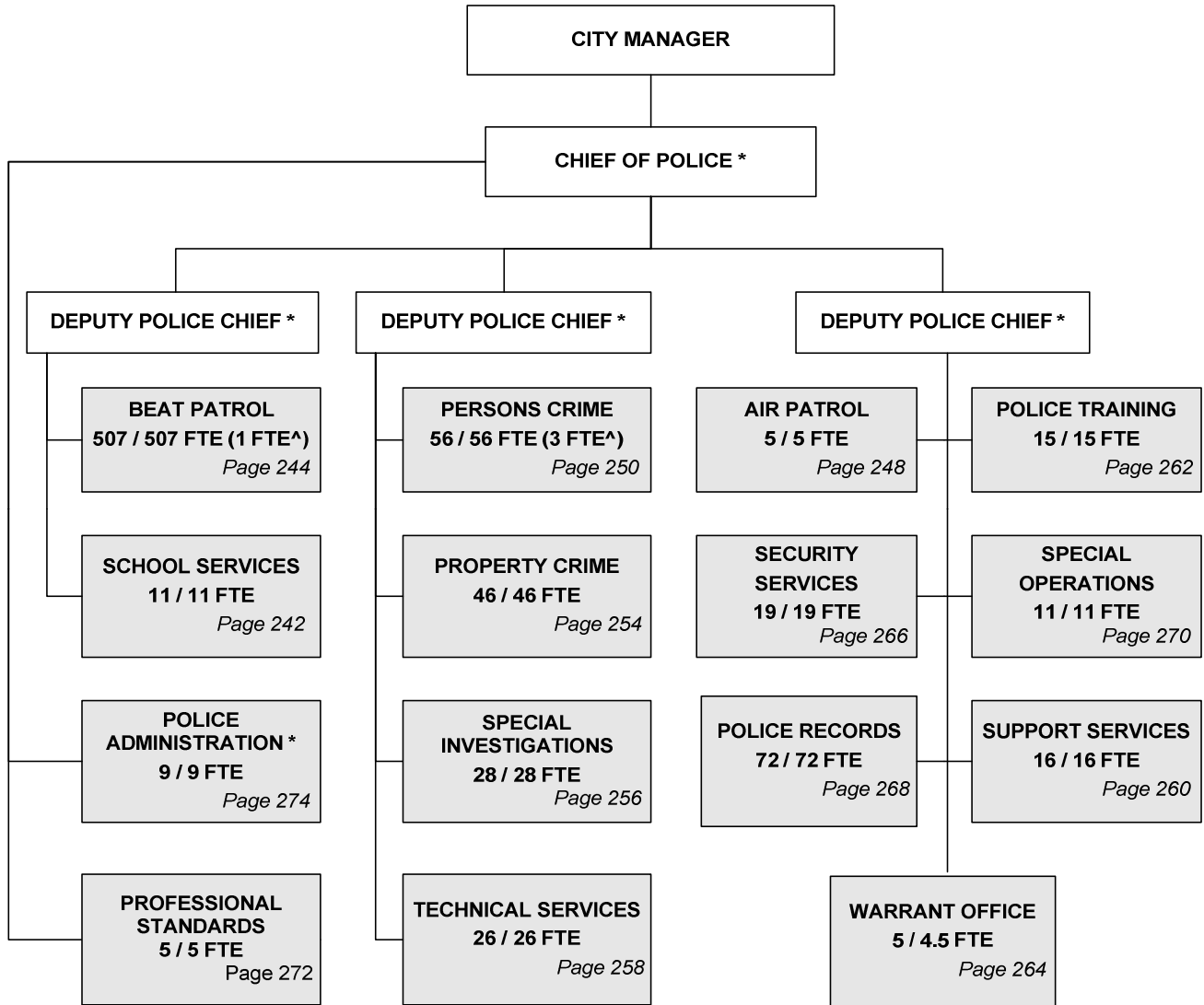


CITY OF WICHITA 2010/2011 ANNUAL BUDGET

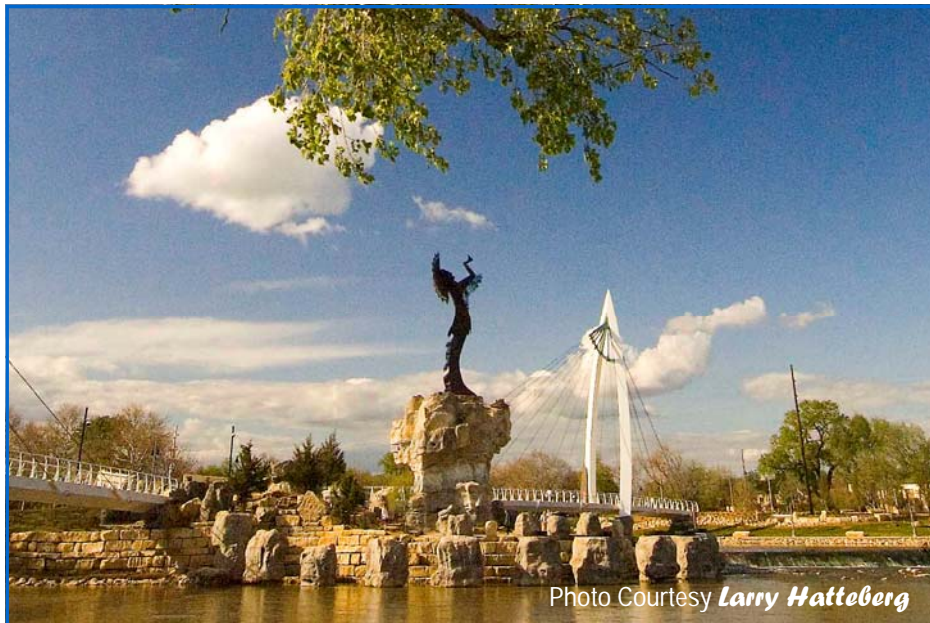
Departmental Organization Chart

POLICE



* Positions included with Police Administration
 ^ Non-locally funded positions

Total Positions/ Full-Time Equivalent = 831 / 830.5 FTE (4 FTE^)



The Keeper of the Plains sculpture raises his face toward the sky and lifts his arms in supplication to the Great Spirit.

THE KEEPER OF THE PLAINS...

A symbol of Wichita and Sedgwick County, this majestic 44-foot sculpture was designed by Blackbear Bosin (1921-1980), a Kiowa-Comanche and internationally recognized artist, muralist and designer. On May 18, 1974 a ceremony took place to dedicate the Keeper, which was designated as a Wichita Bicentennial project. The project was rededicated to the community on the 33rd anniversary of that Bicentennial project date. The 5-ton sculpture was placed at the confluence of the little and big Arkansas Rivers, which is considered a sacred site by Native Americans and was home to the Wichita tribe for many years.

A 2006 project to elevate the sculpture on a 30-foot rock promontory so it could be seen from farther away was completed and officially dedicated by Mayor Carl Brewer and the City Council on May 18, 2007.

CITY OF WICHITA 2010/2011 ANNUAL BUDGET

FUND **100 GENERAL**
DEPARTMENT **08 POLICE**

COMBINED DETAIL SUMMARY

		2008 ACTUAL	2009 ADOPTED	2009 REVISED	2010 ADOPTED	2011 APPROVED
110	Regular Salaries	43,306,216	46,776,637	46,367,182	45,993,970	46,024,438
120	Special Salaries	159,100	133,838	143,027	128,452	128,452
130	Overtime	1,645,846	786,080	796,080	796,080	796,080
140	Employee Benefits	15,264,391	16,166,221	15,754,614	17,518,291	18,190,086
150	Shrinkage	0	-1,249,876	-1,249,876	-820,312	-820,312
Subtotal Salaries and Benefits		60,375,553	62,612,900	61,811,027	63,616,480	64,318,744
210	Utilities	132,220	142,920	149,700	149,700	149,700
220	Communications	162,651	176,585	156,241	156,241	156,041
230	Transportation and Training	80,041	82,640	77,210	77,560	77,560
240	Insurance	231,250	245,530	239,421	246,870	251,870
250	Professional Services	448,654	434,380	356,126	356,726	356,726
260	Data Processing	1,304,794	1,439,965	1,406,572	1,406,572	1,406,572
270	Equipment Charges	3,985,517	4,616,640	4,577,992	3,060,648	3,060,648
280	Buildings and Grounds Charges	121,555	82,750	107,054	107,054	107,054
290	Other Contractuals	259,137	271,170	247,429	247,739	247,739
Subtotal Contractuals		6,725,820	7,492,580	7,317,745	5,809,110	5,813,910
310	Office Supplies	58,456	55,720	53,600	53,600	53,600
320	Clothing and Towels	393,130	497,930	477,630	477,630	477,630
330	Chemicals	6,901	8,500	7,400	7,400	7,400
340	Equipment Parts and Supplies	173,448	154,000	143,300	1,050,399	1,050,399
350	Materials	652	1,000	100	100	100
370	Building Parts and Materials	5,659	1,460	1,460	1,460	1,460
380	Non-capitalizable Equipment	164,209	173,970	172,500	157,900	157,400
390	Other Commodities	33,537	48,620	44,570	44,570	44,570
Subtotal Commodities		835,992	941,200	900,560	1,793,059	1,792,559
410	Land	0	0	0	0	0
420	Buildings	0	0	0	0	0
430	Improvements Other Than Bldgs.	0	0	0	0	0
440	Office Equipment	0	0	0	0	0
450	Vehicular Equipment	0	0	0	0	0
460	Operating Equipment	0	0	0	0	0
Subtotal Capital Outlay		0	0	0	0	0
510	Interfund Transfers	54,194	64,531	72,408	72,408	72,408
520	Debt Service	0	0	0	0	0
530	Other Nonoperating Expenses	0	100,000	100,000	100,000	100,000
540	Inventory Accounts	0	0	0	0	0
550	Projects Closing Entries	0	0	0	0	0
Subtotal Other		54,194	164,531	172,408	172,408	172,408
TOTAL		67,991,558	71,211,211	70,201,740	71,391,057	72,097,621

CITY OF WICHITA 2010/2011 ANNUAL BUDGET

DEPARTMENT	08 POLICE
FUND	100 GENERAL FUND
SERVICE	010202 SCHOOL SERVICES

		2008 ACTUAL	2009 ADOPTED	2009 REVISED	2010 ADOPTED	2011 APPROVED
110	Regular Salaries	1,193,801	1,246,290	1,241,027	629,444	629,912
120	Special Salaries	1,128	2,700	2,700	2,700	2,700
130	Overtime	26,994	17,500	17,500	17,500	17,500
140	Employee Benefits	462,893	493,443	478,223	268,841	282,511
150	Shrinkage	0	0	0	0	0
Subtotal Salaries and Benefits		1,684,816	1,759,933	1,739,450	918,485	932,623
210	Utilities	0	0	0	0	0
220	Communications	0	0	0	0	0
230	Transportation and Training	3,355	8,000	8,000	8,000	8,000
240	Insurance	8,040	8,040	8,040	8,040	8,040
250	Professional Services	40	0	0	0	0
260	Data Processing	0	26,630	32,212	32,212	32,212
270	Equipment Charges	0	262,080	324,720	138,590	138,590
280	Buildings and Grounds Charges	0	0	0	0	0
290	Other Contractuals	0	0	0	0	0
Subtotal Contractuals		11,435	304,750	372,972	186,842	186,842
310	Office Supplies	0	0	0	0	0
320	Clothing and Towels	0	0	0	0	0
330	Chemicals	0	0	0	0	0
340	Equipment Parts and Supplies	0	0	0	20,000	20,000
350	Materials	0	0	0	0	0
370	Building Parts and Materials	0	0	0	0	0
380	Non-capitalizable Equipment	0	0	0	0	0
390	Other Commodities	0	5,280	5,280	5,280	5,280
Subtotal Commodities		0	5,280	5,280	25,280	25,280
410	Land	0	0	0	0	0
420	Buildings	0	0	0	0	0
430	Improvements Other Than Bldgs.	0	0	0	0	0
440	Office Equipment	0	0	0	0	0
450	Vehicular Equipment	0	0	0	0	0
460	Operating Equipment	0	0	0	0	0
Subtotal Capital Outlay		0	0	0	0	0
510	Interfund Transfers	0	0	0	0	0
520	Debt Service	0	0	0	0	0
530	Other Nonoperating Expenses	0	0	0	0	0
540	Inventory Accounts	0	0	0	0	0
550	Projects Closing Entries	0	0	0	0	0
Subtotal Other		0	0	0	0	0
TOTAL		1,696,251	2,069,963	2,117,702	1,130,607	1,144,745

CITY OF WICHITA 2010/2011 ANNUAL BUDGET

DEPARTMENT	08 POLICE
FUND	100 GENERAL FUND
SERVICE	010202 SCHOOL SERVICES

POSITION TITLE	2008	2009	2010	RANGE	2009 ADOPTED	2009 REVISED	2010 ADOPTED	2011 APPROVED
Police Officer*	22	22	11	723	1,222,553	1,213,691	601,112	600,584
Subtotal	22	22	11		1,222,553	1,213,691	601,112	600,584
Other Regular Salaries					23,737	27,336	28,332	29,328
Total Regular Salaries					1,246,290	1,241,027	629,444	629,912
Total Special Salaries					2,700	2,700	2,700	2,700
TOTAL AUTHORIZED POSITIONS	22	22	11					

* Reduction in 11 Police Officer (School Resource Officer) positions

CITY OF WICHITA 2010/2011 ANNUAL BUDGET

DEPARTMENT	08 POLICE
FUND	100 GENERAL FUND
SERVICE	010301 BEAT PATROL

		2008 ACTUAL	2009 ADOPTED	2009 REVISED	2010 ADOPTED	2011 APPROVED
110	Regular Salaries	25,770,743	28,219,955	27,928,973	28,332,665	28,348,853
120	Special Salaries	43,391	21,800	38,840	38,840	38,840
130	Overtime	1,026,069	590,960	600,960	600,960	600,960
140	Employee Benefits	9,369,737	9,961,894	9,657,784	10,990,469	11,405,990
150	Shrinkage	0	-754,637	-825,876	-396,312	-396,312
Subtotal Salaries and Benefits		36,209,940	38,039,972	37,400,681	39,566,622	39,998,331
210	Utilities	35,348	40,470	47,270	47,270	47,270
220	Communications	23,673	20,455	33,570	33,570	33,570
230	Transportation and Training	310	0	0	0	0
240	Insurance	121,860	121,860	121,190	121,190	121,190
250	Professional Services	171	40	30	30	30
260	Data Processing	586,296	684,486	624,972	624,972	624,972
270	Equipment Charges	3,546,209	3,781,490	3,717,040	2,477,511	2,477,511
280	Buildings and Grounds Charges	95,141	58,620	82,964	82,964	82,964
290	Other Contractuals	43,262	45,760	46,154	46,154	46,154
Subtotal Contractuals		4,452,270	4,753,181	4,673,190	3,433,661	3,433,661
310	Office Supplies	10,240	11,250	10,650	10,650	10,650
320	Clothing and Towels	0	500	0	0	0
330	Chemicals	6,516	6,700	6,700	6,700	6,700
340	Equipment Parts and Supplies	4,015	2,750	250	797,138	797,138
350	Materials	479	0	0	0	0
370	Building Parts and Materials	1,417	1,460	1,460	1,460	1,460
380	Non-capitalizable Equipment	4,701	7,870	4,550	4,450	3,950
390	Other Commodities	5,843	13,690	13,790	13,790	13,790
Subtotal Commodities		33,212	44,220	37,400	834,188	833,688
410	Land	0	0	0	0	0
420	Buildings	0	0	0	0	0
430	Improvements Other Than Bldgs.	0	0	0	0	0
440	Office Equipment	0	0	0	0	0
450	Vehicular Equipment	0	0	0	0	0
460	Operating Equipment	0	0	0	0	0
Subtotal Capital Outlay		0	0	0	0	0
510	Interfund Transfers	0	0	0	0	0
520	Debt Service	0	0	0	0	0
530	Other Nonoperating Expenses	0	0	0	0	0
540	Inventory Accounts	0	0	0	0	0
550	Projects Closing Entries	0	0	0	0	0
Subtotal Other		0	0	0	0	0
TOTAL		40,695,422	42,837,373	42,111,271	43,834,471	44,265,680

CITY OF WICHITA 2010/2011 ANNUAL BUDGET

DEPARTMENT	08 POLICE
FUND	100 GENERAL FUND
SERVICE	010301 BEAT PATROL

POSITION TITLE	2008	2009	2010	RANGE	2009 ADOPTED	2009 REVISED	2010 ADOPTED	2011 APPROVED
Police Captain	4	4	4	D61	314,225	325,415	325,415	325,415
Police Lieutenant	16	16	16	727	1,256,722	1,264,075	1,287,839	1,287,839
Police Sergeant	52	52	52	725	3,834,672	3,764,686	3,838,042	3,838,042
Police Officer	408	408	408	723	20,709,527	20,566,442	20,885,816	20,885,816
Station Clerk**	4	4	3	710	176,145	151,268	122,220	122,220
Service Officer I	8	8	8	620	317,218	317,726	321,564	321,564
Secretary	4	4	4	619	145,685	144,770	146,762	146,762
Customer Service Clerk I	4	4	4	617	129,186	129,064	130,591	130,591
Clerk III**	10	10	7	617	288,006	284,655	202,875	202,875
Subtotal	510	510	506		27,171,386	26,948,101	27,261,123	27,261,123
Savings from scheduled position hold*					0	(74,480)	0	0
Other Regular Salaries					1,048,569	1,055,352	1,071,542	1,087,730
Total Regular Salaries					28,219,955	27,928,973	28,332,665	28,348,853
Total Special Salaries					21,800	38,840	38,840	38,840
TOTAL AUTHORIZED POSITIONS	510	510	506					

* One Police Lieutenant position is being held open in 2009.
 ** Reduction based on reducing operating hours of four substations.

CITY OF WICHITA 2010/2011 ANNUAL BUDGET

DEPARTMENT	08 POLICE
FUND	290 FEDERAL GRANTS
SERVICE	010301 BEAT PATROL

		2008 ACTUAL	2009 ADOPTED	2009 REVISED	2010 ADOPTED	2011 APPROVED
110	Regular Salaries	46,525	49,121	49,158	49,390	49,390
120	Special Salaries	0	0	0	0	0
130	Overtime	0	0	0	0	0
140	Employee Benefits	20,172	21,481	20,462	13,868	14,935
150	Shrinkage	0	0	0	0	0
Subtotal Salaries and Benefits		66,697	70,602	69,620	63,258	64,325
210	Utilities	0	0	0	0	0
220	Communications	0	0	0	0	0
230	Transportation and Training	0	0	0	0	0
240	Insurance	0	0	0	0	0
250	Professional Services	0	0	0	0	0
260	Data Processing	0	0	0	0	0
270	Equipment Charges	9,841	11,250	11,250	10,250	10,250
280	Buildings and Grounds Charges	0	0	0	0	0
290	Other Contractuals	0	0	0	0	0
Subtotal Contractuals		9,841	11,250	11,250	10,250	10,250
310	Office Supplies	0	0	0	0	0
320	Clothing and Towels	0	0	0	0	0
330	Chemicals	0	0	0	0	0
340	Equipment Parts and Supplies	868	0	0	0	0
350	Materials	0	0	0	0	0
370	Building Parts and Materials	0	0	0	0	0
380	Non-capitalizable Equipment	0	0	0	0	0
390	Other Commodities	0	0	0	0	0
Subtotal Commodities		868	0	0	0	0
410	Land	0	0	0	0	0
420	Buildings	0	0	0	0	0
430	Improvements Other Than Bldgs.	0	0	0	0	0
440	Office Equipment	0	0	0	0	0
450	Vehicular Equipment	0	0	0	0	0
460	Operating Equipment	0	0	0	0	0
Subtotal Capital Outlay		0	0	0	0	0
510	Interfund Transfers	0	0	0	0	0
520	Debt Service	0	0	0	0	0
530	Other Nonoperating Expenses	0	0	0	0	0
540	Inventory Accounts	0	0	0	0	0
550	Projects Closing Entries	0	0	0	0	0
Subtotal Other		0	0	0	0	0
TOTAL		77,406	81,852	80,870	73,508	74,575

CITY OF WICHITA 2010/2011 ANNUAL BUDGET

DEPARTMENT 08 POLICE
FUND 290 FEDERAL GRANTS
SERVICE 010301 BEAT PATROL

POSITION TITLE	2008	2009	2010	RANGE	2009 ADOPTED	2009 REVISED	2010 ADOPTED	2011 APPROVED
Police Officer	1	1	1	723	49,121	49,158	49,390	49,390
Total Regular Salaries	1	1	1		49,121	49,158	49,390	49,390
TOTAL AUTHORIZED POSITIONS	1	1	1					

CITY OF WICHITA 2010/2011 ANNUAL BUDGET

DEPARTMENT	08 POLICE
FUND	100 GENERAL FUND
SERVICE	010302 AIR PATROL

		2008 ACTUAL	2009 ADOPTED	2009 REVISED	2010 ADOPTED	2011 APPROVED
110	Regular Salaries	325,089	338,419	342,204	349,070	349,310
120	Special Salaries	1,650	750	750	750	750
130	Overtime	6,829	0	0	0	0
140	Employee Benefits	99,002	109,304	99,466	114,914	118,330
150	Shrinkage	0	-13,756	0	0	0
Subtotal Salaries and Benefits		432,570	434,717	442,420	464,733	468,389
210	Utilities	12,521	12,000	12,520	12,520	12,520
220	Communications	2,005	2,630	2,572	2,572	2,572
230	Transportation and Training	14,812	14,200	14,200	14,200	14,200
240	Insurance	35,720	50,000	42,551	50,000	55,000
250	Professional Services	356	220	220	220	220
260	Data Processing	6,012	6,565	5,988	5,988	5,988
270	Equipment Charges	31,343	47,950	47,500	47,500	47,500
280	Buildings and Grounds Charges	505	240	240	240	240
290	Other Contractuals	842	2,560	360	360	360
Subtotal Contractuals		104,116	136,365	126,151	133,600	138,600
310	Office Supplies	398	400	400	400	400
320	Clothing and Towels	0	0	0	0	0
330	Chemicals	0	0	0	0	0
340	Equipment Parts and Supplies	136,601	125,000	110,000	110,041	110,041
350	Materials	0	0	0	0	0
370	Building Parts and Materials	0	0	0	0	0
380	Non-capitalizable Equipment	0	0	0	0	0
390	Other Commodities	986	450	200	200	200
Subtotal Commodities		137,986	125,850	110,600	110,641	110,641
410	Land	0	0	0	0	0
420	Buildings	0	0	0	0	0
430	Improvements Other Than Bldgs.	0	0	0	0	0
440	Office Equipment	0	0	0	0	0
450	Vehicular Equipment	0	0	0	0	0
460	Operating Equipment	0	0	0	0	0
Subtotal Capital Outlay		0	0	0	0	0
510	Interfund Transfers	50,000	50,000	50,000	50,000	50,000
520	Debt Service	0	0	0	0	0
530	Other Nonoperating Expenses	0	0	0	0	0
540	Inventory Accounts	0	0	0	0	0
550	Projects Closing Entries	0	0	0	0	0
Subtotal Other		50,000	50,000	50,000	50,000	50,000
TOTAL		724,671	746,932	729,171	758,974	767,630

CITY OF WICHITA 2010/2011 ANNUAL BUDGET

DEPARTMENT	08 POLICE
FUND	100 GENERAL FUND
SERVICE	010302 AIR PATROL

POSITION TITLE	2008	2009	2010	RANGE	2009 ADOPTED	2009 REVISED	2010 ADOPTED	2011 APPROVED
Police Lieutenant	1	1	1	727	79,757	79,763	81,600	81,600
Police Sergeant	1	1	1	725	75,502	75,508	77,247	77,247
Police Officer	2	2	2	723	113,327	113,387	116,056	116,056
Helicopter Mechanic	1	1	1	627	52,941	57,466	57,846	57,846
Subtotal	5	5	5		321,527	326,124	332,750	332,750
Other Regular Salaries					16,892	16,080	16,320	16,560
Total Regular Salaries					338,419	342,204	349,070	349,310
Total Special Salaries					750	750	750	750
TOTAL AUTHORIZED POSITIONS	5	5	5					

CITY OF WICHITA 2010/2011 ANNUAL BUDGET

DEPARTMENT	08 POLICE
FUND	100 GENERAL FUND
SERVICE	010401 PERSONS CRIME INVESTIGATION

		2008 ACTUAL	2009 ADOPTED	2009 REVISED	2010 ADOPTED	2011 APPROVED
110	Regular Salaries	3,154,601	3,377,427	3,296,581	3,342,615	3,345,495
120	Special Salaries	27,665	24,000	29,980	29,980	29,980
130	Overtime	274,455	116,070	116,070	116,070	116,070
140	Employee Benefits	1,186,182	1,209,206	1,161,026	1,324,343	1,375,722
150	Shrinkage	0	-91,350	-91,000	-91,000	-91,000
Subtotal Salaries and Benefits		4,642,903	4,635,353	4,512,657	4,722,008	4,776,267
210	Utilities	0	0	0	0	0
220	Communications	15,697	14,720	15,872	15,872	15,672
230	Transportation and Training	1,080	1,800	1,000	1,000	1,000
240	Insurance	15,410	15,410	12,730	12,730	12,730
250	Professional Services	39,670	45,000	45,000	45,000	45,000
260	Data Processing	111,798	114,631	132,108	132,108	132,108
270	Equipment Charges	121,287	121,180	129,316	124,191	124,191
280	Buildings and Grounds Charges	0	0	0	0	0
290	Other Contractuals	12,957	11,260	12,075	12,075	12,075
Subtotal Contractuals		317,900	324,001	348,101	342,976	342,776
310	Office Supplies	2,648	3,100	2,700	2,700	2,700
320	Clothing and Towels	0	0	0	0	0
330	Chemicals	0	0	200	200	200
340	Equipment Parts and Supplies	1,480	4,500	3,000	25,097	25,097
350	Materials	8	0	0	0	0
370	Building Parts and Materials	0	0	0	0	0
380	Non-capitalizable Equipment	882	2,000	1,100	1,100	1,100
390	Other Commodities	678	1,300	1,300	1,300	1,300
Subtotal Commodities		5,695	10,900	8,300	30,397	30,397
410	Land	0	0	0	0	0
420	Buildings	0	0	0	0	0
430	Improvements Other Than Bldgs.	0	0	0	0	0
440	Office Equipment	0	0	0	0	0
450	Vehicular Equipment	0	0	0	0	0
460	Operating Equipment	0	0	0	0	0
Subtotal Capital Outlay		0	0	0	0	0
510	Interfund Transfers	4,194	14,531	22,408	22,408	22,408
520	Debt Service	0	0	0	0	0
530	Other Nonoperating Expenses	0	0	0	0	0
540	Inventory Accounts	0	0	0	0	0
550	Projects Closing Entries	0	0	0	0	0
Subtotal Other		4,194	14,531	22,408	22,408	22,408
TOTAL		4,970,692	4,984,785	4,891,466	5,117,789	5,171,848

CITY OF WICHITA 2010/2011 ANNUAL BUDGET

DEPARTMENT	08 POLICE
FUND	100 GENERAL FUND
SERVICE	010401 PERSONS CRIME INVESTIGATION

POSITION TITLE	2008	2009	2010	RANGE	2009 ADOPTED	2009 REVISED	2010 ADOPTED	2011 APPROVED
Police Captain	1	1	1	D61	87,278	81,386	81,386	81,386
Police Lieutenant	5	5	5	727	398,786	387,833	396,766	396,766
Police Sergeant	1	1	1	725	75,502	75,508	77,247	77,247
Police Detective	37	37	37	724	2,269,889	2,226,992	2,253,545	2,253,545
Police Officer	6	6	6	723	319,159	301,799	305,441	305,441
Clerk II	3	3	3	615	97,571	97,640	99,926	99,926
Subtotal	53	53	53		3,248,186	3,171,157	3,214,311	3,214,311
Other Regular Salaries					129,241	125,424	128,304	131,184
Total Regular Salaries					3,377,427	3,296,581	3,342,615	3,345,495
Total Special Salaries					24,000	29,980	29,980	29,980
TOTAL AUTHORIZED POSITIONS	53	53	53					

CITY OF WICHITA 2010/2011 ANNUAL BUDGET

DEPARTMENT	08 POLICE
FUND	290 GRANT FUNDS
SERVICE	0104011 PERSONS CRIME INVESTIGATION

		2008 ACTUAL	2009 ADOPTED	2009 REVISED	2010 ADOPTED	2011 APPROVED
110	Regular Salaries	110,667	169,719	179,205	179,205	179,205
120	Special Salaries	2,160	0	0	0	0
130	Overtime	6,221	0	0	0	0
140	Employee Benefits	29,518	56,136	58,307	63,064	65,198
150	Shrinkage	0	0	0	0	0
	Subtotal Salaries and Benefits	148,567	225,855	237,512	242,269	244,403
210	Utilities	0	0	0	0	0
220	Communications	849	1,174	1,174	1,174	1,174
230	Transportation and Training	0	3,200	3,200	3,200	3,200
240	Insurance	0	0	0	0	0
250	Professional Services	0	0	0	0	0
260	Data Processing	0	2,616	2,616	2,616	2,616
270	Equipment Charges	0	0	0	0	0
280	Buildings and Grounds Charges	0	0	0	0	0
290	Other Contractuals	1,977	1,700	1,700	1,700	1,700
	Subtotal Contractuals	2,826	8,690	8,690	8,690	8,690
310	Office Supplies	0	1,250	1,250	1,250	1,250
320	Clothing and Towels	0	0	0	0	0
330	Chemicals	0	0	0	0	0
340	Equipment Parts and Supplies	0	0	0	0	0
350	Materials	0	0	0	0	0
370	Building Parts and Materials	0	0	0	0	0
380	Non-capitalizable Equipment	0	0	0	0	0
390	Other Commodities	0	5,000	5,000	5,000	5,000
	Subtotal Commodities	0	6,250	6,250	6,250	6,250
410	Land	0	0	0	0	0
420	Buildings	0	0	0	0	0
430	Improvements Other Than Bldgs.	0	0	0	0	0
440	Office Equipment	0	0	0	0	0
450	Vehicular Equipment	0	0	0	0	0
460	Operating Equipment	0	0	0	0	0
	Subtotal Capital Outlay	0	0	0	0	0
510	Interfund Transfers	0	0	0	0	0
520	Debt Service	0	0	0	0	0
530	Other Nonoperating Expenses	0	0	0	0	0
540	Inventory Accounts	0	0	0	0	0
550	Projects Closing Entries	0	0	0	0	0
	Subtotal Other	0	0	0	0	0
	TOTAL	151,393	240,795	252,452	257,209	259,343

CITY OF WICHITA 2010/2011 ANNUAL BUDGET

DEPARTMENT 08 POLICE
FUND 290 GRANT FUNDS
SERVICE 010401 PERSONS CRIME INVESTIGATION

POSITION TITLE	2008	2009	2010	RANGE	2009 ADOPTED	2009 REVISED	2010 ADOPTED	2011 APPROVED
Program Specialist - VOCA	1	1	1	C41	50,207	50,207	50,207	50,207
Police Detective - ICAC Program	1	1	1	724	64,499	64,499	64,499	64,499
Police Detective - Safe Streets	1	1	1	724	64,499	64,499	64,499	64,499
Subtotal	3	3	3		179,205	179,205	179,205	179,205
Other Regular Salaries					0	0	0	0
Total Regular Salaries					179,205	179,205	179,205	179,205

CITY OF WICHITA 2010/2011 ANNUAL BUDGET

DEPARTMENT	08 POLICE
FUND	100 GENERAL FUND
SERVICE	010402 PROPERTY CRIME INVESTIGATION

		2008 ACTUAL	2009 ADOPTED	2009 REVISED	2010 ADOPTED	2011 APPROVED
110	Regular Salaries	3,033,771	3,248,302	3,173,004	3,027,282	3,029,826
120	Special Salaries	18,838	11,080	18,460	18,460	18,460
130	Overtime	68,112	0	0	0	0
140	Employee Benefits	1,016,150	1,073,324	1,055,667	1,145,178	1,185,675
150	Shrinkage	0	-83,125	-83,000	-83,000	-83,000
Subtotal Salaries and Benefits		4,136,871	4,249,581	4,164,131	4,107,920	4,150,962
210	Utilities	421	0	0	0	0
220	Communications	24,057	24,880	24,805	24,805	24,805
230	Transportation and Training	1,153	0	0	0	0
240	Insurance	15,410	15,410	14,740	14,740	14,740
250	Professional Services	0	0	0	0	0
260	Data Processing	134,688	130,079	131,580	131,580	131,580
270	Equipment Charges	91,798	124,930	105,066	81,304	81,304
280	Buildings and Grounds Charges	0	0	0	0	0
290	Other Contractuals	16,258	15,550	15,550	15,550	15,550
Subtotal Contractuals		283,786	310,849	291,741	267,979	267,979
310	Office Supplies	2,918	3,200	3,000	3,000	3,000
320	Clothing and Towels	0	0	0	0	0
330	Chemicals	0	0	0	0	0
340	Equipment Parts and Supplies	471	0	0	20,424	20,424
350	Materials	14	0	0	0	0
370	Building Parts and Materials	0	0	0	0	0
380	Non-capitalizable Equipment	0	1,220	500	500	500
390	Other Commodities	969	600	600	600	600
Subtotal Commodities		4,373	5,020	4,100	24,524	24,524
410	Land	0	0	0	0	0
420	Buildings	0	0	0	0	0
430	Improvements Other Than Bldgs.	0	0	0	0	0
440	Office Equipment	0	0	0	0	0
450	Vehicular Equipment	0	0	0	0	0
460	Operating Equipment	0	0	0	0	0
Subtotal Capital Outlay		0	0	0	0	0
510	Interfund Transfers	0	0	0	0	0
520	Debt Service	0	0	0	0	0
530	Other Nonoperating Expenses	0	0	0	0	0
540	Inventory Accounts	0	0	0	0	0
550	Projects Closing Entries	0	0	0	0	0
Subtotal Other		0	0	0	0	0
TOTAL		4,425,030	4,565,450	4,459,972	4,400,423	4,443,465

CITY OF WICHITA 2010/2011 ANNUAL BUDGET

DEPARTMENT	08 POLICE
FUND	100 GENERAL FUND
SERVICE	010402 PROPERTY CRIME INVESTIGATION

POSITION TITLE	2008	2009	2010	RANGE	2009 ADOPTED	2009 REVISED	2010 ADOPTED	2011 APPROVED
Police Captain	1	1	1	D61	85,608	89,032	89,032	89,032
Police Lieutenant	5	5	5	727	398,786	397,468	406,012	406,012
Police Detective	36	36	36	724	2,295,935	2,354,893	2,323,317	2,323,317
Police Officer*	4	4	0	723	239,947	122,016	0	0
Service Officer II	1	1	1	623	48,744	34,896	35,360	35,360
Clerk II	3	3	3	615	90,553	88,778	89,464	89,464
Subtotal	50	50	46		3,159,573	3,087,084	2,943,186	2,943,186
Other Regular Salaries					88,729	85,920	84,096	86,640
Total Regular Salaries					3,248,302	3,173,004	3,027,282	3,029,826
Total Special Salaries					11,080	18,460	18,460	18,460
TOTAL AUTHORIZED POSITIONS	50	50	46					

* Four Police Officer "rotator" positions are eliminated in 2010.

CITY OF WICHITA 2010/2011 ANNUAL BUDGET

DEPARTMENT	08 POLICE
FUND	100 GENERAL FUND
SERVICE	010403 SPECIAL INVESTIGATIONS

		2008 ACTUAL	2009 ADOPTED	2009 REVISED	2010 ADOPTED	2011 APPROVED
110	Regular Salaries	1,731,015	1,825,371	1,832,192	1,858,023	1,859,703
120	Special Salaries	10,535	10,000	10,000	10,000	10,000
130	Overtime	35,280	37,050	38,050	38,050	38,050
140	Employee Benefits	579,931	592,529	608,548	695,791	720,780
150	Shrinkage	0	-46,354	-46,000	-46,000	-46,000
Subtotal Salaries and Benefits		2,356,760	2,418,596	2,442,790	2,555,864	2,582,533
210	Utilities	5,482	4,350	5,750	5,750	5,750
220	Communications	17,626	19,720	13,740	13,740	13,740
230	Transportation and Training	1,872	1,900	1,900	1,900	1,900
240	Insurance	0	0	0	0	0
250	Professional Services	2,964	13,640	2,840	2,840	2,840
260	Data Processing	64,704	65,203	76,452	76,452	76,452
270	Equipment Charges	2,884	500	5,640	0	0
280	Buildings and Grounds Charges	0	0	0	0	0
290	Other Contractuals	10,955	10,410	10,410	10,410	10,410
Subtotal Contractuals		106,487	115,723	116,732	111,092	111,092
310	Office Supplies	3,030	2,600	2,600	2,600	2,600
320	Clothing and Towels	3	0	0	0	0
330	Chemicals	385	1,800	500	500	500
340	Equipment Parts and Supplies	274	0	0	797	797
350	Materials	0	0	0	0	0
370	Building Parts and Materials	0	0	0	0	0
380	Non-capitalizable Equipment	2,896	3,100	2,100	2,100	2,100
390	Other Commodities	1,245	1,000	1,000	1,000	1,000
Subtotal Commodities		7,833	8,500	6,200	6,997	6,997
410	Land	0	0	0	0	0
420	Buildings	0	0	0	0	0
430	Improvements Other Than Bldgs.	0	0	0	0	0
440	Office Equipment	0	0	0	0	0
450	Vehicular Equipment	0	0	0	0	0
460	Operating Equipment	0	0	0	0	0
Subtotal Capital Outlay		0	0	0	0	0
510	Interfund Transfers	0	0	0	0	0
520	Debt Service	0	0	0	0	0
530	Other Nonoperating Expenses	0	0	0	0	0
540	Inventory Accounts	0	0	0	0	0
550	Projects Closing Entries	0	0	0	0	0
Subtotal Other		0	0	0	0	0
TOTAL		2,471,080	2,542,819	2,565,722	2,673,953	2,700,622

CITY OF WICHITA 2010/2011 ANNUAL BUDGET

DEPARTMENT	08 POLICE
FUND	100 GENERAL FUND
SERVICE	010403 SPECIAL INVESTIGATIONS

POSITION TITLE	2008	2009	2010	RANGE	2009 ADOPTED	2009 REVISED	2010 ADOPTED	2011 APPROVED
Police Captain	1	1	1	D61	79,085	82,249	82,249	82,249
Police Lieutenant	2	2	2	727	159,515	159,527	163,201	163,201
Police Sergeant	1	1	1	725	75,502	72,697	73,525	73,525
Police Detective*	21	21	21	724	1,327,679	1,334,974	1,353,091	1,353,091
Secretary	1	1	1	619	34,102	34,106	34,858	34,858
Clerk II	2	2	2	615	67,610	68,520	69,300	69,300
Subtotal	28	28	28		1,743,492	1,752,072	1,776,223	1,776,223
Other Regular Salaries					81,879	80,120	81,800	83,480
Total Regular Salaries					1,825,371	1,832,192	1,858,023	1,859,703
Total Special Salaries					10,000	10,000	10,000	10,000
TOTAL AUTHORIZED POSITIONS	28	28	28					

CITY OF WICHITA 2010/2011 ANNUAL BUDGET

DEPARTMENT	08 POLICE
FUND	100 GENERAL FUND
SERVICE	010404 TECHNICAL SERVICES

		2008 ACTUAL	2009 ADOPTED	2009 REVISED	2010 ADOPTED	2011 APPROVED
110	Regular Salaries	1,131,081	1,228,221	1,233,034	1,248,102	1,249,038
120	Special Salaries	1,800	0	600	600	600
130	Overtime	19,996	24,500	23,500	23,500	23,500
140	Employee Benefits	330,766	352,707	354,191	408,053	424,592
150	Shrinkage	0	-33,766	-34,000	-34,000	-34,000
Subtotal Salaries and Benefits		1,483,643	1,571,662	1,577,325	1,646,255	1,663,730
210	Utilities	30,323	29,200	32,150	32,150	32,150
220	Communications	20,499	24,240	3,726	3,726	3,726
230	Transportation and Training	3,142	2,400	1,200	1,200	1,200
240	Insurance	15,440	15,440	15,440	15,440	15,440
250	Professional Services	5,427	5,540	7,170	7,770	7,770
260	Data Processing	45,588	46,726	46,752	46,752	46,752
270	Equipment Charges	32,284	105,700	42,230	37,953	37,953
280	Buildings and Grounds Charges	5,978	1,320	1,800	1,800	1,800
290	Other Contractuals	7,939	8,520	8,520	8,520	8,520
Subtotal Contractuals		166,620	239,086	158,988	155,311	155,311
310	Office Supplies	6,456	6,000	6,000	6,000	6,000
320	Clothing and Towels	0	0	0	0	0
330	Chemicals	0	0	0	0	0
340	Equipment Parts and Supplies	457	0	0	10,876	10,876
350	Materials	0	0	0	0	0
370	Building Parts and Materials	31	0	0	0	0
380	Non-capitalizable Equipment	33,105	34,000	36,000	22,000	22,000
390	Other Commodities	300	900	900	900	900
Subtotal Commodities		40,348	40,900	42,900	39,776	39,776
410	Land	0	0	0	0	0
420	Buildings	0	0	0	0	0
430	Improvements Other Than Bldgs.	0	0	0	0	0
440	Office Equipment	0	0	0	0	0
450	Vehicular Equipment	0	0	0	0	0
460	Operating Equipment	0	0	0	0	0
Subtotal Capital Outlay		0	0	0	0	0
510	Interfund Transfers	0	0	0	0	0
520	Debt Service	0	0	0	0	0
530	Other Nonoperating Expenses	0	0	0	0	0
540	Inventory Accounts	0	0	0	0	0
550	Projects Closing Entries	0	0	0	0	0
Subtotal Other		0	0	0	0	0
TOTAL		1,690,611	1,851,648	1,779,213	1,841,342	1,858,817

CITY OF WICHITA 2010/2011 ANNUAL BUDGET

DEPARTMENT	08 POLICE
FUND	100 GENERAL FUND
SERVICE	010404 TECHNICAL SERVICES

POSITION TITLE	2008	2009	2010	RANGE	2009 ADOPTED	2009 REVISED	2010 ADOPTED	2011 APPROVED
Police Captain	1	1	1	D61	72,800	82,319	82,319	82,319
Section Supervisor	1	1	1	C41	56,359	58,613	58,613	58,613
Forensic Examiner	1	1	1	929	61,322	65,370	65,370	65,370
Police Detective	1	1	1	724	64,499	64,561	66,112	66,112
Crime Scene Investigator	11	11	11	714	525,566	508,887	515,814	515,814
Crime Scene Supervisor	2	2	2	626	98,784	101,957	103,016	103,016
Property Clerk	1	1	1	621	46,505	45,412	45,455	45,455
Service Officer I	4	4	4	620	149,834	150,369	152,383	152,383
Photographer	1	1	1	619	40,424	40,619	41,435	41,435
Photo Technician	1	1	1	617	28,395	28,405	28,838	28,838
Clerk II	2	2	2	615	56,017	56,021	57,312	57,312
Subtotal	26	26	26		1,200,506	1,202,534	1,216,666	1,216,666
Other Regular Salaries					27,715	30,500	31,436	32,372
Total Regular Salaries					1,228,221	1,233,034	1,248,102	1,249,038
Total Special Salaries					0	600	600	600
TOTAL AUTHORIZED POSITIONS	26	26	26					

CITY OF WICHITA 2010/2011 ANNUAL BUDGET

DEPARTMENT	08 POLICE
FUND	100 GENERAL FUND
SERVICE	010501 POLICE SUPPORT SERVICES

		2008 ACTUAL	2009 ADOPTED	2009 REVISED	2010 ADOPTED	2011 APPROVED
110	Regular Salaries	1,084,110	1,130,737	1,152,705	983,502	984,294
120	Special Salaries	1,698	2,000	2,100	2,100	2,100
130	Overtime	10,185	0	0	0	0
140	Employee Benefits	361,029	376,174	365,665	339,675	352,482
150	Shrinkage	0	-36,780	-36,000	-36,000	-36,000
Subtotal Salaries and Benefits		1,457,022	1,472,131	1,484,470	1,289,277	1,302,876
210	Utilities	0	0	0	0	0
220	Communications	9,911	10,920	5,804	5,804	5,804
230	Transportation and Training	6,343	6,900	800	800	800
240	Insurance	6,700	6,700	8,040	8,040	8,040
250	Professional Services	304,969	271,060	185,122	185,122	185,122
260	Data Processing	74,208	73,130	71,652	71,652	71,652
270	Equipment Charges	45,571	45,100	56,840	38,417	38,417
280	Buildings and Grounds Charges	0	0	0	0	0
290	Other Contractuals	15,411	15,100	15,150	15,150	15,150
Subtotal Contractuals		463,113	428,910	343,408	324,985	324,985
310	Office Supplies	15,346	9,200	9,100	9,100	9,100
320	Clothing and Towels	0	0	0	0	0
330	Chemicals	0	0	0	0	0
340	Equipment Parts and Supplies	519	0	0	9,025	9,025
350	Materials	0	0	0	0	0
370	Building Parts and Materials	90	0	0	0	0
380	Non-capitalizable Equipment	3,229	1,880	1,800	1,800	1,800
390	Other Commodities	8,966	11,200	11,000	11,000	11,000
Subtotal Commodities		28,152	22,280	21,900	30,925	30,925
410	Land	0	0	0	0	0
420	Buildings	0	0	0	0	0
430	Improvements Other Than Bldgs.	0	0	0	0	0
440	Office Equipment	0	0	0	0	0
450	Vehicular Equipment	0	0	0	0	0
460	Operating Equipment	0	0	0	0	0
Subtotal Capital Outlay		0	0	0	0	0
510	Interfund Transfers	0	0	0	0	0
520	Debt Service	0	0	0	0	0
530	Other Nonoperating Expenses	0	100,000	100,000	100,000	100,000
540	Inventory Accounts	0	0	0	0	0
550	Projects Closing Entries	0	0	0	0	0
Subtotal Other		0	100,000	100,000	100,000	100,000
TOTAL		1,948,286	2,023,321	1,949,778	1,745,187	1,758,786

CITY OF WICHITA 2010/2011 ANNUAL BUDGET

DEPARTMENT	08 POLICE
FUND	100 GENERAL FUND
SERVICE	010501 POLICE SUPPORT SERVICES

POSITION TITLE	2008	2009	2010	RANGE	2009 ADOPTED	2009 REVISED	2010 ADOPTED	2011 APPROVED
Police Captain	1	1	1	D61	81,583	90,769	90,769	90,769
Section Supervisor	1	1	1	C41	43,996	45,756	45,756	45,756
Fiscal Analyst	1	1	1	C41	53,797	58,760	58,760	58,760
Planning Analyst	1	1	1	927	54,264	59,292	59,292	59,292
Administrative Aide III	1	1	1	926	56,425	57,781	57,835	57,835
Police Lieutenant	1	1	1	727	79,757	79,763	81,600	81,600
Police Officer*	8	8	5	723	431,766	433,341	260,754	260,754
Administrative Aide II	1	1	1	623	48,744	49,307	49,963	49,963
Associate Accountant	1	1	1	623	48,744	49,307	49,963	49,963
Account Clerk III	2	2	2	621	88,170	88,235	89,800	89,800
Administrative Aide I	3	3	3	620	118,453	118,087	119,090	119,090
Subtotal	21	21	18		1,105,700	1,130,397	963,583	963,583
Other Regular Salaries					25,037	22,308	19,919	20,711
Total Regular Salaries					1,130,737	1,152,705	983,502	984,294
Total Special Salaries					2,000	2,100	2,100	2,100
TOTAL AUTHORIZED POSITIONS	21	21	18					

* The 2010 Adopted Budget eliminates three Police Officer positions.

CITY OF WICHITA 2010/2011 ANNUAL BUDGET

DEPARTMENT	08 POLICE
FUND	100 GENERAL FUND
SERVICE	010502 POLICE TRAINING

		2008 ACTUAL	2009 ADOPTED	2009 REVISED	2010 ADOPTED	2011 APPROVED
110	Regular Salaries	940,642	989,935	915,579	933,550	934,414
120	Special Salaries	3,256	2,720	3,460	3,460	3,460
130	Overtime	4,878	0	0	0	0
140	Employee Benefits	313,941	319,824	322,689	348,257	361,840
150	Shrinkage	0	-37,071	-37,000	-37,000	-37,000
Subtotal Salaries and Benefits		1,262,717	1,275,408	1,204,728	1,248,267	1,262,714
210	Utilities	41,757	49,700	44,550	44,550	44,550
220	Communications	1,121	3,000	1,500	1,500	1,500
230	Transportation and Training	4,718	6,400	13,900	13,900	13,900
240	Insurance	4,180	4,180	4,180	4,180	4,180
250	Professional Services	13,201	13,700	17,700	17,700	17,700
260	Data Processing	39,990	39,279	38,940	38,940	38,940
270	Equipment Charges	18,927	21,010	19,410	17,945	17,945
280	Buildings and Grounds Charges	16,929	21,450	20,930	20,930	20,930
290	Other Contractuals	21,947	16,620	16,800	17,110	17,110
Subtotal Contractuals		162,770	175,339	177,910	176,755	176,755
310	Office Supplies	5,006	4,000	4,000	4,000	4,000
320	Clothing and Towels	393,127	490,000	472,000	472,000	472,000
330	Chemicals	0	0	0	0	0
340	Equipment Parts and Supplies	3,821	3,600	2,900	7,339	7,339
350	Materials	11	0	0	0	0
370	Building Parts and Materials	0	0	0	0	0
380	Non-capitalizable Equipment	96,473	111,750	111,000	110,500	110,500
390	Other Commodities	7,424	9,100	7,250	7,250	7,250
Subtotal Commodities		505,862	618,450	597,150	601,089	601,089
410	Land	0	0	0	0	0
420	Buildings	0	0	0	0	0
430	Improvements Other Than Bldgs.	0	0	0	0	0
440	Office Equipment	0	0	0	0	0
450	Vehicular Equipment	0	0	0	0	0
460	Operating Equipment	0	0	0	0	0
Subtotal Capital Outlay		0	0	0	0	0
510	Interfund Transfers	0	0	0	0	0
520	Debt Service	0	0	0	0	0
530	Other Nonoperating Expenses	0	0	0	0	0
540	Inventory Accounts	0	0	0	0	0
550	Projects Closing Entries	0	0	0	0	0
Subtotal Other		0	0	0	0	0
TOTAL		1,931,349	2,069,197	1,979,788	2,026,111	2,040,558

CITY OF WICHITA 2010/2011 ANNUAL BUDGET

DEPARTMENT	08 POLICE
FUND	100 GENERAL FUND
SERVICE	010502 POLICE TRAINING

POSITION TITLE	2008	2009	2010	RANGE	2009 ADOPTED	2009 REVISED	2010 ADOPTED	2011 APPROVED
Police Captain	1	1	1	D61	88,046	84,846	84,846	84,846
Police Lieutenant*	5	5	4	727	387,804	387,711	324,412	324,412
Police Sergeant	1	1	1	725	75,502	75,508	77,247	77,247
Police Detective	2	2	2	724	130,012	129,991	132,223	132,223
Service Officer II	2	2	2	623	91,282	91,864	93,046	93,046
Senior Storekeeper	1	1	1	621	44,346	45,284	45,455	45,455
Secretary	1	1	1	619	40,424	41,435	41,435	41,435
Customer Service Clerk I	1	1	1	617	36,916	36,951	37,838	37,838
Maintenance Worker	1	1	1	617	36,916	37,341	37,838	37,838
Clerk II	1	1	1	615	31,305	30,568	30,626	30,626
Subtotal	16	16	15		962,552	961,499	904,966	904,966
Savings from scheduled position hold*					0	(74,480)	0	0
Other Regular Salaries					27,383	28,560	28,584	29,448
Total Regular Salaries					989,935	915,579	933,550	934,414
Total Special Salaries					2,720	3,460	3,460	3,460
TOTAL AUTHORIZED POSITIONS	16	16	15					

* One Police Lieutenant position is being held open in 2009 and will be eliminated in 2010.

CITY OF WICHITA 2010/2011 ANNUAL BUDGET

DEPARTMENT	08 POLICE
FUND	100 GENERAL FUND
SERVICE	010503 WARRANT OFFICE

		2008 ACTUAL	2009 ADOPTED	2009 REVISED	2010 ADOPTED	2011 APPROVED
110	Regular Salaries	185,612	161,638	211,029	215,376	215,580
120	Special Salaries	39,156	50,228	27,457	12,882	12,882
130	Overtime	1,286	0	0	0	0
140	Employee Benefits	59,165	75,163	64,542	72,717	75,359
150	Shrinkage	0	-5,741	0	0	0
Subtotal Salaries and Benefits		285,219	281,288	303,028	300,975	303,821
210	Utilities	0	0	0	0	0
220	Communications	8,424	11,110	11,102	11,102	11,102
230	Transportation and Training	0	0	0	0	0
240	Insurance	0	0	0	0	0
250	Professional Services	0	0	0	0	0
260	Data Processing	16,344	16,506	17,112	17,112	17,112
270	Equipment Charges	4,590	4,580	4,590	15,557	15,557
280	Buildings and Grounds Charges	0	0	0	0	0
290	Other Contractuals	9,108	6,240	6,240	6,240	6,240
Subtotal Contractuals		38,466	38,436	39,044	50,011	50,011
310	Office Supplies	353	700	500	500	500
320	Clothing and Towels	0	0	0	0	0
330	Chemicals	0	0	0	0	0
340	Equipment Parts and Supplies	0	0	0	801	801
350	Materials	0	0	0	0	0
370	Building Parts and Materials	0	0	0	0	0
380	Non-capitalizable Equipment	0	0	0	0	0
390	Other Commodities	0	0	0	0	0
Subtotal Commodities		353	700	500	1,301	1,301
410	Land	0	0	0	0	0
420	Buildings	0	0	0	0	0
430	Improvements Other Than Bldgs.	0	0	0	0	0
440	Office Equipment	0	0	0	0	0
450	Vehicular Equipment	0	0	0	0	0
460	Operating Equipment	0	0	0	0	0
Subtotal Capital Outlay		0	0	0	0	0
510	Interfund Transfers	0	0	0	0	0
520	Debt Service	0	0	0	0	0
530	Other Nonoperating Expenses	0	0	0	0	0
540	Inventory Accounts	0	0	0	0	0
550	Projects Closing Entries	0	0	0	0	0
Subtotal Other		0	0	0	0	0
TOTAL		324,038	320,424	342,572	352,287	355,133

CITY OF WICHITA 2010/2011 ANNUAL BUDGET

DEPARTMENT	08 POLICE
FUND	100 GENERAL FUND
SERVICE	010503 WARRANT OFFICE

POSITION TITLE	2008	2009	2010	RANGE	2009 ADOPTED	2009 REVISED	2010 ADOPTED	2011 APPROVED
Police Sergeant*	0	1	1	725	0	75,508	77,247	77,247
Warrant Officer	2	2	2	712	99,370	99,799	101,854	101,854
Customer Service Clerk I*	2	1	1	617	59,424	30,706	31,056	31,056
Subtotal	4	4	4		158,793	206,013	210,156	210,156
Other Regular Salaries					2,845	5,016	5,220	5,424
Total Regular Salaries					161,638	211,029	215,376	215,580
Clerk II (PT 50%)*	4	2	2	615	50,228	27,457	12,882	12,882
Total Special Salaries					50,228	27,457	12,882	12,882
TOTAL AUTHORIZED POSITIONS	8	6	6					

* The 2009 Revised budget includes one Police Sergeant position, concurrent with the elimination of one Customer Service Clerk I positions and two part time Clerk II positions.

CITY OF WICHITA 2010/2011 ANNUAL BUDGET

DEPARTMENT	08 POLICE
FUND	100 GENERAL FUND
SERVICE	010504 SECURITY SERVICES

		2008 ACTUAL	2009 ADOPTED	2009 REVISED	2010 ADOPTED	2011 APPROVED
110	Regular Salaries	619,925	686,788	666,765	675,238	675,442
120	Special Salaries	40	0	360	360	360
130	Overtime	17,755	0	0	0	0
140	Employee Benefits	203,154	235,305	231,444	264,788	278,615
150	Shrinkage	0	-8,576	0	0	0
Subtotal Salaries and Benefits		840,874	913,517	898,569	940,386	954,417
210	Utilities	0	0	0	0	0
220	Communications	8	0	0	0	0
230	Transportation and Training	0	0	0	0	0
240	Insurance	0	0	0	0	0
250	Professional Services	0	0	0	0	0
260	Data Processing	41,916	42,186	42,792	42,792	42,792
270	Equipment Charges	0	6,500	6,500	6,500	6,500
280	Buildings and Grounds Charges	0	0	0	0	0
290	Other Contractuals	1,021	2,480	1,980	1,980	1,980
Subtotal Contractuals		42,945	51,166	51,272	51,272	51,272
310	Office Supplies	957	1,200	1,000	1,000	1,000
320	Clothing and Towels	0	7,430	5,630	5,630	5,630
330	Chemicals	0	0	0	0	0
340	Equipment Parts and Supplies	0	0	0	0	0
350	Materials	0	0	0	0	0
370	Building Parts and Materials	793	0	0	0	0
380	Non-capitalizable Equipment	6,973	3,400	8,000	8,000	8,000
390	Other Commodities	0	0	0	0	0
Subtotal Commodities		8,723	12,030	14,630	14,630	14,630
410	Land	0	0	0	0	0
420	Buildings	0	0	0	0	0
430	Improvements Other Than Bldgs.	0	0	0	0	0
440	Office Equipment	0	0	0	0	0
450	Vehicular Equipment	0	0	0	0	0
460	Operating Equipment	0	0	0	0	0
Subtotal Capital Outlay		0	0	0	0	0
510	Interfund Transfers	0	0	0	0	0
520	Debt Service	0	0	0	0	0
530	Other Nonoperating Expenses	0	0	0	0	0
540	Inventory Accounts	0	0	0	0	0
550	Projects Closing Entries	0	0	0	0	0
Subtotal Other		0	0	0	0	0
TOTAL		892,542	976,713	964,471	1,006,288	1,020,319

CITY OF WICHITA 2010/2011 ANNUAL BUDGET

DEPARTMENT	08 POLICE
FUND	100 GENERAL FUND
SERVICE	010504 SECURITY SERVICES

POSITION TITLE	2008	2009	2010	RANGE	2009 ADOPTED	2009 REVISED	2010 ADOPTED	2011 APPROVED
Security Supervisor	1	1	1	C42	53,916	56,073	56,073	56,073
Security Officer	12	12	12	621	442,588	443,637	450,624	450,624
Security Screener	6	6	6	617	184,063	160,063	161,345	161,345
Subtotal	19	19	19		680,568	659,773	668,042	668,042
Other Regular Salaries					6,220	6,992	7,196	7,400
Total Regular Salaries					686,788	666,765	675,238	675,442
Total Special Salaries					0	360	360	360
TOTAL AUTHORIZED POSITIONS	19	19	19					

CITY OF WICHITA 2010/2011 ANNUAL BUDGET

DEPARTMENT	08 POLICE
FUND	100 GENERAL FUND
SERVICE	010505 POLICE RECORDS

		2008 ACTUAL	2009 ADOPTED	2009 REVISED	2010 ADOPTED	2011 APPROVED
110	Regular Salaries	2,454,705	2,628,069	2,652,764	2,658,472	2,660,656
120	Special Salaries	676	0	0	0	0
130	Overtime	125,882	0	0	0	0
140	Employee Benefits	753,570	809,916	803,384	915,072	957,125
150	Shrinkage	0	-64,468	-65,000	-65,000	-65,000
Subtotal Salaries and Benefits		3,334,833	3,373,517	3,391,149	3,508,544	3,552,781
210	Utilities	0	0	0	0	0
220	Communications	16,846	19,610	19,330	19,330	19,330
230	Transportation and Training	1,081	130	530	880	880
240	Insurance	0	0	0	0	0
250	Professional Services	181	1,200	0	0	0
260	Data Processing	92,749	97,714	98,568	98,568	98,568
270	Equipment Charges	8,190	2,900	1,000	1,000	1,000
280	Buildings and Grounds Charges	450	0	0	0	0
290	Other Contractuals	97,642	94,190	93,850	93,850	93,850
Subtotal Contractuals		217,139	215,744	213,278	213,628	213,628
310	Office Supplies	6,336	7,500	7,500	7,500	7,500
320	Clothing and Towels	0	0	0	0	0
330	Chemicals	0	0	0	0	0
340	Equipment Parts and Supplies	468	150	150	150	150
350	Materials	0	0	0	0	0
370	Building Parts and Materials	0	0	0	0	0
380	Non-capitalizable Equipment	4,774	1,000	0	0	0
390	Other Commodities	538	500	1,000	1,000	1,000
Subtotal Commodities		12,116	9,150	8,650	8,650	8,650
410	Land	0	0	0	0	0
420	Buildings	0	0	0	0	0
430	Improvements Other Than Bldgs.	0	0	0	0	0
440	Office Equipment	0	0	0	0	0
450	Vehicular Equipment	0	0	0	0	0
460	Operating Equipment	0	0	0	0	0
Subtotal Capital Outlay		0	0	0	0	0
510	Interfund Transfers	0	0	0	0	0
520	Debt Service	0	0	0	0	0
530	Other Nonoperating Expenses	0	0	0	0	0
540	Inventory Accounts	0	0	0	0	0
550	Projects Closing Entries	0	0	0	0	0
Subtotal Other		0	0	0	0	0
TOTAL		3,564,088	3,598,411	3,613,077	3,730,822	3,775,059

CITY OF WICHITA 2010/2011 ANNUAL BUDGET

DEPARTMENT	08 POLICE
FUND	100 GENERAL FUND
SERVICE	010505 POLICE RECORDS

POSITION TITLE	2008	2009	2010	RANGE	2009 ADOPTED	2009 REVISED	2010 ADOPTED	2011 APPROVED
Police Captain^^	0	1	1	D61	0	82,319	82,319	82,319
Public Safety Administrator^^	1	0	0	C51	62,126	64,611	64,611	64,611
Section Supervisor	6	6	6	C41	321,063	322,623	322,623	322,623
Program Specialist	1	1	1	C41	52,345	50,464	50,464	50,464
SPIDER Dispatcher	10	10	10	621	419,053	405,316	411,525	411,525
Administrative Aide I	4	4	4	620	146,912	147,019	149,548	149,548
Service Officer I	2	2	2	620	82,844	83,344	84,610	84,610
Customer Service Clerk II	24	24	24	619	752,454	784,554	793,316	793,316
Customer Service Clerk I***	0	16	15	615	724,464	457,312	438,463	438,463
Clerk II***	25	9	9	615	0	269,514	273,120	273,120
Subtotal	73	73	72		2,561,261	2,584,756	2,588,280	2,588,280
Other Regular Salaries					66,808	68,008	70,192	72,376
Total Regular Salaries					2,628,069	2,652,764	2,658,472	2,660,656
TOTAL AUTHORIZED POSITIONS	73	73	72					

*** 16 Clerk II were reclassified to Customer Service Clerk I in the 2008 Revised. One CSC I is eliminated in the 2010 Adopted Budget.

^^ One Public Safety Administrator is eliminated; one Police Captain is added in the 2009 Revised

CITY OF WICHITA 2010/2011 ANNUAL BUDGET

DEPARTMENT	08 POLICE
FUND	100 GENERAL FUND
SERVICE	010506 SPECIAL OPERATIONS

		2008 ACTUAL	2009 ADOPTED	2009 REVISED	2010 ADOPTED	2011 APPROVED
110	Regular Salaries	698,870	696,742	696,014	707,367	707,967
120	Special Salaries	4,090	3,800	2,960	2,960	2,960
130	Overtime	24,328	0	0	0	0
140	Employee Benefits	236,519	251,001	246,978	281,032	291,229
150	Shrinkage	0	-32,143	-32,000	-32,000	-32,000
Subtotal Salaries and Benefits		963,806	919,400	913,952	959,359	970,157
210	Utilities	6,368	7,200	7,460	7,460	7,460
220	Communications	13,559	15,360	14,478	14,478	14,478
230	Transportation and Training	12,711	1,100	1,100	1,100	1,100
240	Insurance	4,470	4,470	5,140	5,140	5,140
250	Professional Services	39,168	30,000	48,064	48,064	48,064
260	Data Processing	35,226	32,420	37,932	37,932	37,932
270	Equipment Charges	27,078	29,450	33,700	21,873	21,873
280	Buildings and Grounds Charges	2,205	1,120	1,120	1,120	1,120
290	Other Contractuals	10,131	9,150	9,150	9,150	9,150
Subtotal Contractuals		150,917	130,270	158,144	146,317	146,317
310	Office Supplies	1,359	1,200	1,200	1,200	1,200
320	Clothing and Towels	0	0	0	0	0
330	Chemicals	0	0	0	0	0
340	Equipment Parts and Supplies	19,861	8,000	17,000	28,126	28,126
350	Materials	140	1,000	100	100	100
370	Building Parts and Materials	3,328	0	0	0	0
380	Non-capitalizable Equipment	10,701	7,300	7,000	7,000	7,000
390	Other Commodities	5,974	4,200	1,850	1,850	1,850
Subtotal Commodities		41,363	21,700	27,150	38,276	38,276
410	Land	0	0	0	0	0
420	Buildings	0	0	0	0	0
430	Improvements Other Than Bldgs.	0	0	0	0	0
440	Office Equipment	0	0	0	0	0
450	Vehicular Equipment	0	0	0	0	0
460	Operating Equipment	0	0	0	0	0
Subtotal Capital Outlay		0	0	0	0	0
510	Interfund Transfers	0	0	0	0	0
520	Debt Service	0	0	0	0	0
530	Other Nonoperating Expenses	0	0	0	0	0
540	Inventory Accounts	0	0	0	0	0
550	Projects Closing Entries	0	0	0	0	0
Subtotal Other		0	0	0	0	0
TOTAL		1,156,085	1,071,370	1,099,246	1,143,952	1,154,750

CITY OF WICHITA 2010/2011 ANNUAL BUDGET

DEPARTMENT	08 POLICE
FUND	100 GENERAL FUND
SERVICE	010506 SPECIAL OPERATIONS

POSITION TITLE	2008	2009	2010	RANGE	2009 ADOPTED	2009 REVISED	2010 ADOPTED	2011 APPROVED
Police Captain	1	1	1	D61	81,263	84,923	84,923	84,923
Police Lieutenant	2	2	2	727	159,514	152,857	155,526	155,526
Police Detective	4	4	4	724	246,116	247,427	252,048	252,048
Police Officer	1	1	1	723	58,709	59,612	60,176	60,176
Traffic Safety Officer*	1	0	0	711	0	0	0	0
Service Officer II*	1	2	2	623	97,579	97,676	99,926	99,926
Service Officer I**	0	1	1	620	0	35,818	36,468	36,468
Clerk III**	1	0	0	617	35,364	0	0	0
Subtotal	11	11	11		678,545	678,314	689,067	689,067
Other Regular Salaries					16,997	16,500	17,100	17,700
Total Regular Salaries					696,742	696,014	707,367	707,967
Total Special Salaries					3,800	2,960	2,960	2,960
TOTAL AUTHORIZED POSITIONS	11	11	11					

* One Traffic Safety Officer position was reclassified to a Service Officer II position.

** One Clerk III position was reclassified to a Service Officer I position.

CITY OF WICHITA 2010/2011 ANNUAL BUDGET

DEPARTMENT	08 POLICE
FUND	100 GENERAL FUND
SERVICE	010508 POLICE PROFESSIONAL STANDARDS

		2008 ACTUAL	2009 ADOPTED	2009 REVISED	2010 ADOPTED	2011 APPROVED
110	Regular Salaries	328,219	341,455	347,838	352,039	352,279
120	Special Salaries	2,478	2,000	2,600	2,600	2,600
130	Overtime	3,797	0	0	0	0
140	Employee Benefits	111,916	106,867	118,047	134,818	139,723
150	Shrinkage	0	-9,006	0	0	0
Subtotal Salaries and Benefits		446,410	441,316	468,485	489,457	494,602
210	Utilities	0	0	0	0	0
220	Communications	2,405	2,790	2,488	2,488	2,488
230	Transportation and Training	1,365	1,250	2,000	2,000	2,000
240	Insurance	1,340	1,340	2,010	2,010	2,010
250	Professional Services	0	0	0	0	0
260	Data Processing	17,640	16,845	17,112	17,112	17,112
270	Equipment Charges	11,292	11,800	11,800	7,660	7,660
280	Buildings and Grounds Charges	0	0	0	0	0
290	Other Contractuals	1,451	1,500	1,500	1,500	1,500
Subtotal Contractuals		35,493	35,525	36,910	32,770	32,770
310	Office Supplies	730	850	850	850	850
320	Clothing and Towels	0	0	0	0	0
330	Chemicals	0	0	0	0	0
340	Equipment Parts and Supplies	0	0	0	2,021	2,021
350	Materials	0	0	0	0	0
370	Building Parts and Materials	0	0	0	0	0
380	Non-capitalizable Equipment	284	450	450	450	450
390	Other Commodities	0	100	100	100	100
Subtotal Commodities		1,014	1,400	1,400	3,421	3,421
410	Land	0	0	0	0	0
420	Buildings	0	0	0	0	0
430	Improvements Other Than Bldgs.	0	0	0	0	0
440	Office Equipment	0	0	0	0	0
450	Vehicular Equipment	0	0	0	0	0
460	Operating Equipment	0	0	0	0	0
Subtotal Capital Outlay		0	0	0	0	0
510	Interfund Transfers	0	0	0	0	0
520	Debt Service	0	0	0	0	0
530	Other Nonoperating Expenses	0	0	0	0	0
540	Inventory Accounts	0	0	0	0	0
550	Projects Closing Entries	0	0	0	0	0
Subtotal Other		0	0	0	0	0
TOTAL		482,917	478,241	506,795	525,648	530,793

CITY OF WICHITA 2010/2011 ANNUAL BUDGET

DEPARTMENT	08 POLICE
FUND	100 GENERAL FUND
SERVICE	010508 POLICE PROFESSIONAL STANDARDS

POSITION TITLE	2008	2009	2010	RANGE	2009 ADOPTED	2009 REVISED	2010 ADOPTED	2011 APPROVED
Police Captain	1	1	1	D61	81,656	91,568	91,568	91,568
Police Lieutenant	1	1	1	727	79,757	79,763	81,600	81,600
Police Sergeant	1	1	1	725	75,502	75,508	77,247	77,247
Police Detective	1	1	1	724	64,148	64,197	64,499	64,499
Secretary*	0	1	1		0	29,242	29,325	29,325
Clerk II*	1	0	0	615	29,044	0	0	0
Subtotal	5	5	5		330,107	340,278	344,239	344,239
Other Regular Salaries					11,348	7,560	7,800	8,040
Total Regular Salaries					341,455	347,838	352,039	352,279
Total Special Salaries					2,000	2,600	2,600	2,600
TOTAL AUTHORIZED POSITIONS	5	5	5					

* One Clerk II has been reclassified to a Secretary position.

CITY OF WICHITA 2010/2011 ANNUAL BUDGET

DEPARTMENT	08 POLICE
FUND	100 GENERAL FUND
SERVICE	011002 POLICE ADMINISTRATION

		2008 ACTUAL	2009 ADOPTED	2009 REVISED	2010 ADOPTED	2011 APPROVED
110	Regular Salaries	654,034	657,288	677,473	681,224	681,668
120	Special Salaries	2,700	2,760	2,760	2,760	2,760
130	Overtime	0	0	0	0	0
140	Employee Benefits	180,437	199,564	186,961	214,343	220,113
150	Shrinkage	0	-33,103	0	0	0
Subtotal Salaries and Benefits		837,170	826,509	867,194	898,327	904,541
210	Utilities	0	0	0	0	0
220	Communications	6,819	7,150	7,254	7,254	7,254
230	Transportation and Training	28,097	38,560	32,580	32,580	32,580
240	Insurance	2,680	2,680	5,360	5,360	5,360
250	Professional Services	42,508	53,980	49,980	49,980	49,980
260	Data Processing	37,635	47,565	32,400	32,400	32,400
270	Equipment Charges	44,064	51,470	72,640	44,647	44,647
280	Buildings and Grounds Charges	347	0	0	0	0
290	Other Contractuals	10,212	31,830	9,690	9,690	9,690
Subtotal Contractuals		172,362	233,235	209,904	181,911	181,911
310	Office Supplies	2,678	4,520	4,100	4,100	4,100
320	Clothing and Towels	0	0	0	0	0
330	Chemicals	0	0	0	0	0
340	Equipment Parts and Supplies	5,481	10,000	10,000	18,564	18,564
350	Materials	0	0	0	0	0
370	Building Parts and Materials	0	0	0	0	0
380	Non-capitalizable Equipment	190	0	0	0	0
390	Other Commodities	612	300	300	300	300
Subtotal Commodities		8,961	14,820	14,400	22,964	22,964
410	Land	0	0	0	0	0
420	Buildings	0	0	0	0	0
430	Improvements Other Than Bldgs.	0	0	0	0	0
440	Office Equipment	0	0	0	0	0
450	Vehicular Equipment	0	0	0	0	0
460	Operating Equipment	0	0	0	0	0
Subtotal Capital Outlay		0	0	0	0	0
510	Interfund Transfers	0	0	0	0	0
520	Debt Service	0	0	0	0	0
530	Other Nonoperating Expenses	0	0	0	0	0
540	Inventory Accounts	0	0	0	0	0
550	Projects Closing Entries	0	0	0	0	0
Subtotal Other		0	0	0	0	0
TOTAL		1,018,494	1,074,564	1,091,498	1,103,202	1,109,416

CITY OF WICHITA 2010/2011 ANNUAL BUDGET

DEPARTMENT	08 POLICE
FUND	100 GENERAL FUND
SERVICE	011002 POLICE ADMINISTRATION

POSITION TITLE	2008	2009	2010	RANGE	2009 ADOPTED	2009 REVISED	2010 ADOPTED	2011 APPROVED
Department Director	1	1	1	E83	140,521	146,142	146,142	146,142
Deputy Police Chief	3	3	3	D71	295,799	307,630	307,630	307,630
Communications Specialist	1	1	1	C41	56,422	58,679	58,679	58,679
Administrative Secretary	1	1	1	621	44,346	44,389	45,455	45,455
Secretary	3	3	3	619	108,935	109,101	111,342	111,342
Subtotal	9	9	9		646,023	665,941	669,248	669,248
Other Regular Salaries					11,265	11,532	11,976	12,420
Total Regular Salaries					657,288	677,473	681,224	681,668
Total Special Salaries					2,760	2,760	2,760	2,760
TOTAL AUTHORIZED POSITIONS	9	9	9					