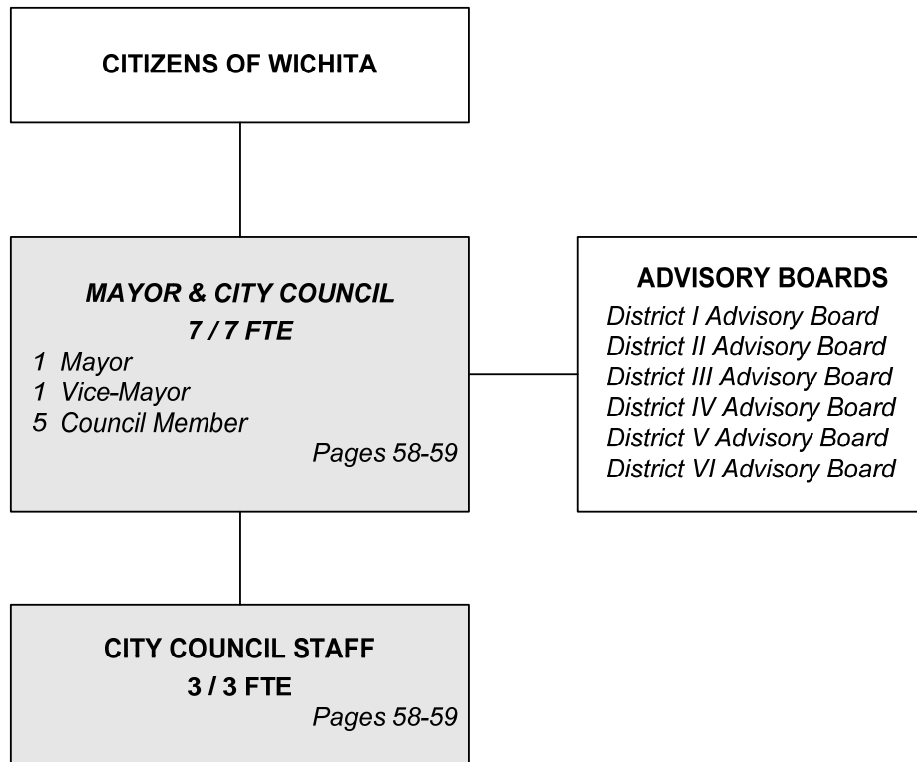




# ORGANIZATION CHART AND AUTHORIZED POSITIONS

## CITY COUNCIL



Total Authorized Positions/Full-Time Equivalent = 10 / 10 FTE

Authorized Positions	Range	2008	2009	2010
Mayor		1	1	1
Vice-Mayor		1	1	1
City Council Members		5	5	5
Executive Assistant to the Mayor and City Council	C41	1	1	1
Administrative Secretary	621	2	2	2
<b>TOTAL AUTHORIZED POSITIONS</b>		<b>10</b>	<b>10</b>	<b>10</b>
General Fund		10	10	10



**MISSION**

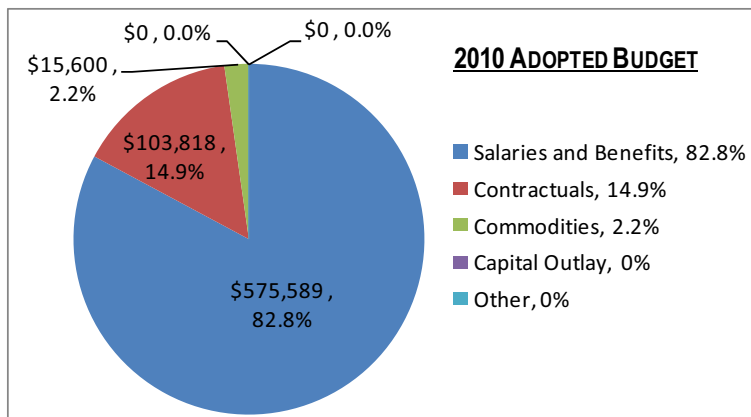
To provide policy direction for the City of Wichita in developing, implementing, and maintaining services to the citizens of Wichita.

**DEPARTMENTAL GOALS**

1. Provide policy direction for the City of Wichita and all staff members.
2. Increase sense of community, neighborhood involvement and satisfaction.
3. To be an active participant in the Sister Cities International program.

DEPT. GOAL ALIGNMENT	Service Objectives
1.	A. Establishes policy direction for the City by enacting ordinances, laws, policies adopting the budget, levying taxes, and appointing members to citizen advisory boards and commissions.
2.	B. Provides opportunities and promotes citizen participation through District Advisory Boards.
3.	C. Enriches community life through exhibits, tours, and exchanges; provides a setting for meeting community leaders from cities around the world; and creates opportunities for cultural activities.

SERVICES EXPENDITURES BY FUND	FUND	2008 ACTUAL	2009 ADOPTED	2009 REVISED	2010 ADOPTED	2011 APPROVED
City Council	General Fund	708,811	706,630	711,248	695,007	702,586
<b>TOTAL EXPENDITURES</b>		<b>\$708,811</b>	<b>\$706,630</b>	<b>\$711,248</b>	<b>\$695,007</b>	<b>\$702,586</b>
	<b>2010</b>					
<b>TOTAL GENERAL FUND</b>	<b>100.0%</b>	<b>\$708,811</b>	<b>\$706,630</b>	<b>\$711,248</b>	<b>\$695,007</b>	<b>\$702,586</b>



The City Council budget is solely funded by General Fund property tax dollars. Almost 83% (82.8%) of the expenditure budget is allocated for human resources costs, salaries and benefits. Three support staff assist the seven-member City Council with daily business and all special events and activities throughout the year.

Approximately 15% of the total budget is allocated to the contractual expenditures budget to provide technology support and travel/hosting expenses for the City Council with the opportunities to visit/receive visitors of Sister Cities. The commodities budget of 2% is reserved for office supplies and materials. The 2010 Budget is adopted with a 4% reduction from its base budget to accommodate the funding shortfall during the current economic downturn.



**MISSION**

Provide policy direction for developing and sustaining the health, safety and well being of the community.

**SERVICE DESCRIPTION**

The six City of Wichita Council Members and Mayor serve overlapping four-year terms. The City Council and Mayor provide leadership and policy direction through weekly meetings on Tuesday to enact legislation and conduct workshops or other local government business on behalf of the citizens of Wichita. In addition, the Council Members hold memberships in various local, regional and national organizations. The City Council appoints up to 166 citizen members to 23 various advisory boards and commissions, which serve as forums for public comment and input on a variety of issues that are of interest to members of the community. They communicate with citizens by attending community meetings and responding to personal citizen contacts and inquiries. In addition, they exchange ideas with other municipalities regionally, nationally and internationally. The Council creates an economic development climate, which makes Wichita attractive and receptive to businesses, in order to maintain and expand employment opportunities for its citizens.

The City of Wichita has been an active member of Sister Cities International for four decades. The program affords opportunities for cultural and travel exchanges, and provides potential economic ties. Wichita's Sister Cities are Cancun and Tlalneantla, Mexico; Orleans, France; and Kaifeng, China. The Sister Cities International program provides host families for visitors from Wichita's Sister Cities and supports student exchange programs for students from Wichita's Sister Cities.

SERVICE OBJECTIVES		DEPT. GOAL ALIGNMENT
A	Establishes policy direction for the City by enacting ordinances, laws, policies adopting the budget, levying taxes, and appointing members to citizen advisory boards and commissions.	1
B	Provides opportunities and promotes citizen participation through District Advisory Boards.	2
C	Enriches community life through exhibits, tours, and exchanges; provides a setting for meeting community leaders from cities around the world; and creates opportunities for cultural activities.	3

**STRATEGIC HIGHLIGHTS**

- ◆ The City of Wichita received the All-America City Award in June 2009.
- ◆ Forbes Magazine ranked Wichita the #1 place in the country to live a good life inexpensively. It also ranked Wichita #9 in job opportunities.
- ◆ American City Business Journals ranked Wichita #2 among most affordable markets to own a home.
- ◆ Money Magazine ranked Wichita #9 on the list of best big cities.
- ◆ msn.com ranked Wichita as one of the "Most Livable Cities" out of the top 100 largest cities in the country.

REVENUES BY SOURCES / EXPENDITURES BY CATEGORY	2008 ACTUAL	2009 ADOPTED	2009 REVISED	2010 ADOPTED	2011 APPROVED
General Fund Allocation	708,811	706,630	711,248	695,007	702,586
<b>TOTAL PROGRAM REVENUES</b>	<b>\$708,811</b>	<b>\$706,630</b>	<b>\$711,248</b>	<b>\$695,007</b>	<b>\$702,586</b>
Salaries and Benefits	546,920	561,790	560,828	575,589	583,168
Contractuals	136,428	116,140	119,470	103,818	103,818
Commodities	25,463	20,950	20,950	15,600	15,600
Capital Outlay	0	0	0	0	0
Other	0	7,750	10,000	0	0
<b>TOTAL PROGRAM EXPENDITURE</b>	<b>\$708,811</b>	<b>\$706,630</b>	<b>\$711,248</b>	<b>\$695,007</b>	<b>\$702,586</b>
<b>TOTAL POSITIONS / FTE</b>	<b>10 / 10</b>	<b>10 / 10</b>	<b>10 / 10</b>	<b>10 / 10</b>	<b>10 / 10</b>