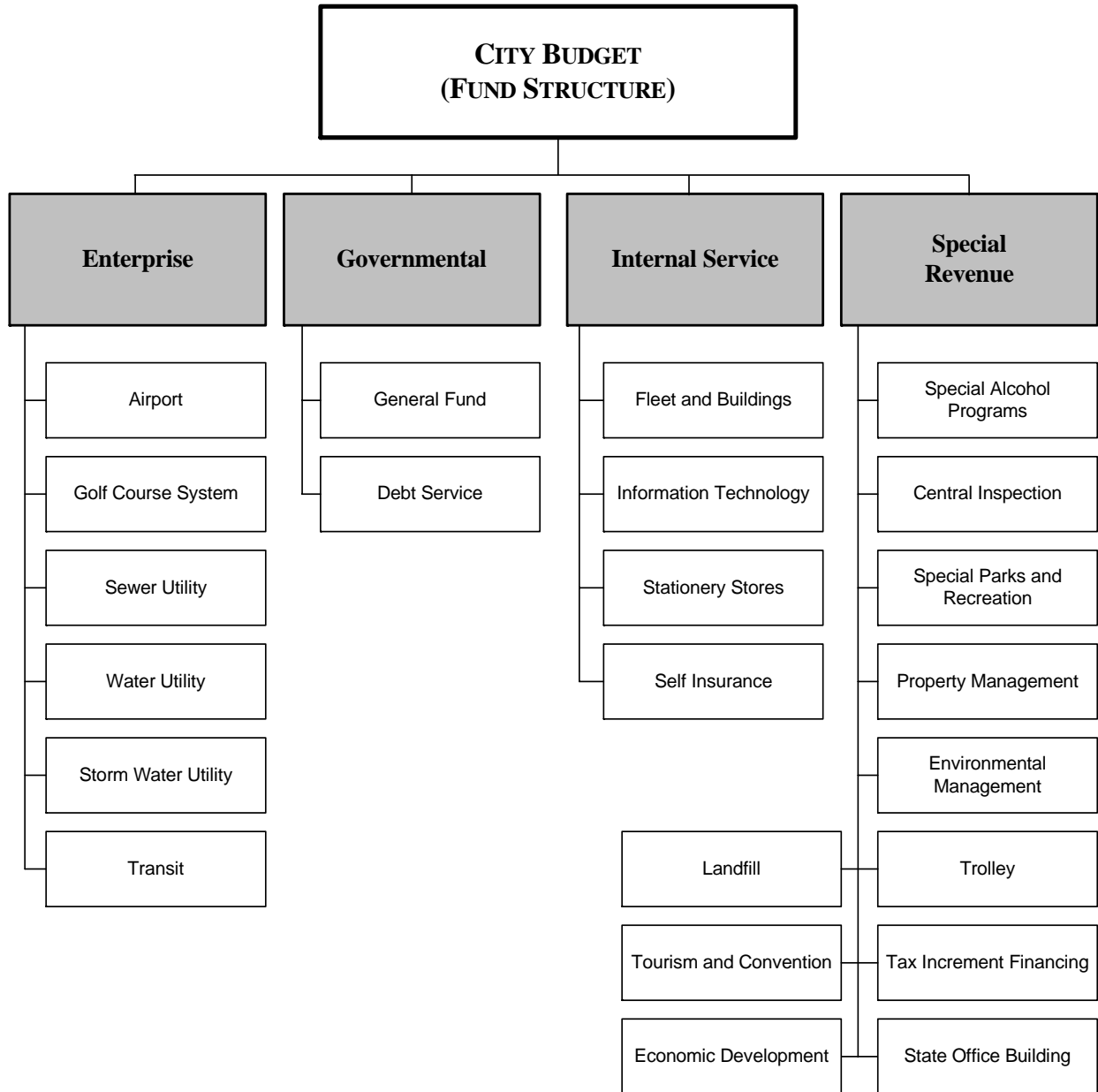




FUND STRUCTURE



City of Wichita
Department of Finance
July 2002



KEEPER OF THE PLAINS

The symbol of Wichita and Sedgwick County, this majestic 44-foot sculpture was designed by Blackbear Bosin (1921-1980), a Kiowa-Comanche and internationally recognized artist, muralist and designer. Face raised toward the sky, the Keeper of the Plains lifts his arms in supplication to the Great Spirit.

The landmark five-ton statue was erected in 1974 at the confluence of the Big and Little Arkansas Rivers, an historic meeting place for the Plains tribes and a traditional Native-American ceremonial site. It was fashioned from 6 x 12-foot sheets of 10 gauge Cor-Ten weathering steel at a cost of \$28,500. The statue may be viewed from behind the Mid-America All-Indian Center at 650 N. Seneca (262-5221) or from McLean Boulevard, between Seneca and Second Street.