

Authorized Department Positions

Chief	1
Dep. Chief	3
Captain	12
Lieutenant	38
Sergeant	58
Detective	104 (includes 2 grant)
Police Officer	452 (includes 1 grant)
Total Commissioned 668	
Total Civilian 190 (includes 1 grant)	
Total Positions 858	

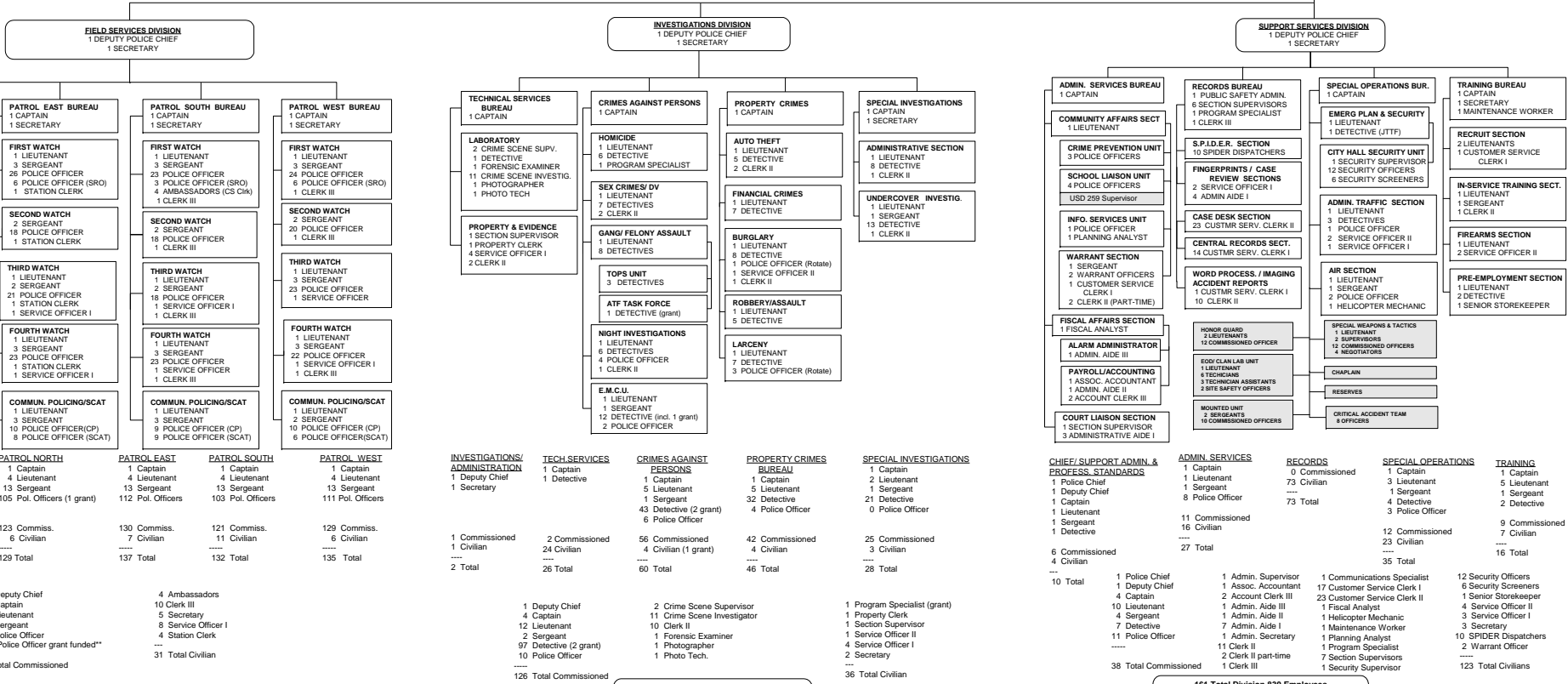
WICHITA POLICE DEPARTMENT

ORGANIZATIONAL CHART

1 CHIEF OF POLICE
1 COMMUNICATIONS SPECIALIST
1 ADMIN. SECRETARY

CRITICAL INCIDENT STRESS MANAGEMENT TEAM
1 AGENCY COORDINATOR
14 EMPLOYEES

PROFESSIONAL STANDARDS
1 CAPTAIN
1 LIEUTENANT
1 SERGEANT
1 DETECTIVE
1 SECRETARY



535 Total Division 810 Employees

162 Total Division 820 Employees

161 Total Division 830 Employees

Positions in shaded boxes are filled with existing, not additional, personnel.