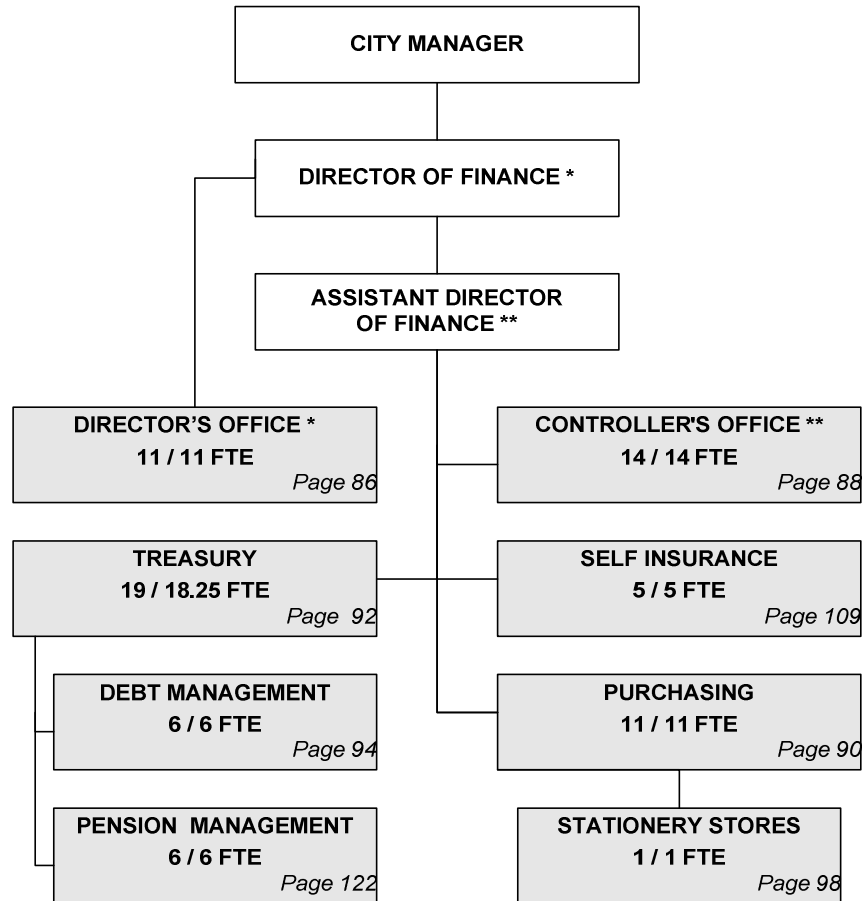


CITY OF WICHITA 2009/2010 ANNUAL BUDGET

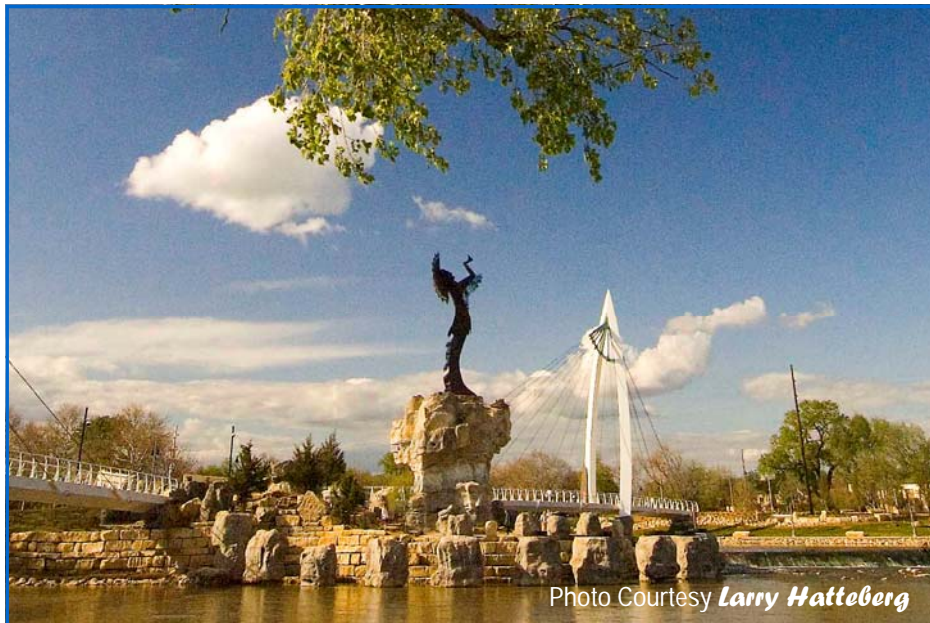
Departmental Organization Chart

FINANCE



* Position included with Director's Office
 ** Position included with Controller's Office
 ^ Non-locally funded positions

Total Positions/Full-Time Equivalent = **73 / 72.25 FTE**



The Keeper of the Plains sculpture raises his face toward the sky and lifts his arms in supplication to the Great Spirit.

THE KEEPER OF THE PLAINS...

A symbol of Wichita and Sedgwick County, this majestic 44-foot sculpture was designed by Blackbear Bosin (1921-1980), a Kiowa-Comanche and internationally recognized artist, muralist and designer. On May 18, 1974 a ceremony took place to dedicate the Keeper, which was designated as a Wichita Bicentennial project. The project was rededicated to the community on the 33rd anniversary of that Bicentennial project date. The 5-ton sculpture was placed at the confluence of the little and big Arkansas Rivers, which is considered a sacred site by Native Americans and was home to the Wichita tribe for many years.

A 2006 project to elevate the sculpture on a 30-foot rock promontory so it could be seen from farther away was completed and officially dedicated by Mayor Carl Brewer and the City Council on May 18, 2007.

CITY OF WICHITA 2009/2010 ANNUAL BUDGET

FUND **100 GENERAL**
DEPARTMENT **03 FINANCE**

COMBINED DETAIL SUMMARY

		2007 ACTUAL	2008 ADOPTED	2008 REVISED	2009 ADOPTED	2010 APPROVED
110	Regular Salaries	2,558,766	2,813,360	2,851,309	2,911,110	2,936,178
120	Special Salaries	12,944	61,020	69,234	71,354	72,210
130	Overtime	2,066	0	0	0	0
140	Employee Benefits	584,986	728,210	707,852	762,271	800,054
150	Shrinkage	0	0	0	-361,665	-361,883
Subtotal Salaries and Benefits		3,158,762	3,602,590	3,628,395	3,383,069	3,446,559
210	Utilities	0	0	0	0	0
220	Communications	74,262	72,470	84,325	85,137	85,137
230	Transportation and Training	19,927	21,640	28,285	26,340	26,340
240	Insurance	0	1,680	0	0	0
250	Professional Services	130,324	119,930	131,765	131,765	131,765
260	Data Processing	281,578	317,980	328,439	321,239	321,239
270	Equipment Charges	6,290	6,790	7,290	7,290	7,290
280	Buildings and Grounds Charges	0	0	0	0	0
290	Other Contractuals	108,974	116,550	118,135	118,975	118,975
Subtotal Contractuals		621,355	657,040	698,239	690,746	690,746
310	Office Supplies	17,533	22,320	22,320	22,320	22,320
320	Clothing and Towels	0	0	0	0	0
330	Chemicals	0	0	0	0	0
340	Equipment Parts and Supplies	125	4,600	4,600	4,600	4,600
350	Materials	0	0	0	0	0
370	Building Parts and Materials	0	0	0	0	0
380	Non-capitalizable Equipment	4,570	2,190	2,190	2,190	2,190
390	Other Commodities	1,022	800	800	800	800
Subtotal Commodities		23,250	29,910	29,910	29,910	29,910
410	Land	0	0	0	0	0
420	Buildings	0	0	0	0	0
430	Improvements Other Than Bldgs.	0	0	0	0	0
440	Office Equipment	0	0	0	0	0
450	Vehicular Equipment	0	0	0	0	0
460	Operating Equipment	0	0	0	0	0
Subtotal Capital Outlay		0	0	0	0	0
510	Interfund Transfers	0	0	24,360	24,760	25,110
520	Debt Service	0	0	0	0	0
530	Other Non-operating Expenses	0	0	0	0	0
540	Inventory Accounts	0	0	0	0	0
550	Projects Closing Entries	0	0	0	0	0
Subtotal Other		0	0	24,360	24,760	25,110
TOTAL		3,803,367	4,289,540	4,380,904	4,128,485	4,192,325

CITY OF WICHITA 2009/2010 ANNUAL BUDGET

DEPARTMENT	03 FINANCE
FUND	100 GENERAL FUND
SERVICE	060402 DIRECTOR'S OFFICE
GOAL	6 INTERNAL PERSPECTIVE

		2007 ACTUAL	2008 ADOPTED	2008 REVISED	2009 ADOPTED	2010 APPROVED
110	Regular Salaries	513,388	636,990	627,952	630,463	631,657
120	Special Salaries	2,910	30,760	36,760	36,760	36,760
130	Overtime	167	0	0	0	0
140	Employee Benefits	114,248	176,300	163,523	174,822	183,430
150	Shrinkage	0	0	0	-93,326	-91,802
Subtotal Salaries and Benefits		630,714	844,050	828,235	748,719	760,044
210	Utilities	0	0	0	0	0
220	Communications	4,866	6,000	6,000	6,000	6,000
230	Transportation and Training	8,564	8,490	8,490	8,490	8,490
240	Insurance	0	1,680	0	0	0
250	Professional Services	638	6,450	6,450	6,450	6,450
260	Data Processing	64,340	61,010	71,198	68,174	68,174
270	Equipment Charges	2	240	240	240	240
280	Buildings and Grounds Charges	0	0	0	0	0
290	Other Contractuals	37,366	34,430	34,490	34,430	34,430
Subtotal Contractuals		115,777	118,300	126,868	123,784	123,784
310	Office Supplies	2,129	3,120	3,120	3,120	3,120
320	Clothing and Towels	0	0	0	0	0
330	Chemicals	0	0	0	0	0
340	Equipment Parts and Supplies	0	0	0	0	0
350	Materials	0	0	0	0	0
370	Building Parts and Materials	0	0	0	0	0
380	Non-capitalizable Equipment	1,719	1,300	1,300	1,300	1,300
390	Other Commodities	365	150	150	150	150
Subtotal Commodities		4,212	4,570	4,570	4,570	4,570
410	Land	0	0	0	0	0
420	Buildings	0	0	0	0	0
430	Improvements Other Than Bldgs.	0	0	0	0	0
440	Office Equipment	0	0	0	0	0
450	Vehicular Equipment	0	0	0	0	0
460	Operating Equipment	0	0	0	0	0
Subtotal Capital Outlay		0	0	0	0	0
510	Interfund Transfers	0	0	0	0	0
520	Debt Service	0	0	0	0	0
530	Other Non-operating Expenses	0	0	0	0	0
540	Inventory Accounts	0	0	0	0	0
550	Projects Closing Entries	0	0	0	0	0
Subtotal Other		0	0	0	0	0
TOTAL		750,703	966,920	959,673	877,073	888,398

CITY OF WICHITA 2009/2010 ANNUAL BUDGET

DEPARTMENT	03 FINANCE
FUND	100 GENERAL FUND
SERVICE	060402 DIRECTOR'S OFFICE
GOAL	6 INTERNAL PERSPECTIVE

POSITION TITLE	2007	2008	2009	RANGE	2008 ADOPTED	2008 REVISED	2009 ADOPTED	2010 APPROVED
Department Director*	1	1	1	E83	111,080	120,555	120,555	120,555
Budget Officer	1	1	1	D62	84,940	90,111	90,111	90,111
Principal Budget Analyst	2	2	2	C44	141,470	127,342	127,342	127,342
Senior Budget Analyst	2	2	2	C43	120,040	108,383	108,383	108,383
Budget Analyst	3	3	3	C42	143,940	144,837	144,837	144,837
Administrative Secretary	1	1	1	621	32,680	34,143	36,397	37,307
Subtotal	10	10	10		634,150	625,372	627,625	628,535
Other Regular Salaries					2,840	2,580	2,838	3,122
Total Regular Salaries					636,990	627,952	630,463	631,657
Management Intern	1	1	1	601	28,000	34,000	34,000	34,000
Other Special Salaries					2,760	2,760	2,760	2,760
Total Special Salaries					30,760	36,760	36,760	36,760
TOTAL AUTHORIZED POSITIONS	11	11	11					

* The Department Director position is reimbursed as follows: 25% from the Self Insurance Fund and 10% from Pension funds.

CITY OF WICHITA 2009/2010 ANNUAL BUDGET

DEPARTMENT	03 FINANCE
FUND	100 GENERAL FUND
SERVICE	060403 CONTROLLER'S OFFICE
GOAL	6 INTERNAL PERSPECTIVE

		2007 ACTUAL	2008 ADOPTED	2008 REVISED	2009 ADOPTED	2010 APPROVED
110	Regular Salaries	645,073	727,490	757,693	768,960	775,841
120	Special Salaries	320	360	360	360	360
130	Overtime	389	0	0	0	0
140	Employee Benefits	157,090	203,420	191,589	205,776	215,884
150	Shrinkage	0	0	0	-77,632	-78,416
Subtotal Salaries and Benefits		802,872	931,270	949,642	897,464	913,668
210	Utilities	0	0	0	0	0
220	Communications	7,681	8,480	8,720	9,340	9,340
230	Transportation and Training	3,835	5,490	5,490	5,490	5,490
240	Insurance	0	0	0	0	0
250	Professional Services	106,628	96,900	108,260	108,260	108,260
260	Data Processing	58,696	70,820	69,108	68,520	68,520
270	Equipment Charges	0	0	0	0	0
280	Buildings and Grounds Charges	0	0	0	0	0
290	Other Contractuals	16,816	22,010	21,270	21,270	21,270
Subtotal Contractuals		193,656	203,700	212,848	212,880	212,880
310	Office Supplies	3,846	3,290	3,290	3,290	3,290
320	Clothing and Towels	0	0	0	0	0
330	Chemicals	0	0	0	0	0
340	Equipment Parts and Supplies	0	0	0	0	0
350	Materials	0	0	0	0	0
370	Building Parts and Materials	0	0	0	0	0
380	Non-capitalizable Equipment	162	500	500	500	500
390	Other Commodities	46	0	0	0	0
Subtotal Commodities		4,055	3,790	3,790	3,790	3,790
410	Land	0	0	0	0	0
420	Buildings	0	0	0	0	0
430	Improvements Other Than Bldgs.	0	0	0	0	0
440	Office Equipment	0	0	0	0	0
450	Vehicular Equipment	0	0	0	0	0
460	Operating Equipment	0	0	0	0	0
Subtotal Capital Outlay		0	0	0	0	0
510	Interfund Transfers	0	0	0	0	0
520	Debt Service	0	0	0	0	0
530	Other Non-operating Expenses	0	0	0	0	0
540	Inventory Accounts	0	0	0	0	0
550	Projects Closing Entries	0	0	0	0	0
Subtotal Other		0	0	0	0	0
TOTAL		1,000,583	1,138,760	1,166,280	1,114,134	1,130,338

CITY OF WICHITA 2009/2010 ANNUAL BUDGET

DEPARTMENT	03 FINANCE
FUND	100 GENERAL FUND
SERVICE	060403 CONTROLLER'S OFFICE
GOAL	6 INTERNAL PERSPECTIVE

POSITION TITLE	2007	2008	2009	RANGE	2008 ADOPTED	2008 REVISED	2009 ADOPTED	2010 APPROVED
Assistant Department Director	1	1	1	D72	93,490	98,942	98,942	98,942
Controller	1	1	1	D62	81,620	86,587	86,587	86,587
Senior Accountant	3	3	3	C43	173,420	183,405	183,405	183,405
Accountant	3	3	3	C41	150,650	157,748	157,748	157,748
Account Clerk III	2	2	2	621	84,270	85,280	88,692	93,126
Account Clerk II	3	3	3	619	108,470	109,978	115,215	116,075
Secretary	1	1	1	619	27,650	28,144	30,001	30,752
Subtotal	14	14	14		719,570	750,085	760,591	766,636
Other Regular Salaries					7,920	7,608	8,369	9,206
Total Regular Salaries					727,490	757,693	768,960	775,841
Total Special Salaries					360	360	360	360
TOTAL AUTHORIZED POSITIONS	14	14	14					

CITY OF WICHITA 2009/2010 ANNUAL BUDGET

DEPARTMENT	03 FINANCE
FUND	100 GENERAL FUND
SERVICE	060404 PURCHASING
GOAL	6 INTERNAL PERSPECTIVE

		2007 ACTUAL	2008 ADOPTED	2008 REVISED	2009 ADOPTED	2010 APPROVED
110	Regular Salaries	558,120	558,680	572,080	581,791	586,320
120	Special Salaries	0	0	0	0	0
130	Overtime	263	0	0	0	0
140	Employee Benefits	120,854	124,360	136,336	146,372	153,459
150	Shrinkage	0	0	0	-95,341	-96,700
Subtotal Salaries and Benefits		679,238	683,040	708,416	632,822	643,080
210	Utilities	0	0	0	0	0
220	Communications	8,546	8,400	8,400	8,400	8,400
230	Transportation and Training	6,986	3,980	7,030	5,630	5,630
240	Insurance	0	0	0	0	0
250	Professional Services	3,187	160	635	635	635
260	Data Processing	37,352	55,500	57,048	55,848	55,848
270	Equipment Charges	362	850	850	850	850
280	Buildings and Grounds Charges	0	0	0	0	0
290	Other Contractuals	13,787	18,210	18,460	18,460	18,460
Subtotal Contractuals		70,220	87,100	92,423	89,823	89,823
310	Office Supplies	1,754	2,240	2,240	2,240	2,240
320	Clothing and Towels	0	0	0	0	0
330	Chemicals	0	0	0	0	0
340	Equipment Parts and Supplies	0	0	0	0	0
350	Materials	0	0	0	0	0
370	Building Parts and Materials	0	0	0	0	0
380	Non-capitalizable Equipment	0	0	0	0	0
390	Other Commodities	479	650	650	650	650
Subtotal Commodities		2,233	2,890	2,890	2,890	2,890
410	Land	0	0	0	0	0
420	Buildings	0	0	0	0	0
430	Improvements Other Than Bldgs.	0	0	0	0	0
440	Office Equipment	0	0	0	0	0
450	Vehicular Equipment	0	0	0	0	0
460	Operating Equipment	0	0	0	0	0
Subtotal Capital Outlay		0	0	0	0	0
510	Interfund Transfers	0	0	0	0	0
520	Debt Service	0	0	0	0	0
530	Other Non-operating Expenses	0	0	0	0	0
540	Inventory Accounts	0	0	0	0	0
550	Projects Closing Entries	0	0	0	0	0
Subtotal Other		0	0	0	0	0
TOTAL		751,690	773,030	803,729	725,535	735,793

CITY OF WICHITA 2009/2010 ANNUAL BUDGET

DEPARTMENT	03 FINANCE
FUND	100 GENERAL FUND
SERVICE	060404 PURCHASING
GOAL	6 INTERNAL PERSPECTIVE

POSITION TITLE	2007	2008	2009	RANGE	2008 ADOPTED	2008 REVISED	2009 ADOPTED	2010 APPROVED
Purchasing Manager	1	1	1	D62	89,020	94,208	94,208	94,208
Senior Buyer	1	1	1	C43	66,820	70,886	70,886	70,886
Buyer	5	5	5	C41	250,760	264,352	264,352	264,352
Administrative Aide III	1	1	1	926	48,170	49,106	52,347	53,656
Secretary	1	1	1	619	30,370	30,978	33,022	33,848
Account Clerk I	1	1	1	617	28,120	28,668	30,560	31,325
Clerk III	1	1	1	617	34,820	25,145	26,805	27,475
Subtotal	11	11	11		548,080	563,344	572,181	575,749
Other Regular Salaries					10,600	8,736	9,610	10,571
Total Regular Salaries					558,680	572,080	581,791	586,320
TOTAL AUTHORIZED POSITIONS	11	11	11					

CITY OF WICHITA 2009/2010 ANNUAL BUDGET

DEPARTMENT	03 FINANCE
FUND	100 GENERAL FUND
SERVICE	060401 TREASURY
GOAL	6 INTERNAL PERSPECTIVE

		2007 ACTUAL	2008 ADOPTED	2008 REVISED	2009 ADOPTED	2010 APPROVED
110	Regular Salaries	603,499	626,830	663,912	691,082	700,927
120	Special Salaries	9,754	29,900	32,114	34,234	35,090
130	Overtime	1,247	0	0	0	0
140	Employee Benefits	123,766	145,550	155,591	169,113	177,459
150	Shrinkage	0	0	0	-66,599	-65,670
Subtotal Salaries and Benefits		738,265	802,280	851,617	827,829	847,806
210	Utilities	0	0	0	0	0
220	Communications	50,555	45,260	56,635	56,635	56,635
230	Transportation and Training	542	3,680	5,030	5,030	5,030
240	Insurance	0	0	0	0	0
250	Professional Services	15,719	16,360	16,360	16,360	16,360
260	Data Processing	105,184	113,880	115,515	113,427	113,427
270	Equipment Charges	5,927	5,590	6,090	6,090	6,090
280	Buildings and Grounds Charges	0	0	0	0	0
290	Other Contractuals	38,021	36,370	38,385	38,385	38,385
Subtotal Contractuals		215,948	221,140	238,015	235,927	235,927
310	Office Supplies	9,804	12,570	12,570	12,570	12,570
320	Clothing and Towels	0	0	0	0	0
330	Chemicals	0	0	0	0	0
340	Equipment Parts and Supplies	125	4,600	4,600	4,600	4,600
350	Materials	0	0	0	0	0
370	Building Parts and Materials	0	0	0	0	0
380	Non-capitalizable Equipment	2,689	0	0	0	0
390	Other Commodities	68	0	0	0	0
Subtotal Commodities		12,686	17,170	17,170	17,170	17,170
410	Land	0	0	0	0	0
420	Buildings	0	0	0	0	0
430	Improvements Other Than Bldgs.	0	0	0	0	0
440	Office Equipment	0	0	0	0	0
450	Vehicular Equipment	0	0	0	0	0
460	Operating Equipment	0	0	0	0	0
Subtotal Capital Outlay		0	0	0	0	0
510	Interfund Transfers	0	0	0	0	0
520	Debt Service	0	0	0	0	0
530	Other Non-operating Expenses	0	0	0	0	0
540	Inventory Accounts	0	0	0	0	0
550	Projects Closing Entries	0	0	0	0	0
Subtotal Other		0	0	0	0	0
TOTAL		966,899	1,040,590	1,106,802	1,080,926	1,100,903

CITY OF WICHITA 2009/2010 ANNUAL BUDGET

DEPARTMENT	03 FINANCE
FUND	100 GENERAL FUND
SERVICE	060401 TREASURY
GOAL	6 INTERNAL PERSPECTIVE

POSITION TITLE	2007	2008	2009	RANGE	2008 ADOPTED	2008 REVISED	2009 ADOPTED	2010 APPROVED
City Treasurer*	1	1	1	D63	92,300	97,780	97,780	97,780
Senior Fiscal Analyst	1	1	1	C43	71,390	73,536	73,536	73,536
Fiscal Analyst	1	1	1	C41	49,100	52,039	52,039	52,039
Associate Accountant	1	1	1	623	40,430	41,232	43,953	45,052
Account Clerk III	2	2	2	621	75,940	77,440	81,442	82,370
Account Clerk II	2	2	2	619	60,840	67,411	71,860	73,540
Account Clerk I	1	1	1	617	25,250	25,701	27,397	28,082
Customer Service Clerk I	8	8	8	617	226,840	225,139	239,076	244,129
Subtotal	17	17	17		642,090	660,276	687,083	696,527
Other Regular Salaries					3,200	3,636	4,000	4,400
Total Regular Salaries					645,290	663,912	691,082	700,927
Customer Service Clerk I (PT-50%)	1	1	1	617	11,960	12,840	13,690	14,030
Customer Service Clerk I (PT-75%)	1	1	1	617	17,940	19,280	20,550	21,060
Total Special Salaries	2	2	2		29,900	32,114	34,234	35,090
TOTAL AUTHORIZED POSITIONS	19	19	19					

* The Treasurer position is reimbursed 20% from Pension funds.

CITY OF WICHITA 2009/2010 ANNUAL BUDGET

DEPARTMENT	03 FINANCE
FUND	100 GENERAL FUND
SERVICE	020102 DEBT MANAGEMENT
GOAL	2 ECONOMIC VITALITY

		2007 ACTUAL	2008 ADOPTED	2008 REVISED	2009 ADOPTED	2010 APPROVED
110	Regular Salaries	238,687	263,370	229,673	238,814	241,433
120	Special Salaries	-40	0	0	0	0
130	Overtime	0	0	0	0	0
140	Employee Benefits	69,027	78,580	60,813	66,188	69,822
150	Shrinkage	0	0	0	-28,767	-29,295
Subtotal Salaries and Benefits		307,674	341,950	290,485	276,236	281,960
210	Utilities	0	0	0	0	0
220	Communications	2,614	4,330	4,570	4,762	4,762
230	Transportation and Training	0	0	2,245	1,700	1,700
240	Insurance	0	0	0	0	0
250	Professional Services	4,152	60	60	60	60
260	Data Processing	16,005	16,770	15,570	15,270	15,270
270	Equipment Charges	0	110	110	110	110
280	Buildings and Grounds Charges	0	0	0	0	0
290	Other Contractuals	2,983	5,530	5,530	6,430	6,430
Subtotal Contractuals		25,754	26,800	28,085	28,332	28,332
310	Office Supplies	0	1,100	1,100	1,100	1,100
320	Clothing and Towels	0	0	0	0	0
330	Chemicals	0	0	0	0	0
340	Equipment Parts and Supplies	0	0	0	0	0
350	Materials	0	0	0	0	0
370	Building Parts and Materials	0	0	0	0	0
380	Non-capitalizable Equipment	0	390	390	390	390
390	Other Commodities	64	0	0	0	0
Subtotal Commodities		64	1,490	1,490	1,490	1,490
410	Land	0	0	0	0	0
420	Buildings	0	0	0	0	0
430	Improvements Other Than Bldgs.	0	0	0	0	0
440	Office Equipment	0	0	0	0	0
450	Vehicular Equipment	0	0	0	0	0
460	Operating Equipment	0	0	0	0	0
Subtotal Capital Outlay		0	0	0	0	0
510	Interfund Transfers	0	0	24,360	24,760	25,110
520	Debt Service	0	0	0	0	0
530	Other Non-operating Expenses	0	0	0	0	0
540	Inventory Accounts	0	0	0	0	0
550	Projects Closing Entries	0	0	0	0	0
Subtotal Other		0	0	24,360	24,760	25,110
TOTAL		333,492	370,240	344,420	330,818	336,892

CITY OF WICHITA 2009/2010 ANNUAL BUDGET

DEPARTMENT	03 FINANCE
FUND	100 GENERAL FUND
SERVICE	020102 DEBT MANAGEMENT
GOAL	2 ECONOMIC VITALITY

POSITION TITLE	2007	2008	2009	RANGE	2008 ADOPTED	2008 REVISED	2009 ADOPTED	2010 APPROVED
Senior Budget Analyst	1	1	1	C43	59,420	62,824	62,824	62,824
Administrative Aide II	1	1	1	623	45,970	33,299	35,496	36,384
Account Clerk II	1	1	1	619	38,120	38,869	40,424	40,424
Clerk III	3	3	3	617	98,140	92,832	98,036	99,564
Subtotal	6	6	6		241,650	227,825	236,781	239,197
Other Regular Salaries					21,720	1,848	2,033	2,236
Total Regular Salaries					263,370	229,673	238,814	241,433
TOTAL AUTHORIZED POSITIONS	6	6	6					



The Keeper of the Plains sculpture raises his face toward the sky and lifts his arms in supplication to the Great Spirit.

THE KEEPER OF THE PLAINS...

A symbol of Wichita and Sedgwick County, this majestic 44-foot sculpture was designed by Blackbear Bosin (1921-1980), a Kiowa-Comanche and internationally recognized artist, muralist and designer. On May 18, 1974 a ceremony took place to dedicate the Keeper, which was designated as a Wichita Bicentennial project. The project was rededicated to the community on the 33rd anniversary of that Bicentennial project date. The 5-ton sculpture was placed at the confluence of the little and big Arkansas Rivers, which is considered a sacred site by Native Americans and was home to the Wichita tribe for many years.

A 2006 project to elevate the sculpture on a 30-foot rock promontory so it could be seen from farther away was completed and officially dedicated by Mayor Carl Brewer and the City Council on May 18, 2007.

CITY OF WICHITA 2009/2010 ANNUAL BUDGET

MULTI-YEAR FUND OVERVIEW - STATIONERY STORES	FUND: 615
---	------------------

	2007 ACTUAL	2008 ADOPTED	2008 REVISED	2009 ADOPTED	2010 APPROVED
Revenues:					
Charges for Services	826,078	940,000	950,000	950,000	950,000
Other Revenue	35,001	35,000	35,000	35,000	35,000
Total Budgeted Revenues	861,079	975,000	985,000	985,000	985,000
Expenditures					
Salaries and Benefits	63,092	63,430	67,114	67,495	67,594
Contractuals	38,063	110,540	25,477	25,861	26,581
Commodities	2,382	3,130	3,130	3,130	3,130
Capital Outlay	37,025	0	0	0	0
Other	764,856	800,000	900,000	1,200,000	900,000
Total Budgeted Expenditures	905,418	977,100	995,721	1,296,486	997,305
Budgeted Income (Loss)	(44,339)	(2,100)	(10,721)	(311,486)	(12,305)
Cash Balance - January 1					
Cash Balance - January 1	418,381	416,981	376,277	365,556	54,070
<i>Changes in assets and liabilities</i>	2,235	0	0	0	0
<i>Reserve for equipment replacement</i>	0	350,000	0	0	0
Cash Balance - December 31	376,277	64,881	365,556	54,070	41,765
Budgeted Other Revenue Detail:					
Transfer in - IT/IS	35,001	35,000	35,000	35,000	35,000
TOTAL OTHER REVENUE	35,001	35,000	35,000	35,000	35,000
Budgeted Contractual Detail:					
Administrative Charge	4,450	4,740	5,590	5,590	5,590
Other Contractuals	33,613	105,800	19,887	20,271	20,991
TOTAL CONTRACTUAL EXPENDITURES	38,063	110,540	25,477	25,861	26,581
Budgeted Other Detail:					
Reserve for Equipment Replacement	0	0	0	300,000	0
Cost of Goods Sold	764,855	800,000	900,000	900,000	900,000
TOTAL OTHER EXPENDITURES	764,856	800,000	900,000	1,200,000	900,000

CITY OF WICHITA 2009/2010 ANNUAL BUDGET

DEPARTMENT	03 FINANCE
FUND	615 STATIONERY STORES FUND
SERVICE	060405 STATIONERY STORES
GOAL	6 INTERNAL PERSPECTIVE

		2007 ACTUAL	2008 ADOPTED	2008 REVISED	2009 ADOPTED	2010 APPROVED
110	Regular Salaries	56,035	55,910	59,194	59,284	59,383
120	Special Salaries	0	0	0	0	0
130	Overtime	0	0	0	0	0
140	Employee Benefits	7,057	7,520	7,920	8,211	8,211
150	Shrinkage	0	0	0	0	0
Subtotal Salaries and Benefits		63,092	63,430	67,114	67,495	67,594
210	Utilities	0	0	0	0	0
220	Communications	801	940	940	940	940
230	Transportation and Training	143	1,560	4,655	4,695	4,915
240	Insurance	0	0	0	0	0
250	Professional Services	175	1,820	1,820	1,820	1,820
260	Data Processing	3,289	4,040	4,032	3,876	3,876
270	Equipment Charges	6,343	6,440	7,440	7,940	8,440
280	Buildings and Grounds Charges	0	0	0	0	0
290	Other Contractuals	27,312	95,740	6,590	6,590	6,590
Subtotal Contractuals		38,063	110,540	25,477	25,861	26,581
310	Office Supplies	1,165	3,130	3,130	3,130	3,130
320	Clothing and Towels	0	0	0	0	0
330	Chemicals	0	0	0	0	0
340	Equipment Parts and Supplies	0	0	0	0	0
350	Materials	0	0	0	0	0
370	Building Parts and Materials	0	0	0	0	0
380	Non-capitalizable Equipment	893	0	0	0	0
390	Other Commodities	323	0	0	0	0
Subtotal Commodities		2,382	3,130	3,130	3,130	3,130
410	Land	0	0	0	0	0
420	Buildings	0	0	0	0	0
430	Improvements Other Than Bldgs.	0	0	0	0	0
440	Office Equipment	37,025	0	0	0	0
450	Vehicular Equipment	0	0	0	0	0
460	Operating Equipment	0	0	0	0	0
Subtotal Capital Outlay		37,025	0	0	0	0
510	Interfund Transfers	0	0	0	0	0
520	Debt Service	0	0	0	0	0
530	Other Non-operating Expenses	0	0	0	300,000	0
540	Inventory Accounts	764,856	800,000	900,000	900,000	900,000
550	Projects Closing Entries	0	0	0	0	0
Subtotal Other		764,856	800,000	900,000	1,200,000	900,000
TOTAL		905,418	977,100	995,721	1,296,486	997,305

CITY OF WICHITA 2009/2010 ANNUAL BUDGET

DEPARTMENT	03 FINANCE
FUND	615 STATIONERY STORES FUND
SERVICE	060405 STATIONERY STORES
GOAL	6 INTERNAL PERSPECTIVE

POSITION TITLE	2007	2008	2009	RANGE	2008 ADOPTED	2008 REVISED	2009 ADOPTED	2010 APPROVED
Buyer	1	1	1	C41	54,950	58,294	58,294	58,294
Subtotal	1	1	1		54,950	58,294	58,294	58,294
Other Regular Salaries					960	900	990	1,089
Total Regular Salaries					55,910	59,194	59,284	59,383
TOTAL AUTHORIZED POSITIONS	1	1	1					

CITY OF WICHITA 2009/2010 ANNUAL BUDGET

MULTI-YEAR FUND OVERVIEW - EAST BANK TIF					FUND: 255
	2007 ACTUAL	2008 ADOPTED	2008 REVISED	2009 ADOPTED	2010 APPROVED
Revenues:					
Property Taxes	863,181	1,029,570	1,250,000	2,113,650	2,210,350
Rental Income	51,000	51,000	51,000	51,000	51,000
Other Revenue	133,060	133,060	259,260	338,180	353,660
Interest Earnings	40,900	40,000	40,000	40,000	40,000
Total Budgeted Revenues	1,088,141	1,253,630	1,600,260	2,542,830	2,655,010
Expenditures					
Other	969,690	1,795,990	1,945,990	2,506,020	2,732,450
Total Budgeted Expenditures	969,690	1,795,990	1,945,990	2,506,020	2,732,450
Budgeted income (Loss)	118,451	(542,360)	(345,730)	36,810	(77,440)
Fund Balance January 1					
	278,969	580,509	397,421	51,691	88,501
Fund Balance December 31					
	397,421	38,149	51,691	88,501	11,061
Bond Series 950 Debt Service					
	639,690	695,990	695,990	802,865	863,063
Bond Series 959 Debt Service					
	0	0	488,344	463,736	456,236
Bond Series 960 Debt Service					
	0	0	714,524	687,125	683,975
Transfer Over/(Under) Debt Service Req.					
	330,000	1,100,000	47,132	552,294	585,306
Cumulative Surplus/(Deficit)					
	(1,184,732)	(84,732)	(1,137,600)	(585,306)	0
Budgeted Oher Revenue Detail:					
State Payments	133,060	133,060	259,260	338,180	353,660
TOTAL OTHER REVENUE	133,060	133,060	259,260	338,180	353,660
Budgeted Expenditure Detail:					
Debt Service Payment	639,690	695,990	1,898,860	1,899,600	1,954,140
Debt Service Reimbursement	330,000	1,100,000	47,130	606,420	585,306
Future Projects	0	0	0	0	193,004
TOTAL OTHER EXPENDITURES	969,690	1,795,990	1,945,990	2,506,020	2,732,450

CITY OF WICHITA 2009/2010 ANNUAL BUDGET

MULTI-YEAR FUND OVERVIEW - OLD TOWN TIF DISTRICT	FUND: 255
---	------------------

	2007 ACTUAL	2008 ADOPTED	2008 REVISED	2009 ADOPTED	2010 APPROVED
Revenues:					
Property Taxes	522,770	801,490	615,000	633,450	652,450
Other Revenue	105,609	105,610	125,000	128,750	132,610
Interest Earnings	77,646	71,600	50,000	37,130	5,230
Total Budgeted Revenues	706,025	978,700	790,000	799,330	790,290

Expenditures:					
Commodities	37,965	25,000	25,000	25,000	25,000
Other	373,930	2,303,410	2,303,410	830,070	768,981
Total Budgeted Expenditures	411,895	2,328,410	2,328,410	855,070	793,981

Budgeted Income (Loss)	294,130	(1,349,710)	(1,538,410)	(55,740)	(3,691)
------------------------	---------	-------------	-------------	----------	---------

Fund Balance January 1	1,326,736	1,372,206	1,620,866	82,456	26,716
Fund Balance December 31	1,620,866	22,496	82,456	26,716	23,025

Bond Series 955 Debt Service	193,930	203,412	203,412	215,067	225,723
Transfer Over/(Under) Debt Service Req.	0	(2)	2	3	3
Cumulative Surplus/(Deficit)	2	(2)	4	7	10

<u>Budgeted Other Revenue Detail:</u>					
State Payments	105,609	105,610	125,000	128,750	132,610
TOTAL OTHER REVENUE	105,609	105,610	125,000	128,750	132,610

<u>Budgeted Other Expenditure Detail:</u>					
Debt Service Payment	193,930	203,410	203,410	215,070	225,720
Transfer - Boardwalk Project	180,000	0	0	0	0
Drainage Project	0	1,350,000	1,350,000	0	0
Future Projects	0	750,000	0	0	0
Light Fixture Replacement	0	0	308,000	0	0
Security Lighting	0	0	199,500	0	0
Landscape/Irrigation Improvement	0	0	0	500,000	0
Security Upgrades	0	0	80,000	115,000	0
Arts on the Corner	0	0	35,000	0	0
Electrical Upgrades	0	0	100,000	0	0
Historic Plaques	0	0	27,500	0	0
Garbage Enclosures	0	0	0	0	100,000
Pavement Rehabilitation	0	0	0	0	233,261
Crosswalk / Safety Improvements	0	0	0	0	210,000
TOTAL OTHER EXPENDITURES	373,930	2,303,410	2,303,410	830,070	768,981

CITY OF WICHITA 2009/2010 ANNUAL BUDGET

MULTI-YEAR FUND OVERVIEW - 21ST AND GROVE TIF	FUND: 255
--	------------------

	2007 ACTUAL	2008 ADOPTED	2008 REVISED	2009 ADOPTED	2010 APPROVED
Revenues:					
Property Taxes	169,105	122,790	155,230	175,960	178,650
Other Revenue	16,050	16,050	25,720	26,390	26,800
Interest Earnings	7,760	5,200	5,200	2,350	2,250
Total Budgeted Revenues	192,915	144,040	186,150	204,700	207,700
Expenditures:					
Other	196,000	153,180	242,000	200,000	214,050
Total Budgeted Expenditures	196,000	153,180	242,000	200,000	214,050
Budgeted Income (Loss)	(3,085)	(9,140)	(55,850)	4,700	(6,350)
Fund Balance January 1					
	62,688	9,728	59,603	3,753	8,453
Fund Balance December 31	59,603	588	3,753	8,453	2,103
Bond Series 952 Debt Service					
	130,360	131,175	131,180	131,730	132,050
Transfer Over/(Under) Debt Service Req.	65,640	22,005	110,820	68,270	82,000
Cumulative Surplus/(Deficit)	(648,529)	(626,544)	(537,709)	(469,439)	(387,439)
Budgeted Other Revenue Detail:					
State Payments	16,050	16,050	25,720	26,390	26,800
TOTAL OTHER REVENUE	16,050	16,050	25,720	26,390	26,800
Budgeted Other Expenditure Detail:					
Debt Service Payment	130,360	131,180	131,180	131,730	132,050
Debt Service Reimbursement	65,640	22,000	110,820	68,270	82,000
TOTAL OTHER EXPENDITURES	196,000	153,180	242,000	200,000	214,050

CITY OF WICHITA 2009/2010 ANNUAL BUDGET

MULTI-YEAR FUND OVERVIEW - CENTRAL AND HILLSIDE TIF					FUND: 255
	2007 ACTUAL	2008 ADOPTED	2008 REVISED	2009 ADOPTED	2010 APPROVED
Revenues:					
Property Taxes	854,778	916,580	0	0	0
Other Revenue	(808,780)	0	0	0	0
Interest Earnings	23,406	14,800	0	0	0
Total Budgeted Revenues	69,404	931,380	0	0	0
Expenditures:					
Other	71,732	979,000	0	0	0
Total Budgeted Expenditures	71,732	979,000	0	0	0
Budgeted Income (Loss)	(2,328)	(47,620)	0	0	0
Fund Balance January 1					
	2,328	47,808	0	0	0
Fund Balance December 31					
	0	188	0	0	0
Budgeted Other Revenue Detail:					
Reimbursements	(854,778)	0	0	0	0
Interfund Transfers	45,998	0	0	0	0
TOTAL OTHER REVENUE	(808,780)	0	0	0	0
Budgeted Other Expenditure Detail:					
Debt Service-Temporary Notes	0	979,000	0	0	0
Refund	71,732	0	0	0	0
TOTAL OTHER EXPENDITURES	(737,048)	979,000	0	0	0

CITY OF WICHITA 2009/2010 ANNUAL BUDGET

MULTI-YEAR FUND OVERVIEW - OLD TOWN CINEMA TIF	FUND: 255
---	------------------

	2007 ACTUAL	2008 ADOPTED	2008 REVISED	2009 ADOPTED	2010 APPROVED
Revenues:					
Property Taxes	272,949	332,160	332,160	342,130	352,390
Rental Income	0	45,760	0	0	0
Other Revenue	37,000	0	37,000	37,000	37,000
Interest Earnings	7,934	3,200	560	500	530
Total Budgeted Revenues	317,883	381,120	369,720	379,630	389,920
Expenditures:					
Other	319,537	381,000	370,000	365,000	400,000
Total Budgeted Expenditures	319,537	381,000	370,000	365,000	400,000
Budgeted Income (Loss)	(1,654)	120	(280)	14,630	(10,080)
Fund Balance January 1					
	2,497	557	843	563	15,193
Fund Balance December 31					
	843	677	563	15,193	5,113
Bond Series 957 Debt Service					
	433,906	435,206	435,206	441,956	449,081
Transfer Over/(Under) Debt Service Req.					
	(114,369)	(54,206)	(65,206)	(76,956)	(49,081)
Cumulative Surplus/(Deficit)					
	(204,889)	(235,632)	(270,095)	(347,051)	(396,132)
Budgeted Other Revenue Detail:					
Parking Revenue	37,000	0	37,000	37,000	37,000
TOTAL OTHER REVENUE	37,000	0	37,000	37,000	37,000
Budgeted Other Expenditure Detail:					
Debt Service Payment	319,537	381,000	370,000	365,000	400,000
TOTAL OTHER EXPENDITURES	319,537	381,000	370,000	365,000	400,000

CITY OF WICHITA 2009/2010 ANNUAL BUDGET

MULTI-YEAR FUND OVERVIEW - MAIN & MURDOCK TIF					FUND: 255
	2007 ACTUAL	2008 ADOPTED	2008 REVISED	2009 ADOPTED	2010 APPROVED
Revenues:					
Property Taxes	7,475	0	0	0	0
Interest Earnings	1,179	0	0	0	0
Total Budgeted Revenues	8,654	0	0	0	0
Expenditures:					
Other	0	0	33,555	0	0
Total Budgeted Expenditures	0	0	33,555	0	0
Budgeted Income (Loss)	8,654	0	(33,555)	0	0
Fund Balance January 1	24,901	0	33,555	0	0
Fund Balance December 31	33,555	0	0	0	0
<u>Budgeted Other Expenditure Detail:</u>					
Reimbursement	0	0	33,555	0	0
TOTAL OTHER EXPENDITURES	0	0	33,555	0	0

CITY OF WICHITA 2009/2010 ANNUAL BUDGET

MULTI-YEAR FUND OVERVIEW - SELF SUPPORTING MUNICIPAL IMPROVEMENT DIST	FUND: 260
--	------------------

	2007 ACTUAL	2008 ADOPTED	2008 REVISED	2009 ADOPTED	2010 APPROVED
Revenues:					
Property Taxes	570,037	609,760	591,056	608,563	623,319
Motor Vehicle Taxes	26,903	25,980	27,845	28,819	29,828
Other Taxes	0	0	27,666	3,000	3,000
Total Budgeted Revenues	596,940	635,740	646,567	640,382	656,147
Expenditures:					
Salaries and Benefits	0	0	0	0	0
Contractuals	611,561	635,740	635,740	637,487	656,612
Commodities	0	0	0	0	0
Capital Outlay	0	0	0	0	0
Other	0	0	0	0	0
Total Budgeted Expenditures	611,561	635,740	635,740	637,487	656,612
Budgeted Income (Loss)	(14,621)	0	10,827	2,895	(464)
Fund Balance - January 1	14,621	7,421	0	10,827	13,722
Fund Balance - December 31	0	7,421	10,827	13,722	13,258
Budgeted Property Tax Revenue Detail:					
Property Tax Revenue	563,325	591,090	583,556	601,063	615,819
Delinquent Property Tax Collections	6,712	18,670	7,500	7,500	7,500
Total Property Tax Revenues	570,037	609,760	591,056	608,563	623,319
Assessed Valuation	100,112,319	103,924,000	103,784,884	104,675,180	110,105,383
Mill Levy	5.987	5.987	5.995	5.950	5.950
Estimated Property Tax Collections (Gross)	563,325	622,193	622,200	622,817	655,127
Delinquency Allowance	0	(12,343)	(38,644)	(24,647)	(39,308)
Prior Year Delinquency Collections	6,712	18,760	7,500	7,500	7,500
Estimated Property Tax Collections (Net)	570,037	591,090	583,556	598,170	615,819

CITY OF WICHITA 2009/2010 ANNUAL BUDGET

MULTI-YEAR FUND OVERVIEW - SELF INSURANCE FUND	FUND: 620
---	------------------

	2007 ACTUAL	2008 ADOPTED	2008 REVISED	2009 ADOPTED	2010 APPROVED
Revenues:					
Transfers In	1,824,120	325,670	325,670	325,670	325,670
Other Revenue	33,694,085	39,348,010	38,518,710	40,859,155	44,607,962
Interest Earnings	1,206,918	550,000	827,540	862,113	897,468
Total Budgeted Revenues	36,725,123	40,223,680	39,671,920	42,046,938	45,831,100
Expenditures:					
Salaries and Wages	1,442,876	1,831,080	1,686,883	1,692,925	1,695,898
Contractuals	32,044,107	37,268,970	34,368,846	37,347,652	40,527,523
Commodities	59,616	102,900	103,927	102,900	102,900
Capital Outlay	0	10,000	10,000	10,000	10,000
Other	2,937,136	1,083,160	4,013,390	4,213,680	4,213,790
Total Budgeted Expenditures	36,483,735	40,296,110	40,183,046	43,367,157	46,550,111
Budgeted Income (Loss)	241,388	(72,430)	(511,126)	(1,320,219)	(719,011)
Fund Balance - January 1	17,192,371	212,235	17,433,759	16,922,633	15,602,414
<i>Changes in Assets and Liabilities</i>					
Fund Balance - December 31	17,433,759	139,805	16,922,633	15,602,414	14,883,403
Budgeted Transfer In Revenue Detail:					
Transfer In - Water Utility - Safety Officer	74,120	75,670	75,670	75,670	75,670
Transfer In - General Fund - Tort Liability	250,000	250,000	250,000	250,000	250,000
Transfer In - Life Insurance Sub-Fund	1,500,000	0	0	0	0
TOTAL Transfers In Revenue	1,824,120	325,670	325,670	325,670	325,670
Budgeted Contractual Expenditure Detail:					
Administrative Charges - Health Insurance	11,190	11,190	2,530	2,530	2,530
Administrative Charges - Life Insurance	2,810	2,810	320	320	320
Administrative Charges - Workers Comp	890	890	70,830	70,830	70,830
Administrative Charges - Risk Management	0	120	11,480	11,480	11,480
Health Insurance Costs	23,896,245	32,044,890	27,298,280	30,028,108	33,030,919
Other Contractuals	8,132,972	5,209,070	6,985,406	7,234,384	7,411,444
TOTAL Contractual Expenditures	32,044,107	37,268,970	34,368,846	37,347,652	40,527,523
Budgeted Other Expenditure Detail:					
Reserve - Adverse GL & Tort Claims		500,000	1,000,000	1,000,000	1,000,000
Reserve - Adverse Health Insurance Utilization	0	0	2,300,000	2,500,000	2,500,000
Transfer Out - Risk Management Position Reimb	0	0	53,180	53,410	53,410
Transfer Out - General Fund Position Reimb	32,000	0	35,920	35,800	35,910
Transfer Out - Work Comp Position Reimb	0	0	41,130	41,310	41,310
Transfer Out - Health Insurance Subfund	1,500,000	0	0	0	0
Tort Claims	905,136	583,160	583,160	583,160	583,160
Transfer Out - General Fund	500,000	0	0	0	0
TOTAL Other Expenditures	2,937,136	1,083,160	4,013,390	4,213,680	4,213,790

CITY OF WICHITA 2009/2010 ANNUAL BUDGET

MULTI-YEAR FUND OVERVIEW - SELF INSURANCE FUND / SUB FUND DETAIL FUND: 620

	2007 ACTUAL	2008 ADOPTED	2008 REVISED	2009 ADOPTED	2010 APPROVED
Group Life Insurance Sub-Fund Detail					
<u>Revenues</u>					
Employee Contribution	519,148	405,000	735,057	795,515	825,144
City Contribution	201,287	230,000	230,000	236,743	239,114
Interest Earnings	98,020	100,000	70,000	85,000	100,000
ST: Revenues	818,455	735,000	1,035,057	1,117,258	1,164,258
<u>Expenditures</u>					
Other Expenditures	886,963	957,600	1,035,057	1,117,258	1,164,258
Transfer Out - Health Insurance Subfund	1,500,000	0	0	0	0
ST: Expenditures	2,386,963	957,600	1,035,057	1,117,258	1,164,258
Budgeted Income (loss)	(1,568,508)	(222,600)	0	0	0
Net Assets January 1	2,501,640	2,270,290	2,270,290	2,270,290	2,270,290
Net Assets December 31	933,132	2,047,690	2,270,290	2,270,290	2,270,290
Group Health Insurance Sub-Fund Detail					
<u>Revenues</u>					
Employee Contribution	6,610,360	7,784,390	7,206,509	7,627,665	8,330,859
City Contribution	20,532,360	25,087,510	22,026,034	23,710,658	26,523,435
Other Revenue	1,501,262	0	2,300,000	2,500,000	2,500,000
Interest Earnings	184,639	50,000	197,250	207,113	217,468
ST: Revenues	28,828,621	32,921,900	31,729,793	34,045,436	37,571,762
<u>Expenditures</u>					
Other Expenditures	25,552,510	32,310,210	29,400,065	31,977,088	35,031,899
Reserve - Adverse Claims Experience	0	0	2,300,000	2,500,000	2,500,000
ST: Expenditures	25,552,510	32,310,210	31,700,065	34,477,088	37,531,899
Budgeted Income (Loss)	3,276,111	611,690	29,728	(431,652)	39,863
Net Assets January 1	3,294,695	2,270,290	6,570,806	6,600,534	6,168,882
Net Assets December 31	6,570,806	2,881,980	6,600,534	6,168,882	6,208,745
Workers Compensation Insurance Sub-Fund Detail					
<u>Revenues</u>					
City Contribution	3,104,963	3,549,270	3,349,270	3,516,734	3,692,570
Other Revenue	131,308	400,000	130,000	130,000	130,000
Interest Earnings	410,292	250,000	410,290	420,000	430,000
ST: Revenues	3,646,563	4,199,270	3,889,560	4,066,734	4,252,570
<u>Expenditures</u>					
ST: Expenditures	4,922,274	4,173,130	4,201,503	4,278,398	4,355,086
Budgeted Income (Loss)	(1,275,711)	26,140	(311,943)	(211,664)	(102,516)
Net Assets January 1	2,871,407	2,270,290	1,595,696	1,283,753	1,072,089
Net Assets December 31	1,595,696	2,296,430	1,283,753	1,072,089	969,573
Risk Management Sub-Fund Detail					
<u>Revenues</u>					
City Contribution	2,374,653	1,680,240	1,880,240	1,880,240	1,880,240
Other Revenue - Water Utility - Tort Liability	119,000	119,000	119,000	119,000	119,000
Other Revenue - Sewer Utility - Tort Liability	92,600	92,600	92,600	92,600	92,600
Transfer In - General Fund - Tort Liability	250,000	250,000	250,000	250,000	250,000
Transfer In - Water Utility - Safety Officer	74,120	75,670	75,670	75,670	75,670
Interest Earnings	521,110	150,000	150,000	150,000	150,000
ST: Revenues	3,431,483	2,367,510	2,567,510	2,567,510	2,567,510
<u>Expenditures</u>					
ST: Expenditures	3,051,987	2,855,170	3,446,422	3,494,413	3,498,868
Budgeted Income (Loss)	379,496	(487,660)	(878,912)	(926,903)	(931,358)
Net Assets January 1	8,524,628	7,462,618	8,870,056	7,956,994	6,995,941
Depreciation	(34,068)	(34,150)	(34,150)	(34,150)	(34,150)
Net Assets December 31	8,870,056	6,940,808	7,956,994	6,995,941	6,030,433

CITY OF WICHITA 2009/2010 ANNUAL BUDGET

FUND **620 - SELF INSURANCE**
DEPARTMENT **03/04 - FINANCE / LAW**

COMBINED DETAIL SUMMARY

		2007 ACTUAL	2008 ADOPTED	2008 REVISED	2009 ADOPTED	2010 APPROVED
110	Regular Salaries	325,868	321,500	327,972	330,730	332,104
120	Special Salaries	1,200	1,290	1,560	1,560	1,560
130	Overtime	0	0	0	0	0
140	Employee Benefits	1,115,808	1,508,290	1,357,351	1,360,634	1,362,233
150	Shrinkage	0	0	0	0	0
	Subtotal Salaries and Benefits	1,442,876	1,831,080	1,686,883	1,692,925	1,695,898
210	Utilities	0	0	0	0	0
220	Communications	7,411	6,810	9,750	9,850	9,950
230	Transportation and Training	14,111	16,290	25,585	23,395	25,865
240	Insurance	29,233,429	34,440,330	31,185,117	34,109,366	37,223,177
250	Professional Services	2,672,695	2,675,530	2,901,540	2,963,240	3,026,730
260	Data Processing	24,189	33,500	69,174	63,846	63,846
270	Equipment Charges	8,280	8,530	9,130	9,130	9,130
280	Buildings and Grounds Charges	0	0	0	0	0
290	Other Contractuals	83,993	87,980	168,550	168,825	168,825
	Subtotal Contractuals	32,044,107	37,268,970	34,368,846	37,347,652	40,527,523
310	Office Supplies	1,708	8,400	8,400	8,400	8,400
320	Clothing and Towels	351	0	0	0	0
330	Chemicals	0	0	0	0	0
340	Equipment Parts and Supplies	8,385	0	0	0	0
350	Materials	0	0	0	0	0
370	Building Parts and Materials	0	0	0	0	0
380	Non-capitalizable Equipment	11,346	0	1,027	0	0
390	Other Commodities	37,826	94,500	94,500	94,500	94,500
	Subtotal Commodities	59,616	102,900	103,927	102,900	102,900
410	Land	0	0	0	0	0
420	Buildings	0	0	0	0	0
430	Improvements Other Than Bldgs.	0	0	0	0	0
440	Office Equipment	0	10,000	10,000	10,000	10,000
450	Vehicular Equipment	0	0	0	0	0
460	Operating Equipment	0	0	0	0	0
	Subtotal Capital Outlay	0	10,000	10,000	10,000	10,000
510	Interfund Transfers	2,032,000	0	130,230	130,520	130,630
520	Debt Service	0	0	0	0	0
530	Other Non-operating Expenses	905,136	1,083,160	3,883,160	4,083,160	4,083,160
540	Inventory Accounts	0	0	0	0	0
550	Projects Closing Entries	0	0	0	0	0
	Subtotal Other	2,937,136	1,083,160	4,013,390	4,213,680	4,213,790
	TOTAL	36,483,735	40,296,110	40,183,046	43,367,157	46,550,110

CITY OF WICHITA 2009/2010 ANNUAL BUDGET

DEPARTMENT	03 FINANCE
FUND	625 SELF INSURANCE FUND
SERVICE	0604071 GROUP LIFE
GOAL	6 INTERNAL PERSPECTIVE

		2007 ACTUAL	2008 ADOPTED	2008 REVISED	2009 ADOPTED	2010 APPROVED
110	Regular Salaries	0	0	0	0	0
120	Special Salaries	0	0	0	0	0
130	Overtime	0	0	0	0	0
140	Employee Benefits	0	0	0	0	0
150	Shrinkage	0	0	0	0	0
Subtotal Salaries and Benefits		0	0	0	0	0
210	Utilities	0	0	0	0	0
220	Communications	0	3,000	3,000	3,000	3,000
230	Transportation and Training	0	0	0	0	0
240	Insurance	884,153	945,040	1,024,987	1,107,188	1,154,188
250	Professional Services	0	1,000	1,000	1,000	1,000
260	Data Processing	0	0	0	0	0
270	Equipment Charges	0	0	0	0	0
280	Buildings and Grounds Charges	0	0	0	0	0
290	Other Contractuals	2,810	8,560	6,070	6,070	6,070
Subtotal Contractuals		886,963	957,600	1,035,057	1,117,258	1,164,258
310	Office Supplies	0	0	0	0	0
320	Clothing and Towels	0	0	0	0	0
330	Chemicals	0	0	0	0	0
340	Equipment Parts and Supplies	0	0	0	0	0
350	Materials	0	0	0	0	0
370	Building Parts and Materials	0	0	0	0	0
380	Non-capitalizable Equipment	0	0	0	0	0
390	Other Commodities	0	0	0	0	0
Subtotal Commodities		0	0	0	0	0
410	Land	0	0	0	0	0
420	Buildings	0	0	0	0	0
430	Improvements Other Than Bldgs.	0	0	0	0	0
440	Office Equipment	0	0	0	0	0
450	Vehicular Equipment	0	0	0	0	0
460	Operating Equipment	0	0	0	0	0
Subtotal Capital Outlay		0	0	0	0	0
510	Interfund Transfers	1,500,000	0	0	0	0
520	Debt Service	0	0	0	0	0
530	Other Non-operating Expenses	0	0	0	0	0
540	Inventory Accounts	0	0	0	0	0
550	Projects Closing Entries	0	0	0	0	0
Subtotal Other		1,500,000	0	0	0	0
TOTAL		2,386,963	957,600	1,035,057	1,117,258	1,164,258

CITY OF WICHITA 2009/2010 ANNUAL BUDGET

DEPARTMENT	03 FINANCE
FUND	625 SELF INSURANCE FUND
SERVICE	0604072 GROUP HEALTH
GOAL	6 INTERNAL PERSPECTIVE

		2007 ACTUAL	2008 ADOPTED	2008 REVISED	2009 ADOPTED	2010 APPROVED
110	Regular Salaries	14,070	0	0	0	0
120	Special Salaries	0	0	0	0	0
130	Overtime	0	0	0	0	0
140	Employee Benefits	1,814	0	0	0	0
150	Shrinkage	0	0	0	0	0
Subtotal Salaries and Benefits		15,884	0	0	0	0
210	Utilities	0	0	0	0	0
220	Communications	2,978	0	2,300	2,300	2,300
230	Transportation and Training	75	2,440	2,440	2,440	2,440
240	Insurance	25,036,284	32,044,890	28,655,780	31,435,608	34,488,419
250	Professional Services	425,028	195,520	418,800	420,800	422,800
260	Data Processing	1,518	1,370	4,008	0	0
270	Equipment Charges	0	0	0	0	0
280	Buildings and Grounds Charges	0	0	0	0	0
290	Other Contractuals	69,716	65,990	62,530	62,530	62,530
Subtotal Contractuals		25,535,599	32,310,210	29,145,858	31,923,678	34,978,489
310	Office Supplies	0	0	0	0	0
320	Clothing and Towels	0	0	0	0	0
330	Chemicals	0	0	0	0	0
340	Equipment Parts and Supplies	0	0	0	0	0
350	Materials	0	0	0	0	0
370	Building Parts and Materials	0	0	0	0	0
380	Non-capitalizable Equipment	1,027	0	1,027	0	0
390	Other Commodities	0	0	0	0	0
Subtotal Commodities		1,027	0	1,027	0	0
410	Land	0	0	0	0	0
420	Buildings	0	0	0	0	0
430	Improvements Other Than Bldgs.	0	0	0	0	0
440	Office Equipment	0	0	0	0	0
450	Vehicular Equipment	0	0	0	0	0
460	Operating Equipment	0	0	0	0	0
Subtotal Capital Outlay		0	0	0	0	0
510	Interfund Transfers	0	0	53,180	53,410	53,410
520	Debt Service	0	0	0	0	0
530	Other Non-operating Expenses	0	0	2,300,000	2,500,000	2,500,000
540	Inventory Accounts	0	0	0	0	0
550	Projects Closing Entries	0	0	0	0	0
Subtotal Other		0	0	2,353,180	2,553,410	2,553,410
TOTAL		25,552,510	32,310,210	31,500,065	34,477,088	37,531,899

CITY OF WICHITA 2009/2010 ANNUAL BUDGET

DEPARTMENT	03 FINANCE
FUND	625 SELF INSURANCE FUND
SERVICE	0604073 WORKERS COMPENSATION
GOAL	6 INTERNAL PERSPECTIVE

		2007 ACTUAL	2008 ADOPTED	2008 REVISED	2009 ADOPTED	2010 APPROVED
110	Regular Salaries	112,943	103,300	108,782	111,258	112,322
120	Special Salaries	0	0	0	0	0
130	Overtime	0	0	0	0	0
140	Employee Benefits	1,075,801	1,464,880	1,314,646	1,315,517	1,315,651
150	Shrinkage	0	0	0	0	0
Subtotal Salaries and Benefits		1,188,744	1,568,180	1,423,428	1,426,775	1,427,973
210	Utilities	0	0	0	0	0
220	Communications	772	1,480	1,530	1,530	1,530
230	Transportation and Training	2,763	4,220	4,785	6,045	6,045
240	Insurance	1,735,263	299,450	351,020	364,220	378,220
250	Professional Services	2,053,014	2,262,840	2,312,840	2,372,540	2,434,030
260	Data Processing	8,701	18,360	19,170	18,558	18,558
270	Equipment Charges	0	0	0	0	0
280	Buildings and Grounds Charges	0	0	0	0	0
290	Other Contractuals	2,549	2,600	72,730	72,730	72,730
Subtotal Contractuals		3,803,062	2,588,950	2,762,075	2,835,623	2,911,113
310	Office Supplies	456	6,000	6,000	6,000	6,000
320	Clothing and Towels	0	0	0	0	0
330	Chemicals	0	0	0	0	0
340	Equipment Parts and Supplies	0	0	0	0	0
350	Materials	0	0	0	0	0
370	Building Parts and Materials	0	0	0	0	0
380	Non-capitalizable Equipment	0	0	0	0	0
390	Other Commodities	12	0	0	0	0
Subtotal Commodities		468	6,000	6,000	6,000	6,000
410	Land	0	0	0	0	0
420	Buildings	0	0	0	0	0
430	Improvements Other Than Bldgs.	0	0	0	0	0
440	Office Equipment	0	10,000	10,000	10,000	10,000
450	Vehicular Equipment	0	0	0	0	0
460	Operating Equipment	0	0	0	0	0
Subtotal Capital Outlay		0	10,000	10,000	10,000	10,000
510	Interfund Transfers	0	0	0	0	0
520	Debt Service	0	0	0	0	0
530	Other Non-operating Expenses	0	0	0	0	0
540	Inventory Accounts	0	0	0	0	0
550	Projects Closing Entries	0	0	0	0	0
Subtotal Other		0	0	0	0	0
TOTAL		4,992,274	4,173,130	4,201,503	4,278,398	4,355,086

CITY OF WICHITA 2009/2010 ANNUAL BUDGET

DEPARTMENT	03 FINANCE
FUND	620 SELF INSURANCE FUND
SERVICE	0607073 WORKERS COMPENSATION
GOAL	6 INTERNAL PERSPECTIVE

POSITION TITLE	2007	2008	2009	RANGE	2008 ADOPTED	2008 REVISED	2009 ADOPTED	2010 APPROVED
Risk Management Specialist	1	1	1	C43	67,960	71,745	71,745	71,745
Account Clerk III	1	1	1	621	34,560	36,113	38,497	39,459
Subtotal	2	2	2		102,520	107,858	110,241	111,204
Other Regular Salaries					780	924	1,017	1,118
Total Regular Salaries					103,300	108,782	111,258	112,322
TOTAL AUTHORIZED POSITIONS	2	2	2					

CITY OF WICHITA 2009/2010 ANNUAL BUDGET

DEPARTMENT	03 FINANCE
FUND	625 SELF INSURANCE FUND
SERVICE	0604074 RISK MANAGEMENT
GOAL	6 INTERNAL PERSPECTIVE

		2007 ACTUAL	2008 ADOPTED	2008 REVISED	2009 ADOPTED	2010 APPROVED
110	Regular Salaries	70,361	89,880	93,863	94,049	94,254
120	Special Salaries	0	90	360	360	360
130	Overtime	0	0	0	0	0
140	Employee Benefits	8,756	12,080	12,496	12,956	12,956
150	Shrinkage	0	0	0	0	0
Subtotal Salaries and Benefits		79,117	102,050	106,719	107,365	107,570
210	Utilities	0	0	0	0	0
220	Communications	2,667	1,270	1,570	1,670	1,770
230	Transportation and Training	3,067	3,080	3,430	3,650	3,650
240	Insurance	1,577,299	1,150,520	1,152,900	1,201,920	1,201,920
250	Professional Services	80,755	162,610	64,410	64,410	64,410
260	Data Processing	9,218	5,950	34,380	34,152	34,152
270	Equipment Charges	0	1,400	1,400	1,400	1,400
280	Buildings and Grounds Charges	0	0	0	0	0
290	Other Contractuals	2,123	3,830	15,450	15,450	15,450
Subtotal Contractuals		1,675,128	1,328,660	1,273,540	1,322,652	1,322,752
310	Office Supplies	700	2,000	2,000	2,000	2,000
320	Clothing and Towels	0	0	0	0	0
330	Chemicals	0	0	0	0	0
340	Equipment Parts and Supplies	0	0	0	0	0
350	Materials	0	0	0	0	0
370	Building Parts and Materials	0	0	0	0	0
380	Non-capitalizable Equipment	0	0	0	0	0
390	Other Commodities	60	23,700	23,700	23,700	23,700
Subtotal Commodities		760	25,700	25,700	25,700	25,700
410	Land	0	0	0	0	0
420	Buildings	0	0	0	0	0
430	Improvements Other Than Bldgs.	0	0	0	0	0
440	Office Equipment	0	0	0	0	0
450	Vehicular Equipment	0	0	0	0	0
460	Operating Equipment	0	0	0	0	0
Subtotal Capital Outlay		0	0	0	0	0
510	Interfund Transfers	532,000	0	77,050	77,110	77,220
520	Debt Service	0	0	0	0	0
530	Other Non-operating Expenses	0	500,000	1,000,000	1,000,000	1,000,000
540	Inventory Accounts	0	0	0	0	0
550	Projects Closing Entries	0	0	0	0	0
Subtotal Other		532,000	500,000	1,077,050	1,077,110	1,077,220
TOTAL		2,287,004	1,956,410	2,483,009	2,532,827	2,533,242

CITY OF WICHITA 2009/2010 ANNUAL BUDGET

DEPARTMENT	03	FINANCE
FUND	620	SELF INSURANCE FUND
SERVICE	0607074	RISK MANAGEMENT
GOAL	6	INTERNAL PERSPECTIVE

POSITION TITLE	2007	2008	2009	RANGE	2008 ADOPTED	2008 REVISED	2009 ADOPTED	2010 APPROVED
Risk Manager*	1	1	1	C52	87,960	92,003	92,003	92,003
Subtotal	1	1	1		87,960	92,003	92,003	92,003
Other Regular Salaries					1,920	1,860	2,046	2,250
Total Regular Salaries					89,880	93,863	94,049	94,254
Total Special Salaries					90	360	360	360
TOTAL AUTHORIZED POSITIONS	1	1	1					

* Risk Management reimburses 25% of the Director of Finance
 * The Self Insurance Fund reimburses 50% of the Risk Manager

CITY OF WICHITA 2009/2010 ANNUAL BUDGET

DEPARTMENT	03 FINANCE
FUND	625 SELF INSURANCE FUND
SERVICE	0604075 SAFETY OFFICE
GOAL	6 INTERNAL PERSPECTIVE

		2007 ACTUAL	2008 ADOPTED	2008 REVISED	2009 ADOPTED	2010 APPROVED
110	Regular Salaries	128,494	128,320	125,327	125,423	125,529
120	Special Salaries	1,200	1,200	1,200	1,200	1,200
130	Overtime	0	0	0	0	0
140	Employee Benefits	29,437	31,330	30,209	32,161	33,626
150	Shrinkage	0	0	0	0	0
Subtotal Salaries and Benefits		159,131	160,850	156,736	158,784	160,355
210	Utilities	0	0	0	0	0
220	Communications	994	790	810	810	810
230	Transportation and Training	4,415	4,150	10,130	6,460	8,930
240	Insurance	430	430	430	430	430
250	Professional Services	0	2,630	2,630	2,630	2,630
260	Data Processing	4,752	5,570	7,128	7,032	7,032
270	Equipment Charges	8,280	6,530	6,530	6,530	6,530
280	Buildings and Grounds Charges	0	0	0	0	0
290	Other Contractuals	4,661	7,000	11,770	12,045	12,045
Subtotal Contractuals		23,532	27,100	39,428	35,937	38,407
310	Office Supplies	552	400	400	400	400
320	Clothing and Towels	351	0	0	0	0
330	Chemicals	0	0	0	0	0
340	Equipment Parts and Supplies	8,385	0	0	0	0
350	Materials	0	0	0	0	0
370	Building Parts and Materials	0	0	0	0	0
380	Non-capitalizable Equipment	10,319	0	0	0	0
390	Other Commodities	37,754	70,800	70,800	70,800	70,800
Subtotal Commodities		57,361	71,200	71,200	71,200	71,200
410	Land	0	0	0	0	0
420	Buildings	0	0	0	0	0
430	Improvements Other Than Bldgs.	0	0	0	0	0
440	Office Equipment	0	0	0	0	0
450	Vehicular Equipment	0	0	0	0	0
460	Operating Equipment	0	0	0	0	0
Subtotal Capital Outlay		0	0	0	0	0
510	Interfund Transfers	0	0	0	0	0
520	Debt Service	0	0	0	0	0
530	Other Non-operating Expenses	0	0	0	0	0
540	Inventory Accounts	0	0	0	0	0
550	Projects Closing Entries	0	0	0	0	0
Subtotal Other		0	0	0	0	0
TOTAL		240,024	259,150	267,364	265,921	269,962

CITY OF WICHITA 2009/2010 ANNUAL BUDGET

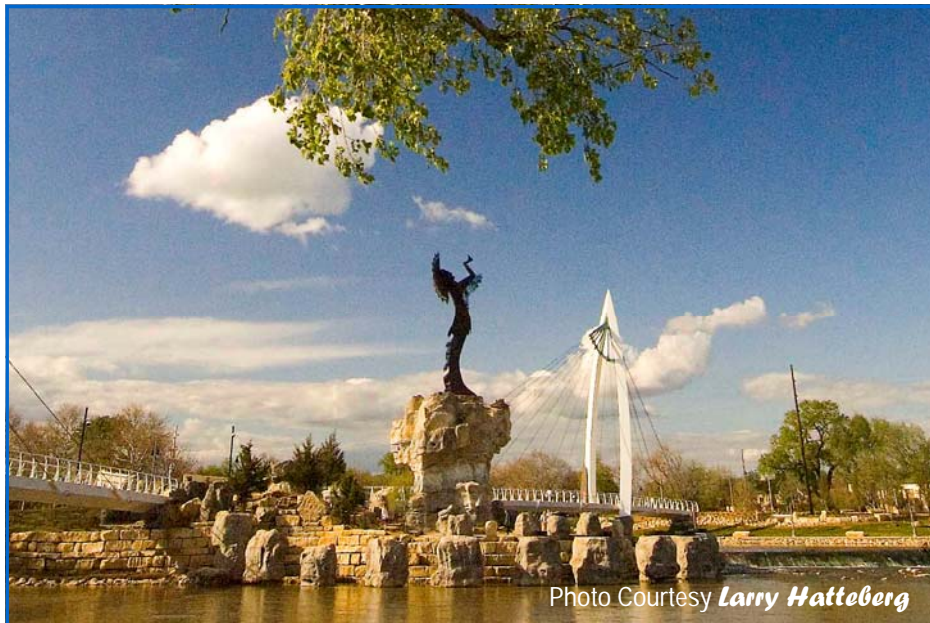
DEPARTMENT	03 FINANCE
FUND	620 SELF INSURANCE FUND
SERVICE	0607075 SAFETY OFFICE
GOAL	6 INTERNAL PERSPECTIVE

POSITION TITLE	2007	2008	2009	RANGE	2008 ADOPTED	2008 REVISED	2009 ADOPTED	2010 APPROVED
Senior Safety Coordinator	1	1	1	C43	68,350	71,807	71,807	71,807
Safety Coordinator	1	1	1	C42	58,790	52,560	52,560	52,560
Subtotal	2	2	2		127,140	124,367	124,367	124,367
Other Regular Salaries					1,180	960	1,055	1,161
Total Regular Salaries					128,320	125,327	125,423	125,529
Total Special Salaries					1,200	1,200	1,200	1,200
TOTAL AUTHORIZED POSITIONS	2	2	2					

CITY OF WICHITA 2009/2010 ANNUAL BUDGET

DEPARTMENT	04 LAW
FUND	625 SELF INSURANCE FUND
SERVICE	0604076 TORT LIABILITY
GOAL	6 INTERNAL PERSPECTIVE

		2007 ACTUAL	2008 ADOPTED	2008 REVISED	2009 ADOPTED	2010 APPROVED
110	Regular Salaries	0	0	0	0	0
120	Special Salaries	0	0	0	0	0
130	Overtime	0	0	0	0	0
140	Employee Benefits	0	0	0	0	0
150	Shrinkage	0	0	0	0	0
Subtotal Salaries and Benefits		0	0	0	0	0
210	Utilities	0	0	0	0	0
220	Communications	0	270	540	540	540
230	Transportation and Training	3,791	2,400	4,800	4,800	4,800
240	Insurance	0	0	0	0	0
250	Professional Services	113,898	50,930	101,860	101,860	101,860
260	Data Processing	0	2,250	4,488	4,104	4,104
270	Equipment Charges	0	600	1,200	1,200	1,200
280	Buildings and Grounds Charges	0	0	0	0	0
290	Other Contractuals	2,134	0	0	0	0
Subtotal Contractuals		119,823	56,450	112,888	112,504	112,504
310	Office Supplies	0	0	0	0	0
320	Clothing and Towels	0	0	0	0	0
330	Chemicals	0	0	0	0	0
340	Equipment Parts and Supplies	0	0	0	0	0
350	Materials	0	0	0	0	0
370	Building Parts and Materials	0	0	0	0	0
380	Non-capitalizable Equipment	0	0	0	0	0
390	Other Commodities	0	0	0	0	0
Subtotal Commodities		0	0	0	0	0
410	Land	0	0	0	0	0
420	Buildings	0	0	0	0	0
430	Improvements Other Than Bldgs.	0	0	0	0	0
440	Office Equipment	0	0	0	0	0
450	Vehicular Equipment	0	0	0	0	0
460	Operating Equipment	0	0	0	0	0
Subtotal Capital Outlay		0	0	0	0	0
510	Interfund Transfers	0	0	0	0	0
520	Debt Service	0	0	0	0	0
530	Other Non-operating Expenses	905,136	583,160	583,160	583,160	583,160
540	Inventory Accounts	0	0	0	0	0
550	Projects Closing Entries	0	0	0	0	0
Subtotal Other		905,136	583,160	583,160	583,160	583,160
TOTAL		1,024,959	639,610	696,048	695,664	695,664



The Keeper of the Plains sculpture raises his face toward the sky and lifts his arms in supplication to the Great Spirit.

THE KEEPER OF THE PLAINS...

A symbol of Wichita and Sedgwick County, this majestic 44-foot sculpture was designed by Blackbear Bosin (1921-1980), a Kiowa-Comanche and internationally recognized artist, muralist and designer. On May 18, 1974 a ceremony took place to dedicate the Keeper, which was designated as a Wichita Bicentennial project. The project was rededicated to the community on the 33rd anniversary of that Bicentennial project date. The 5-ton sculpture was placed at the confluence of the little and big Arkansas Rivers, which is considered a sacred site by Native Americans and was home to the Wichita tribe for many years.

A 2006 project to elevate the sculpture on a 30-foot rock promontory so it could be seen from farther away was completed and officially dedicated by Mayor Carl Brewer and the City Council on May 18, 2007.

CITY OF WICHITA 2009/2010 ANNUAL BUDGET

MULTI-YEAR FUND OVERVIEW - PENSION FUNDS

	2007 ACTUAL	2008 ADOPTED	2008 REVISED	2009 ADOPTED	2010 APPROVED
Revenues:					
Contributions	21,843,264	23,848,480	22,870,560	23,782,790	24,727,820
Investment Income	118,206,409	121,664,280	92,313,470	99,430,420	107,154,800
Other Revenue	2,102,726	2,427,610	2,964,750	3,104,750	3,234,750
Total Budgeted Revenues	142,152,399	147,940,370	118,148,780	126,317,960	135,117,370
Expenditures:					
Salaries and Benefits	44,853,069	47,542,260	50,266,920	47,980,847	51,786,754
Contractuals	13,626,083	10,592,740	16,084,014	17,242,130	18,464,760
Commodities	2,276	3,550	4,850	2,550	2,550
Capital Outlay	27,441	8,600	243,920	0	0
Other	3,645,208	4,748,260	5,147,270	5,327,540	5,507,930
Total Budgeted Expenditures	62,154,077	62,895,410	71,746,974	70,553,067	75,761,994
Budgeted Income (Loss)	79,998,322	85,044,960	46,401,806	55,764,893	59,355,376
Fund Balance - January 1	985,918,999	1,065,961,042	1,065,917,321	1,112,319,128	1,168,084,021
Fund Balance - December 31	1,065,917,321	1,151,006,002	1,112,319,128	1,168,084,021	1,227,439,397
Budgeted Contractuals Expenditure Detail:					
Admin. Charges - Employees Retirement	11,865	11,870	11,870	11,870	11,870
Admin. Charges - P&F Retirement	11,865	11,870	11,870	11,870	11,870
Other Contractuals	13,602,353	10,569,000	16,060,274	17,218,390	18,441,020
Total Contractuals Expenditures	13,626,083	10,592,740	16,084,014	17,242,130	18,464,760
Budgeted Other Expenditure Detail:					
Contributions to Other Funds	2,102,726	2,463,260	2,942,270	3,082,540	3,212,930
Refunds of Contributions	1,351,605	2,050,000	2,070,000	2,110,000	2,160,000
Death Benefits	86,507	135,000	135,000	135,000	135,000
Other Expenditures	104,370	100,000	0	0	0
Total Other Expenditures	3,645,208	4,748,260	5,147,270	5,327,540	5,507,930

CITY OF WICHITA 2009/2010 ANNUAL BUDGET

MULTI-YEAR FUND OVERVIEW - PENSION FUNDS

	2007 ACTUAL	2008 ADOPTED	2008 REVISED	2009 ADOPTED	2010 APPROVED
WER 3 (Fund 778) Fund Detail					
<u>Revenues</u>					
Employer Contributions - WER 3	1,428,687	1,560,030	1,562,620	1,623,830	1,685,640
Employee Contributions - WER 3	1,428,687	1,560,030	1,562,620	1,623,830	1,685,640
Interest and Dividends	530,175	363,510	634,730	682,830	733,880
Investment Gain (Loss)	1,210,492	1,442,910	929,210	994,980	1,060,150
Other	1,178	100,000	551,740	591,870	622,020
ST: Revenues	4,599,218	5,026,480	5,240,920	5,517,340	5,787,330
<u>Expenditures</u>					
Professional Services	199,462	152,010	237,650	256,060	275,970
Refunded Contributions	864,999	750,000	770,000	810,000	860,000
Operating Transfers Out	2,102,726	2,151,000	2,300,000	2,400,000	2,500,000
Other Expenses	32,640	167,380	714,570	683,850	721,160
ST: Expenditures	3,199,828	3,220,390	4,022,220	4,149,910	4,357,130
Budgeted Income (Loss)	1,399,391	1,806,090	1,218,700	1,367,430	1,430,200
Net assets, January 1	14,721,802	16,391,194	16,121,193	17,339,893	18,707,323
Net assets, December 31	16,121,193	18,197,284	17,339,893	18,707,323	20,137,523

WER (Fund 775) Fund Detail					
<u>Revenues</u>					
Employer Contributions - WER	2,357,052	2,529,440	2,451,330	2,549,380	2,651,360
Employee Contributions - WER	2,543,563	2,740,230	2,645,310	2,751,120	2,861,160
Interest and Dividends	19,046,174	13,130,660	20,704,170	22,308,740	24,037,660
Investment Gain (Loss)	41,924,866	49,776,170	26,424,730	28,472,650	30,679,280
Operating Transfers In	2,102,726	2,151,000	2,300,000	2,400,000	2,500,000
Other	42,297	32,720	58,820	63,380	68,290
ST: Revenues	68,016,678	70,360,220	54,584,360	58,545,270	62,797,750
<u>Expenditures</u>					
Pension Benefits - WER	24,981,688	26,100,000	27,200,000	26,200,000	28,700,000
Death Benefits - WER	70,929	125,000	125,000	125,000	125,000
Professional Services	6,904,524	5,190,410	7,898,550	8,507,522	9,198,596
Refunded Contributions	232,417	800,000	800,000	800,000	800,000
Other Expenses	384,527	769,870	615,484	530,565	518,268
ST: Expenditures	32,574,085	32,985,280	36,639,034	36,163,087	39,341,864
Budgeted Income (Loss)	35,442,593	37,374,940	17,945,326	22,382,183	23,455,886
Net assets, January 1	510,438,288	546,660,990	545,880,881	563,826,207	586,208,390
Net assets, December 31	545,880,881	584,035,930	563,826,207	586,208,390	609,664,276

Police and Fire (Fund 776) Fund Detail					
<u>Revenue</u>					
Employer Contributions - P&F	10,029,253	11,130,300	10,430,420	10,847,640	11,281,550
Employee Contributions - P&F	4,056,022	4,328,450	4,218,260	4,386,990	4,562,470
Interest and Dividends	17,386,978	11,882,820	19,112,500	20,563,720	22,189,730
Investment Gain (Loss)	38,025,727	45,068,210	24,393,270	26,283,750	28,320,750
Other	38,523	143,890	169,050	173,250	177,790
ST: Revenues	69,536,503	72,553,670	58,323,500	62,255,350	66,532,290
<u>Expenditures</u>					
Pension Benefits - P&F	19,426,945	21,000,000	22,600,000	21,300,000	22,600,000
Death Benefits - P&F	15,578	11,870	10,000	10,000	10,000
Administrative Charge	11,865	10,000	11,870	11,870	11,870
Professional Services	6,316,815	4,733,070	7,369,340	7,884,710	8,435,660
Refunded Contributions	254,190	500,000	500,000	500,000	500,000
Other Expenses	354,772	434,800	594,510	533,490	505,470
ST: Expenditures	26,380,164	26,689,740	31,085,720	30,240,070	32,063,000
Budgeted Income (Loss)	43,156,339	45,863,930	27,237,780	32,015,280	34,469,290
Net assets, January 1	460,758,909	502,908,289	503,915,248	531,153,028	563,168,308
Net assets, December 31	503,915,248	548,772,219	531,153,028	563,168,308	597,637,598

CITY OF WICHITA 2009/2010 ANNUAL BUDGET

DEPARTMENT	03 FINANCE
FUND	778 PENSION FUND
SERVICE	060406 WER 3
GOAL	6 INTERNAL PERSPECTIVE

		2007 ACTUAL	2008 ADOPTED	2008 REVISED	2009 ADOPTED	2010 APPROVED
110	Regular Salaries	0	0	0	0	0
120	Special Salaries	0	0	0	0	0
130	Overtime	0	0	0	0	0
140	Employee Benefits	0	0	0	0	0
150	Shrinkage	0	0	0	0	0
Subtotal Salaries and Benefits		0	0	0	0	0
210	Utilities	0	0	0	0	0
220	Communications	1	100	100	100	100
230	Transportation and Training	0	0	0	0	0
240	Insurance	0	0	0	0	0
250	Professional Services	231,869	189,150	271,510	289,600	315,940
260	Data Processing	0	28,460	57,690	58,510	59,390
270	Equipment Charges	0	0	0	0	0
280	Buildings and Grounds Charges	0	0	0	0	0
290	Other Contractuals	232	1,580	1,600	1,600	1,600
Subtotal Contractuals		232,103	219,290	330,900	349,810	377,030
310	Office Supplies	0	100	100	100	100
320	Clothing and Towels	0	0	0	0	0
330	Chemicals	0	0	0	0	0
340	Equipment Parts and Supplies	0	0	0	0	0
350	Materials	0	0	0	0	0
370	Building Parts and Materials	0	0	0	0	0
380	Non-capitalizable Equipment	0	0	0	0	0
390	Other Commodities	0	0	0	0	0
Subtotal Commodities		0	100	100	100	100
410	Land	0	0	0	0	0
420	Buildings	0	0	0	0	0
430	Improvements Other Than Bldgs.	0	0	0	0	0
440	Office Equipment	0	0	71,220	0	0
450	Vehicular Equipment	0	0	0	0	0
460	Operating Equipment	0	0	0	0	0
Subtotal Capital Outlay		0	0	71,220	0	0
510	Interfund Transfers	2,102,726	2,251,000	2,850,000	2,990,000	3,120,000
520	Debt Service	0	0	0	0	0
530	Other Non-operating Expenses	864,999	750,000	770,000	810,000	860,000
540	Inventory Accounts	0	0	0	0	0
550	Projects Closing Entries	0	0	0	0	0
Subtotal Other		2,967,725	3,001,000	3,620,000	3,800,000	3,980,000
TOTAL		3,199,828	3,220,390	4,022,220	4,149,910	4,357,130

CITY OF WICHITA 2009/2010 ANNUAL BUDGET

DEPARTMENT	03 FINANCE
FUND	775 PENSION FUND
SERVICE	060406 PENSION
GOAL	6 INTERNAL PERSPECTIVE

		2007 ACTUAL	2008 ADOPTED	2008 REVISED	2009 ADOPTED	2010 APPROVED
110	Regular Salaries	24,981,688	26,091,400	27,200,000	26,200,000	28,700,000
120	Special Salaries	0	0	0	0	0
130	Overtime	0	0	0	0	0
140	Employee Benefits	0	0	0	0	0
150	Shrinkage	0	0	0	0	0
Subtotal Salaries and Benefits		24,981,688	26,091,400	27,200,000	26,200,000	28,700,000
210	Utilities	0	0	0	0	0
220	Communications	638	2,000	2,000	2,000	2,000
230	Transportation and Training	0	9,000	9,000	9,000	9,000
240	Insurance	0	0	0	0	0
250	Professional Services	6,947,264	5,325,280	7,987,970	8,592,730	9,264,150
260	Data Processing	0	34,520	70,890	70,960	72,020
270	Equipment Charges	0	0	0	0	0
280	Buildings and Grounds Charges	0	0	0	0	0
290	Other Contractuals	15,070	16,280	16,300	16,300	16,300
Subtotal Contractuals		6,962,973	5,387,080	8,086,160	8,690,990	9,363,470
310	Office Supplies	0	0	0	0	0
320	Clothing and Towels	0	0	0	0	0
330	Chemicals	0	0	0	0	0
340	Equipment Parts and Supplies	0	0	0	0	0
350	Materials	0	0	0	0	0
370	Building Parts and Materials	0	0	0	0	0
380	Non-capitalizable Equipment	0	0	0	0	0
390	Other Commodities	88	100	100	100	100
Subtotal Commodities		88	100	100	100	100
410	Land	0	0	0	0	0
420	Buildings	0	0	0	0	0
430	Improvements Other Than Bldgs.	0	0	0	0	0
440	Office Equipment	27,441	8,600	86,350	0	0
450	Vehicular Equipment	0	0	0	0	0
460	Operating Equipment	0	0	0	0	0
Subtotal Capital Outlay		27,441	8,600	86,350	0	0
510	Interfund Transfers	0	0	0	0	0
520	Debt Service	0	0	0	0	0
530	Other Non-operating Expenses	303,346	925,000	925,000	925,000	925,000
540	Inventory Accounts	0	0	0	0	0
550	Projects Closing Entries	0	0	0	0	0
Subtotal Other		303,346	925,000	925,000	925,000	925,000
TOTAL		32,275,535	32,412,180	36,297,610	35,816,090	38,988,570

CITY OF WICHITA 2009/2010 ANNUAL BUDGET

DEPARTMENT	03 FINANCE
FUND	775 PENSION FUND
SERVICE	060406 PENSION MANAGEMENT
GOAL	6 INTERNAL PERSPECTIVE

		2007 ACTUAL	2008 ADOPTED	2008 REVISED	2009 ADOPTED	2010 APPROVED
110	Regular Salaries	365,202	366,370	379,844	387,588	389,637
120	Special Salaries	40	0	0	0	0
130	Overtime	323	0	3,000	3,000	3,000
140	Employee Benefits	78,872	84,490	84,076	90,259	94,116
150	Shrinkage	0	0	0	0	0
Subtotal Salaries and Benefits		444,437	450,860	466,920	480,847	486,754
210	Utilities	0	0	0	0	0
220	Communications	6,018	7,200	7,150	7,150	7,150
230	Transportation and Training	1,855	19,950	19,950	19,950	19,950
240	Insurance	0	0	0	0	0
250	Professional Services	0	5,000	0	0	0
260	Data Processing	30,316	78,280	86,584	84,160	84,160
270	Equipment Charges	0	90	90	90	90
280	Buildings and Grounds Charges	0	0	0	0	0
290	Other Contractuals	7,975	8,470	8,470	8,470	8,470
Subtotal Contractuals		46,163	118,990	122,244	119,820	119,820
310	Office Supplies	2,115	2,000	2,000	2,000	2,000
320	Clothing and Towels	0	0	0	0	0
330	Chemicals	0	0	0	0	0
340	Equipment Parts and Supplies	0	0	0	0	0
350	Materials	0	0	0	0	0
370	Building Parts and Materials	0	0	0	0	0
380	Non-capitalizable Equipment	0	1,150	2,450	150	150
390	Other Commodities	15	100	100	100	100
Subtotal Commodities		2,131	3,250	4,550	2,250	2,250
410	Land	0	0	0	0	0
420	Buildings	0	0	0	0	0
430	Improvements Other Than Bldgs.	0	0	0	0	0
440	Office Equipment	0	0	0	0	0
450	Vehicular Equipment	0	0	0	0	0
460	Operating Equipment	0	0	0	0	0
Subtotal Capital Outlay		0	0	0	0	0
510	Interfund Transfers	-194,180	0	-252,290	-255,920	-255,530
520	Debt Service	0	0	0	0	0
530	Other Non-operating Expenses	0	0	0	0	0
540	Inventory Accounts	0	0	0	0	0
550	Projects Closing Entries	0	0	0	0	0
Subtotal Other		-194,180	0	-252,290	-255,920	-255,530
TOTAL		298,550	573,100	341,424	346,997	353,294

CITY OF WICHITA 2009/2010 ANNUAL BUDGET

DEPARTMENT	03 FINANCE
FUND	775 PENSION FUND
SERVICE	060406 PENSION MANAGEMENT
GOAL	6 INTERNAL PERSPECTIVE

POSITION TITLE	2007	2008	2009	RANGE	2008 ADOPTED	2008 REVISED	2009 ADOPTED	2010 APPROVED
Pension Manager	1	1	1	C52	77,210	81,909	81,909	81,909
Assistant Pension Manager	1	1	1	C43	70,810	73,536	73,536	73,536
Senior Accountant	1	1	1	C43	70,160	73,536	73,536	73,536
Administrative Assistant	1	1	1	928	49,300	51,619	55,026	56,402
Administrative Aide III	1	1	1	926	54,470	54,255	56,425	56,425
Secretary	1	1	1	619	38,120	38,869	40,424	40,424
Subtotal	6	6	6		360,070	373,724	380,856	382,231
Other Regular Salaries					6,300	6,120	6,732	7,406
Total Regular Salaries					366,370	379,844	387,588	389,637
TOTAL AUTHORIZED POSITIONS	6	6	6					

CITY OF WICHITA 2009/2010 ANNUAL BUDGET

DEPARTMENT	03 FINANCE
FUND	776 PENSION FUND
SERVICE	060406 POLICE AND FIRE
GOAL	6 INTERNAL PERSPECTIVE

		2007 ACTUAL	2008 ADOPTED	2008 REVISED	2009 ADOPTED	2010 APPROVED
110	Regular Salaries	19,426,945	21,000,000	22,600,000	21,300,000	22,600,000
120	Special Salaries	0	0	0	0	0
130	Overtime	0	0	0	0	0
140	Employee Benefits	0	0	0	0	0
150	Shrinkage	0	0	0	0	0
Subtotal Salaries and Benefits		19,426,945	21,000,000	22,600,000	21,300,000	22,600,000
210	Utilities	0	0	0	0	0
220	Communications	247	2,000	2,000	2,000	2,000
230	Transportation and Training	914	9,000	9,000	9,000	9,000
240	Insurance	0	0	0	0	0
250	Professional Services	6,369,232	4,805,370	7,446,330	7,983,090	8,504,960
260	Data Processing	65	34,520	70,920	70,960	72,020
270	Equipment Charges	0	0	0	0	0
280	Buildings and Grounds Charges	0	0	0	0	0
290	Other Contractuals	14,386	16,490	16,460	16,460	16,460
Subtotal Contractuals		6,384,844	4,867,380	7,544,710	8,081,510	8,604,440
310	Office Supplies	0	0	0	0	0
320	Clothing and Towels	0	0	0	0	0
330	Chemicals	0	0	0	0	0
340	Equipment Parts and Supplies	0	0	0	0	0
350	Materials	0	0	0	0	0
370	Building Parts and Materials	0	0	0	0	0
380	Non-capitalizable Equipment	0	0	0	0	0
390	Other Commodities	58	100	100	100	100
Subtotal Commodities		58	100	100	100	100
410	Land	0	0	0	0	0
420	Buildings	0	0	0	0	0
430	Improvements Other Than Bldgs.	0	0	0	0	0
440	Office Equipment	0	0	86,350	0	0
450	Vehicular Equipment	0	0	0	0	0
460	Operating Equipment	0	0	0	0	0
Subtotal Capital Outlay		0	0	86,350	0	0
510	Interfund Transfers	298,550	312,260	344,560	348,460	348,460
520	Debt Service	0	0	0	0	0
530	Other Non-operating Expenses	269,767	510,000	510,000	510,000	510,000
540	Inventory Accounts	0	0	0	0	0
550	Projects Closing Entries	0	0	0	0	0
Subtotal Other		568,317	822,260	854,560	858,460	858,460
TOTAL		26,380,164	26,689,740	31,085,720	30,240,070	32,063,000