


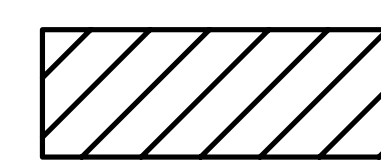
# LEGAL DESCRIPTION

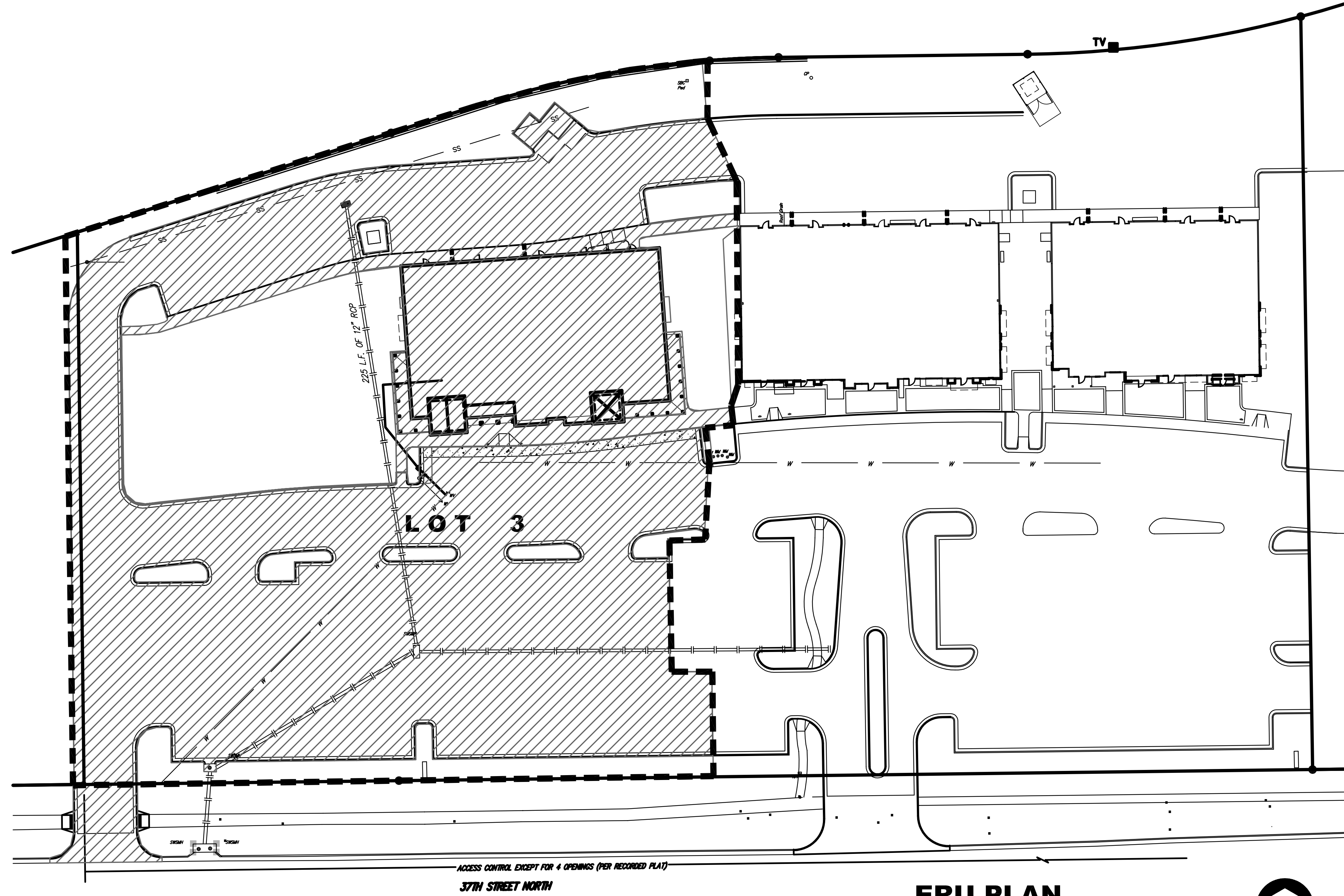
Lot 3 and the East 5' of Lot 2 of FRANK & JOHNNY'S ADDITION, an Addition to Wichita, Sedgwick County, Kansas.

# SITE INFORMATION

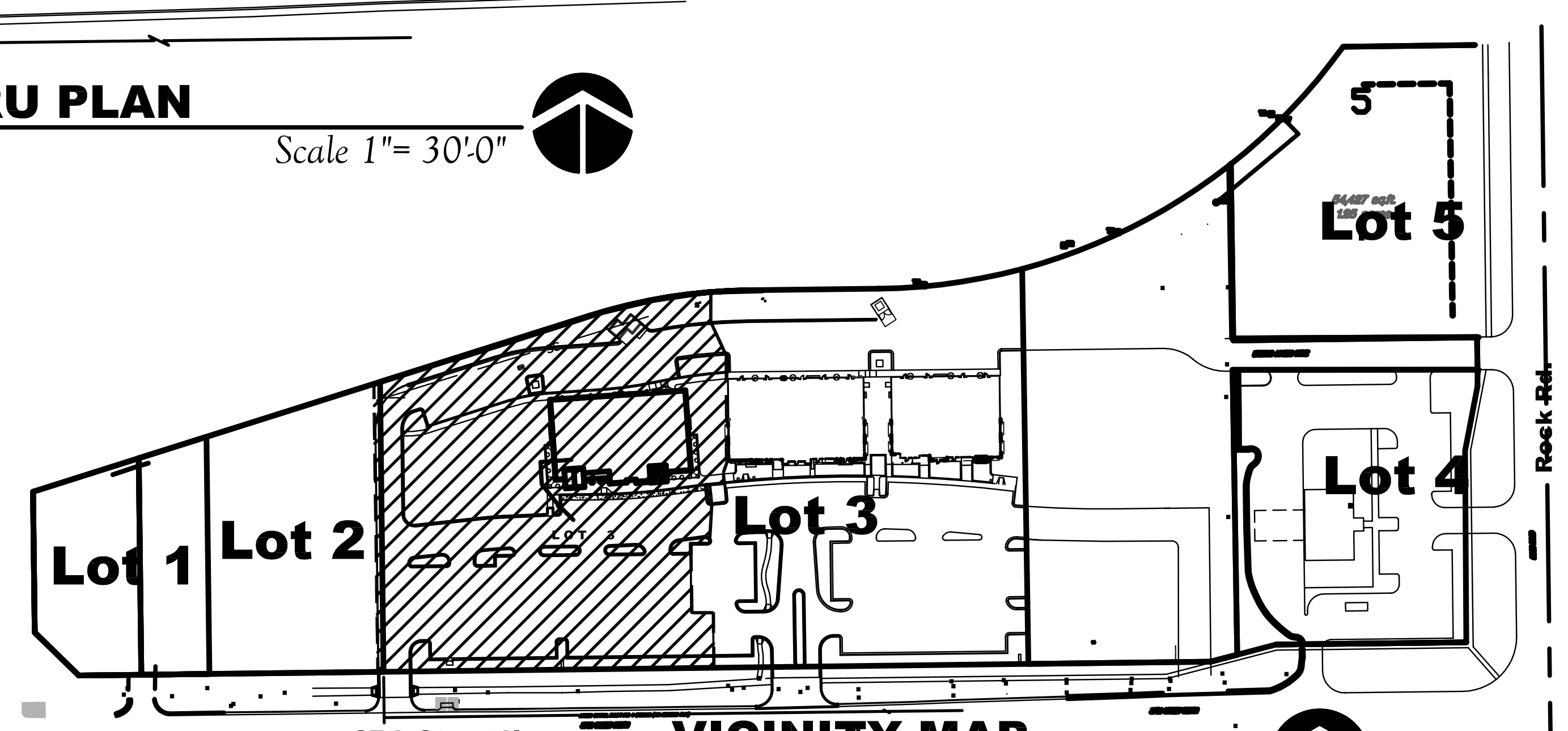
	AREA	PERCENTAGE
Lot 3, Block 1:	278,453.93 sq. ft. (6.39 acres)	100%
Ownership:	278,453.93 sq. ft. (6.39 acres)	100%
Project Limits:	96,336 sq. ft. (2.21 acres)	34.6% of Lot 3, Block 1
Impervious Area:	72,407.89 sq. ft. (1.66 acres)	75.2% of Project Limits
Pervious Area:	19,928.11 sq. ft. (0.46 acres)	24.8% of Project Limits

# LEGEND

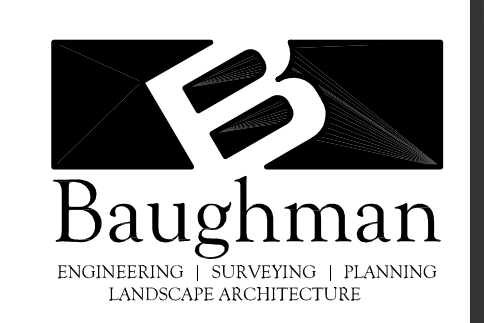
- PROJECT LIMITS= 
- IMPERVIOUS AREA= 



**ERU PLAN**  
Scale 1"= 30'0" 



**VICINITY MAP**  
Scale 1"= 100'0" 



Baughman Company, P.A.  
315 Ellis - Wichita, KS 67211  
P316-262-7273 F316-262-0149