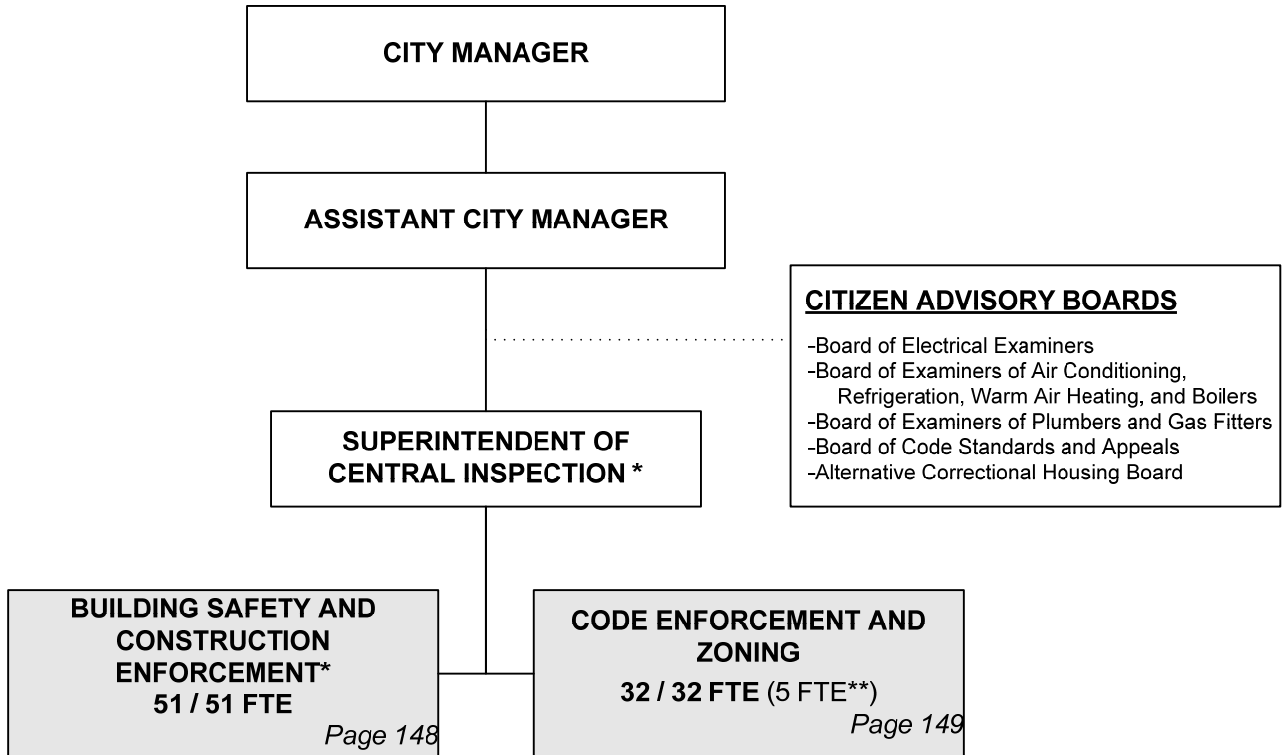




ORGANIZATION CHART

OFFICE OF CENTRAL INSPECTION



* Position included with Building Safety and Construction Enforcement

** General Fund funded positions

Total Authorized Positions/ Full-Time Equivalent = 83 / 83 FTE (5 FTE)**



AUTHORIZED POSITIONS

OFFICE OF CENTRAL INSPECTION

Authorized Positions	Range	2007	2008	2009
Department Director	E81	1	1	1
Division Manager*	D61	1	0	0
Senior Plans Examiner	C52	1	1	1
Inspection Administrator	C51	2	2	2
Inspection Administrator ¹	C44	2	3	3
Division Supervisor	C43	1	1	1
Inspection Supervisor ²	C43	2	3	3
Plans Examiner	C42	6	6	6
Fire Protection Systems Specialist	827	1	1	1
Combination Inspector	627	10	10	10
Combination Neighborhood Inspector ³	627	17	23	24
Electric & Elevator Inspector III	627	7	7	7
Plumbing & Mechanical Inspector III ⁴	627	8	8	9
Senior Building Permit Examiner	627	3	3	3
Administrative Aide II	623	1	1	1
Administrative Secretary	621	1	1	1
Radio Dispatcher	621	1	1	1
Administrative Aide I ²	620	1	2	2
Account Clerk II	619	2	1	1
Customer Service Clerk II	619	3	4	4
Secretary	619	1	1	1
Clerk III	617	1	1	1
TOTAL AUTHORIZED POSITIONS		73	81	83
General Fund		5	5	5
Central Inspection Fund		68	76	78

- ¹ The Division Manager position was replaced with an Inspector Administrator position in the 2008 Revised Budget.
- ² Additional positions were added when the Environmental Maintenance service transferred from Environmental Services for the 2008 Adopted Budget.
- ³ Six Combination Neighborhood Inspectors were transferred from Environmental Services to Central Inspection for the 2008 Adopted Budget. One Combination Neighborhood Inspector is added to the Zoning Section for the 2009 Budget.
- ⁴ One Plumbing & Mechanical Inspector III is added for the 2009 Budget.

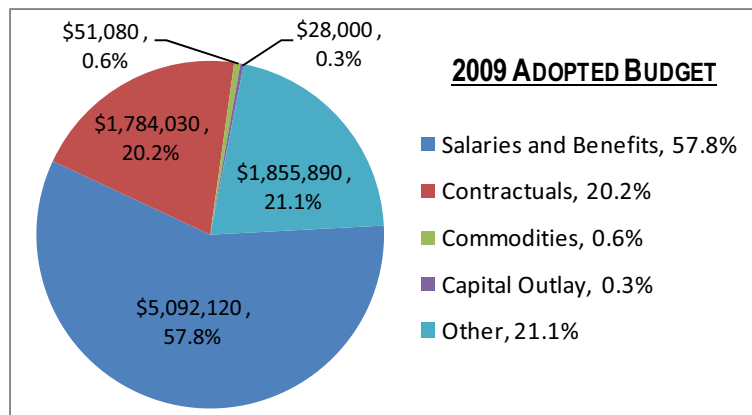


MISSION

To promote, enhance, and ensure a safe, sanitary, and healthy environment in every building in which Wichitans assemble, and to promote, enhance, and ensure strong, stable, and healthy neighborhoods throughout Wichita.

DEPARTMENTAL GOALS	CITY GOAL ALIGNMENT
1 Improve environmental health and community safety.	Safe and Secure Community
2 Increase and sustain neighborhood vibrancy Citywide.	Core Area and Neighborhood
3 Increase sense of community, neighborhood involvement, and satisfaction.	Core Area and Neighborhood

SERVICES EXPENDITURES BY FUND	FUND	2007 ACTUAL	2008 ADOPTED	2008 REVISED	2009 ADOPTED	2010 APPROVED
Building Safety and Construction Enforcement	Central Inspection Fund	4,863,395	4,551,890	4,774,900	6,311,470	4,859,720
Code Enforcement and Zoning	Central Inspection Fund	1,170,633	1,741,440	1,905,390	2,113,590	2,144,790
Code Enforcement and Zoning	General Fund	0	758,750	757,830	725,516	738,486
Code Enforcement and Zoning	Grant Fund	0	167,900	167,900	167,900	167,900
TOTAL EXPENDITURES		\$6,034,058	\$7,219,980	\$7,606,020	\$9,318,476	\$7,910,896
	2009 ADOPTED %					
TOTAL GENERAL FUND	7.8%	0	\$758,750	\$757,830	\$725,516	\$738,486
TOTAL OTHER FUNDS	90.4%	\$6,034,028	\$6,293,330	\$6,680,290	\$8,425,060	\$7,004,510
TOTAL FEDERAL AND STATE GRANT FUNDS	1.8%	0	\$167,900	\$167,900	\$167,900	\$167,900



The Office of Central Inspection is primarily funded by fees for building activities, but also receives General Fund and Community Development Block Grant support for code enforcement activities. Eighty percent of revenue collected by the Central Inspection fund can be used for code enforcement activities.

In 2009, there are 83 full time employees in the Office of Central Inspection; 78 are paid for by the Central Inspection Fund and 5 from the General Fund. Major contractual expenditures include demolition activity as well as fleet rentals, administrative charges, and data processing fees. Expenditures in the Other category include transfers to the Urban Development Office.

DEPARTMENT PERFORMANCE HIGHLIGHTS - 2009 ADOPTED BUDGET:

- ◆ The 2009 Adopted Budget includes an additional Plumbing & Mechanical Inspector to address greater workload, as well as an additional Combination Neighborhood Inspector in the Zoning Section in response increased workload stemming from recently adopted ordinances.



BUILDING SAFETY AND CONSTRUCTION ENFORCEMENT

OFFICE OF CENTRAL INSPECTION

MISSION

To promote, enhance and ensure the safe, sanitary, and healthy environment of every building in Wichita in which people reside, work, or assemble.

SERVICE DESCRIPTION

The Building Safety and Construction Enforcement service oversees construction and remodeling of structures in Wichita. The City of Wichita has adopted codes for commercial and residential buildings. The steps in this process include site plan and land-use review, architectural and engineering design review, construction permitting, and on-site project inspection. Additionally, Central Inspection tests, certifies, and licenses members of the construction trades as well as contractors to ensure safety and uniform application of codes. City of Wichita codes are modifications of International and Uniform construction codes. To ensure that codes are current, and to adopt revisions promulgated by professional code associations, Central Inspection has a number of industry boards for trades and stakeholders. Central Inspection works closely with industry trade associations and stakeholders to ensure quality, code-compliant construction, and to implement safe construction practices.

SERVICE OBJECTIVES		DEPT. GOAL ALIGNMENT
A	Provide a broad range of continuing education and training opportunities for staff, project designers, contractors, tradesmen and other industry professionals, based on identified staff and industry needs.	1
B	Review new and/or improved products, construction standards/practices and model codes (in conjunction with the design, construction and trade industries), and recommend appropriate local code and policy amendments for adoption and implementation.	1
C	Utilize technology and the Internet to provide: (1) more convenient and timely customer service; (2) improved, more immediate communication between staff and customers; and (3) more efficient and effective utilization of permit, plan review and inspection staff.	1
D	Enhance plan review, permitting and inspection quality control measures.	1

PERFORMANCE MEASURES	OBJECTIVE ALIGNMENT	2006		2007		2008	2009
		GOAL	ACTUAL	GOAL	ACTUAL	GOAL	GOAL
Percentage of On-Line Permit Applications Reviewed within Four Business Hours	C	96%	96%	98%	96.4%	97.0%	97.5%
Percentage of Initial Commercial Project Plan Reviews Completed within Published Target Timeframes	C, D	97%	95.2%	97.5%	94.8%	96%	97%
Number of Designers, Contractors, and Trades People Receiving Training	A	500	691	500	851	500	500

STRATEGIC HIGHLIGHTS

- * A Combination Inspector is moved to Code Enforcement and Zoning for the 2009 Adopted Budget.
- ** An additional Mechanical Inspector is added for the 2009 Adopted Budget to assist with increasing workload and inspection complexity.

REVENUES BY SOURCES / EXPENDITURES BY CATEGORY	2007 ACTUAL	2008 ADOPTED	2008 REVISED	2009 ADOPTED	2010 APPROVED
General Fund Allocation	0	0	0	0	0
OCI Fund Allocation	4,863,395	4,551,890	4,774,900	6,311,470	4,859,720
TOTAL PROGRAM REVENUES	\$4,863,395	\$4,551,890	\$4,774,900	\$6,311,470	\$4,859,720
Salaries and Benefits	3,683,138	3,385,930	3,189,840	3,515,760	3,656,890
Contractuals	980,590	886,660	874,820	893,600	893,940
Commodities	28,278	27,040	27,040	32,220	27,040
Capital Outlay	0	0	0	14,000	0
Other	171,390	272,260	683,200	1,855,890	281,850
TOTAL PROGRAM EXPENDITURE	\$4,863,395	\$4,551,890	\$4,774,900	\$6,311,470	\$4,859,720
TOTAL POSITIONS / FTE	51 / 51	51 / 51	*50 / 50	**51 / 51	51 / 51



CODE ENFORCEMENT AND ZONING

OFFICE OF CENTRAL INSPECTION

MISSION

To promote, enhance and ensure consistent, high quality and appropriate land-use, and a safe, sanitary and healthy environment for every neighborhood and building in which Wichitans and visitors live, play, work and/or assemble. Increase neighborhood vibrancy by aggressively stopping blight through enforcement of housing, environmental and zoning regulations, with community involvement.

SERVICE DESCRIPTION

The Housing, Neighborhood, and Land-Use Code Enforcement service enforces the City of Wichita Nuisance Code (Title 8), the City of Wichita Housing Code (Title 20), the Wichita-Sedgwick County Unified Zoning Code (Title 28) and the Graffiti Ordinance (Title 5.37). This service is one of the leaders in the City's Stop Blight initiative and works closely with neighborhoods and community groups, as well as with City of Wichita employees in other departments, to improve and maintain the vibrancy of Wichita's neighborhoods.

Neighborhood inspectors are assigned to areas where they respond to citizen input and proactively investigate neighborhood conditions and zoning. Inspectors work with property and building owners to address violations in a timely manner. Additionally, staff is leading the effort to revise local ordinances and state statutes to better balance ownership rights with neighborhood maintenance and revitalization through code enforcement.

SERVICE OBJECTIVES		DEPT. GOAL ALIGNMENT
A	Effectively implement "StopBlight" program.	2
B	Implement more proactive approaches to identification of neighborhood code and nuisance problems by Neighborhood Inspectors and by citizens and/or neighborhoods.	2
C	Modify policies, procedures and processes to effectively reduce the time required to resolve neighborhood code complaints.	3

PERFORMANCE MEASURES	OBJECTIVE ALIGNMENT	2006		2007		2008	2009
		TARGET	ACTUAL	TARGET	ACTUAL	TARGET	TARGET
Average Days to Achieve Minimum Housing Code Case Compliance	A	NA	1,027	950	998	950	850
Average Days to Resolve a Dangerous Building Condemnation Case	B	NA	268	255	197	190	185
Average Days to Resolve an Emergency Board-up Case	C	NA	52	44	14	15	15

STRATEGIC HIGHLIGHTS

- * Beginning January 2008, OCI became the "one-stop" resource for most neighborhood code complaints, absorbing certain nuisance code enforcement functions previously handled by the Environmental Services Department. Eight positions were moved to OCI.
- **A Combination Inspector is moved to the Code Enforcement budget because this position reports to the Zoning Inspection Supervisor.
- ***An additional Combination Neighborhood Inspector is added to the Zoning section in 2009 to address workload associated with new ordinances.

REVENUES BY SOURCES / EXPENDITURES BY CATEGORY	2007 ACTUAL	2008 ADOPTED	2008 REVISED	2009 ADOPTED	2010 APPROVED
Federal Grant Allocation	0	167,900	167,900	167,900	167,900
General Fund Allocation	0	758,750	757,830	725,516	738,486
OCI Fund Allocation	1,170,633	1,766,440	1,905,390	2,143,934	2,172,174
TOTAL PROGRAM REVENUES	\$1,170,633	\$2,668,090	\$2,833,120	\$3,037,350	\$3,078,560
Salaries and Benefits	810,982	1,817,180	1,880,830	2,045,806	2,112,026
Contractuals	343,151	810,430	909,210	928,340	925,470
Commodities	2,733	13,080	13,680	18,860	13,680
Capital Outlay	13,767	27,400	27,400	14,000	0
Other	0	0	0	0	0
TOTAL PROGRAM EXPENDITURES	\$1,170,633	\$2,668,090	\$2,831,120	\$3,007,006	\$3,051,176
TOTAL POSITIONS / FTE	22 / 22	*30 / 30	**31 / 31	***32 / 32	32 / 32