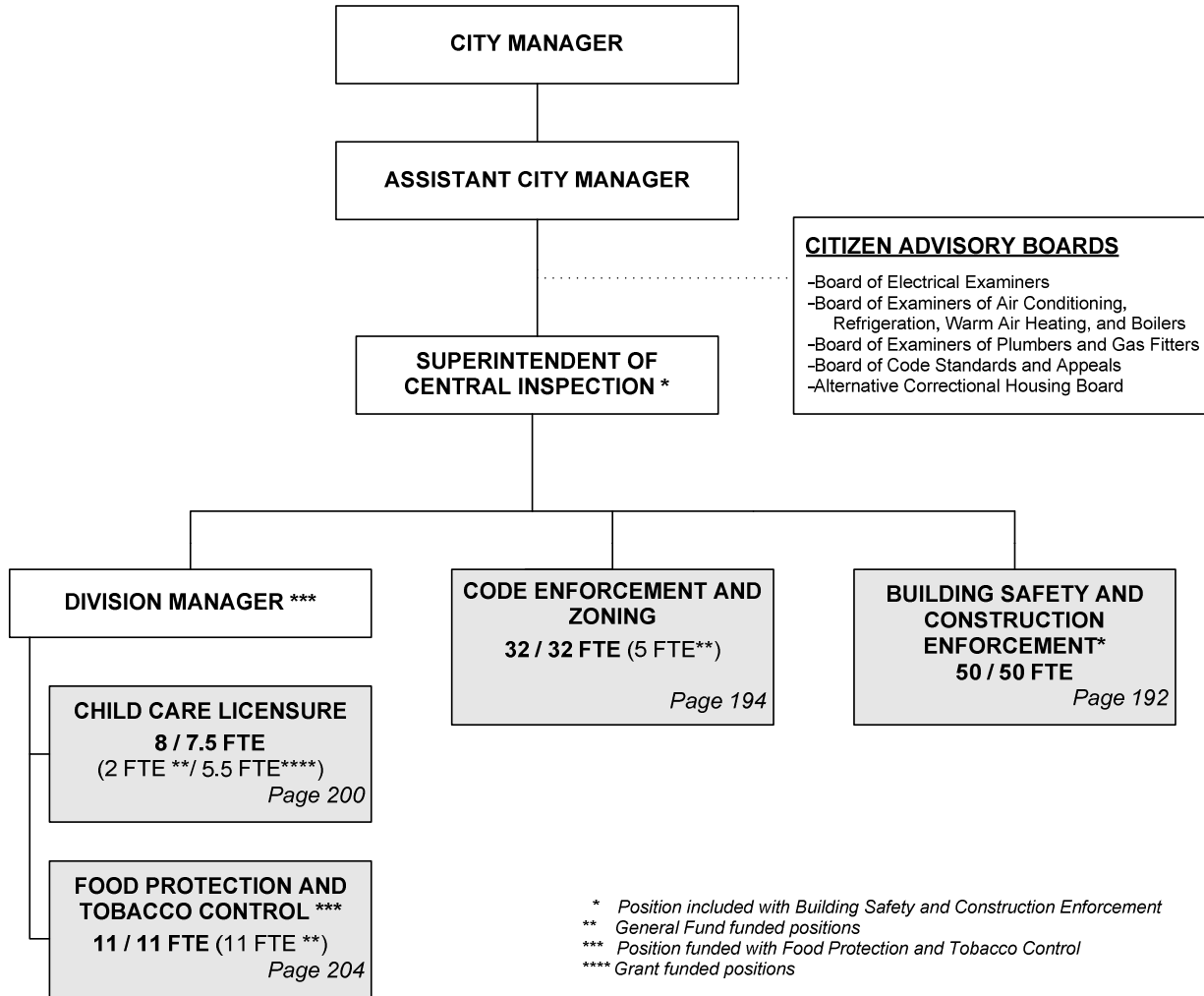


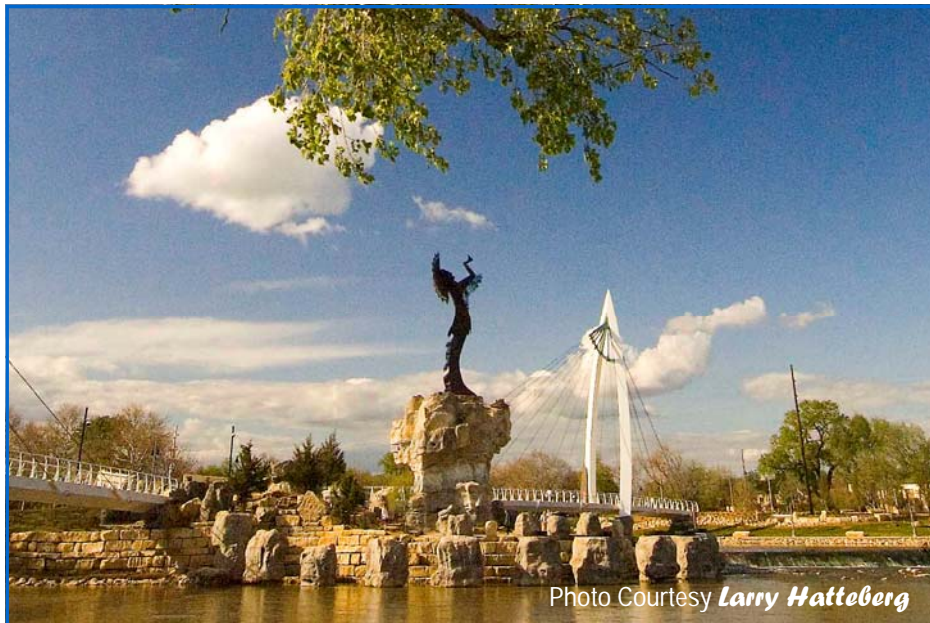
# CITY OF WICHITA 2010/2011 ANNUAL BUDGET

## Departmental Organization Chart

### OFFICE OF CENTRAL INSPECTION



Total Positions/ Full-Time Equivalent = **101 / 100.5 FTE** (18 FTE\*\*)



**The Keeper of the Plains sculpture raises his face toward the sky and lifts his arms in supplication to the Great Spirit.**

### **THE KEEPER OF THE PLAINS...**

A symbol of Wichita and Sedgwick County, this majestic 44-foot sculpture was designed by Blackbear Bosin (1921-1980), a Kiowa-Comanche and internationally recognized artist, muralist and designer. On May 18, 1974 a ceremony took place to dedicate the Keeper, which was designated as a Wichita Bicentennial project. The project was rededicated to the community on the 33rd anniversary of that Bicentennial project date. The 5-ton sculpture was placed at the confluence of the little and big Arkansas Rivers, which is considered a sacred site by Native Americans and was home to the Wichita tribe for many years.

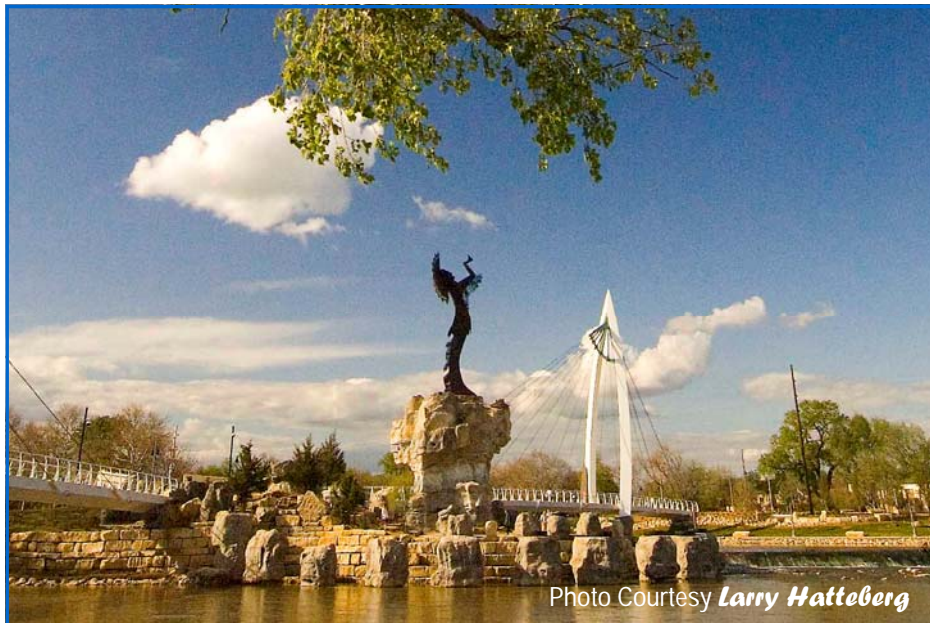
A 2006 project to elevate the sculpture on a 30-foot rock promontory so it could be seen from farther away was completed and officially dedicated by Mayor Carl Brewer and the City Council on May 18, 2007.

# CITY OF WICHITA 2010/2011 ANNUAL BUDGET

## MULTI-YEAR FUND OVERVIEW - OCI FUND

**FUND: 235**

	2008 ACTUAL	2009 ADOPTED	2009 REVISED	2010 ADOPTED	2011 APPROVED
<b>Revenues:</b>					
Special Assessments	2,727	7,350	8,600	2,500	2,500
Licenses and Permits	4,580,554	5,728,320	3,869,765	5,128,375	5,128,375
Charges for Services	904,372	893,520	385,640	1,043,122	1,029,412
Other Revenue	51,402	38,000	123,000	0	0
Interest Earnings	46,990	53,180	12,000	12,000	12,000
<b>Total Budgeted Revenues</b>	<b>5,586,045</b>	<b>6,720,370</b>	<b>4,399,005</b>	<b>6,185,997</b>	<b>6,172,287</b>
<b>Expenditures:</b>					
Salaries and Benefits	4,876,707	5,266,070	4,339,808	4,423,321	4,612,273
Contractuals	1,242,035	1,228,620	1,119,375	1,087,759	1,129,926
Commodities	36,742	46,480	33,390	93,266	97,267
Capital Outlay	0	28,000	0	0	0
Other	183,200	1,855,890	60,540	457,045	225,885
<b>Total Budgeted Expenditures</b>	<b>6,338,684</b>	<b>8,425,060</b>	<b>5,553,113</b>	<b>6,061,391</b>	<b>6,065,351</b>
<b>Budgeted Income (Loss)</b>	<b>(752,639)</b>	<b>(1,704,690)</b>	<b>(1,154,108)</b>	<b>124,606</b>	<b>106,936</b>
<b>Fund Balance - January 1</b>	<b>2,211,017</b>	<b>2,125,307</b>	<b>1,311,855</b>	<b>157,747</b>	<b>282,353</b>
Prior Year Adjustment	(146,523)				
<b>Fund Balance - December 31</b>	<b>1,311,855</b>	<b>420,617</b>	<b>157,747</b>	<b>282,353</b>	<b>389,289</b>
<b>Budgeted Contractuals Expenditure Detail:</b>					
Administrative Charge	337,860	337,860	337,860	291,100	291,100
Other Contractuals	904,175	890,760	781,515	796,659	838,826
<b>Total Contractual Expenditures</b>	<b>1,242,035</b>	<b>1,228,620</b>	<b>1,119,375</b>	<b>1,087,759</b>	<b>1,129,926</b>
<b>Budgeted Other Expenditure Detail:</b>					
Transfer Out - Economic Development Fund DAC	120,970	118,180	0	94,155	62,995
Transfer Out - Economic Development Fund	28,000	28,170	0	28,000	28,000
Transfer Out - General Fund ACM	34,230	34,540	34,540	34,890	34,890
Contingency	0	100,000	26,000	100,000	100,000
Program Enhancements	0	1,575,000	0	200,000	0
<b>Total Other Expenditures</b>	<b>183,200</b>	<b>1,855,890</b>	<b>60,540</b>	<b>457,045</b>	<b>225,885</b>



**The Keeper of the Plains sculpture raises his face toward the sky and lifts his arms in supplication to the Great Spirit.**

### **THE KEEPER OF THE PLAINS...**

A symbol of Wichita and Sedgwick County, this majestic 44-foot sculpture was designed by Blackbear Bosin (1921-1980), a Kiowa-Comanche and internationally recognized artist, muralist and designer. On May 18, 1974 a ceremony took place to dedicate the Keeper, which was designated as a Wichita Bicentennial project. The project was rededicated to the community on the 33rd anniversary of that Bicentennial project date. The 5-ton sculpture was placed at the confluence of the little and big Arkansas Rivers, which is considered a sacred site by Native Americans and was home to the Wichita tribe for many years.

A 2006 project to elevate the sculpture on a 30-foot rock promontory so it could be seen from farther away was completed and officially dedicated by Mayor Carl Brewer and the City Council on May 18, 2007.

# CITY OF WICHITA 2010/2011 ANNUAL BUDGET

**FUND**                    235 CENTRAL INSPECTION FUND  
**DEPARTMENT**        23 OFFICE OF CENTRAL INSPECTION

**COMBINED DETAIL SUMMARY**

		2008 ACTUAL	2009 ADOPTED	2009 REVISED	2010 ADOPTED	2011 APPROVED
110	Regular Salaries	3,697,246	4,099,440	3,715,045	3,647,529	3,601,060
120	Special Salaries	5,072	600	600	650	650
130	Overtime	165,189	0	0	0	0
140	Employee Benefits	1,009,200	1,166,030	981,090	1,102,007	1,135,563
150	Shrinkage	0	0	-356,927	-326,865	-125,000
	<b>Subtotal Salaries and Benefits</b>	<b>4,876,706</b>	<b>5,266,070</b>	<b>4,339,808</b>	<b>4,423,321</b>	<b>4,612,273</b>
210	Utilities	916	540	760	760	760
220	Communications	128,672	125,790	138,056	135,071	140,969
230	Transportation and Training	3,935	8,800	5,910	5,910	5,910
240	Insurance	15,466	15,450	14,408	14,389	15,450
250	Professional Services	133,501	84,220	60,720	60,720	60,720
260	Data Processing	289,450	340,730	268,158	304,676	323,184
270	Equipment Charges	179,686	175,150	172,161	162,206	178,906
280	Buildings and Grounds Charges	11,711	23,550	21,070	21,070	21,070
290	Other Contractuals	478,698	454,390	438,132	382,957	382,957
	<b>Subtotal Contractuals</b>	<b>1,242,035</b>	<b>1,228,620</b>	<b>1,119,375</b>	<b>1,087,759</b>	<b>1,129,926</b>
310	Office Supplies	18,727	16,000	16,900	16,900	16,900
320	Clothing and Towels	0	0	0	0	0
330	Chemicals	0	0	0	0	0
340	Equipment Parts and Supplies	1,679	8,800	2,800	63,256	63,256
350	Materials	3,852	0	0	0	4,000
370	Building Parts and Materials	0	0	0	0	0
380	Non-capitalizable Equipment	11,342	12,470	8,480	7,900	7,901
390	Other Commodities	1,142	9,210	5,210	5,210	5,210
	<b>Subtotal Commodities</b>	<b>36,742</b>	<b>46,480</b>	<b>33,390</b>	<b>93,266</b>	<b>97,267</b>
410	Land	0	0	0	0	0
420	Buildings	0	0	0	0	0
430	Improvements Other Than Bldgs.	0	0	0	0	0
440	Office Equipment	0	0	0	0	0
450	Vehicular Equipment	0	28,000	0	0	0
460	Operating Equipment	0	0	0	0	0
	<b>Subtotal Capital Outlay</b>	<b>0</b>	<b>28,000</b>	<b>0</b>	<b>0</b>	<b>0</b>
510	Interfund Transfers	183,200	180,890	34,540	157,045	125,885
520	Debt Service	0	0	0	0	0
530	Other Nonoperating Expenses	0	1,675,000	26,000	300,000	100,000
540	Inventory Accounts	0	0	0	0	0
550	Projects Closing Entries	0	0	0	0	0
	<b>Subtotal Other</b>	<b>183,200</b>	<b>1,855,890</b>	<b>60,540</b>	<b>457,045</b>	<b>225,885</b>
	<b>TOTAL</b>	<b>6,338,684</b>	<b>8,425,060</b>	<b>5,553,113</b>	<b>6,061,391</b>	<b>6,065,351</b>

# CITY OF WICHITA 2010/2011 ANNUAL BUDGET

<b>DEPARTMENT</b>	<b>23 OFFICE OF CENTRAL INSPECTION</b>
<b>FUND</b>	<b>235 OCI FUND</b>
<b>SERVICE</b>	<b>010901 BUILDING SAFETY AND ENFORCEMENT</b>

		2008 ACTUAL	2009 ADOPTED	2009 REVISED	2010 ADOPTED	2011 APPROVED
110	Regular Salaries	2,427,056	2,729,510	2,523,915	2,442,195	2,396,790
120	Special Salaries	3,606	600	600	650	650
130	Overtime	145,082	0	0	0	0
140	Employee Benefits	676,228	785,650	668,929	740,757	759,941
150	Shrinkage	0	0	-48,920	-48,393	0
<b>Subtotal Salaries and Benefits</b>		<b>3,251,971</b>	<b>3,515,760</b>	<b>3,144,524</b>	<b>3,135,209</b>	<b>3,157,381</b>
210	Utilities	916	540	0	0	0
220	Communications	96,798	99,810	105,751	105,810	107,933
230	Transportation and Training	3,935	7,450	4,560	4,560	4,560
240	Insurance	6,946	6,660	6,370	6,329	6,660
250	Professional Services	24,763	27,000	8,500	8,500	8,500
260	Data Processing	209,419	271,810	204,654	234,080	241,680
270	Equipment Charges	119,305	104,930	115,263	90,844	97,804
280	Buildings and Grounds Charges	895	0	520	520	520
290	Other Contractuals	392,743	375,400	360,367	314,751	314,751
<b>Subtotal Contractuals</b>		<b>855,720</b>	<b>893,600</b>	<b>805,985</b>	<b>765,394</b>	<b>782,408</b>
310	Office Supplies	17,866	16,000	16,000	16,000	16,000
320	Clothing and Towels	0	0	0	0	0
330	Chemicals	0	0	0	0	0
340	Equipment Parts and Supplies	1,621	5,800	2,800	43,963	43,963
350	Materials	771	0	0	0	0
370	Building Parts and Materials	0	0	0	0	0
380	Non-capitalizable Equipment	11,342	10,290	6,380	6,380	6,380
390	Other Commodities	1,142	130	130	130	130
<b>Subtotal Commodities</b>		<b>32,742</b>	<b>32,220</b>	<b>25,310</b>	<b>66,473</b>	<b>66,473</b>
410	Land	0	0	0	0	0
420	Buildings	0	0	0	0	0
430	Improvements Other Than Bldgs.	0	0	0	0	0
440	Office Equipment	0	0	0	0	0
450	Vehicular Equipment	0	14,000	0	0	0
460	Operating Equipment	0	0	0	0	0
<b>Subtotal Capital Outlay</b>		<b>0</b>	<b>14,000</b>	<b>0</b>	<b>0</b>	<b>0</b>
510	Interfund Transfers	183,200	180,890	34,540	157,045	125,885
520	Debt Service	0	0	0	0	0
530	Other Nonoperating Expenses	0	1,675,000	26,000	300,000	100,000
540	Inventory Accounts	0	0	0	0	0
550	Projects Closing Entries	0	0	0	0	0
<b>Subtotal Other</b>		<b>183,200</b>	<b>1,855,890</b>	<b>60,540</b>	<b>457,045</b>	<b>225,885</b>
<b>TOTAL</b>		<b>4,323,633</b>	<b>6,311,470</b>	<b>4,036,359</b>	<b>4,424,121</b>	<b>4,232,147</b>

# CITY OF WICHITA 2010/2011 ANNUAL BUDGET

<b>DEPARTMENT</b>	<b>23 OFFICE OF CENTRAL INSPECTION</b>
<b>FUND</b>	<b>235 OCI FUND</b>
<b>SERVICE</b>	<b>010901 BUILDING SAFETY AND ENFORCEMENT</b>

POSITION TITLE	2008	2009	2010	RANGE	2009 ADOPTED	2009 REVISED	2010 ADOPTED	2011 APPROVED
Department Director	1	1	1	E81	105,320	109,530	109,530	109,530
Senior Plans Examiner	1	1	1	C52	82,300	85,592	85,592	85,592
Inspection Administrator	1	1	1	C51	63,040	65,557	65,557	65,557
Inspection Administrator	3	3	3	C44	166,420	174,075	174,075	174,075
Division Supervisor	1	1	1	C43	43,450	45,190	45,190	45,190
Plans Examiner	6	6	6	C42	386,430	401,885	401,885	401,885
Fire Protection Systems Specialist	1	1	1	827	68,510	66,968	68,576	68,576
Combination Inspector*	9	9	8	627	419,450	421,415	378,697	331,360
Elec. & Elevator Insp. III ***	7	7	7	627	354,750	353,811	359,335	359,335
Plumbing & Mech. Insp. III**	8	9	9	627	415,390	395,740	396,483	396,483
Sr. Building Permit Examiner	3	3	3	627	175,270	174,387	176,612	176,612
Administrative Aide II	1	1	1	623	49,960	49,213	49,963	49,963
Administrative Secretary	1	1	1	621	45,450	44,858	45,455	45,455
Radio Dispatcher	1	1	1	621	45,450	44,516	45,455	45,455
Account Clerk II	1	1	1	619	41,440	41,007	41,435	41,435
Customer Service Clerk II	4	4	4	619	138,520	138,821	140,231	140,231
Clerk III	1	1	1	617	27,450	27,088	27,449	27,449
<b>Subtotal</b>	<b>50</b>	<b>51</b>	<b>50</b>		<b>2,628,600</b>	<b>2,639,654</b>	<b>2,611,519</b>	<b>2,564,182</b>
Other Regular Salaries					100,910	38,097	39,648	41,580
Savings from scheduled position holds***					0	(153,836)	(208,972)	(208,972)
<b>Total Regular Salaries</b>					<b>2,729,510</b>	<b>2,523,915</b>	<b>2,442,195</b>	<b>2,396,790</b>
<b>Total Special Salaries</b>					<b>600</b>	<b>600</b>	<b>650</b>	<b>650</b>
<b>TOTAL AUTHORIZED POSITIONS</b>	<b>50</b>	<b>51</b>	<b>50</b>					

\* One Combination Inspector is eliminated in 2010 in response to increased efficiencies.

\*\* Plumbing & Mechanical Inspector III added for the 2009 Budget to address increased permit activity in 2008.

\*\*\* Positions subject to hold: Plumbing & Mechanical Inspectors III (3). Positions subject to lay offs: Plumbing & Mechanical Inspector III (1) and Electrical and Elevator Inspector III (1).

# CITY OF WICHITA 2010/2011 ANNUAL BUDGET

<b>DEPARTMENT</b>	<b>23 OFFICE OF CENTRAL INSPECTION</b>
<b>FUND</b>	<b>235 OCI FUND</b>
<b>SERVICE</b>	<b>050201 CODE ENFORCEMENT</b>

		2008 ACTUAL	2009 ADOPTED	2009 REVISED	2010 ADOPTED	2011 APPROVED
110	Regular Salaries	1,270,190	1,369,930	1,191,130	1,205,334	1,204,270
120	Special Salaries	1,466	0	0	0	0
130	Overtime	20,108	0	0	0	0
140	Employee Benefits	332,972	380,380	312,161	361,250	375,622
150	Shrinkage	0	0	-308,007	-278,472	-125,000
<b>Subtotal Salaries and Benefits</b>		<b>1,624,735</b>	<b>1,750,310</b>	<b>1,195,284</b>	<b>1,288,112</b>	<b>1,454,892</b>
210	Utilities	0	0	760	760	760
220	Communications	31,874	25,980	32,305	29,261	33,036
230	Transportation and Training	0	1,350	1,350	1,350	1,350
240	Insurance	8,520	8,790	8,038	8,060	8,790
250	Professional Services	108,738	57,220	52,220	52,220	52,220
260	Data Processing	80,031	68,920	63,504	70,596	81,504
270	Equipment Charges	60,381	70,220	56,898	71,362	81,102
280	Buildings and Grounds Charges	10,817	23,550	20,550	20,550	20,550
290	Other Contractuals	85,955	78,990	77,765	68,206	68,206
<b>Subtotal Contractuals</b>		<b>386,315</b>	<b>335,020</b>	<b>313,390</b>	<b>322,365</b>	<b>347,518</b>
310	Office Supplies	862	0	900	900	900
320	Clothing and Towels	0	0	0	0	0
330	Chemicals	0	0	0	0	0
340	Equipment Parts and Supplies	59	3,000	0	19,293	19,293
350	Materials	3,080	0	0	0	4,000
370	Building Parts and Materials	0	0	0	0	0
380	Non-capitalizable Equipment	0	2,180	2,100	1,520	1,521
390	Other Commodities	0	9,080	5,080	5,080	5,080
<b>Subtotal Commodities</b>		<b>4,001</b>	<b>14,260</b>	<b>8,080</b>	<b>26,793</b>	<b>30,794</b>
410	Land	0	0	0	0	0
420	Buildings	0	0	0	0	0
430	Improvements Other Than Bldgs.	0	0	0	0	0
440	Office Equipment	0	0	0	0	0
450	Vehicular Equipment	0	14,000	0	0	0
460	Operating Equipment	0	0	0	0	0
<b>Subtotal Capital Outlay</b>		<b>0</b>	<b>14,000</b>	<b>0</b>	<b>0</b>	<b>0</b>
510	Interfund Transfers	0	0	0	0	0
520	Debt Service	0	0	0	0	0
530	Other Nonoperating Expenses	0	0	0	0	0
540	Inventory Accounts	0	0	0	0	0
550	Projects Closing Entries	0	0	0	0	0
<b>Subtotal Other</b>		<b>0</b>	<b>0</b>	<b>0</b>	<b>0</b>	<b>0</b>
<b>TOTAL</b>		<b>2,015,051</b>	<b>2,113,590</b>	<b>1,516,754</b>	<b>1,637,270</b>	<b>1,833,204</b>

# CITY OF WICHITA 2010/2011 ANNUAL BUDGET

<b>DEPARTMENT</b>	<b>23</b>	<b>OFFICE OF CENTRAL INSPECTION</b>
<b>FUND</b>	<b>235</b>	<b>OCI FUND</b>
<b>SERVICE</b>	<b>050201</b>	<b>CODE ENFORCEMENT</b>

POSITION TITLE	2008	2009	2010	RANGE	2009 ADOPTED	2009 REVISED	2010 ADOPTED	2011 APPROVED
Inspection Administrator	1	1	1	C51	80,020	83,224	83,224	83,224
Inspection Supervisor	2	2	2	C43	133,960	119,264	119,264	119,264
Combination Neighborhood Inspector *	20	21	21	627	980,140	964,931	972,523	972,523
Combination Inspector	1	1	1	627	55,060	53,974	55,058	55,058
Administrative Aide I	1	1	1	620	43,350	42,617	43,349	43,349
Secretary	1	1	1	619	41,440	40,891	41,435	41,435
<b>Subtotal</b>	<b>26</b>	<b>27</b>	<b>27</b>		<b>1,333,970</b>	<b>1,304,901</b>	<b>1,314,854</b>	<b>1,314,854</b>
Other Regular Salaries					35,960	15,906	16,368	17,280
Savings from scheduled position holds**					0	(129,677)	(125,888)	(127,864)
<b>Total Regular Salaries</b>					<b>1,369,930</b>	<b>1,191,130</b>	<b>1,205,334</b>	<b>1,204,270</b>
<b>TOTAL AUTHORIZED POSITIONS</b>	<b>26</b>	<b>27</b>	<b>27</b>					

\* Additional Combination Neighborhood Inspector in Zoning Section was added in 2009 Adopted Budget.

\*\*Positions subject to scheduled hold: 3 Combination Neighborhood Inspectors.

# CITY OF WICHITA 2010/2011 ANNUAL BUDGET

<b>DEPARTMENT</b>	<b>23 OFFICE OF CENTRAL INSPECTION</b>
<b>FUND</b>	<b>100 GENERAL FUND</b>
<b>SERVICE</b>	<b>050202 CODE ENFORCEMENT</b>

		2008 ACTUAL	2009 ADOPTED	2009 REVISED	2010 ADOPTED	2011 APPROVED
110	Regular Salaries	224,467	237,990	234,536	237,084	239,204
120	Special Salaries	0	0	0	0	0
130	Overtime	2,400	0	0	0	0
140	Employee Benefits	75,594	83,820	79,526	90,923	96,131
150	Shrinkage	0	-26,314	-26,090	-26,360	-26,530
<b>Subtotal Salaries and Benefits</b>		<b>302,460</b>	<b>295,496</b>	<b>287,972</b>	<b>301,647</b>	<b>308,805</b>
210	Utilities	0	0	0	0	0
220	Communications	47,412	67,550	60,372	67,884	68,424
230	Transportation and Training	0	3,950	2,250	0	2,250
240	Insurance	1,060	1,060	1,060	1,060	1,060
250	Professional Services	201,079	258,820	276,729	268,596	294,990
260	Data Processing	8,376	23,510	8,928	9,504	9,504
270	Equipment Charges	23,503	16,790	34,380	33,647	33,647
280	Buildings and Grounds Charges	52,084	0	0	0	0
290	Other Contractuals	10,339	53,740	17,188	15,188	17,188
<b>Subtotal Contractuals</b>		<b>343,854</b>	<b>425,420</b>	<b>400,907</b>	<b>395,879</b>	<b>427,063</b>
310	Office Supplies	0	0	1,000	1,000	1,000
320	Clothing and Towels	0	0	0	0	0
330	Chemicals	0	0	0	0	0
340	Equipment Parts and Supplies	4,854	3,800	0	5,879	5,879
350	Materials	112	300	300	300	300
370	Building Parts and Materials	0	0	0	0	0
380	Non-capitalizable Equipment	968	400	800	800	800
390	Other Commodities	0	100	2,500	2,500	2,500
<b>Subtotal Commodities</b>		<b>5,934</b>	<b>4,600</b>	<b>4,600</b>	<b>10,479</b>	<b>10,479</b>
410	Land	0	0	0	0	0
420	Buildings	0	0	0	0	0
430	Improvements Other Than Bldgs.	0	0	0	0	0
440	Office Equipment	0	0	0	0	0
450	Vehicular Equipment	27,226	0	0	0	0
460	Operating Equipment	0	0	0	0	0
<b>Subtotal Capital Outlay</b>		<b>27,226</b>	<b>0</b>	<b>0</b>	<b>0</b>	<b>0</b>
510	Interfund Transfers	0	0	0	0	0
520	Debt Service	0	0	0	0	0
530	Other Nonoperating Expenses	0	0	0	0	0
540	Inventory Accounts	0	0	0	0	0
550	Projects Closing Entries	0	0	0	0	0
<b>Subtotal Other</b>		<b>0</b>	<b>0</b>	<b>0</b>	<b>0</b>	<b>0</b>
<b>TOTAL</b>		<b>679,474</b>	<b>725,516</b>	<b>693,479</b>	<b>708,005</b>	<b>746,347</b>

# CITY OF WICHITA 2010/2011 ANNUAL BUDGET

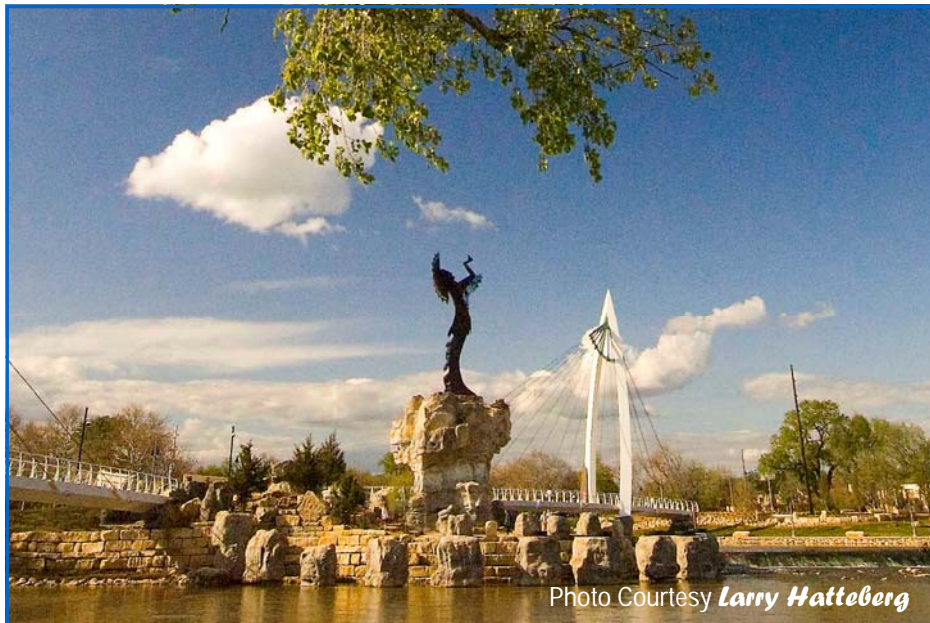
<b>DEPARTMENT</b>	<b>23</b>	<b>OFFICE OF CENTRAL INSPECTION</b>
<b>FUND</b>	<b>100</b>	<b>GENERAL FUND</b>
<b>SERVICE</b>	<b>050202</b>	<b>CODE ENFORCEMENT</b>

POSITION TITLE	2008	2009	2010	RANGE	2009 ADOPTED	2009 REVISED	2010 ADOPTED	2011 APPROVED
Inspection Supervisor	1	1	1	C43	55,310	57,523	57,523	57,523
Combination Neighborhood Inspector	3	3	3	627	136,070	133,722	136,126	138,102
Administrative Aide I	1	1	1	620	39,270	40,254	40,254	40,254
<b>Subtotal</b>	<b>5</b>	<b>5</b>	<b>5</b>		<b>230,650</b>	<b>231,500</b>	<b>233,904</b>	<b>235,880</b>
Other Regular Salaries					7,340	3,036	3,180	3,324
<b>Total Regular Salaries</b>					<b>237,990</b>	<b>234,536</b>	<b>237,084</b>	<b>239,204</b>
<b>TOTAL AUTHORIZED POSITIONS</b>	<b>5</b>	<b>5</b>	<b>5</b>					

# CITY OF WICHITA 2010/2011 ANNUAL BUDGET

<b>DEPARTMENT</b>	<b>23 OFFICE OF CENTRAL INSPECTION</b>
<b>FUND</b>	<b>290 FEDERAL GRANTS</b>
<b>SERVICE</b>	<b>0502032 CODE ENFORCEMENT</b>

		2008 ACTUAL	2009 ADOPTED	2009 REVISED	2010 ADOPTED	2011 APPROVED
110	Regular Salaries	0	0	263,267	220,493	0
120	Special Salaries	0	0	0	0	0
130	Overtime	0	0	0	0	0
140	Employee Benefits	0	0	53,370	52,705	0
150	Shrinkage	0	0	0	0	0
<b>Subtotal Salaries and Benefits</b>		<b>0</b>	<b>0</b>	<b>316,637</b>	<b>273,198</b>	<b>0</b>
210	Utilities	0	0	0	0	0
220	Communications	0	0	729	273	0
230	Transportation and Training	0	0	0	0	0
240	Insurance	0	0	167	62	0
250	Professional Services	194,865	154,890	171,000	171,000	171,000
260	Data Processing	0	0	5,864	4,932	0
270	Equipment Charges	0	0	5,800	3,000	0
280	Buildings and Grounds Charges	40,889	0	0	0	0
290	Other Contractuals	0	0	0	0	0
290	Other Contractuals	0	13,010	0	0	0
<b>Subtotal Contractuals</b>		<b>235,754</b>	<b>167,900</b>	<b>183,560</b>	<b>179,267</b>	<b>171,000</b>
310	Office Supplies	0	0	0	0	0
320	Clothing and Towels	0	0	0	0	0
330	Chemicals	0	0	0	0	0
340	Equipment Parts and Supplies	0	0	0	0	0
350	Materials	0	0	0	0	0
370	Building Parts and Materials	0	0	2,818	2,819	0
380	Non-capitalizable Equipment	0	0	0	0	0
<b>Subtotal Commodities</b>		<b>0</b>	<b>0</b>	<b>2,818</b>	<b>2,819</b>	<b>0</b>
410	Land	0	0	0	0	0
420	Buildings	0	0	0	0	0
430	Improvements Other Than Bldgs.	0	0	0	0	0
440	Office Equipment	0	0	0	0	0
450	Vehicular Equipment	0	0	0	0	0
460	Operating Equipment	0	0	0	0	0
<b>Subtotal Capital Outlay</b>		<b>0</b>	<b>0</b>	<b>0</b>	<b>0</b>	<b>0</b>
510	Interfund Transfers	0	0	0	0	0
520	Debt Service	0	0	0	0	0
530	Other Nonoperating Expenses	0	0	0	0	0
540	Inventory Accounts	0	0	0	0	0
550	Projects Closing Entries	0	0	0	0	0
<b>Subtotal Other</b>		<b>0</b>	<b>0</b>	<b>0</b>	<b>0</b>	<b>0</b>
<b>TOTAL</b>		<b>235,754</b>	<b>167,900</b>	<b>503,015</b>	<b>455,284</b>	<b>171,000</b>



**The Keeper of the Plains sculpture raises his face toward the sky and lifts his arms in supplication to the Great Spirit.**

### **THE KEEPER OF THE PLAINS...**

A symbol of Wichita and Sedgwick County, this majestic 44-foot sculpture was designed by Blackbear Bosin (1921-1980), a Kiowa-Comanche and internationally recognized artist, muralist and designer. On May 18, 1974 a ceremony took place to dedicate the Keeper, which was designated as a Wichita Bicentennial project. The project was rededicated to the community on the 33rd anniversary of that Bicentennial project date. The 5-ton sculpture was placed at the confluence of the little and big Arkansas Rivers, which is considered a sacred site by Native Americans and was home to the Wichita tribe for many years.

A 2006 project to elevate the sculpture on a 30-foot rock promontory so it could be seen from farther away was completed and officially dedicated by Mayor Carl Brewer and the City Council on May 18, 2007.

# CITY OF WICHITA 2010/2011 ANNUAL BUDGET

DEPARTMENT	23 OCI
FUND	100 GENERAL FUND
SERVICE	010802 CHILD CARE LICENSURE

		2008 ACTUAL	2009 ADOPTED	2009 REVISED	2010 ADOPTED	2011 APPROVED
110	Regular Salaries	0	0	0	120,829	120,969
120	Special Salaries	0	0	0	720	720
130	Overtime	0	0	0	0	0
140	Employee Benefits	0	0	0	31,735	32,513
150	Shrinkage	0	0	0	-9,592	-9,638
<b>Subtotal Salaries and Benefits</b>		<b>0</b>	<b>0</b>	<b>0</b>	<b>143,692</b>	<b>144,564</b>
210	Utilities	0	0	0	0	0
220	Communications	0	0	0	50	50
230	Transportation and Training	0	0	0	0	0
240	Insurance	0	0	0	2,390	2,390
250	Professional Services	0	0	0	0	0
260	Data Processing	0	0	0	14,616	14,616
270	Equipment Charges	0	0	0	18,270	18,270
280	Buildings and Grounds Charges	0	0	0	0	0
290	Other Contractuals	0	0	0	0	0
<b>Subtotal Contractuals</b>		<b>0</b>	<b>0</b>	<b>0</b>	<b>35,326</b>	<b>35,326</b>
310	Office Supplies	0	0	0	0	0
320	Clothing and Towels	0	0	0	0	0
330	Chemicals	0	0	0	0	0
340	Equipment Parts and Supplies	0	0	0	3,231	3,231
350	Materials	0	0	0	0	0
370	Building Parts and Materials	0	0	0	0	0
380	Non-capitalizable Equipment	0	0	0	0	0
390	Other Commodities	0	0	0	0	0
<b>Subtotal Commodities</b>		<b>0</b>	<b>0</b>	<b>0</b>	<b>3,231</b>	<b>3,231</b>
410	Land	0	0	0	0	0
420	Buildings	0	0	0	0	0
430	Improvements Other Than Bldgs.	0	0	0	0	0
440	Office Equipment	0	0	0	0	0
450	Vehicular Equipment	0	0	0	0	0
460	Operating Equipment	0	0	0	0	0
<b>Subtotal Capital Outlay</b>		<b>0</b>	<b>0</b>	<b>0</b>	<b>0</b>	<b>0</b>
510	Interfund Transfers	0	0	0	0	0
520	Debt Service	0	0	0	0	0
530	Other Nonoperating Expenses	0	0	0	0	0
540	Inventory Accounts	0	0	0	0	0
550	Projects Closing Entries	0	0	0	0	0
<b>Subtotal Other</b>		<b>0</b>	<b>0</b>	<b>0</b>	<b>0</b>	<b>0</b>
<b>TOTAL</b>		<b>0</b>	<b>0</b>	<b>0</b>	<b>182,249</b>	<b>183,121</b>

# CITY OF WICHITA 2010/2011 ANNUAL BUDGET

<b>DEPARTMENT</b>	<b>23 OFFICE OF CENTRAL INSPECTION</b>
<b>FUND</b>	<b>100 GENERAL FUND</b>
<b>SERVICE</b>	<b>010802 CHILD CARE LICENSURE</b>

POSITION TITLE	2008	2009	2010	Range	2009 ADOPTED	2009 REVISED	2010 ADOPTED	2011 APPROVED
Division Supervisor *	0	0	1	C43	0	0	59,187	59,187
Community Health Nurse I *	0	0	1	927	0	0	59,292	59,292
<b>Subtotal</b>	<b>0</b>	<b>0</b>	<b>2</b>		<b>0</b>	<b>0</b>	<b>118,479</b>	<b>118,479</b>
Other Regular Salaries					0	0	2,350	2,490
<b>Total Regular Salaries</b>					<b>0</b>	<b>0</b>	<b>120,829</b>	<b>120,969</b>
<b>Total Special Salaries</b>					<b>0</b>	<b>0</b>	<b>720</b>	<b>720</b>
<b>TOTAL AUTHORIZED POSITIONS</b>	<b>0</b>	<b>0</b>	<b>2</b>					

\* The Child Care Licensure service is moved from the Environmental Services Department to the Office of Central Inspection in 2010.

# CITY OF WICHITA 2010/2011 ANNUAL BUDGET

DEPARTMENT	23 OCI
FUND	290 FEDERAL GRANTS
SERVICE	010802 CHILD CARE LICENSURE

		2008 ACTUAL	2009 ADOPTED	2009 REVISED	2010 ADOPTED	2011 APPROVED
110	Regular Salaries	0	0	0	172,257	172,337
120	Special Salaries	0	0	0	23,861	23,861
130	Overtime	0	0	0	0	0
140	Employee Benefits	0	0	0	55,776	55,776
150	Shrinkage	0	0	0	0	0
<b>Subtotal Salaries and Benefits</b>		<b>0</b>	<b>0</b>	<b>0</b>	<b>251,894</b>	<b>251,974</b>
210	Utilities	0	0	0	0	0
220	Communications	0	0	0	800	800
230	Transportation and Training	0	0	0	4,500	4,500
240	Insurance	0	0	0	0	0
250	Professional Services	0	0	0	0	0
260	Data Processing	0	0	0	7,488	7,488
270	Equipment Charges	0	0	0	14,400	14,400
280	Buildings and Grounds Charges	0	0	0	0	0
290	Other Contractuals	0	0	0	15,918	15,838
<b>Subtotal Contractuals</b>		<b>0</b>	<b>0</b>	<b>0</b>	<b>43,106</b>	<b>43,026</b>
310	Office Supplies	0	0	0	0	0
320	Clothing and Towels	0	0	0	0	0
330	Chemicals	0	0	0	0	0
340	Equipment Parts and Supplies	0	0	0	0	0
350	Materials	0	0	0	0	0
370	Building Parts and Materials	0	0	0	0	0
380	Non-capitalizable Equipment	0	0	0	0	0
390	Other Commodities	0	0	0	0	0
<b>Subtotal Commodities</b>		<b>0</b>	<b>0</b>	<b>0</b>	<b>0</b>	<b>0</b>
410	Land	0	0	0	0	0
420	Buildings	0	0	0	0	0
430	Improvements Other Than Bldgs.	0	0	0	0	0
440	Office Equipment	0	0	0	0	0
450	Vehicular Equipment	0	0	0	0	0
460	Operating Equipment	0	0	0	0	0
<b>Subtotal Capital Outlay</b>		<b>0</b>	<b>0</b>	<b>0</b>	<b>0</b>	<b>0</b>
510	Interfund Transfers	0	0	0	0	0
520	Debt Service	0	0	0	0	0
530	Other Nonoperating Expenses	0	0	0	0	0
540	Inventory Accounts	0	0	0	0	0
550	Projects Closing Entries	0	0	0	0	0
<b>Subtotal Other</b>		<b>0</b>	<b>0</b>	<b>0</b>	<b>0</b>	<b>0</b>
<b>TOTAL</b>		<b>0</b>	<b>0</b>	<b>0</b>	<b>295,000</b>	<b>295,000</b>

# CITY OF WICHITA 2010/2011 ANNUAL BUDGET

<b>DEPARTMENT</b>	<b>23 OFFICE OF CENTRAL INSPECTION</b>
<b>FUND</b>	<b>290 FEDERAL GRANTS</b>
<b>SERVICE</b>	<b>010802 CHILD CARE LICENSURE</b>

POSITION TITLE	2008	2009	2010	Range	2009 ADOPTED	2009 REVISED	2010 ADOPTED	2011 APPROVED
Community Health Nurse II *	0	0	1	929	0	0	41,962	41,962
Community Health Nurse I *	0	0	2	927	0	0	86,023	86,023
Counselor *	0	0	1	927	0	0	43,012	43,012
Clerk II *	0	0	1	615	0	0	0	0
<b>Subtotal</b>	<b>0</b>	<b>0</b>	<b>5</b>		<b>0</b>	<b>0</b>	<b>170,997</b>	<b>170,997</b>
Other Regular Salaries					0	0	1,260	1,340
<b>Total Regular Salaries</b>					<b>0</b>	<b>0</b>	<b>172,257</b>	<b>172,337</b>
Community Health Nurse I (PT-50%) *	0	0	1	927	0	0	22,421	22,421
Other Special Salaries					0	0	1,440	1,440
<b>Total Special Salaries</b>					<b>0</b>	<b>0</b>	<b>23,861</b>	<b>23,861</b>
<b>TOTAL AUTHORIZED POSITIONS</b>	<b>0</b>	<b>0</b>	<b>6</b>					

\* The Child Care Licensure service is moved from the Environmental Services Department to the Office of Central Inspection in 2010.

# CITY OF WICHITA 2010/2011 ANNUAL BUDGET

DEPARTMENT	23 OCI
FUND	100 GENERAL FUND
SERVICE	010803 FOOD PROTECTION & TOBACCO CONTROL

		2008 ACTUAL	2009 ADOPTED	2009 REVISED	2010 ADOPTED	2011 APPROVED
110	Regular Salaries	0	0	0	490,037	490,325
120	Special Salaries	0	0	0	2,880	2,880
130	Overtime	0	0	0	5,000	5,000
140	Employee Benefits	0	0	0	178,929	186,785
150	Shrinkage	0	0	0	-38,201	-38,608
<b>Subtotal Salaries and Benefits</b>		<b>0</b>	<b>0</b>	<b>0</b>	<b>638,645</b>	<b>646,382</b>
210	Utilities	0	0	0	0	0
220	Communications	0	0	0	5,574	5,574
230	Transportation and Training	0	0	0	4,080	4,080
240	Insurance	0	0	0	3,350	3,350
250	Professional Services	0	0	0	1,800	1,800
260	Data Processing	0	0	0	30,828	30,828
270	Equipment Charges	0	0	0	25,892	25,892
280	Buildings and Grounds Charges	0	0	0	0	0
290	Other Contractuals	0	0	0	5,500	5,500
<b>Subtotal Contractuals</b>		<b>0</b>	<b>0</b>	<b>0</b>	<b>77,024</b>	<b>77,024</b>
310	Office Supplies	0	0	0	1,300	1,300
320	Clothing and Towels	0	0	0	0	0
330	Chemicals	0	0	0	200	200
340	Equipment Parts and Supplies	0	0	0	5,673	5,673
350	Materials	0	0	0	0	0
370	Building Parts and Materials	0	0	0	0	0
380	Non-capitalizable Equipment	0	0	0	2,340	2,340
390	Other Commodities	0	0	0	650	650
<b>Subtotal Commodities</b>		<b>0</b>	<b>0</b>	<b>0</b>	<b>10,163</b>	<b>10,163</b>
410	Land	0	0	0	0	0
420	Buildings	0	0	0	0	0
430	Improvements Other Than Bldgs.	0	0	0	0	0
440	Office Equipment	0	0	0	0	0
450	Vehicular Equipment	0	0	0	0	0
460	Operating Equipment	0	0	0	0	0
<b>Subtotal Capital Outlay</b>		<b>0</b>	<b>0</b>	<b>0</b>	<b>0</b>	<b>0</b>
510	Interfund Transfers	0	0	0	0	0
520	Debt Service	0	0	0	0	0
530	Other Nonoperating Expenses	0	0	0	0	0
540	Inventory Accounts	0	0	0	0	0
550	Projects Closing Entries	0	0	0	0	0
<b>Subtotal Other</b>		<b>0</b>	<b>0</b>	<b>0</b>	<b>0</b>	<b>0</b>
<b>TOTAL</b>		<b>0</b>	<b>0</b>	<b>0</b>	<b>725,832</b>	<b>733,569</b>

# CITY OF WICHITA 2010/2011 ANNUAL BUDGET

<b>DEPARTMENT</b>	<b>23 OFFICE OF CENTRAL INSPECTION</b>
<b>FUND</b>	<b>100 GENERAL FUND</b>
<b>SERVICE</b>	<b>010803 FOOD PROTECTION AND TOBACCO CONTROL</b>

POSITION TITLE	2008	2009	2010	Range	2009 ADOPTED	2009 REVISED	2010 ADOPTED	2011 APPROVED
<i>Food Protection:</i>								
Division Supervisor *	0	0	1	C43	0	0	45,190	45,190
Public Health Sanitarian I *	0	0	6	625	0	0	271,000	271,000
<b>Subtotal</b>	<b>0</b>	<b>0</b>	<b>7</b>		<b>0</b>	<b>0</b>	<b>316,190</b>	<b>316,190</b>
<i>Tobacco Control:</i>								
Public Health Sanitarian I *	0	0	1	625	0	0	41,966	41,966
<b>Subtotal</b>	<b>0</b>	<b>0</b>	<b>1</b>		<b>0</b>	<b>0</b>	<b>41,966</b>	<b>41,966</b>
<i>Public Health Administration</i>								
Division Manager **	0	0	1	D63	0	0	66,200	66,200
Customer Service Clerk II **	0	0	2	619	0	0	61,733	61,733
<b>Subtotal</b>	<b>0</b>	<b>0</b>	<b>3</b>		<b>0</b>	<b>0</b>	<b>127,933</b>	<b>127,933</b>
Other Regular Salaries					0	0	3,948	4,236
<b>Total Regular Salaries</b>					<b>0</b>	<b>0</b>	<b>490,037</b>	<b>490,325</b>
Other Special Salaries					0	0	2,880	2,880
<b>Total Special Salaries</b>					<b>0</b>	<b>0</b>	<b>2,880</b>	<b>2,880</b>
<b>TOTAL AUTHORIZED POSITIONS</b>	<b>0</b>	<b>0</b>	<b>11</b>					

\* The Food Safety and Tobacco Control service is moved from the Environmental Services Department to the Office of Central Inspection in 2010.

\*\* Three staff members from the Environmental Services Department Administration Division are moved to the Office of Central Inspection in 2010 to carry out support services associated with the Child Care Licensure and Food Safety and Tobacco Control services.