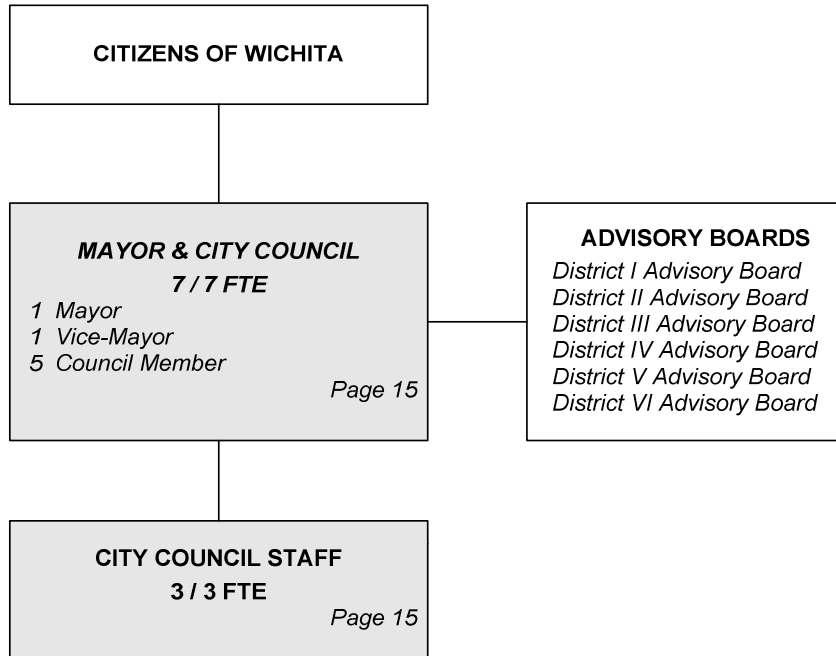


# CITY OF WICHITA 2010/2011 ANNUAL BUDGET

## Departmental Organization Chart

### CITY COUNCIL



Total Positions/ Full-Time Equivalent = **10 / 10 FTE**

# CITY OF WICHITA 2010/2011 ANNUAL BUDGET

DEPARTMENT	01 CITY COUNCIL
FUND	100 GENERAL FUND
SERVICE	060301 CITY COUNCIL

		2008 ACTUAL	2009 ADOPTED	2009 REVISED	2010 ADOPTED	2011 APPROVED
110	Regular Salaries	420,043	419,390	421,872	422,553	422,663
120	Special Salaries	21,439	21,000	21,000	21,000	21,000
130	Overtime	3,368	0	0	0	0
140	Employee Benefits	102,070	121,400	117,956	132,036	139,505
150	Shrinkage	0	0	0	0	0
<b>Subtotal Salaries and Benefits</b>		<b>546,920</b>	<b>561,790</b>	<b>560,828</b>	<b>575,589</b>	<b>583,168</b>
210	Utilities	0	0	0	0	0
220	Communications	16,110	15,550	17,710	17,710	17,710
230	Transportation and Training	49,441	35,000	35,000	34,400	34,400
240	Insurance	0	0	0	0	0
250	Professional Services	11,972	16,240	20,000	7,000	7,000
260	Data Processing	48,470	44,660	42,070	40,596	40,596
270	Equipment Charges	422	0	0	0	0
280	Buildings and Grounds Charges	40	0	0	0	0
290	Other Contractuals	9,973	4,690	4,690	4,112	4,112
<b>Subtotal Contractuals</b>		<b>136,428</b>	<b>116,140</b>	<b>119,470</b>	<b>103,818</b>	<b>103,818</b>
310	Office Supplies	4,940	1,500	1,500	1,500	1,500
320	Clothing and Towels	1,303	0	0	0	0
330	Chemicals	0	0	0	0	0
340	Equipment Parts and Supplies	0	0	0	0	0
350	Materials	46	0	0	0	0
370	Building Parts and Materials	261	0	0	0	0
380	Non-capitalizable Equipment	102	0	0	0	0
390	Other Commodities	18,811	19,450	19,450	14,100	14,100
<b>Subtotal Commodities</b>		<b>25,463</b>	<b>20,950</b>	<b>20,950</b>	<b>15,600</b>	<b>15,600</b>
410	Land	0	0	0	0	0
420	Buildings	0	0	0	0	0
430	Improvements Other Than Bldgs.	0	0	0	0	0
440	Office Equipment	0	0	0	0	0
450	Vehicular Equipment	0	0	0	0	0
460	Operating Equipment	0	0	0	0	0
<b>Subtotal Capital Outlay</b>		<b>0</b>	<b>0</b>	<b>0</b>	<b>0</b>	<b>0</b>
510	Interfund Transfers	0	0	0	0	0
520	Debt Service	0	0	0	0	0
530	Other Nonoperating Expenses	0	7,750	10,000	0	0
540	Inventory Accounts	0	0	0	0	0
550	Projects Closing Entries	0	0	0	0	0
<b>Subtotal Other</b>		<b>0</b>	<b>7,750</b>	<b>10,000</b>	<b>0</b>	<b>0</b>
<b>TOTAL</b>		<b>708,811</b>	<b>706,630</b>	<b>711,248</b>	<b>695,007</b>	<b>702,586</b>

# CITY OF WICHITA 2010/2011 ANNUAL BUDGET

<b>DEPARTMENT</b>	<b>01 CITY COUNCIL</b>
<b>FUND</b>	<b>100 GENERAL FUND</b>
<b>SERVICE</b>	<b>060301 CITY COUNCIL</b>

POSITION TITLE	2008	2009	2010	RANGE	2009 ADOPTED	2009 REVISED	2010 ADOPTED	2011 APPROVED
Mayor	1	1	1		82,660	82,654	82,654	82,654
Vice-Mayor	1	1	1		34,870	34,866	34,866	34,866
City Council Members	5	5	5		174,350	174,329	174,329	174,329
Executive Assistant to the Mayor and City Council	1	1	1	C41	53,490	55,621	55,621	55,621
Administrative Secretary	2	2	2	621	72,730	73,113	73,703	73,703
<b>Subtotal</b>	<b>10</b>	<b>10</b>	<b>10</b>		<b>418,100</b>	<b>420,582</b>	<b>421,173</b>	<b>421,173</b>
Other Regular Salaries					1,290	1,290	1,380	1,490
<b>Total Regular Salaries</b>					<b>419,390</b>	<b>421,872</b>	<b>422,553</b>	<b>422,663</b>
<b>Total Special Salaries</b>					<b>21,000</b>	<b>21,000</b>	<b>21,000</b>	<b>21,000</b>
<b>TOTAL AUTHORIZED POSITIONS</b>	<b>10</b>	<b>10</b>	<b>10</b>					