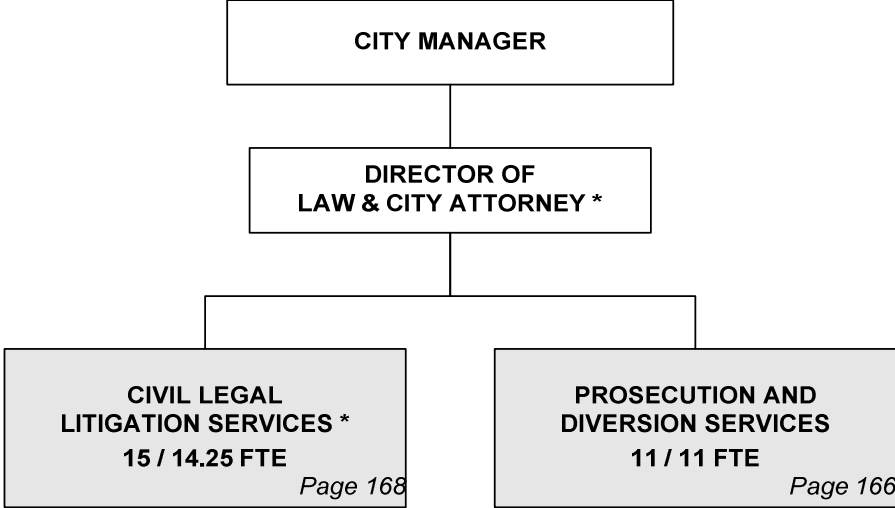


CITY OF WICHITA 2009/2010 ANNUAL BUDGET

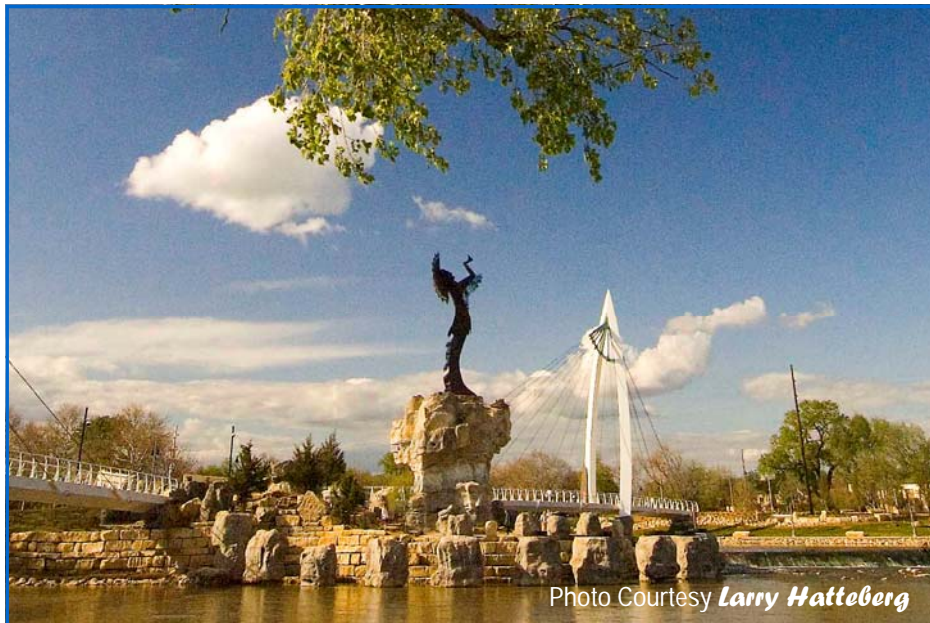
Departmental Organization Chart

LAW



** Position included with Civil Legal Litigation Services*

Total Positions/Full-Time Equivalent = 26 / 25.25 FTE



The Keeper of the Plains sculpture raises his face toward the sky and lifts his arms in supplication to the Great Spirit.

THE KEEPER OF THE PLAINS...

A symbol of Wichita and Sedgwick County, this majestic 44-foot sculpture was designed by Blackbear Bosin (1921-1980), a Kiowa-Comanche and internationally recognized artist, muralist and designer. On May 18, 1974 a ceremony took place to dedicate the Keeper, which was designated as a Wichita Bicentennial project. The project was rededicated to the community on the 33rd anniversary of that Bicentennial project date. The 5-ton sculpture was placed at the confluence of the little and big Arkansas Rivers, which is considered a sacred site by Native Americans and was home to the Wichita tribe for many years.

A 2006 project to elevate the sculpture on a 30-foot rock promontory so it could be seen from farther away was completed and officially dedicated by Mayor Carl Brewer and the City Council on May 18, 2007.

CITY OF WICHITA 2009/2010 ANNUAL BUDGET

FUND **100 GENERAL**
DEPARTMENT **04 LAW DEPARTMENT**

COMBINED DETAIL SUMMARY

		2007 ACTUAL	2008 ADOPTED	2008 REVISED	2009 ADOPTED	2010 APPROVED
110	Regular Salaries	1,588,399	1,730,100	1,722,647	1,736,815	1,741,842
120	Special Salaries	4,468	3,930	3,969	3,969	3,969
130	Overtime	0	0	0	0	0
140	Employee Benefits	321,620	388,160	376,083	402,532	420,971
150	Shrinkage	0	0	0	-42,767	-43,181
Subtotal Salaries and Benefits		1,914,487	2,122,190	2,102,699	2,100,549	2,123,601
210	Utilities	0	0	0	0	0
220	Communications	23,836	24,460	24,385	24,385	24,385
230	Transportation and Training	16,749	10,050	35,050	35,050	35,050
240	Insurance	0	0	0	0	0
250	Professional Services	121,379	76,990	74,950	74,950	74,950
260	Data Processing	59,807	73,130	73,130	71,403	71,403
270	Equipment Charges	776	1,590	1,000	1,000	1,000
280	Buildings and Grounds Charges	0	4,000	0	0	0
290	Other Contractuals	63,928	58,820	64,320	64,320	64,320
Subtotal Contractuals		286,476	249,040	272,835	271,108	271,108
310	Office Supplies	4,643	6,920	6,920	6,920	6,920
320	Clothing and Towels	0	0	0	0	0
330	Chemicals	0	0	0	0	0
340	Equipment Parts and Supplies	0	0	0	0	0
350	Materials	0	0	0	0	0
370	Building Parts and Materials	0	250	0	0	0
380	Non-capitalizable Equipment	21,750	0	0	0	0
390	Other Commodities	88	0	0	0	0
Subtotal Commodities		26,481	7,170	6,920	6,920	6,920
410	Land	0	0	0	0	0
420	Buildings	0	0	0	0	0
430	Improvements Other Than Bldgs.	0	0	0	0	0
440	Office Equipment	0	0	0	0	0
450	Vehicular Equipment	0	0	0	0	0
460	Operating Equipment	0	0	0	0	0
Subtotal Capital Outlay		0	0	0	0	0
510	Interfund Transfers	0	0	0	0	0
520	Debt Service	0	0	0	0	0
530	Other Non-operating Expenses	0	0	0	0	0
540	Inventory Accounts	0	0	0	0	0
550	Projects Closing Entries	0	0	0	0	0
Subtotal Other		0	0	0	0	0
TOTAL		2,227,444	2,378,400	2,382,454	2,378,577	2,401,629

CITY OF WICHITA 2009/2010 ANNUAL BUDGET

DEPARTMENT	04 LAW
FUND	100 GENERAL FUND
SERVICE	010603 PROSECUTION AND DIVERSION SERVICES
GOAL	1 SAFE AND SECURE

		2007 ACTUAL	2008 ADOPTED	2008 REVISED	2009 ADOPTED	2010 APPROVED
110	Regular Salaries	514,624	612,630	632,789	636,530	638,022
120	Special Salaries	0	0	0	0	0
130	Overtime	0	0	0	0	0
140	Employee Benefits	107,492	153,550	138,740	147,737	154,168
150	Shrinkage	0	0	0	-25,876	-26,151
Subtotal Salaries and Benefits		622,116	766,180	771,529	758,391	766,039
210	Utilities	0	0	0	0	0
220	Communications	4,146	11,210	11,060	11,060	11,060
230	Transportation and Training	6,802	800	25,800	25,800	25,800
240	Insurance	0	0	0	0	0
250	Professional Services	84,947	74,390	74,390	74,390	74,390
260	Data Processing	27,654	32,790	32,790	30,791	30,791
270	Equipment Charges	0	0	0	0	0
280	Buildings and Grounds Charges	0	0	0	0	0
290	Other Contractuals	11,396	27,470	27,470	27,470	27,470
Subtotal Contractuals		134,944	146,660	171,510	169,511	169,511
310	Office Supplies	1,474	2,520	2,520	2,520	2,520
320	Clothing and Towels	0	0	0	0	0
330	Chemicals	0	0	0	0	0
340	Equipment Parts and Supplies	0	0	0	0	0
350	Materials	0	0	0	0	0
370	Building Parts and Materials	0	0	0	0	0
380	Non-capitalizable Equipment	21,750	0	0	0	0
390	Other Commodities	30	0	0	0	0
Subtotal Commodities		23,254	2,520	2,520	2,520	2,520
410	Land	0	0	0	0	0
420	Buildings	0	0	0	0	0
430	Improvements Other Than Bldgs.	0	0	0	0	0
440	Office Equipment	0	0	0	0	0
450	Vehicular Equipment	0	0	0	0	0
460	Operating Equipment	0	0	0	0	0
Subtotal Capital Outlay		0	0	0	0	0
510	Interfund Transfers	0	0	0	0	0
520	Debt Service	0	0	0	0	0
530	Other Non-operating Expenses	0	0	0	0	0
540	Inventory Accounts	0	0	0	0	0
550	Projects Closing Entries	0	0	0	0	0
Subtotal Other		0	0	0	0	0
TOTAL		780,314	915,360	945,559	930,422	938,070

CITY OF WICHITA 2009/2010 ANNUAL BUDGET

DEPARTMENT	04	LAW	
FUND	100	GENERAL FUND	
SERVICE	010603	PROSECUTION AND DIVERSION SERVICES	
GOAL	1	SAFE AND SECURE	

POSITION TITLE	2007	2008	2009	RANGE	2008 ADOPTED	2008 REVISED	2009 ADOPTED	2010 APPROVED
Chief Prosecutor	1	1	1	D61	88,400	93,784	93,784	93,784
Assistant City Attorney II	2	2	2	C44	129,190	136,922	136,922	136,922
Assistant City Attorney I	5	5	5	C43	277,080	282,354	282,354	282,354
Program Specialist	1	1	1	C41	57,230	60,005	60,005	60,005
Secretary	2	2	2	619	57,070	57,109	60,850	62,342
Subtotal	11	11	11		608,970	630,173	633,914	635,406
Other Regular Salaries					3,660	2,616	2,616	2,616
Total Regular Salaries					612,630	632,789	636,530	638,022
TOTAL AUTHORIZED POSITIONS	11	11	11					

CITY OF WICHITA 2009/2010 ANNUAL BUDGET

DEPARTMENT	04 LAW
FUND	100 GENERAL FUND
SERVICE	060304 CIVIL LEGAL LITIGATION SERVICES
GOAL	6 INTERNAL PERSPECTIVE

		2007 ACTUAL	2008 ADOPTED	2008 REVISED	2009 ADOPTED	2010 APPROVED
110	Regular Salaries	1,073,774	1,117,470	1,089,858	1,100,285	1,103,820
120	Special Salaries	4,468	3,930	3,969	3,969	3,969
130	Overtime	0	0	0	0	0
140	Employee Benefits	214,128	234,610	237,343	254,795	266,803
150	Shrinkage	0	0	0	-16,891	-17,030
Subtotal Salaries and Benefits		1,292,371	1,356,010	1,331,170	1,342,158	1,357,562
210	Utilities	0	0	0	0	0
220	Communications	19,691	13,250	13,325	13,325	13,325
230	Transportation and Training	9,948	9,250	9,250	9,250	9,250
240	Insurance	0	0	0	0	0
250	Professional Services	36,432	2,600	560	560	560
260	Data Processing	32,153	40,340	40,340	40,612	40,612
270	Equipment Charges	776	1,590	1,000	1,000	1,000
280	Buildings and Grounds Charges	0	4,000	0	0	0
290	Other Contractuals	52,532	31,350	36,850	36,850	36,850
Subtotal Contractuals		151,532	102,380	101,325	101,597	101,597
310	Office Supplies	3,169	4,400	4,400	4,400	4,400
320	Clothing and Towels	0	0	0	0	0
330	Chemicals	0	0	0	0	0
340	Equipment Parts and Supplies	0	0	0	0	0
350	Materials	0	0	0	0	0
370	Building Parts and Materials	0	250	0	0	0
380	Non-capitalizable Equipment	0	0	0	0	0
390	Other Commodities	58	0	0	0	0
Subtotal Commodities		3,228	4,650	4,400	4,400	4,400
410	Land	0	0	0	0	0
420	Buildings	0	0	0	0	0
430	Improvements Other Than Bldgs.	0	0	0	0	0
440	Office Equipment	0	0	0	0	0
450	Vehicular Equipment	0	0	0	0	0
460	Operating Equipment	0	0	0	0	0
Subtotal Capital Outlay		0	0	0	0	0
510	Interfund Transfers	0	0	0	0	0
520	Debt Service	0	0	0	0	0
530	Other Non-operating Expenses	0	0	0	0	0
540	Inventory Accounts	0	0	0	0	0
550	Projects Closing Entries	0	0	0	0	0
Subtotal Other		0	0	0	0	0
TOTAL		1,447,130	1,463,040	1,436,895	1,448,155	1,463,559

CITY OF WICHITA 2009/2010 ANNUAL BUDGET

DEPARTMENT	04	LAW
FUND	100	GENERAL FUND
SERVICE	060304	CIVIL LEGAL LITIGATION SERVICES
GOAL	6	INTERNAL PERSPECTIVE

POSITION TITLE	2007	2008	2009	RANGE	2008 ADOPTED	2008 REVISED	2009 ADOPTED	2010 APPROVED
Department Director	1	1	1	E83	138,700	147,150	147,150	147,150
Chief Deputy City Attorney	1	1	1	D72	114,200	120,563	120,563	120,563
Deputy City Attorney *	3	3	3	D71	316,830	311,336	311,336	311,336
Assistant City Attorney III	4	4	4	C45	347,260	325,705	325,705	325,705
Administrative Aide II	1	1	1	623	34,790	35,520	37,837	38,775
Administrative Secretary	1	1	1	621	36,960	34,472	36,733	37,630
Legal Secretary	3	3	3	620	115,850	105,308	111,157	112,858
Subtotal	14	14	14		1,104,590	1,080,054	1,090,481	1,094,016
Other Regular Salaries					12,880	9,804	9,804	9,804
Total Regular Salaries					1,117,470	1,089,858	1,100,285	1,103,820
Other Special Salaries					2,760	2,760	2,760	2,760
Community Service Worker (PT.25)**	1	1	1	410	1,170	1,209	1,209	1,209
Total Special Salaries					3,930	3,969	3,969	3,969
TOTAL AUTHORIZED POSITIONS	15	15	15					

* One Deputy City Atty is reimbursed 75% by the Economic Development Fund; One Deputy City Attorney is reimbursed 50% from the Pension Fund.

** The Community Service Worker position is a summer intern with costs reimbursed by the Wichita Bar Association.