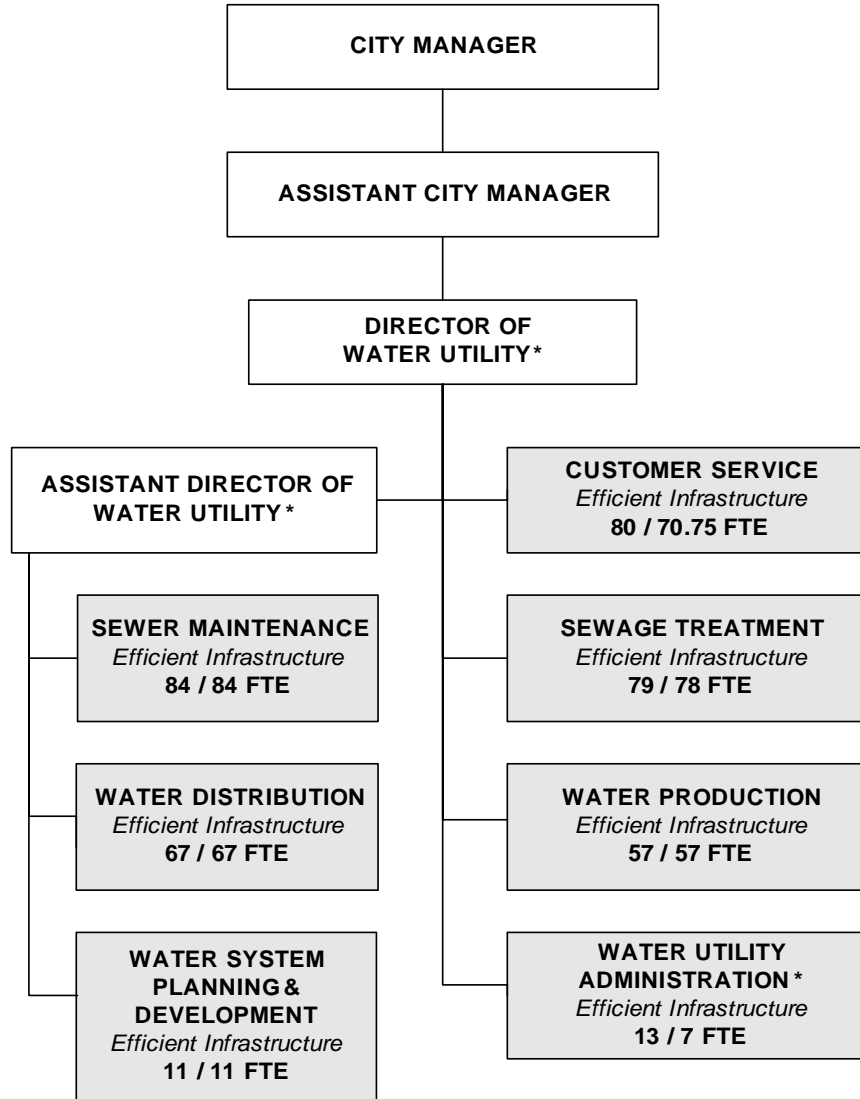


CITY OF WICHITA 2008/2009 ANNUAL BUDGET

Departmental Organization Chart

WICHITA WATER UTILITY



* Positions included with Water Utility Administration

Total Positions/ Full-Time Equivalent = 391 / 374.75 FTE

CITY OF WICHITA 2008/2009 ANNUAL BUDGET

MULTI-YEAR FUND OVERVIEW - WATER UTILITY

FUND: 540

	2006 ACTUAL	2007 ADOPTED	2007 REVISED	2008 ADOPTED	2009 APPROVED
Budgeted revenues:					
Charges for services and sales	39,247,934	38,378,140	39,836,160	42,400,450	44,130,280
Interest earnings	1,281,474	1,750,000	1,750,000	2,000,000	2,000,000
Installation, bulk sales, svc. charges	6,600,979	5,052,710	5,594,490	5,637,610	5,831,860
Total budgeted revenues	47,130,387	45,180,850	47,180,650	50,038,060	51,962,140
Budgeted expenditures:					
Personal services	8,286,938	8,332,220	8,384,900	8,806,890	9,193,080
Contractual services	7,147,105	7,058,620	7,677,850	8,185,920	7,650,030
Water billing services	273,450	280,720	231,060	237,310	244,170
Administrative charge	663,560	663,560	758,110	758,110	758,110
Materials and supplies	3,127,800	2,821,200	3,181,160	3,271,650	3,348,800
Payments in lieu of franchise fees	1,998,410	2,143,730	2,292,450	2,271,540	2,402,170
Principal - debt service	7,146,145	9,091,450	8,181,460	9,984,820	10,641,010
Interest - debt service	6,621,954	7,613,190	7,589,170	8,775,240	8,462,310
Capital outlay	3,331,590	3,594,280	4,087,650	4,592,050	4,732,790
Transfers:					
Public safety service fee (GF)	1,583,560	1,721,060	1,685,330	1,744,320	1,805,370
Tort liability (Self Insurance)	119,000	119,000	119,000	119,000	119,000
Water conservation program (GF)	186,313	190,000	190,000	190,000	190,000
Safety Officer (Self Insurance)	72,790	74,120	74,120	75,670	75,670
Delinquent specials (Debt Service)	134,050	134,050	134,050	134,050	134,050
GIS/IVR/SCADA(IT/IS)	174,100	174,100	174,100	174,100	174,100
Engineering overhead charges	0	6,000	6,000	6,000	6,000
Contingency	0	1,000,000	1,000,000	1,000,000	1,000,000
Bad debt expense	219,178	433,000	433,000	433,000	433,000
Bond amortization expense	(287,259)	33,380	33,380	33,380	33,380
Unamortized deferred refunding	178,536	40,630	178,540	178,540	178,540
Inventory	254,522	1,500,000	2,600,000	2,000,000	2,000,000
Total budgeted expenditures	41,231,742	47,024,310	49,011,330	52,971,590	53,581,580
Budgeted income/(loss)	5,898,645	(1,843,460)	(1,830,680)	(2,933,530)	(1,619,440)
Adjustments for GAAP:					
Depreciation	(10,070,226)	(9,462,990)	(9,462,990)	(9,746,880)	(10,039,290)
Debt service principal	7,146,145	7,214,680	7,146,150	8,181,460	9,091,450
Capital outlay	3,331,590	3,905,700	4,087,650	4,592,050	4,732,790
Change in accruals	0	0	0	0	0
Total adjustments	407,509	1,657,390	1,770,810	3,026,630	3,784,950
Increase(decrease) in net assets	6,306,154	(186,070)	(3,601,490)	(5,960,160)	(5,404,390)
Net assets January 1	277,666,987	277,779,057	283,973,141	280,371,651	274,411,491
Net assets December 31	283,973,141	277,592,987	280,371,651	274,411,491	269,007,101

CITY OF WICHITA 2008/2009 ANNUAL BUDGET

FUND **540 - WATER UTILITY**
DEPARTMENT **18 - WICHITA WATER UTILITIES**

COMBINED DETAIL SUMMARY

		2006 ACTUAL	2007 ADOPTED	2007 REVISED	2008 ADOPTED	2009 APPROVED
110	Regular Salaries	4,869,600	6,468,930	6,385,070	6,712,920	6,907,090
120	Special Salaries	605,877	101,890	77,510	71,040	63,580
130	Overtime	669,825	265,000	265,000	265,000	265,000
140	Employee Benefits	2,141,635	2,623,320	2,680,180	2,877,360	3,128,580
150	Planned Savings	0	-104,060	0	0	0
Subtotal Personal Services		8,286,938	9,355,080	9,407,760	9,926,320	10,364,250
210	Utilities	3,121,541	3,193,880	3,208,620	3,216,620	3,217,620
220	Communications	745,429	714,970	753,210	780,230	808,250
230	Transportation and Training	110,077	126,930	166,550	149,890	154,570
240	Insurance	182,097	174,850	154,090	154,090	154,090
250	Professional Services	1,536,188	2,272,750	1,779,080	2,258,460	1,636,010
260	Data Processing	576,957	617,100	639,870	646,280	646,280
270	Equipment Charges	617,227	508,120	568,190	621,060	660,260
280	Buildings and Grounds Charges	105,172	71,370	36,450	64,880	64,880
290	Other Contractuals	1,307,291	1,454,930	2,943,960	2,872,830	2,875,350
Subtotal Contractuals		8,301,979	9,134,900	10,250,020	10,764,340	10,217,310
310	Office Supplies	91,592	68,650	80,150	81,690	81,690
320	Clothing and Towels	38,250	40,520	40,520	40,520	40,520
330	Chemicals	1,464,794	1,496,930	1,748,970	1,826,720	1,903,870
340	Equipment Parts and Supplies	1,611,084	1,646,890	1,697,830	1,699,770	1,699,770
350	Materials	323,450	300,510	343,980	366,980	366,980
370	Building Parts and Materials	47,828	43,160	43,160	60,000	60,000
380	Non-capitalizable Equipment	426,337	333,310	328,240	295,480	295,480
390	Other Commodities	-998,879	-65,650	-58,570	-56,390	-56,390
Subtotal Commodities		3,004,456	3,864,320	4,224,280	4,314,770	4,391,920
410	Land	0	0	0	0	0
420	Buildings	0	0	0	0	0
430	Improvements Other Than Bldgs.	0	0	0	0	0
440	Office Equipment	22,733	10,500	24,500	35,000	10,000
450	Vehicular Equipment	438,764	626,670	545,300	911,500	1,084,000
460	Operating Equipment	2,870,094	192,130	301,870	333,000	292,500
Subtotal Capital Outlay		3,331,590	829,300	871,670	1,279,500	1,386,500
510	Interfund Transfers	2,269,813	2,412,330	2,376,600	2,437,140	2,498,190
520	Debt Service	13,661,230	16,778,650	15,982,550	18,971,980	19,315,240
530	Other Nonoperating Expenses	2,121,214	3,149,730	3,298,450	3,277,540	3,408,170
540	Inventory Accounts	254,522	1,500,000	2,600,000	2,000,000	2,000,000
550	Projects Closing Entries	0	0	0	0	0
Subtotal Other		18,306,779	23,840,710	24,257,600	26,686,660	27,221,600
TOTAL		41,231,742	47,024,310	49,011,330	52,971,590	53,581,580

CITY OF WICHITA 2008/2009 ANNUAL BUDGET

GOAL	3 EFFICIENT INFRASTRUCTURE
PROGRAM	2 ENGINEERING
SERVICE	030202 WATER SYSTEM PLANNING AND DEVELOPMENT
DEPARTMENT	18 WATER AND SEWER DEPARTMENT
FUND	540 WATER UTILITY FUND

		2006 ACTUAL	2007 ADOPTED	2007 REVISED	2008 ADOPTED	2009 APPROVED
110	Regular Salaries	200,804	206,040	204,230	205,930	206,080
120	Special Salaries	678	700	700	700	700
130	Overtime	48,672	10,000	10,000	10,000	10,000
140	Employee Benefits	131,072	134,500	134,950	141,560	151,440
150	Planned Savings	0	-7,080	0	0	0
Subtotal Personal Services		381,225	344,160	349,880	358,190	368,220
210	Utilities	0	0	0	0	0
220	Communications	3,086	3,000	2,190	2,190	2,190
230	Transportation and Training	0	0	0	0	0
240	Insurance	0	1,400	0	0	0
250	Professional Services	50	0	0	0	0
260	Data Processing	79,577	126,130	124,910	113,180	113,180
270	Equipment Charges	12,505	12,530	12,530	12,530	12,530
280	Buildings and Grounds Charges	0	0	0	0	0
290	Other Contractuals	-31,076	-23,830	-22,170	-11,300	-11,300
Subtotal Contractuals		64,142	119,230	117,460	116,600	116,600
310	Office Supplies	6,477	3,900	6,900	7,690	7,690
320	Clothing and Towels	341	600	600	600	600
330	Chemicals	0	0	0	0	0
340	Equipment Parts and Supplies	1,398	6,560	6,560	4,760	4,760
350	Materials	3,036	3,650	3,650	3,650	3,650
370	Building Parts and Materials	0	0	0	0	0
380	Non-capitalizable Equipment	1,791	10,100	10,140	10,140	10,140
390	Other Commodities	-11,707	-10,060	-11,580	-11,070	-11,070
Subtotal Commodities		1,336	14,750	16,270	15,770	15,770
410	Land	0	0	0	0	0
420	Buildings	0	0	0	0	0
430	Improvements Other Than Bldgs.	0	0	0	0	0
440	Office Equipment	0	0	14,000	0	10,000
450	Vehicular Equipment	14,742	18,500	18,500	21,000	21,000
460	Operating Equipment	0	0	0	0	0
Subtotal Capital Outlay		14,742	18,500	32,500	21,000	31,000
510	Interfund Transfers	0	0	0	0	0
520	Debt Service	0	0	0	0	0
530	Other Nonoperating Expenses	0	0	0	0	0
540	Inventory Accounts	0	0	0	0	0
550	Projects Closing Entries	0	0	0	0	0
Subtotal Other		0	0	0	0	0
TOTAL		461,446	496,640	516,110	511,560	531,590

CITY OF WICHITA 2008/2009 ANNUAL BUDGET

GOAL	3	EFFICIENT INFRASTRUCTURE
PROGRAM	2	ENGINEERING
SERVICE	030202	WATER SYSTEMS PLANNING AND DEVELOPMENT
DEPARTMENT	18	WICHITA WATER UTILITIES
FUND	540	WATER UTILITY FUND

POSITION TITLE	2006	2007	2008	RANGE	2007 ADOPTED	2007 REVISED	2008 ADOPTED	2009 APPROVED
Civil Engineer	1	1	1	C43	72,820	72,820	72,820	72,820
Engineering Technician II	2	2	2	626	104,340	104,340	106,420	108,550
Engineering Technician I	1	1	1	624	47,310	47,310	48,260	49,220
Engineering Aide III	7	7	7	623	315,470	315,470	321,780	328,210
Subtotal	11	11	11		539,940	539,940	549,280	558,800
ADD: Longevity					16,920	16,860	17,520	18,180
Accrual					3,140	0	0	0
Clothing Allowance					700	700	700	700
Overtime					10,000	10,000	10,000	10,000
LESS: Charge to Sewer Utility					(353,960)	(352,570)	(360,870)	(370,900)
Subtotal					(323,200)	(325,010)	(332,650)	(342,020)
TOTAL	11	11	11		216,740	214,930	216,630	216,780

CITY OF WICHITA 2008/2009 ANNUAL BUDGET

GOAL	3 EFFICIENT INFRASTRUCTURE
PROGRAM	5 WATER DISTRIBUTION AND PRODUCTION
SERVICE	030501 WATER DISTRIBUTION
DEPARTMENT	18 WATER AND SEWER DEPARTMENT
FUND	540 WATER UTILITY FUND

		2006 ACTUAL	2007 ADOPTED	2007 REVISED	2008 ADOPTED	2009 APPROVED
110	Regular Salaries	1,892,159	2,972,700	2,929,110	3,063,570	3,166,880
120	Special Salaries	9,264	-531,670	-555,260	-580,080	-606,490
130	Overtime	379,763	170,000	170,000	170,000	170,000
140	Employee Benefits	730,966	973,290	999,860	1,088,570	1,185,680
150	Planned Savings	0	-33,860	0	0	0
	Subtotal Personal Services	3,012,153	3,550,460	3,543,710	3,742,060	3,916,070
210	Utilities	57,827	57,200	57,940	58,940	59,940
220	Communications	13,915	13,740	19,090	19,090	19,090
230	Transportation and Training	44,833	34,970	34,970	30,000	30,000
240	Insurance	23,219	14,080	0	0	0
250	Professional Services	811,913	1,293,610	875,440	885,440	885,440
260	Data Processing	138,224	134,980	134,730	134,730	134,730
270	Equipment Charges	268,884	228,240	258,310	293,910	303,910
280	Buildings and Grounds Charges	51,595	63,080	28,160	56,590	56,590
290	Other Contractuals	-73,260	175,460	1,094,260	1,080,560	1,080,560
	Subtotal Contractuals	1,337,150	2,015,360	2,502,900	2,559,260	2,570,260
310	Office Supplies	21,538	10,800	14,300	15,050	15,050
320	Clothing and Towels	27,338	30,060	30,060	30,060	30,060
330	Chemicals	3,931	2,400	2,400	3,400	3,400
340	Equipment Parts and Supplies	1,262,304	1,334,980	1,385,920	1,392,860	1,392,860
350	Materials	259,238	206,810	250,280	265,280	265,280
370	Building Parts and Materials	27,458	8,160	8,160	25,000	25,000
380	Non-capitalizable Equipment	107,097	108,250	103,140	104,650	104,650
390	Other Commodities	-940,411	200	8,800	8,800	8,800
	Subtotal Commodities	768,494	1,701,660	1,803,060	1,845,100	1,845,100
410	Land	0	0	0	0	0
420	Buildings	0	0	0	0	0
430	Improvements Other Than Bldgs.	0	0	0	0	0
440	Office Equipment	16,753	0	0	0	0
450	Vehicular Equipment	243,653	402,000	395,630	568,000	455,000
460	Operating Equipment	2,561,581	51,000	160,740	280,000	280,000
	Subtotal Capital Outlay	2,821,986	453,000	556,370	848,000	735,000
510	Interfund Transfers	0	0	0	0	0
520	Debt Service	0	0	0	0	0
530	Other Nonoperating Expenses	0	0	0	0	0
540	Inventory Accounts	254,522	1,500,000	2,600,000	2,000,000	2,000,000
550	Projects Closing Entries	0	0	0	0	0
	Subtotal Other	254,522	1,500,000	2,600,000	2,000,000	2,000,000
	TOTAL	8,194,305	9,220,480	11,006,040	10,994,420	11,066,430

CITY OF WICHITA 2008/2009 ANNUAL BUDGET

GOAL	3 EFFICIENT INFRASTRUCTURE
PROGRAM	5 WATER DISTRIBUTION AND PRODUCTION
SERVICE	030501 WATER DISTRIBUTION
DEPARTMENT	18 WICHITA WATER UTILITIES
FUND	540 WATER UTILITY FUND

POSITION TITLE	2006	2007	2008	RANGE	2007 ADOPTED	2007 REVISED	2008 ADOPTED	2009 APPROVED
Division Manager	1	1	1	D63	70,840	73,850	73,850	73,850
General Maintenance Supervisor II	2	2	2	C44	121,760	125,670	125,670	125,670
Division Supervisor	1	1	1	C43	54,330	56,640	56,640	56,640
General Supervisor II	3	3	3	624	137,720	139,610	143,580	146,450
General Supervisor I	6	6	6	623	258,680	251,670	259,630	267,870
Account Clerk III	1	1	1	621	41,000	41,000	41,820	42,660
Maintenance Mechanic	2	2	2	621	77,620	77,630	80,100	82,670
Radio Dispatcher	3	3	3	621	80,320	121,330	124,750	128,290
Senior Storekeeper	1	1	1	621	30,660	30,670	32,060	33,510
Administrative Aide I	1	1	1	620	38,280	35,740	37,360	39,050
Engineering Aide II	1	1	1	620	34,260	39,100	39,880	40,680
Equipment Operator III	8	8	8	620	274,100	273,510	284,890	295,740
Special Water Service Rep.	3	3	3	620	117,300	96,860	100,250	103,760
Customer Service Clerk II	1	1	1	619	72,410	37,370	38,120	38,880
Equipment Operator II *	6	6	7	619	203,990	214,280	255,790	261,750
Water Utility Worker	12	12	12	618	375,510	373,530	384,350	398,040
Equipment Operator I	8	8	8	617	215,300	206,000	215,310	225,040
Laborer	7	7	7	616	173,390	170,550	178,260	186,320
Subtotal	67	67	68		2,377,470	2,365,010	2,472,310	2,546,870
ADD: Longevity					45,920	47,530	49,870	52,210
Shift Differential					4,800	4,800	4,800	4,800
Standby Pay					17,150	17,150	17,150	17,150
Accrual					28,800	0	0	0
Clothing Allowance					5,400	5,400	5,400	5,400
Auto Allowance					2,880	2,880	2,880	2,880
Cell Phone Allowance					1,080	1,080	1,080	1,080
Overtime					100,000	100,000	100,000	100,000
LESS: Charge to Operational Capital Replacements					(541,750)	0	0	0
Charge to Capital Projects					(283,910)	0	0	0
Subtotal					(619,630)	178,840	181,180	183,520
TOTAL	67	67	68		1,757,840	2,543,850	2,653,490	2,730,390

* In 2008 an Equipment Operator II was added as part of a new valve replacement crew.

CITY OF WICHITA 2008/2009 ANNUAL BUDGET

GOAL	3 EFFICIENT INFRASTRUCTURE
PROGRAM	5 WATER DISTRIBUTION AND PRODUCTION
SERVICE	030502 WATER PRODUCTION
DEPARTMENT	18 WATER AND SEWER DEPARTMENT
FUND	540 WATER UTILITY FUND

		2006 ACTUAL	2007 ADOPTED	2007 REVISED	2008 ADOPTED	2009 APPROVED
110	Regular Salaries	1,966,098	2,409,310	2,403,660	2,461,040	2,520,340
120	Special Salaries	7,690	6,760	6,760	6,760	6,760
130	Overtime	149,500	38,000	38,000	38,000	38,000
140	Employee Benefits	590,008	745,240	773,480	823,230	899,670
150	Planned Savings	0	-29,240	0	0	0
Subtotal Personal Services		2,713,295	3,170,070	3,221,900	3,329,030	3,464,770
210	Utilities	3,063,686	3,136,680	3,150,680	3,157,680	3,157,680
220	Communications	23,112	18,840	18,470	18,470	18,470
230	Transportation and Training	7,244	20,360	20,360	20,360	20,360
240	Insurance	5,799	4,440	0	0	0
250	Professional Services	582,266	928,850	853,350	1,322,730	700,280
260	Data Processing	71,617	41,830	66,070	66,070	66,070
270	Equipment Charges	252,551	188,310	208,310	219,080	243,280
280	Buildings and Grounds Charges	53,493	8,290	8,290	8,290	8,290
290	Other Contractuals	22,631	27,460	27,460	27,460	27,460
Subtotal Contractuals		4,082,400	4,375,060	4,352,990	4,840,140	4,241,890
310	Office Supplies	30,092	16,000	16,000	16,000	16,000
320	Clothing and Towels	2,345	350	350	350	350
330	Chemicals	1,458,043	1,493,230	1,745,270	1,822,020	1,899,170
340	Equipment Parts and Supplies	331,343	280,720	280,720	277,520	277,520
350	Materials	20,030	30,870	30,870	35,870	35,870
370	Building Parts and Materials	20,333	35,000	35,000	35,000	35,000
380	Non-capitalizable Equipment	195,559	203,090	203,090	175,990	175,990
390	Other Commodities	2,641	3,000	3,000	3,000	3,000
Subtotal Commodities		2,060,385	2,062,260	2,314,300	2,365,750	2,442,900
410	Land	0	0	0	0	0
420	Buildings	0	0	0	0	0
430	Improvements Other Than Bldgs.	0	0	0	0	0
440	Office Equipment	0	10,500	10,500	35,000	0
450	Vehicular Equipment	116,205	129,170	54,170	265,000	550,000
460	Operating Equipment	308,513	141,130	141,130	53,000	12,500
Subtotal Capital Outlay		424,718	280,800	205,800	353,000	562,500
510	Interfund Transfers	0	0	0	0	0
520	Debt Service	854	0	0	0	0
530	Other Nonoperating Expenses	0	6,000	6,000	6,000	6,000
540	Inventory Accounts	0	0	0	0	0
550	Projects Closing Entries	0	0	0	0	0
Subtotal Other		854	6,000	6,000	6,000	6,000
TOTAL		9,281,653	9,894,190	10,100,990	10,893,920	10,718,060

CITY OF WICHITA 2008/2009 ANNUAL BUDGET

GOAL	3 EFFICIENT INFRASTRUCTURE
PROGRAM	5 WATER DISTRIBUTION AND PRODUCTION
SERVICE	030502 WATER PRODUCTION
DEPARTMENT	18 WICHITA WATER UTILITIES
FUND	540 WATER UTILITY FUND

POSITION TITLE	2006	2007	2008	RANGE	2007 ADOPTED	2007 REVISED	2008 ADOPTED	2009 APPROVED
Division Manager	1	1	1	D63	77,430	98,300	98,300	98,300
Environmental Sciences Administrator	1	1	1	C51	79,080	80,080	80,080	80,080
General Maintenance Supervisor I	4	4	4	C42	240,950	248,440	248,440	248,440
Environmental Scientist	5	5	5	C41	289,160	294,800	294,800	294,800
Electronics Technician III *	1	2	2	627	93,620	107,360	110,840	114,440
Electronics Technician II *	2	3	3	625	123,210	122,930	127,240	131,710
General Supervisor II	1	1	1	624	47,310	47,310	48,260	49,220
Electrician II *	1	2	2	623	73,650	78,330	81,880	85,590
Plant Operator	11	11	11	622	436,810	411,480	425,960	441,010
Account Clerk III	1	1	1	621	41,000	41,000	41,820	42,660
Electrician I	2	2	2	621	70,750	70,750	72,920	75,170
Maintenance Mechanic *	9	12	12	621	382,750	412,360	425,800	439,750
Laboratory Technician	3	3	3	620	102,070	102,100	105,720	109,490
Account Clerk II	1	1	1	619	37,370	37,370	38,120	38,880
Maintenance Specialist	2	1	1	619	63,840	28,140	29,410	30,740
Custodial Worker II	1	1	1	617	34,130	34,130	34,810	35,510
Maintenance Worker *	4	5	5	617	129,750	130,180	136,060	142,220
Custodial Worker I	1	1	1	615	26,710	26,730	27,930	29,190
Subtotal	51	57	57		2,349,590	2,371,790	2,428,390	2,487,200
ADD: Longevity					36,360	36,190	38,050	39,910
Shift Differential					6,300	6,300	6,300	6,300
Standby Pay					22,000	22,000	22,000	22,000
Accrual					24,300	0	0	0
Clothing Allowance					2,200	2,200	2,200	2,200
Auto Allowance					2,880	2,880	2,880	2,880
Cell Phone Allowance					1,680	1,680	1,680	1,680
Overtime					38,000	38,000	38,000	38,000
LESS: Charge to Sewer Utility					(29,240)	(32,620)	(33,700)	(35,070)
Subtotal					104,480	76,630	77,410	77,900
TOTAL	51	57	57		2,454,070	2,448,420	2,505,800	2,565,100

* In the 2007 Adopted Budget an Electronics Technician II, Electronics Technician II, Electrician II, Maintenance Mechanic and a Maintenance Worker were added concurrent with the next phase of Aquifer Storage recovery.

CITY OF WICHITA 2008/2009 ANNUAL BUDGET

GOAL	3 EFFICIENT INFRASTRUCTURE
PROGRAM	5 WATER DISTRIBUTION AND PRODUCTION
SERVICE	030503 CUSTOMER SERVICE
DEPARTMENT	18 WATER AND SEWER DEPARTMENT
FUND	540 WATER UTILITY FUND

		2006 ACTUAL	2007 ADOPTED	2007 REVISED	2008 ADOPTED	2009 APPROVED
110	Regular Salaries	660,219	666,940	658,820	664,820	661,460
120	Special Salaries	564,454	600,580	599,790	618,140	637,090
130	Overtime	91,891	47,000	47,000	47,000	47,000
140	Employee Benefits	616,772	701,360	685,240	726,990	789,300
150	Planned Savings	0	-33,880	0	0	0
Subtotal Personal Services		1,933,336	1,982,000	1,990,850	2,056,950	2,134,850
210	Utilities	0	0	0	0	0
220	Communications	699,443	673,590	707,590	734,590	762,590
230	Transportation and Training	-203	0	0	0	0
240	Insurance	4,777	4,990	0	0	0
250	Professional Services	4,808	0	0	0	0
260	Data Processing	263,195	283,730	283,730	289,960	289,960
270	Equipment Charges	82,329	77,950	87,950	94,450	99,450
280	Buildings and Grounds Charges	0	0	0	0	0
290	Other Contractuals	-450,944	-111,270	-95,270	-263,790	-265,790
Subtotal Contractuals		603,404	928,990	984,000	855,210	886,210
310	Office Supplies	32,497	35,200	35,200	35,200	35,200
320	Clothing and Towels	6,606	9,510	9,510	9,510	9,510
330	Chemicals	0	0	0	0	0
340	Equipment Parts and Supplies	16,039	24,630	24,630	24,630	24,630
350	Materials	41,146	59,180	59,180	62,180	62,180
370	Building Parts and Materials	37	0	0	0	0
380	Non-capitalizable Equipment	119,359	11,870	11,870	4,700	4,700
390	Other Commodities	-50,580	-56,160	-56,160	-54,490	-54,490
Subtotal Commodities		165,103	84,230	84,230	81,730	81,730
410	Land	0	0	0	0	0
420	Buildings	0	0	0	0	0
430	Improvements Other Than Bldgs.	0	0	0	0	0
440	Office Equipment	5,980	0	0	0	0
450	Vehicular Equipment	64,164	77,000	77,000	57,500	58,000
460	Operating Equipment	0	0	0	0	0
Subtotal Capital Outlay		70,144	77,000	77,000	57,500	58,000
510	Interfund Transfers	0	0	0	0	0
520	Debt Service	0	0	0	0	0
530	Other Nonoperating Expenses	0	0	0	0	0
540	Inventory Accounts	0	0	0	0	0
550	Projects Closing Entries	0	0	0	0	0
Subtotal Other		0	0	0	0	0
TOTAL		2,771,987	3,072,220	3,136,080	3,051,390	3,160,790

CITY OF WICHITA 2008/2009 ANNUAL BUDGET

GOAL	3 EFFICIENT INFRASTRUCTURE
PROGRAM	5 WATER DISTRIBUTION AND PRODUCTION
SERVICE	030503 CUSTOMER SERVICE
DEPARTMENT	18 WICHITA WATER UTILITIES
FUND	540 WATER UTILITY FUND

POSITION TITLE	2006	2007	2008	RANGE	2007 ADOPTED	2007 REVISED	2008 ADOPTED	2009 APPROVED
Division Manager	1	1	1	D62	88,320	90,080	90,080	90,080
General Maintenance Supervisor II	1	1	1	C44	43,150	45,120	45,120	45,120
Senior Management Analyst	1	1	1	C44	67,370	69,860	69,860	69,860
Division Supervisor	1	1	1	C43	44,140	45,870	45,870	45,870
Senior Fiscal Analyst	1	1	1	C43	53,550	55,710	55,710	55,710
General Supervisor II	2	2	2	624	94,620	94,620	96,520	98,450
Administrative Aide II	2	2	2	623	89,250	89,260	92,160	94,000
Associate Accountant	1	1	1	623	45,070	45,070	45,970	46,890
Account Clerk III	3	3	3	621	110,760	111,040	115,030	119,180
Maintenance Mechanic	1	1	1	621	41,000	41,000	41,820	42,660
Special Water Service Rep.	8	8	8	620	292,590	302,700	311,440	319,470
Account Clerk II	1	1	1	619	30,790	30,800	32,200	33,660
Customer Service Clerk II	5	5	5	619	180,190	167,820	174,480	180,450
Maintenance Specialist	1	1	1	619	37,370	37,370	38,120	38,880
Water Service Representative	9	9	9	619	336,370	326,870	334,120	341,540
Account Clerk I	1	1	1	617	34,130	34,130	34,810	35,510
Customer Service Clerk I	12	12	12	617	370,560	361,440	373,460	385,940
Subtotal	51	51	51		1,959,230	1,948,760	1,996,770	2,043,270
Water Meter Reader (PT-75%)	21	21	21	619	480,060	450,490	464,300	478,540
Water Service Representative (PT-50%)	2	2	2	619	28,190	27,900	28,930	30,010
Customer Service Clerk I (PT-50%)	6	6	6	617	88,250	117,320	120,830	124,460
Subtotal	29	29	29		596,500	595,710	614,060	633,010
ADD: Longevity					46,570	43,510	45,540	47,570
Shift Differential					1,950	1,950	1,950	1,950
Accrual					14,330	0	0	0
Clothing Allowance					3,000	3,000	3,000	3,000
Cell Phone Allowance					1,080	1,080	1,080	1,080
Overtime					47,000	47,000	47,000	47,000
LESS: Charge to Sewer Utility					(1,355,140)	(1,335,400)	(1,379,440)	(1,431,330)
Subtotal					(1,241,210)	(1,238,860)	(1,280,870)	(1,330,730)
TOTAL	80	80	80		1,314,520	1,305,610	1,329,960	1,345,550

CITY OF WICHITA 2008/2009 ANNUAL BUDGET

GOAL	3 EFFICIENT INFRASTRUCTURE
PROGRAM	11 ADMINISTRATION
SERVICE	031102 WATER ADMINISTRATION
DEPARTMENT	18 WATER AND SEWER DEPARTMENT
FUND	540 WATER UTILITY FUND

		2006 ACTUAL	2007 ADOPTED	2007 REVISED	2008 ADOPTED	2009 APPROVED
110	Regular Salaries	150,321	213,940	189,250	317,560	352,330
120	Special Salaries	23,790	25,520	25,520	25,520	25,520
130	Overtime	0	0	0	0	0
140	Employee Benefits	72,818	68,930	86,650	97,010	102,490
150	Planned Savings	0	0	0	0	0
Subtotal Personal Services		246,929	308,390	301,420	440,090	480,340
210	Utilities	27	0	0	0	0
220	Communications	5,873	5,800	5,870	5,890	5,910
230	Transportation and Training	58,203	71,600	111,220	99,530	104,210
240	Insurance	148,302	149,940	154,090	154,090	154,090
250	Professional Services	137,151	50,290	50,290	50,290	50,290
260	Data Processing	24,345	30,430	30,430	42,340	42,340
270	Equipment Charges	958	1,090	1,090	1,090	1,090
280	Buildings and Grounds Charges	84	0	0	0	0
290	Other Contractuals	1,839,940	1,387,110	1,939,680	2,039,900	2,044,420
Subtotal Contractuals		2,214,882	1,696,260	2,292,670	2,393,130	2,402,350
310	Office Supplies	988	2,750	7,750	7,750	7,750
320	Clothing and Towels	1,620	0	0	0	0
330	Chemicals	2,821	1,300	1,300	1,300	1,300
340	Equipment Parts and Supplies	0	0	0	0	0
350	Materials	0	0	0	0	0
370	Building Parts and Materials	0	0	0	0	0
380	Non-capitalizable Equipment	2,531	0	0	0	0
390	Other Commodities	1,178	-2,630	-2,630	-2,630	-2,630
Subtotal Commodities		9,138	1,420	6,420	6,420	6,420
410	Land	0	0	0	0	0
420	Buildings	0	0	0	0	0
430	Improvements Other Than Bldgs.	0	0	0	0	0
440	Office Equipment	0	0	0	0	0
450	Vehicular Equipment	0	0	0	0	0
460	Operating Equipment	0	0	0	0	0
Subtotal Capital Outlay		0	0	0	0	0
510	Interfund Transfers	2,269,813	2,412,330	2,376,600	2,437,140	2,498,190
520	Debt Service	13,660,376	16,778,650	15,982,550	18,971,980	19,315,240
530	Other Nonoperating Expenses	2,121,214	3,143,730	3,292,450	3,271,540	3,402,170
540	Inventory Accounts	0	0	0	0	0
550	Projects Closing Entries	0	0	0	0	0
Subtotal Other		18,051,403	22,334,710	21,651,600	24,680,660	25,215,600
TOTAL		20,522,351	24,340,780	24,252,110	27,520,300	28,104,710

CITY OF WICHITA 2008/2009 ANNUAL BUDGET

GOAL	3 EFFICIENT INFRASTRUCTURE
PROGRAM	11 ADMINISTRATION
SERVICE	031102 WATER ADMINISTRATION
DEPARTMENT	18 WICHITA WATER UTILITIES
FUND	540 WATER UTILITY FUND

POSITION TITLE	2006	2007	2008	RANGE	2007 ADOPTED	2007 REVISED	2008 ADOPTED	2009 APPROVED
Department Director	1	1	1	E83	133,160	138,540	138,540	138,540
Assistant Department Director	1	1	1	D72	92,630	94,480	94,480	94,480
Communications Specialist *	0	1	1	C41	0	17,170	34,340	34,340
Administrative Aide II	1	1	1	623	41,000	41,000	41,820	42,660
Secretary	1	1	1	619	28,790	30,650	32,030	33,470
Management Intern	1	1	1	601	28,000	28,000	28,000	28,000
Subtotal	5	6	6		323,580	349,840	369,210	371,490
Intern Program (PT - 25%)	8	8	8	601	20,000	20,000	20,000	20,000
Subtotal	13	14	14		343,580	369,840	389,210	391,490
ADD: Longevity					2,900	2,410	2,560	2,700
Accrual					3,170	35,780	75,010	39,320
Auto Allowance					4,800	4,800	4,800	4,800
Cell Phone Allowance					720	720	720	720
Personal Services for Expensed Projects					5,000	15,000	15,000	15,000
Employee Compensation (Water)					83,480	0	87,460	179,700
Employee Compensation (Sewer)					50,270	0	53,060	109,010
LESS: Charge to Sewer Utility					(254,460)	(213,780)	(284,740)	(364,890)
Subtotal					(104,120)	(155,070)	(46,130)	(13,640)
TOTAL	13	14	14		239,460	214,770	343,080	377,850

* A Communications Specialist is added in 2007 to increase public awareness.

CITY OF WICHITA 2008/2009 ANNUAL BUDGET

MULTI-YEAR FUND OVERVIEW - SEWER UTILITY

FUND: 530

	2006 ACTUAL	2007 ADOPTED	2007 REVISED	2008 ADOPTED	2009 APPROVED
Budgeted revenues:					
Charges for services and sales	31,480,309	33,187,290	33,543,470	35,913,560	37,800,880
Interest earnings	519,808	850,000	1,050,000	1,200,000	1,200,000
Total budgeted revenues	32,000,117	34,037,290	34,593,470	37,113,560	39,000,880
Budgeted expenditures:					
Personal services	9,244,347	9,919,950	9,899,300	10,650,180	11,190,140
Contractual services	4,742,194	4,528,810	4,859,550	4,865,660	5,174,520
Administrative charge	234,470	234,470	250,570	250,570	250,570
Materials and supplies	2,634,231	2,488,470	2,586,240	2,641,420	2,654,470
Payments in lieu of franchise fees	1,518,100	1,512,810	1,574,020	1,676,380	1,810,280
Principal - debt service	5,357,549	6,494,990	6,204,990	8,034,980	8,422,780
Interest - debt service	6,163,544	6,566,070	6,796,540	8,004,340	7,760,880
Expensed capital projects	55,520	145,000	145,000	145,000	145,000
Capital outlay	890,214	920,900	1,197,990	1,916,510	1,390,960
Transfers:					
Public safety service fee (GF)	1,222,550	1,395,360	1,398,800	1,468,740	1,542,180
Tort liability (Self-insurance)	92,600	92,600	92,600	92,600	92,600
Delinquent specials (Debt Service)	200,450	200,450	200,450	200,450	200,450
SCADA (IT/IS)	34,814	34,820	34,820	34,820	34,820
Engineering overhead charges	810	1,500	1,500	1,500	1,500
Contingency	0	250,000	250,000	250,000	250,000
Bad debt expense	123,450	250,000	250,000	250,000	250,000
Bond amortization expense	(235,172)	(38,230)	(269,380)	(269,380)	(269,380)
Unamortized deferred refunding	14,340	34,710	116,150	116,150	116,150
Total budgeted expenditures	32,294,011	35,032,680	35,589,140	40,329,920	41,017,920
Budgeted income/(loss)	(293,894)	(995,390)	(995,670)	(3,216,360)	(2,017,040)
Adjustments for GAAP:					
Depreciation	(8,108,087)	(8,219,860)	(8,219,860)	(8,466,460)	(8,720,450)
Debt service principal	5,357,549	6,494,990	6,204,990	8,034,980	8,422,780
Capital outlay	890,214	920,900	1,197,990	1,916,510	1,390,960
Change in accruals	0	0	0	0	0
Total adjustments	(1,860,324)	(803,970)	(816,880)	1,485,030	1,093,290
Increase(decrease) in net assets	(2,154,218)	(1,799,360)	(1,812,550)	(1,731,330)	(923,750)
Net assets January 1	215,150,656	212,423,156	212,996,438	211,183,888	208,653,916
Net assets December 31	212,996,438	210,623,796	211,183,888	209,452,558	207,730,166

CITY OF WICHITA 2008/2009 PROPOSED BUDGET

FUND 530 - SEWER UTILITY
DEPARTMENT 18 - WICHITA WATER UTILITIES

COMBINED DETAIL SUMMARY

		2006 ACTUAL	2007 ADOPTED	2007 REVISED	2008 PROPOSED	2009 PROJECTED
110	Regular Salaries	7,170,740	7,856,470	7,828,820	8,423,490	8,760,230
120	Special Salaries	52,686	50,080	49,910	50,900	51,910
130	Overtime	294,627	131,000	131,000	131,000	131,000
140	Employee Benefits	1,726,420	1,964,940	1,889,570	2,044,790	2,247,000
150	Planned Savings	0	-82,540	0	0	0
Subtotal Personal Services		9,244,472	9,919,950	9,899,300	10,650,180	11,190,140
210	Utilities	2,095,371	2,122,900	2,307,260	2,375,250	2,660,500
220	Communications	44,770	44,080	49,410	49,410	49,410
230	Transportation and Training	26,017	25,950	21,350	21,350	21,350
240	Insurance	124,248	123,730	107,110	107,110	107,110
250	Professional Services	778,593	685,450	791,010	698,310	700,470
260	Data Processing	209,522	190,510	199,170	234,100	234,100
270	Equipment Charges	436,046	405,700	467,550	508,690	529,140
280	Buildings and Grounds Charges	76,246	72,820	72,820	72,820	72,820
290	Other Contractuals	1,364,696	1,427,140	1,429,440	1,384,190	1,385,190
Subtotal Contractuals		5,155,509	5,098,280	5,445,120	5,451,230	5,760,090
310	Office Supplies	22,205	74,090	74,230	74,230	74,230
320	Clothing and Towels	32,947	24,610	28,690	29,690	29,690
330	Chemicals	986,319	1,020,350	1,110,870	1,172,120	1,185,170
340	Equipment Parts and Supplies	975,322	707,460	707,460	756,880	756,880
350	Materials	136,565	127,550	127,550	127,550	127,550
370	Building Parts and Materials	36,831	21,970	25,000	25,000	25,000
380	Non-capitalizable Equipment	351,402	469,740	469,740	415,820	415,820
390	Other Commodities	92,641	102,700	102,700	100,130	100,130
Subtotal Commodities		2,634,231	2,548,470	2,646,240	2,701,420	2,714,470
410	Land	0	0	0	0	0
420	Buildings	52,538	97,060	176,060	132,560	132,560
430	Improvements Other Than Bldgs.	0	0	0	0	0
440	Office Equipment	29,209	20,000	76,090	54,500	12,000
450	Vehicular Equipment	360,168	106,000	247,000	236,000	332,900
460	Operating Equipment	448,299	697,840	698,840	1,493,450	913,500
Subtotal Capital Outlay		890,214	920,900	1,197,990	1,916,510	1,390,960
510	Interfund Transfers	1,550,414	1,723,230	1,726,670	1,796,610	1,870,050
520	Debt Service	11,300,261	13,057,540	12,848,300	15,886,090	16,030,430
530	Other Nonoperating Expenses	1,518,910	1,764,310	1,825,520	1,927,880	2,061,780
540	Inventory Accounts	0	0	0	0	0
550	Projects Closing Entries	0	0	0	0	0
Subtotal Other		14,369,585	16,545,080	16,400,490	19,610,580	19,962,260
TOTAL		32,294,011	35,032,680	35,589,140	40,329,920	41,017,920

CITY OF WICHITA 2008/2009 ANNUAL BUDGET

GOAL	3 EFFICIENT INFRASTRUCTURE
PROGRAM	6 SEWER TREATMENT
SERVICE	030601 SEWER MAINTENANCE
DEPARTMENT	18 WATER AND SEWER DEPARTMENT
FUND	530 SEWER UTILITY FUND

		2006 ACTUAL	2007 ADOPTED	2007 REVISED	2008 ADOPTED	2009 APPROVED
110	Regular Salaries	2,763,412	3,011,480	2,874,470	3,060,400	3,150,270
120	Special Salaries	9,381	8,880	8,880	8,880	8,880
130	Overtime	69,493	70,000	70,000	70,000	70,000
140	Employee Benefits	923,657	1,020,040	1,029,070	1,138,950	1,251,710
150	Planned Savings	0	-41,410	0	0	0
	Subtotal Personal Services	3,765,944	4,068,990	3,982,420	4,278,230	4,480,860
210	Utilities	38,350	35,040	35,700	35,700	35,700
220	Communications	7,018	8,690	9,770	9,770	9,770
230	Transportation and Training	5,936	18,200	13,600	13,600	13,600
240	Insurance	10,351	6,080	0	0	0
250	Professional Services	112,977	45,320	150,320	41,720	41,720
260	Data Processing	72,267	65,860	74,520	76,290	76,290
270	Equipment Charges	235,157	245,140	275,140	300,660	310,660
280	Buildings and Grounds Charges	74,380	45,500	45,500	45,500	45,500
290	Other Contractuals	26,763	9,990	9,990	9,990	9,990
	Subtotal Contractuals	583,198	479,820	614,540	533,230	543,230
310	Office Supplies	15,428	7,130	7,130	7,130	7,130
320	Clothing and Towels	26,539	17,640	22,420	22,420	22,420
330	Chemicals	56,323	121,080	121,080	121,080	121,080
340	Equipment Parts and Supplies	56,703	51,540	51,540	84,460	84,460
350	Materials	89,005	108,940	108,940	108,940	108,940
370	Building Parts and Materials	382	0	0	0	0
380	Non-capitalizable Equipment	93,760	92,160	92,160	62,680	62,680
390	Other Commodities	3,541	4,340	4,340	4,340	4,340
	Subtotal Commodities	341,680	402,830	407,610	411,050	411,050
410	Land	0	0	0	0	0
420	Buildings	0	0	0	0	0
430	Improvements Other Than Bldgs.	0	0	0	0	0
440	Office Equipment	29,209	0	26,090	4,500	12,000
450	Vehicular Equipment	325,425	22,000	163,000	140,000	323,900
460	Operating Equipment	114,192	419,340	369,340	521,450	118,500
	Subtotal Capital Outlay	468,826	441,340	558,430	665,950	454,400
510	Interfund Transfers	0	0	0	0	0
520	Debt Service	0	0	0	0	0
530	Other Nonoperating Expenses	0	0	0	0	0
540	Inventory Accounts	0	0	0	0	0
550	Projects Closing Entries	0	0	0	0	0
	Subtotal Other	0	0	0	0	0
	TOTAL	5,159,647	5,392,980	5,563,000	5,888,460	5,889,540

CITY OF WICHITA 2008/2009 ANNUAL BUDGET

GOAL	3 EFFICIENT INFRASTRUCTURE
PROGRAM	6 SEWAGE TREATMENT
SERVICE	030601 SEWER MAINTENANCE
DEPARTMENT	18 WICHITA WATER UTILITIES
FUND	530 SEWER UTILITY FUND

POSITION TITLE	2006	2007	2008	RANGE	2007 ADOPTED	2007 REVISED	2008 ADOPTED	2009 APPROVED
Division Manager	1	1	1	D63	90,790	94,650	94,650	94,650
General Maintenance Supervisor II	1	1	1	C44	64,470	67,200	67,200	67,200
General Supervisor II	5	5	5	624	237,400	236,560	241,290	246,110
Administrative Aide II	1	1	1	623	44,140	44,150	46,150	47,070
Sewer Line Technician *	6	11	11	622	257,670	458,220	474,960	488,250
Account Clerk III	1	1	1	621	41,000	41,000	41,820	42,660
Maintenance Mechanic	1	1	1	621	41,000	41,000	41,820	42,660
Equipment Operator III *	19	19	20	620	689,870	693,260	751,290	772,290
Equipment Operator II **	10	6	6	619	360,110	205,500	212,540	219,860
Equipment Operator I	30	29	30	617	855,030	804,200	865,210	899,940
Laborer *	9	9	10	616	216,670	212,460	246,740	257,890
Subtotal	84	84	87		2,898,150	2,898,200	3,083,670	3,178,580
ADD: Longevity					55,860	51,290	54,050	56,810
Shift Differential					5,500	5,500	5,500	5,500
Standby Pay					20,400	20,400	20,400	20,400
Accrual					31,570	0	0	0
Clothing Allowance					4,200	4,200	4,200	4,200
Auto Allowance					2,880	2,880	2,880	2,880
Cell Phone Allowance					1,800	1,800	1,800	1,800
Overtime					70,000	70,000	70,000	70,000
Subtotal					192,210	156,070	158,830	161,590
TOTAL	84	84	87		3,090,360	3,054,270	3,242,500	3,340,170

* In 2007 4 Equipment Operator II and 1 Equipment Operator I were reclassified to Sewer Line Technicians.

** In 2008 a Laborer, Equipment Operator I and Equipment Operator III were added to adjust manholes.

CITY OF WICHITA 2008/2009 ANNUAL BUDGET

GOAL	3 EFFICIENT INFRASTRUCTURE
PROGRAM	6 SEWER TREATMENT
SERVICE	030602 SEWAGE TREATMENT
DEPARTMENT	18 WATER AND SEWER DEPARTMENT
FUND	530 SEWER UTILITY FUND

		2006 ACTUAL	2007 ADOPTED	2007 REVISED	2008 ADOPTED	2009 APPROVED
110	Regular Salaries	2,724,542	3,075,070	2,981,580	3,169,630	3,255,700
120	Special Salaries	43,305	41,200	41,030	42,020	43,030
130	Overtime	225,133	61,000	61,000	61,000	61,000
140	Employee Benefits	802,763	944,900	860,500	905,840	995,290
150	Planned Savings	0	-41,130	0	0	0
	Subtotal Personal Services	3,795,743	4,081,040	3,944,110	4,178,490	4,355,020
210	Utilities	2,057,021	2,087,860	2,271,560	2,339,550	2,624,800
220	Communications	37,736	35,390	39,640	39,640	39,640
230	Transportation and Training	20,081	7,750	7,750	7,750	7,750
240	Insurance	4,177	6,190	0	0	0
250	Professional Services	648,335	628,030	628,590	644,490	646,650
260	Data Processing	137,255	124,650	124,650	157,810	157,810
270	Equipment Charges	200,889	160,560	192,410	208,030	218,480
280	Buildings and Grounds Charges	1,866	27,320	27,320	27,320	27,320
290	Other Contractuals	149,163	179,300	181,600	212,600	213,600
	Subtotal Contractuals	3,256,523	3,257,050	3,473,520	3,637,190	3,936,050
310	Office Supplies	6,777	66,960	67,100	67,100	67,100
320	Clothing and Towels	6,408	6,970	6,270	7,270	7,270
330	Chemicals	929,995	899,270	989,790	1,051,040	1,064,090
340	Equipment Parts and Supplies	918,619	655,920	655,920	672,420	672,420
350	Materials	47,560	18,610	18,610	18,610	18,610
370	Building Parts and Materials	36,449	21,970	25,000	25,000	25,000
380	Non-capitalizable Equipment	257,642	377,580	377,580	353,140	353,140
390	Other Commodities	21,320	24,810	24,810	24,810	24,810
	Subtotal Commodities	2,224,771	2,072,090	2,165,080	2,219,390	2,232,440
410	Land	0	0	0	0	0
420	Buildings	52,538	97,060	176,060	132,560	132,560
430	Improvements Other Than Bldgs.	0	0	0	0	0
440	Office Equipment	0	20,000	50,000	50,000	0
450	Vehicular Equipment	34,743	84,000	84,000	96,000	9,000
460	Operating Equipment	334,107	278,500	329,500	972,000	795,000
	Subtotal Capital Outlay	421,388	479,560	639,560	1,250,560	936,560
510	Interfund Transfers	0	0	0	0	0
520	Debt Service	1,736	0	0	0	0
530	Other Nonoperating Expenses	810	1,500	1,500	1,500	1,500
540	Inventory Accounts	0	0	0	0	0
550	Projects Closing Entries	0	0	0	0	0
	Subtotal Other	2,546	1,500	1,500	1,500	1,500
	TOTAL	9,700,971	9,891,240	10,223,770	11,287,130	11,461,570

CITY OF WICHITA 2008/2009 ANNUAL BUDGET

GOAL	3 EFFICIENT INFRASTRUCTURE
PROGRAM	6 SEWAGE TREATMENT
SERVICE	030602 SEWAGE TREATMENT
DEPARTMENT	18 WICHITA WATER UTILITIES
FUND	530 SEWER UTILITY FUND

POSITION TITLE	2006	2007	2008	RANGE	2007 ADOPTED	2007 REVISED	2008 ADOPTED	2009 APPROVED
Division Manager	1	1	1	D63	63,480	69,600	69,600	69,600
Environmental Sciences Administrator	1	1	1	C51	79,620	80,080	80,080	80,080
General Maintenance Supervisor I	4	4	4	C42	220,010	216,200	216,200	216,200
Environmental Services Specialist	1	1	1	C41	60,750	59,710	59,710	59,710
Environmental Scientist **	6	5	6	C41	334,900	330,430	377,220	377,220
Electrical Technician	2	2	2	627	104,490	93,620	96,460	99,400
Electronics Technician III **	1	1	2	627	42,180	42,190	82,900	86,630
General Supervisor II	2	2	2	624	80,000	80,040	83,650	87,420
Administrative Aide II	1	1	1	623	45,070	45,070	45,970	46,890
Electrician II	1	1	1	623	45,070	45,070	45,970	46,890
Plant Operator *	10	11	12	622	446,500	480,760	523,220	538,420
Account Clerk III	1	1	1	621	30,630	30,640	32,030	33,480
Electrician I	1	1	1	621	41,000	41,000	41,820	42,660
Maintenance Mechanic *	11	11	12	621	412,840	384,320	426,590	441,650
Senior Storekeeper	1	1	1	621	36,480	36,040	37,660	39,360
Administrative Aide I	1	1	1	620	36,420	36,420	38,080	39,810
Equipment Operator III	2	2	2	620	78,200	69,370	71,510	73,740
Laboratory Technician	2	2	2	620	69,300	66,490	69,480	71,590
Equipment Operator II *	9	8	7	619	352,670	240,440	218,560	227,090
Clerk III	1	1	1	617	28,350	28,230	29,510	30,850
Custodial Worker II	2	2	2	617	51,260	51,270	53,590	56,020
Maintenance Worker***	6	5	5	617	177,670	144,990	149,820	154,840
Laborer	5	5	5	616	119,690	126,620	131,520	136,630
Custodial Worker I	1	1	1	615	22,760	22,760	23,800	24,880
Subtotal	73	71	74		2,979,340	2,821,360	3,004,950	3,081,060
Laboratory Technician (PT-50%)	2	2	2	620	33,000	32,830	33,820	34,830
Subtotal	2	2	2		33,000	32,830	33,820	34,830
ADD: Longevity					41,820	38,560	40,720	42,880
Shift Differential					8,500	8,500	8,500	8,500
Standby Pay					12,240	12,240	12,240	12,240
Accrual					33,170	0	0	0
Clothing Allowance					2,500	2,500	2,500	2,500
Auto Allowance					3,900	3,900	3,900	3,900
Cell Phone Allowance					1,800	1,800	1,800	1,800
Overtime					28,000	28,000	28,000	28,000
Holiday pay					33,000	33,000	33,000	33,000
Subtotal					164,930	128,500	130,660	132,820
TOTAL	75	73	76		3,177,270	2,982,690	3,169,430	3,248,710

* In 2008 an Equipment Operator II was reclassified to a Plant Operator and one was deleted.

** In 2008 an Environmental Scientist and a Electronics Technician III were added for the Mid Continent Sewage Treatment Facility. 1 Environmental Scientist was shifted to Environmental Services.

*** In the 2007 Revised Budget, one Maintenance Worker I was eliminated.

CITY OF WICHITA 2008/2009 ANNUAL BUDGET

GOAL	3 EFFICIENT INFRASTRUCTURE
PROGRAM	11 ADMINISTRATION
SERVICE	031104 SEWER ADMINISTRATION
DEPARTMENT	18 WATER AND SEWER DEPARTMENT
FUND	530 SEWER UTILITY

		2006 ACTUAL	2007 ADOPTED	2007 REVISED	2008 ADOPTED	2009 APPROVED
110	Regular Salaries	1,682,785	1,769,920	1,972,770	2,193,460	2,354,260
120	Special Salaries	0	0	0	0	0
130	Overtime	0	0	0	0	0
140	Employee Benefits	0	0	0	0	0
150	Planned Savings	0	0	0	0	0
Subtotal Personal Services		1,682,785	1,769,920	1,972,770	2,193,460	2,354,260
210	Utilities	0	0	0	0	0
220	Communications	16	0	0	0	0
230	Transportation and Training	0	0	0	0	0
240	Insurance	109,720	111,460	107,110	107,110	107,110
250	Professional Services	17,282	12,100	12,100	12,100	12,100
260	Data Processing	0	0	0	0	0
270	Equipment Charges	0	0	0	0	0
280	Buildings and Grounds Charges	0	0	0	0	0
290	Other Contractuals	1,188,770	1,237,850	1,237,850	1,161,600	1,161,600
Subtotal Contractuals		1,315,789	1,361,410	1,357,060	1,280,810	1,280,810
310	Office Supplies	0	0	0	0	0
320	Clothing and Towels	0	0	0	0	0
330	Chemicals	0	0	0	0	0
340	Equipment Parts and Supplies	0	0	0	0	0
350	Materials	0	0	0	0	0
370	Building Parts and Materials	0	0	0	0	0
380	Non-capitalizable Equipment	0	0	0	0	0
390	Other Commodities	67,780	73,550	73,550	70,980	70,980
Subtotal Commodities		67,780	73,550	73,550	70,980	70,980
410	Land	0	0	0	0	0
420	Buildings	0	0	0	0	0
430	Improvements Other Than Bldgs.	0	0	0	0	0
440	Office Equipment	0	0	0	0	0
450	Vehicular Equipment	0	0	0	0	0
460	Operating Equipment	0	0	0	0	0
Subtotal Capital Outlay		0	0	0	0	0
510	Interfund Transfers	1,550,414	1,723,230	1,726,670	1,796,610	1,870,050
520	Debt Service	11,298,525	13,057,540	12,848,300	15,886,090	16,030,430
530	Other Nonoperating Expenses	1,518,100	1,762,810	1,824,020	1,926,380	2,060,280
540	Inventory Accounts	0	0	0	0	0
550	Projects Closing Entries	0	0	0	0	0
Subtotal Other		14,367,039	16,543,580	16,398,990	19,609,080	19,960,760
TOTAL		17,433,393	19,748,460	19,802,370	23,154,330	23,666,810

CITY OF WICHITA 2008/2009 ANNUAL BUDGET

GOAL	6 INTERNAL PERSPECTIVE
PROGRAM	5 MISCELLANEOUS
SERVICE	060605 NON DEPARTMENTAL
DEPARTMENT	2 CITY MANAGER'S OFFICE
FUND	100 GENERAL FUND

	2006 ACTUAL	2007 ADOPTED	2007 REVISED	2008 ADOPTED	2009 APPROVED
Memberships	166,489	212,700	212,700	212,700	212,700
Employee Training / Development	142,596	150,000	150,000	150,000	150,000
Tuition Reimbursement	26,383	35,000	35,000	35,000	35,000
Reforestation	100,000	100,000	100,000	100,000	100,000
Cable TV broadcasting	18,859	75,000	75,000	75,000	75,000
Community relations / information	55,315	110,000	110,000	110,000	110,000
Election expenses	0	50,000	50,000	0	16,000
Research & Development	48,122	75,000	75,000	75,000	75,000
Employee recognition	8,639	25,000	25,000	25,000	25,000
Total Nondepartmental	566,403	832,700	832,700	782,700	798,700