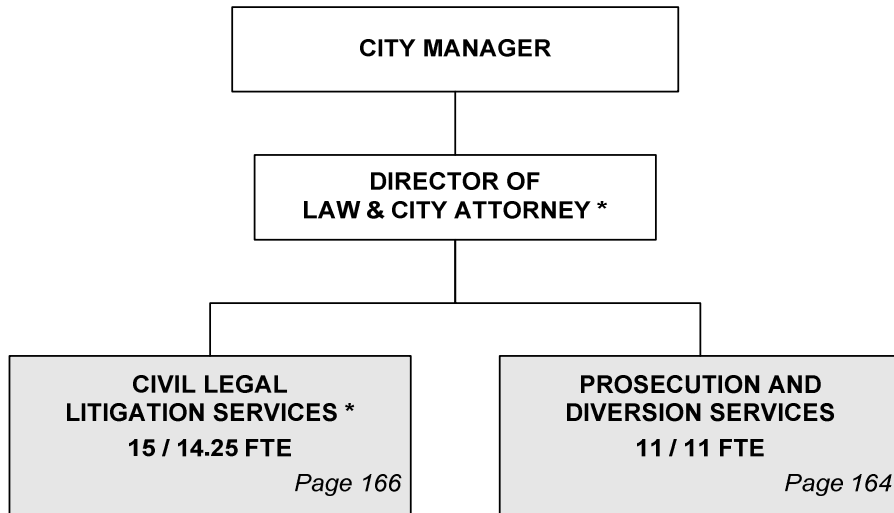

CITY OF WICHITA 2010/2011 ANNUAL BUDGET

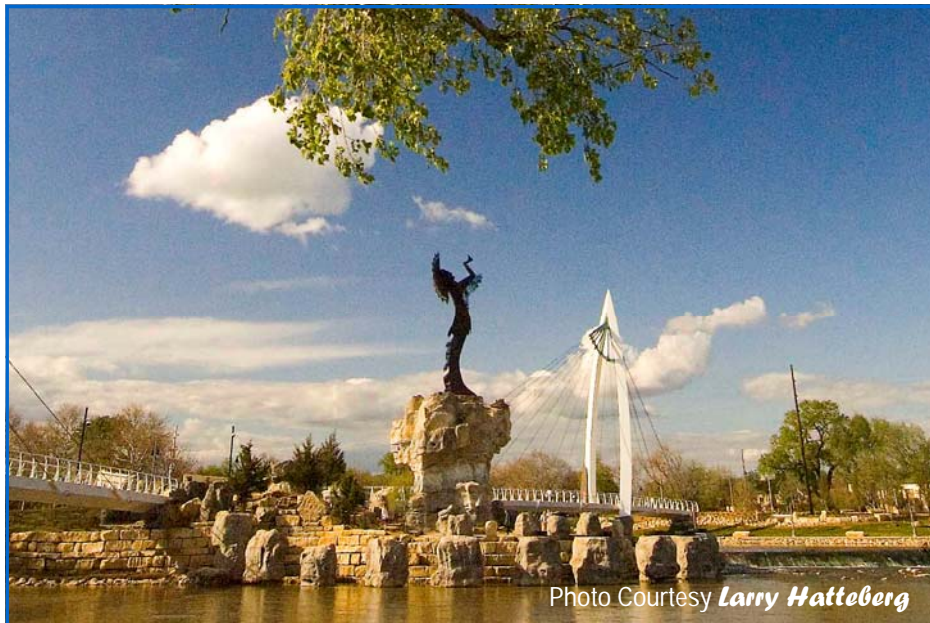
Departmental Organization Chart

LAW



** Position included with Civil Legal Litigation Services*

Total Positions/ Full-Time Equivalent = **26 / 25.25 FTE**



The Keeper of the Plains sculpture raises his face toward the sky and lifts his arms in supplication to the Great Spirit.

THE KEEPER OF THE PLAINS...

A symbol of Wichita and Sedgwick County, this majestic 44-foot sculpture was designed by Blackbear Bosin (1921-1980), a Kiowa-Comanche and internationally recognized artist, muralist and designer. On May 18, 1974 a ceremony took place to dedicate the Keeper, which was designated as a Wichita Bicentennial project. The project was rededicated to the community on the 33rd anniversary of that Bicentennial project date. The 5-ton sculpture was placed at the confluence of the little and big Arkansas Rivers, which is considered a sacred site by Native Americans and was home to the Wichita tribe for many years.

A 2006 project to elevate the sculpture on a 30-foot rock promontory so it could be seen from farther away was completed and officially dedicated by Mayor Carl Brewer and the City Council on May 18, 2007.

CITY OF WICHITA 2010/2011 ANNUAL BUDGET

FUND 100 GENERAL
DEPARTMENT 04 LAW DEPARTMENT

COMBINED DETAIL SUMMARY

		2008 ACTUAL	2009 ADOPTED	2009 REVISED	2010 ADOPTED	2011 APPROVED
110	Regular Salaries	1,673,758	1,736,815	1,744,635	1,715,704	1,778,860
120	Special Salaries	6,249	3,969	3,969	3,969	3,969
130	Overtime	11	0	0	0	0
140	Employee Benefits	343,686	402,532	398,508	454,096	493,338
150	Shrinkage	0	-42,767	-27,912	-28,259	-29,434
Subtotal Salaries and Benefits		2,023,703	2,100,549	2,119,200	2,145,510	2,246,733
210	Utilities	0	0	0	0	0
220	Communications	21,834	24,385	23,063	23,063	23,063
230	Transportation and Training	21,876	35,050	23,310	18,050	35,050
240	Insurance	0	0	0	0	0
250	Professional Services	112,668	74,950	82,815	82,815	82,815
260	Data Processing	70,560	71,403	72,276	72,276	72,276
270	Equipment Charges	309	1,000	600	600	600
280	Buildings and Grounds Charges	0	0	0	0	0
290	Other Contractuals	95,293	64,320	64,740	63,754	63,754
Subtotal Contractuals		322,539	271,108	266,804	260,558	277,558
310	Office Supplies	5,373	6,920	6,520	6,520	6,520
320	Clothing and Towels	0	0	0	0	0
330	Chemicals	0	0	0	0	0
340	Equipment Parts and Supplies	74	0	0	0	0
350	Materials	0	0	0	0	0
370	Building Parts and Materials	0	0	0	0	0
380	Non-capitalizable Equipment	0	0	0	0	0
390	Other Commodities	233	0	0	0	0
Subtotal Commodities		5,681	6,920	6,520	6,520	6,520
410	Land	0	0	0	0	0
420	Buildings	0	0	0	0	0
430	Improvements Other Than Bldgs.	0	0	0	0	0
440	Office Equipment	0	0	0	0	0
450	Vehicular Equipment	0	0	0	0	0
460	Operating Equipment	0	0	0	0	0
Subtotal Capital Outlay		0	0	0	0	0
510	Interfund Transfers	0	0	0	0	0
520	Debt Service	0	0	0	0	0
530	Other Nonoperating Expenses	0	0	0	0	0
540	Inventory Accounts	0	0	0	0	0
550	Projects Closing Entries	0	0	0	0	0
Subtotal Other		0	0	0	0	0
TOTAL		2,351,923	2,378,577	2,392,524	2,412,588	2,530,810

CITY OF WICHITA 2010/2011 ANNUAL BUDGET

DEPARTMENT	04 LAW
FUND	100 GENERAL FUND
SERVICE	010603 PROSECUTION AND DIVERSION SERVICES

		2008 ACTUAL	2009 ADOPTED	2009 REVISED	2010 ADOPTED	2011 APPROVED
110	Regular Salaries	612,310	636,530	638,364	608,151	670,779
120	Special Salaries	101	0	0	0	0
130	Overtime	0	0	0	0	0
140	Employee Benefits	129,045	147,737	165,578	181,067	211,680
150	Shrinkage	0	-25,876	-10,451	-10,260	-11,316
Subtotal Salaries and Benefits		741,456	758,391	793,491	778,958	871,142
210	Utilities	0	0	0	0	0
220	Communications	5,457	11,060	5,816	5,816	5,816
230	Transportation and Training	13,717	25,800	18,060	8,800	25,800
240	Insurance	0	0	0	0	0
250	Professional Services	35,859	74,390	35,000	35,000	35,000
260	Data Processing	30,822	30,791	29,568	29,568	29,568
270	Equipment Charges	0	0	0	0	0
280	Buildings and Grounds Charges	0	0	0	0	0
290	Other Contractuals	15,274	27,470	17,340	16,840	16,840
Subtotal Contractuals		101,129	169,511	105,784	96,024	113,024
310	Office Supplies	2,402	2,520	2,520	2,520	2,520
320	Clothing and Towels	0	0	0	0	0
330	Chemicals	0	0	0	0	0
340	Equipment Parts and Supplies	0	0	0	0	0
350	Materials	0	0	0	0	0
370	Building Parts and Materials	0	0	0	0	0
380	Non-capitalizable Equipment	0	0	0	0	0
390	Other Commodities	134	0	0	0	0
Subtotal Commodities		2,535	2,520	2,520	2,520	2,520
410	Land	0	0	0	0	0
420	Buildings	0	0	0	0	0
430	Improvements Other Than Bldgs.	0	0	0	0	0
440	Office Equipment	0	0	0	0	0
450	Vehicular Equipment	0	0	0	0	0
460	Operating Equipment	0	0	0	0	0
Subtotal Capital Outlay		0	0	0	0	0
510	Interfund Transfers	0	0	0	0	0
520	Debt Service	0	0	0	0	0
530	Other Nonoperating Expenses	0	0	0	0	0
540	Inventory Accounts	0	0	0	0	0
550	Projects Closing Entries	0	0	0	0	0
Subtotal Other		0	0	0	0	0
TOTAL		845,121	930,422	901,795	877,502	986,686

CITY OF WICHITA 2010/2011 ANNUAL BUDGET

DEPARTMENT	04 LAW
FUND	100 GENERAL FUND
SERVICE	010603 PROSECUTION AND DIVERSION SERVICES

POSITION TITLE	2008	2009	2010	RANGE	2009 ADOPTED	2009 REVISED	2010 ADOPTED	2011 APPROVED
Chief Prosecutor	1	1	1	D61	93,784	97,535	97,535	97,535
Assistant City Attorney II	2	2	2	C44	136,922	142,399	142,399	142,399
Assistant City Attorney I	5	5	5	C43	282,354	302,975	302,975	302,975
Program Specialist	1	1	1	C41	60,005	62,405	62,405	62,405
Secretary	2	2	2	619	60,850	60,878	61,637	61,637
Subtotal	11	11	11		633,914	666,192	666,951	666,951
Savings from scheduled position hold*					0	(31,200)	(62,400)	0
Other Regular Salaries					2,616	3,372	3,600	3,828
Total Regular Salaries					636,530	638,364	608,151	670,779
TOTAL AUTHORIZED POSITIONS	11	11	11					

* One Assistant City Attorney I position is being held open in 2009 and 2010.

CITY OF WICHITA 2010/2011 ANNUAL BUDGET

DEPARTMENT	04 LAW
FUND	100 GENERAL FUND
SERVICE	060304 CIVIL LEGAL LITIGATION SERVICES

		2008 ACTUAL	2009 ADOPTED	2009 REVISED	2010 ADOPTED	2011 APPROVED
110	Regular Salaries	1,061,448	1,100,285	1,106,271	1,107,553	1,108,081
120	Special Salaries	6,148	3,969	3,969	3,969	3,969
130	Overtime	11	0	0	0	0
140	Employee Benefits	214,640	254,795	232,930	273,029	281,658
150	Shrinkage	0	-16,891	-17,461	-17,999	-18,118
Subtotal Salaries and Benefits		1,282,247	1,342,158	1,325,709	1,366,552	1,375,590
210	Utilities	0	0	0	0	0
220	Communications	16,377	13,325	17,247	17,247	17,247
230	Transportation and Training	8,158	9,250	5,250	9,250	9,250
240	Insurance	0	0	0	0	0
250	Professional Services	76,808	560	47,815	47,815	47,815
260	Data Processing	39,738	40,612	42,708	42,708	42,708
270	Equipment Charges	309	1,000	600	600	600
280	Buildings and Grounds Charges	0	0	0	0	0
290	Other Contractuals	80,020	36,850	47,400	46,914	46,914
Subtotal Contractuals		221,410	101,597	161,020	164,534	164,534
310	Office Supplies	2,971	4,400	4,000	4,000	4,000
320	Clothing and Towels	0	0	0	0	0
330	Chemicals	0	0	0	0	0
340	Equipment Parts and Supplies	74	0	0	0	0
350	Materials	0	0	0	0	0
370	Building Parts and Materials	0	0	0	0	0
380	Non-capitalizable Equipment	0	0	0	0	0
390	Other Commodities	100	0	0	0	0
Subtotal Commodities		3,145	4,400	4,000	4,000	4,000
410	Land	0	0	0	0	0
420	Buildings	0	0	0	0	0
430	Improvements Other Than Bldgs.	0	0	0	0	0
440	Office Equipment	0	0	0	0	0
450	Vehicular Equipment	0	0	0	0	0
460	Operating Equipment	0	0	0	0	0
Subtotal Capital Outlay		0	0	0	0	0
510	Interfund Transfers	0	0	0	0	0
520	Debt Service	0	0	0	0	0
530	Other Nonoperating Expenses	0	0	0	0	0
540	Inventory Accounts	0	0	0	0	0
550	Projects Closing Entries	0	0	0	0	0
Subtotal Other		0	0	0	0	0
TOTAL		1,506,802	1,448,155	1,490,729	1,535,085	1,544,124

CITY OF WICHITA 2010/2011 ANNUAL BUDGET

DEPARTMENT	04 LAW
FUND	100 GENERAL FUND
SERVICE	060304 CIVIL LEGAL LITIGATION SERVICES

POSITION TITLE	2008	2009	2010	RANGE	2009 ADOPTED	2009 REVISED	2010 ADOPTED	2011 APPROVED
Department Director	1	1	1	E83	147,150	153,036	153,036	153,036
Chief Deputy City Attorney	1	1	1	D72	120,563	125,385	125,385	125,385
Deputy City Attorney *	3	3	3	D71	311,336	323,790	323,790	323,790
Assistant City Attorney III	4	4	4	C45	325,705	315,094	315,094	315,094
Legal Assistant ***	0	1	1	623	0	37,150	37,150	37,150
Administrative Aide II ***	1	0	0	623	37,837	0	0	0
Administrative Secretary	1	1	1	621	36,733	31,415	32,169	32,169
Legal Secretary	3	3	3	620	111,157	108,450	108,450	108,450
Subtotal	14	14	14		1,090,481	1,094,319	1,095,074	1,095,074
Other Regular Salaries					9,804	11,952	12,480	13,008
Total Regular Salaries					1,100,285	1,106,271	1,107,553	1,108,081
Other Special Salaries					2,760	2,760	2,760	2,760
Community Service Worker (PT-25%)**	1	1	1	410	1,209	1,209	1,209	1,209
Total Special Salaries					3,969	3,969	3,969	3,969
TOTAL AUTHORIZED POSITIONS	15	15	15					

* One Deputy City Attorney is reimbursed 75% by the Economic Development Fund; One Deputy City Attorney is reimbursed 25% from the Pension Fund.

** The Community Service Worker position is a summer intern with costs reimbursed by the Wichita Bar Association.

*** One Administrative Aide II was reclassified to a Legal Assistant.