

# Item VI-2 De-annexation of Land Near East 55<sup>th</sup> Street South and South Clifton Avenue

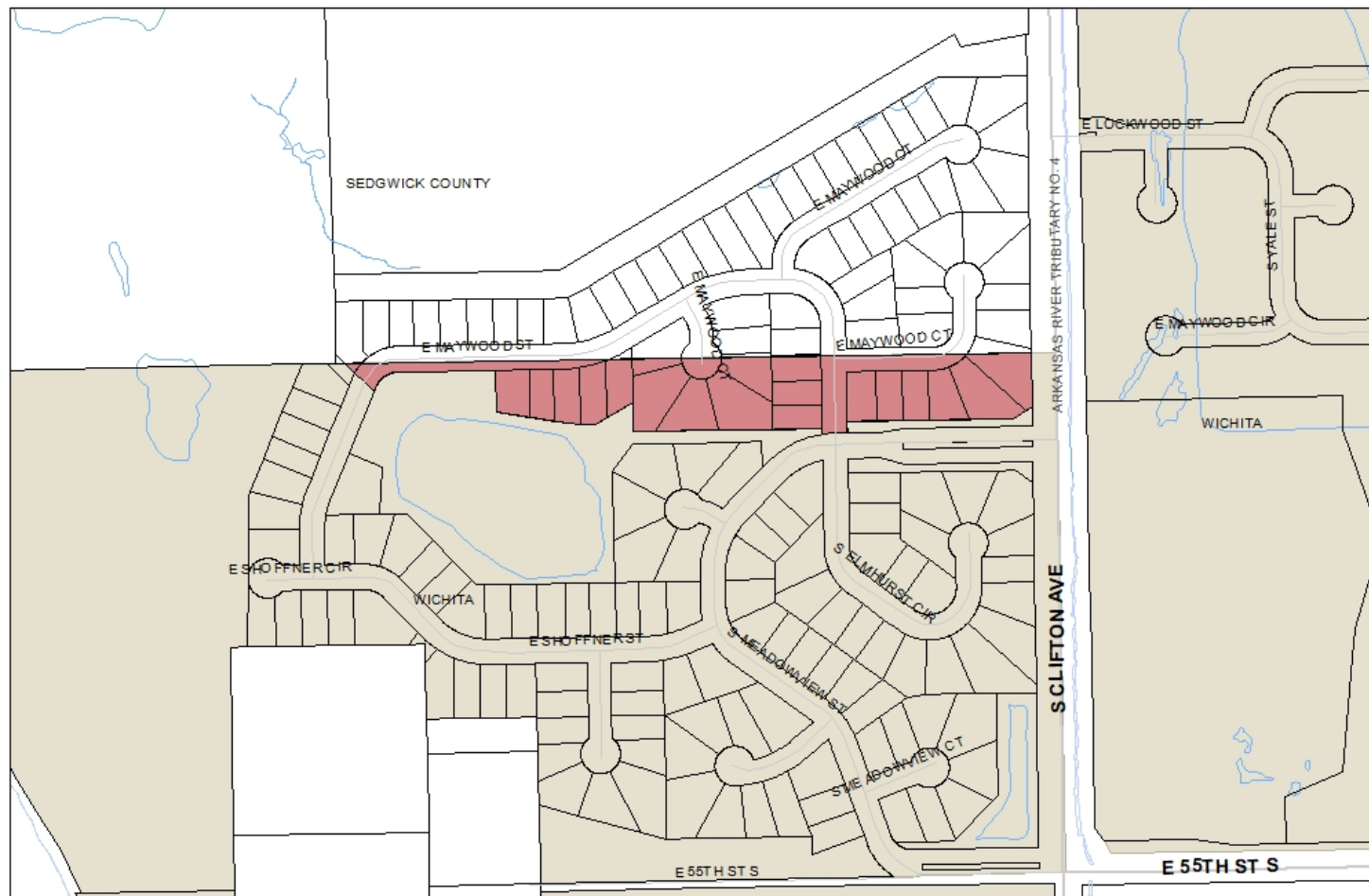


Wichita City Council

June 21, 2022



# Item VI-2



- DE-ANNEXATION AREA
- WICHITA
- UNINCORPORATED SEDGWICK COUNTY



Software: ArcGIS  
 Map Data Sources:  
 City of Wichita  
 Sedgwick County  
 It is understood that while the City of Wichita Data Center Geographical Information Systems Department have no intention and reason to believe that there are inaccuracies in information incorporated in the base map, the Data Center-GIS personnel make no warranty or representation, either expressed or implied, with respect to the information or data displayed.  
 Prepared: 5/27/2022  
 Note: Public property represented on this map is not intended to be inclusive.



# Background



- In November 2006, annexation A06-21 was approved.
- This land is not within the Oaklawn Improvement District and annexation of this land is valid.
- Upon annexation, the 132 acres of land converted to SF-5 Single-Family Residential Zoning.
- De-annexation site is 5.43 acres on the north end of the A06-21 annexation area.



# Background

- • • • • • • • • • • • • •
- In 2007, a plat was approved for development of the subject site in connection with land abutting to the north.
- In 2016, the annexation of the land abutting to the north was nullified by the 18<sup>th</sup> Judicial District Court.
- In 2021, Wichita, Sedgwick County, and Oaklawn Improvement District agreed the subject site would receive sanitary sewer service from Oaklawn.
- Water service will be provided by Wichita based on previous agreement with Oaklawn.



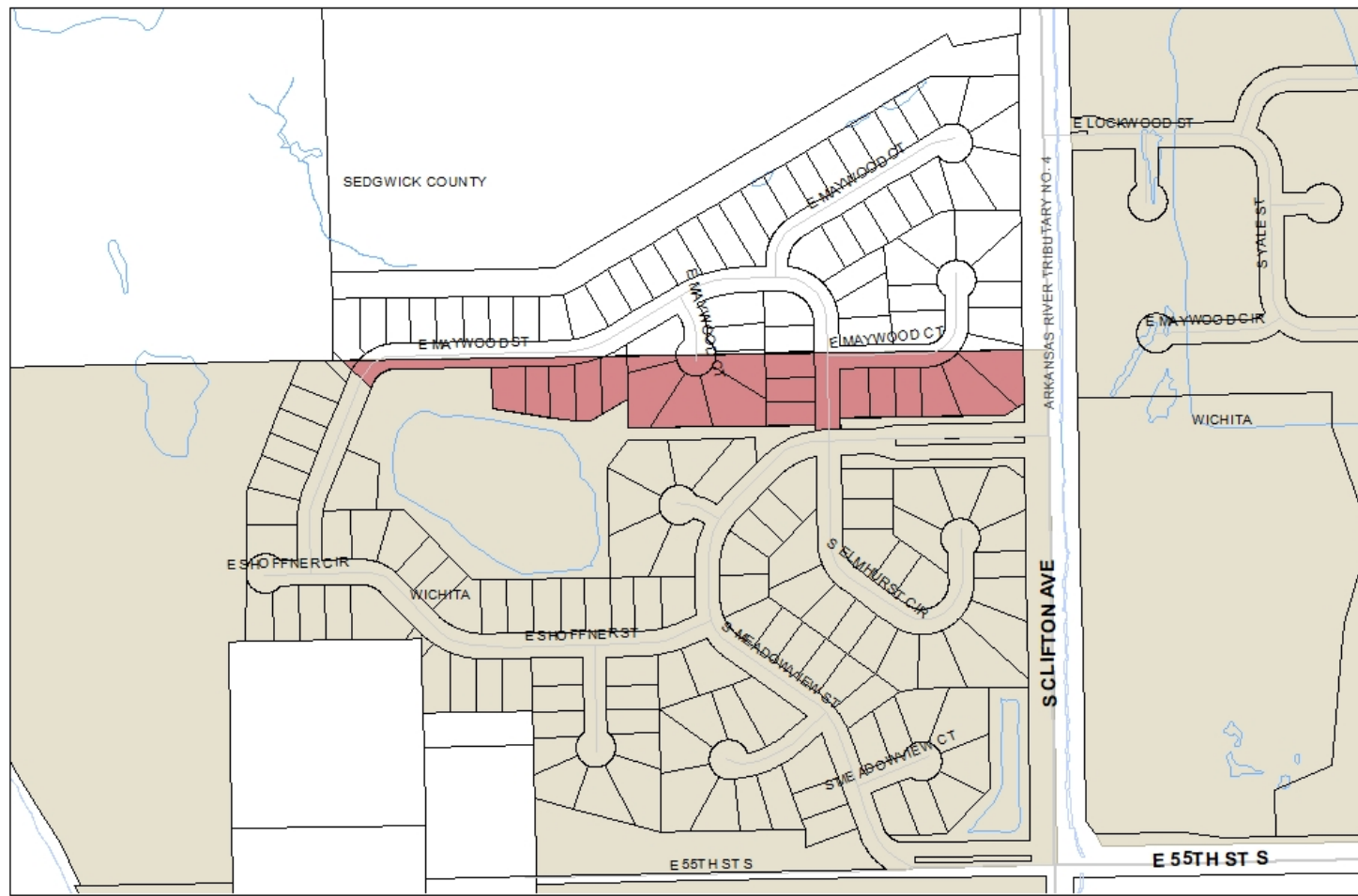
# Background



- Upon de-annexation, Wichita will no longer receive any current or future ad valorem taxes levied and collected against the property.
- Upon de-annexation, Wichita is no longer responsible to provide police protection.
- Fire protection is provided under a joint agreement between Wichita and Sedgwick County.



# Item VI-2



- DE-ANNEXATION AREA
- WICHITA
- UNINCORPORATED SEDGWICK COUNTY



Software: ArcGIS  
 Map Data Sources:  
 City of Wichita  
 Sedgwick County  
 Prepared: 5/27/2022

It is understood that while the City of Wichita Data Center Geographical Information Systems Department have no intention and reason to believe that there are inaccuracies in information incorporated in the base map, the Data Center-GIS personnel make no warranty or representation, either expressed or implied, with respect to the information or data displayed.  
 Note: Public property represented on this map is not intended to be inclusive.



**Item VI-2**  
**De-annexation of**  
**Land Near East 55<sup>th</sup>**  
**Street South and**  
**South Clifton Avenue**

