

WFD Station 17 Pilot Program



Wichita Fire Department

December 7, 2020



Guiding Principles



- *Station 17 Current and Past Alarm Data*
- *Operational Effectiveness and Taxpayer Equity*
- *Public Safety System- County wide*
 - *Core Function*
- *Pending Data Upgrade*



Station 17 Primary Response Area

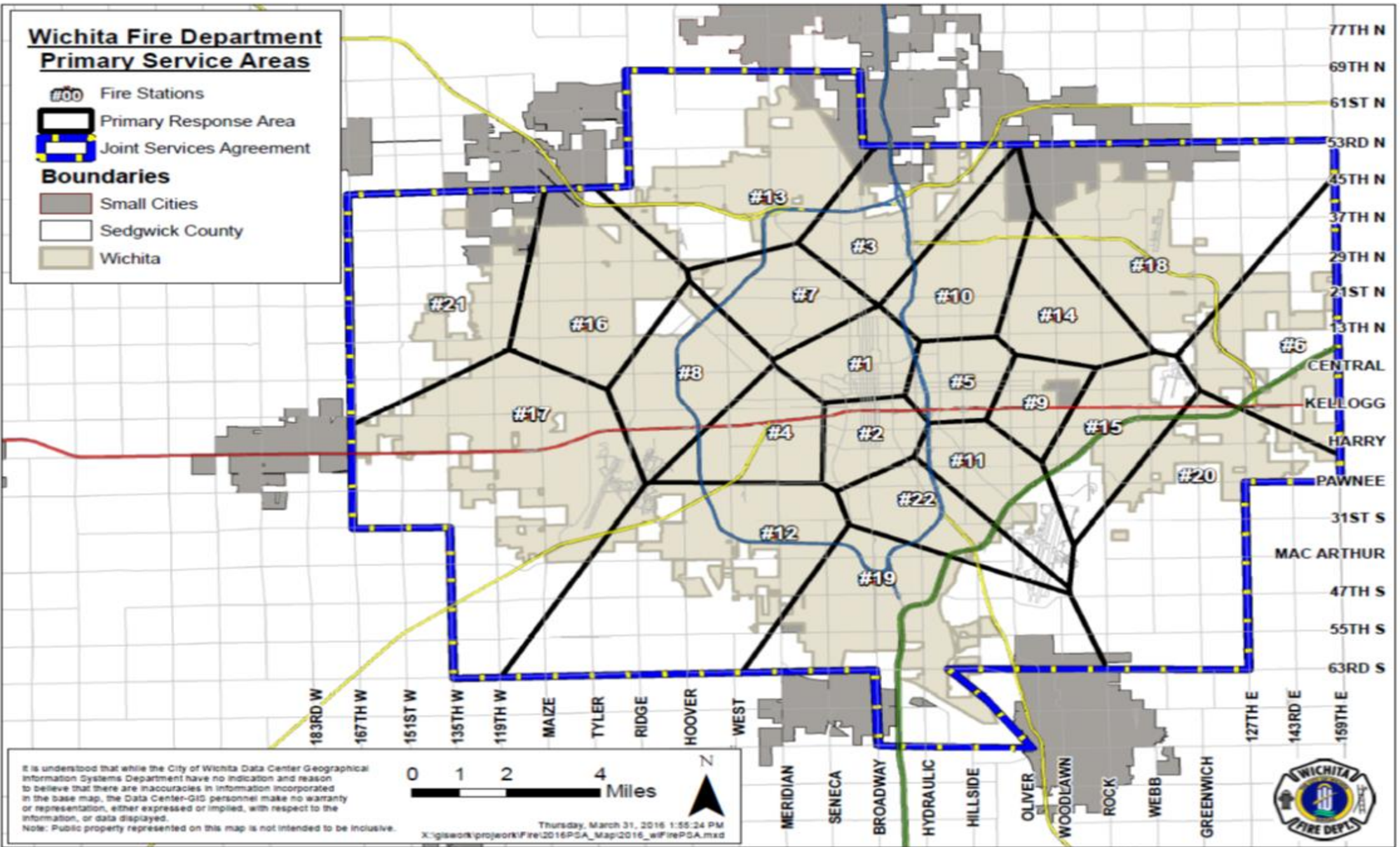


- Station 17 primary response area: 27.87mi²
- Average 5.6 alarms per day (2019)
- Average response time in Station 17's primary response area approximately 6.13 minutes



Wichita Fire Department Primary Service Areas

- Fire Stations
 - Primary Response Area
 - Joint Services Agreement
- Boundaries**
- Small Cities
 - Sedgwick County
 - Wichita



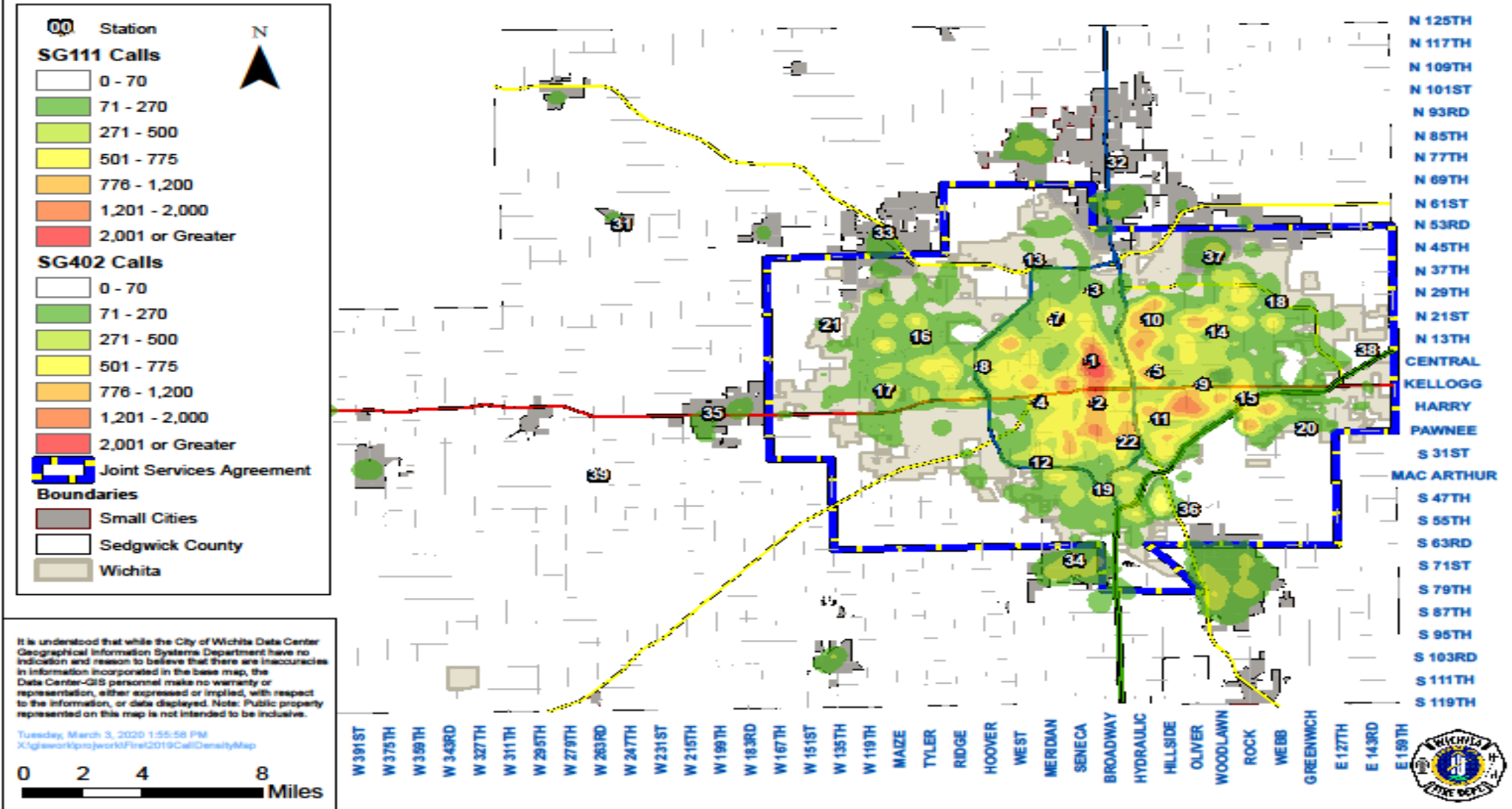
It is understood that while the City of Wichita Data Center Geographical Information Systems Department have no indication and reason to believe that there are inaccuracies in information incorporated in the base map, the Data Center-GIS personnel make no warranty or representation, either expressed or implied, with respect to the information, or data displayed.
 Note: Public property represented on this map is not intended to be inclusive.

0 1 2 4 Miles

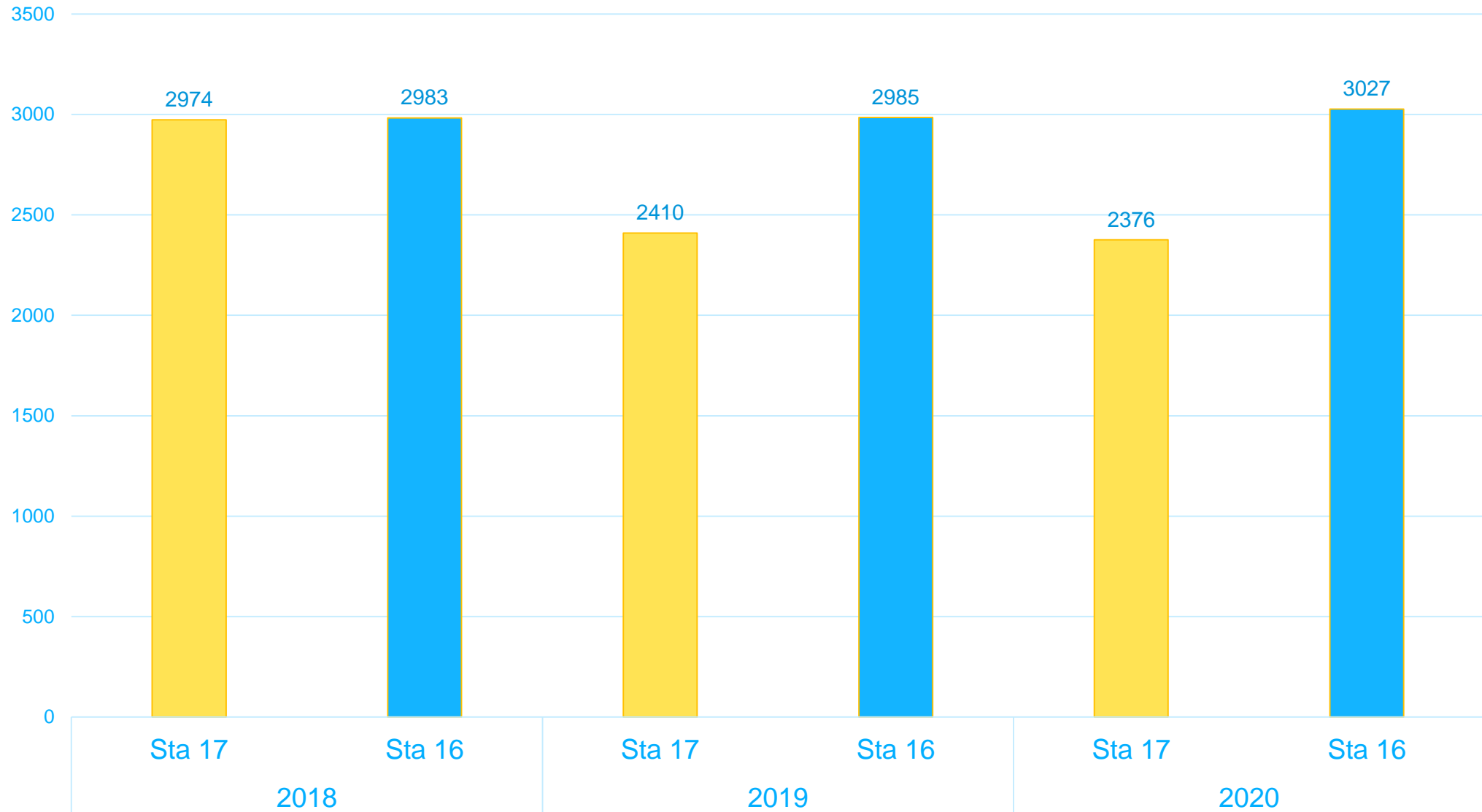
Thursday, March 31, 2016 1:55:24 PM
 X:\giswork\projwork\Fire\2016PCA_Map\2016_wFirePCA.mxd



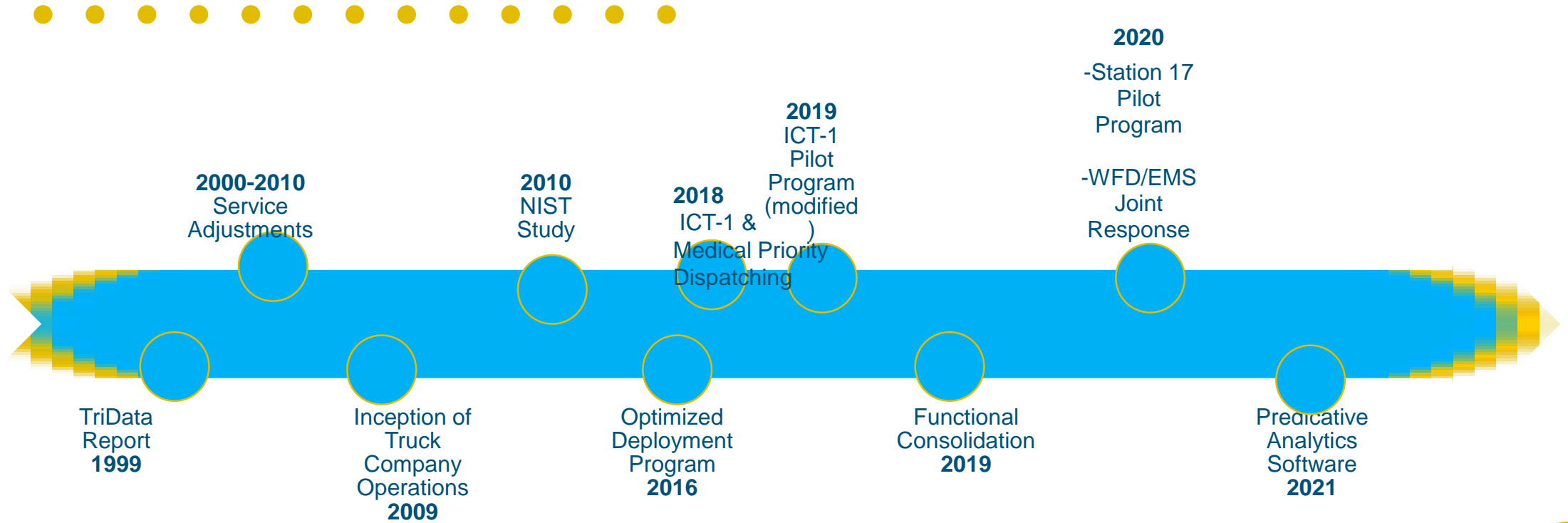
2019 Wichita Fire - Call Density



Station 16 & 17 Comparison (2020 Projected)



Pilot Program Considerations



2000-2010 Service Adjustments



- Addition of 3 new WFD Fire Stations
- Daily staffing increased to 117 personnel/shift
- Dedicated Truck Company staff
- Engine 21 and 22 relocation
- Mobile Computer Terminals
- Truck Company Program



Optimized Deployment Program



- Established call-type prioritization that did not exist in 1999
- Reduction in low-acuity medical alarm response
- Increase in higher priority medical emergencies indicates need for additional first-arriving personnel



Evolution



- Four-person crews completed fireground tasks (on average) nearly 25% faster than 3 person crews
- Five person crews, i.e. 3-person Engine with 2-person Squad, did not decrease overall fireground task times
- Four-person Truck Companies facilitate early search/rescue operations in conjunction with ventilation functions upon arrival
- Adoption of CCR (Pit Group) instead of CPR



Operational Profile



WFD Station 16

WFD Station 17

	Pre-Pilot	Post-Pilot		Pre-Pilot	Post-Pilot
Total Personnel	6	7	Total Personnel	5	4
Truck 4	3	4	Squad 17	2	-
Engine 16	3	3	Engine 17	3	4
			Tender 17	Cross Staffed	Cross Staffed
			Brush 17	Cross Staffed	Cross Staffed

**Daily staffing levels remain unchanged in West Wichita*



Primary Response Partners



- WFD considers several partnering organizations in determining effective deployment of staff and apparatus
- Partnering organizations include Sedgwick County EMS, Sedgwick County Fire, Eisenhower Airport Police/Fire/EMS, Wichita Police Department, etc...



Functional Consolidation



- Cooperation between Wichita Fire Department and Sedgwick County Fire Department
- Citizens of Wichita and Sedgwick County receive overlapping response, resulting in increased services and decreased response times
- WFD and Sedgwick County Fire cross-train regularly to ensure quality and efficient service



Predicative Analytics Software



- Data analytics software program
 - Will provide first comprehensive report of WFD resources and responses since 1999 TriData report
- Predicative analytics software approved for purchase in 2019, and expected to launch in 2021



Future of Station 17 Pilot Program



- Program consistently evaluated
- Pilot program intended to extend throughout data collection and analyzation phases associated with the implemented predicative analytics software
- Adjust services as needed



WFD Station 17 Pilot Program



Wichita Fire Department

