



CITY OF  
**WICHITA**



# Planeview Community Center



Park & Recreation

January 2, 2024



# Background



- The Planeview neighborhood was built in 1942 primarily as temporary housing and is currently home to nearly 4,000 residents
- Colvin Neighborhood Resource Center is an approx 3,000 sq ft facility built in the 1970's and connected to Colvin Elementary School in Planeview
- Colvin NRC houses District 3 Office of Community Services staff, programs, partners, and events as well as Park & Recreation staff
- Colvin NRC serves an average of 600 residents each month, not counting families served by the before/after school and Summer Activity Camp programs run by Park & Rec



# Background



- The current facility includes three offices, a 10-person conference room, and 6 cubicle spaces
- Partner organizations have been turned down for large-scale programming, events, and classes due to lack of space
- Residents of Planeview neighborhood have been requesting youth targeted programming beyond before/after school and summer activity camp programs for many years



# Analysis



- In February 2022 discussions were held about opportunities for moving the District III Neighborhood Resource Center that would allow for expanded programming efforts
- In March 2022 community stakeholders brought the idea of building a new joint Recreation Center and Neighborhood Resource Center in Planeview to City staff
- A committee of City staff analyzed potential sites that would keep the Center in/near Planeview and selected an underutilized portion of Planeview Park adjacent to the current NRC and the school serviced by Park and Recreation programming



# Analysis



- In June 2023 Wichita State University completed an archeological survey and determined the desired site was viable for use
- In September 2023 conceptual design of a facility was undergone with on call architects resulting in an initial design concept for a joint Neighborhood Resource Center and Recreation facility, or Community Center
- Initial design for a single-story structure of approximately 18,500 sq ft incorporating a full gymnasium, computer labs, fitness facilities, classrooms, and offices was received and approved







A SITE PLAN  
SCALE: 1" = 40'-0"



HANNAY & ASSOCIATES ARCHITECTS  
1728 South Hillside, Wichita, Kansas, 67201  
Phone: (316) 631-9900  
Fax: (316) 684-1844

2023  
A NEW BUILDING FOR  
PLANEVIEW RECREATION  
-- Wichita, Kansas --



DRAWINGS ISSUED		
NO.	DATE	ITEM ISSUED
1	1/16	SCHEMATIC REVIEW S.P. REDUCTION
2	1/16	SCHEMATIC REVIEW S.P. REDUCTION
3	10/10	SCHEMATIC REVIEW
4	10/15	SCHEMATIC REVIEW
3	1/20	SCHEMATIC REVIEW
2	1/22	SCHEMATIC REVIEW
1	1/14	SCHEMATIC REVIEW

COMPUTER DRAWING

DATE: 2023  
DRAWN BY: CHECKED BY:

SHEET  
**SITE  
OPT 1**  
OF SHEETS





**HAMMEY & ASSOCIATES ARCHITECTS**  
 1228 South Hillside, Wichita, Kansas 67203  
 Phone (316) 683-8965  
 Fax (316) 684-4441

**2023  
 A NEW BUILDING FOR  
 PLANEVIEW RECREATION**  
 - - - Wichita, Kansas -

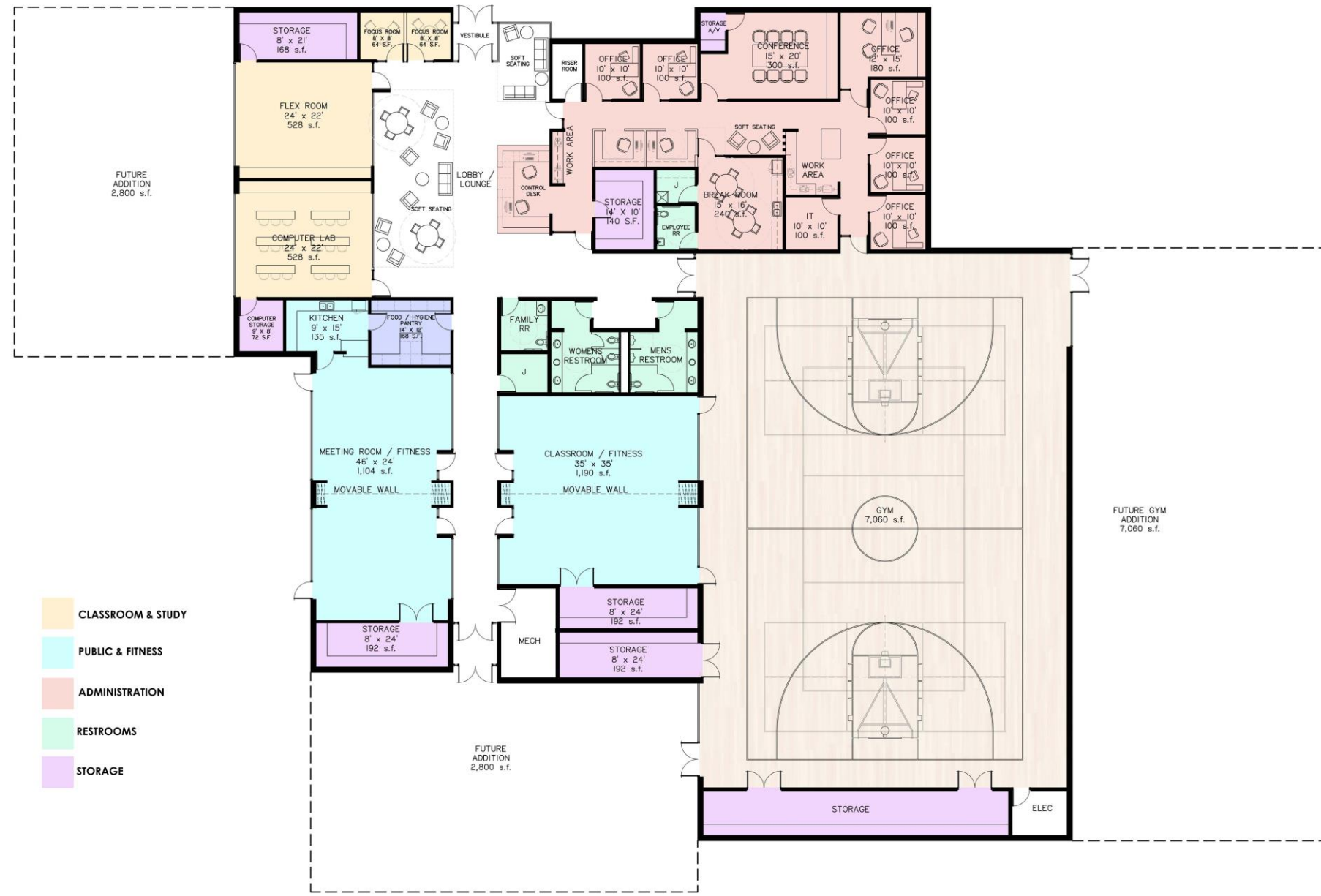


DRAWINGS ISSUED		
NO.	DATE	ITEM ISSUED
6	12/6	SCHEMATIC REVIEW
7	1/16	SCHEMATIC REVIEW S.F. REDUCTION
8	1/16	SCHEMATIC REVIEW S.F. REDUCTION
9	10/16	SCHEMATIC REVIEW
4	10/15	SCHEMATIC REVIEW
3	1/22	SCHEMATIC REVIEW
2	1/22	SCHEMATIC REVIEW
1	1/14	SCHEMATIC REVIEW

COMPUTER DRAWING

DATE: 2023  
 DRAWN BY: \_\_\_\_\_ CHECKED BY: \_\_\_\_\_

SHEET  
**PLAN**  
 OF \_\_\_\_\_ SHEETS



- CLASSROOM & STUDY
- PUBLIC & FITNESS
- ADMINISTRATION
- RESTROOMS
- STORAGE

**18,400 s.f.**  
**FLOOR PLAN**  
 SCALE: 1/8" = 1'-0"







# Financial Considerations



- The estimated project budget is \$10,000,000
  - Site Development - \$1,500,000
  - Building Construction - \$7,140,000
  - Architectural/Engineering - \$610,000
  - Contingency - \$750,000



# Financial Considerations



- Reallocation of the following CIP funds will occur to support the Planeview Community Center project:

• 2024	Watson Park	\$660,000
• 2025	Watson Park	\$325,000
• 2027	Planeview Park	\$250,000
• 2028	Planeview Park	\$1,375,000
• 2030	Clapp Park	\$4,077,299
• 2031	Park Maintenance Facility	\$250,000
• 2033	Park Maintenance Facility	\$3,000,000



# Recommendation



- It is recommended that the City Council approve the project concept and design of the Planeview Community Center, authorize the project budget as presented, adopt the bonding resolution, and authorize the necessary signatures.

