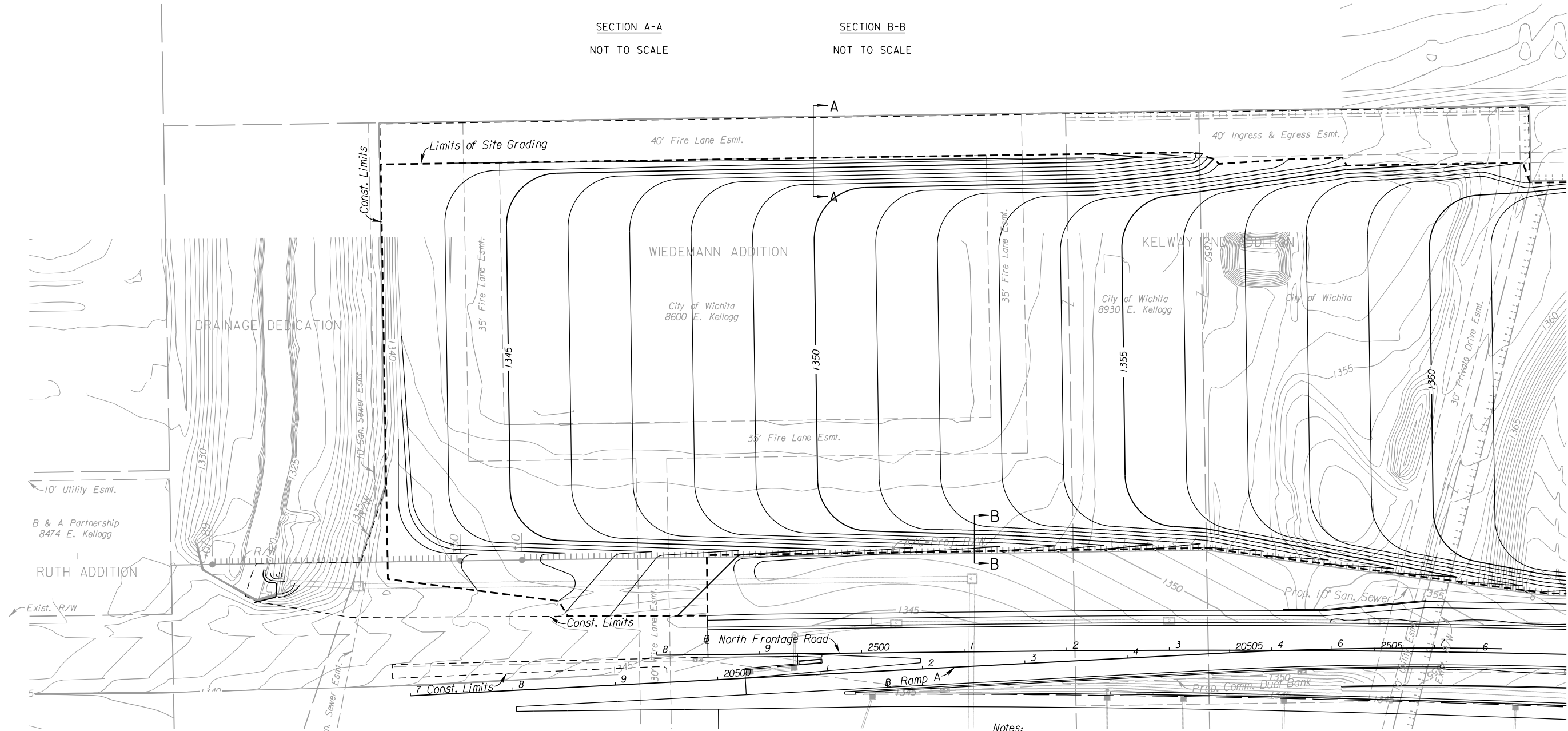
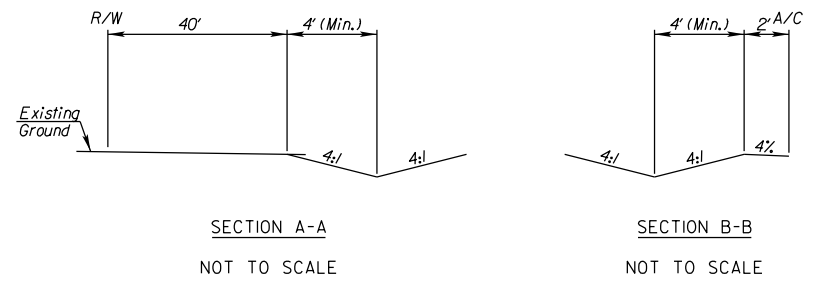


STATE	PROJECT NO.	YEAR	SHEET NO.	TOTAL SHEETS
KANSAS	472-85031	2015	489	1055



Notes:  
Intersection of all slope lines shall be softened and rounded for pleasing appearance.

All earthwork needed for site restoration shall be paid for as "Common Excavation" and "Compaction of Earthwork (Type B)(MR-90)". See Sh. No. 872

Fill material needed shall be hauled from within the project. No off-site material will be accepted.

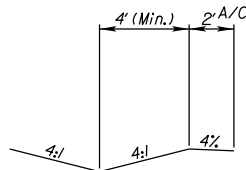
Contractor shall maintain positive drainage within existing drainage basins.

See Sh. No's. 491-502 for Landscape Plans.

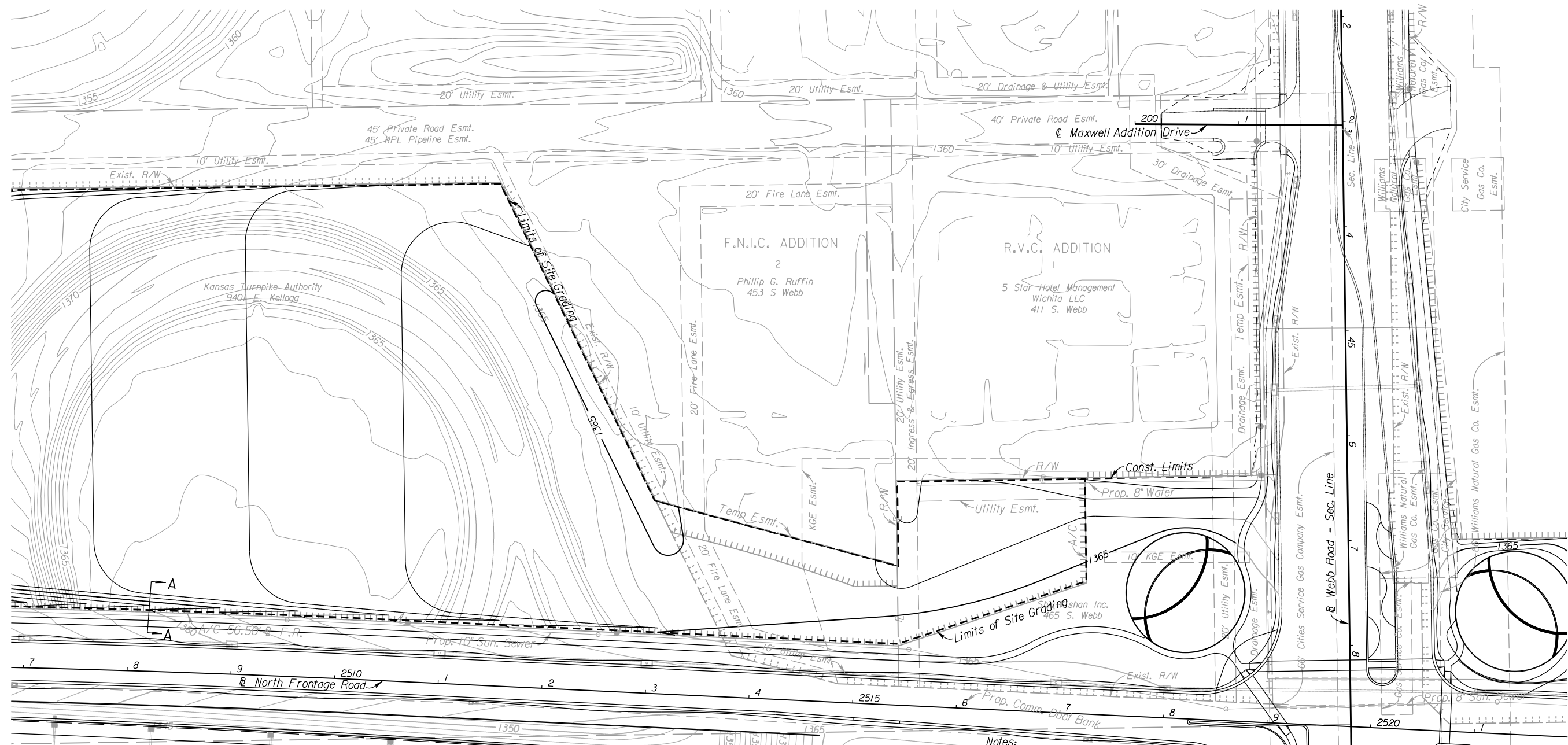
CITY OF WICHITA  
NORTH FRONTAGE ROAD  
ROADSIDE IMPROVEMENTS

3:31:44 PM  
 4/15/2015  
 T:\35765A\Cadd\Sheets\Package\Roadway\Landscape\KFN6RD01A.dgn  
 SURV. PLOT CADD DES. DR. TR. CKD. APP.

STATE	PROJECT NO.	YEAR	SHEET NO.	TOTAL SHEETS
KANSAS	472-85031	2015	490	1055



SECTION A-A  
NOT TO SCALE



Notes:  
Intersection of all slope lines shall be softened and rounded for pleasing appearance.

All earthwork needed for site restoration shall be paid for as "Common Excavation" and "Compaction of Earthwork (Type B)(MR-90)". See Sh. No. 872

Fill material needed shall be hauled from within the project. No off-site material will be accepted.

Contractor shall maintain positive drainage within existing drainage basins.

See Sh. No's. 491-502 for Landscape Plans.

CITY OF WICHITA  
NORTH FRONTAGE ROAD  
ROADSIDE IMPROVEMENTS

3:31:47 PM  
 4/15/2015  
 T:\35765A\Cadd\Sheets\Package\Roadway\Landscape\KFNCRD02A.dgn  
 SURV. PLOT CADD DES. DR. TR. CKD. APP.