



Focus Mission Goal Programs Outcomes	FOCUS AREAS			
	KEEPING WICHITA SAFE	GROWING WICHITA'S ECONOMY	BUILDING DEPENDABLE INFRASTRUCTURE	LIVING WELL
	WICHITA: A WELL-RUN CITY			
	MISSION			
	To provide professional planning services to grow Wichita's economy through implementation of the Community Investments Plan and its tools regarding zoning, land use, community facilities, and infrastructure.			
GOALS				
A. Develop and implement plans and policies regarding land use, community facilities, and infrastructure needs as requested by the City Council and the Board of County Commissioners. B. Provide processes for community participation dealing with land use issues to the satisfaction of the City Council and the Board of County Commissioners. C. Administer land development codes and regulations that encourage compatible land use relationships that promote Wichita-Sedgwick County as a global center of advanced manufacturing and high-tech industry and a premier cultural, service, educational, health and retail center for south central Kansas.				
PROGRAMS		GOAL ALIGNMENT		
1. Planning Services.....		A, B, C		
2. Zoning Enforcement.....		C		

KEY OUTCOME MEASURES	Benchmark	2017 Actual	2018 Actual	2019 Actual	2020 Target	2021 Target
City of Wichita Plat Reviews Conducted	55	52	47	66	55	55
Land Use, Planning, and Zoning: Residents Rating Excellent or Good *	CoW Similar	N/A	41%	N/A	45%	N/A
Governing Bodies' Satisfaction with Implementation Tools and Processes	90%	95%	95%	95%	95%	95%

Note: * This survey of Wichita residents is commissioned in even years.

DEPARTMENT DESCRIPTION: The Metropolitan Area Planning Department is a consolidated City-County department of 17 staff comprised of planners, inspectors, and support staff. An inter-local agreement provides that the Planning program is funded 50 percent by the City of Wichita and 50 percent by Sedgwick County after program fees and charges for services. The Zoning Enforcement program is funded approximately 25 percent from charges for services and about 75 percent by reimbursement from Sedgwick County. Zoning Enforcement was transferred from the Metropolitan Area Building and Construction Department (MABCD) in January 2018. MAPD provides professional planning services to the Wichita City Council and Sedgwick County Board of County Commissioners. The department's activities are reviewed by the Metropolitan Area Planning Commission and its the Subdivision & Utilities and Advance Plans subcommittees, which make recommendations to the governing bodies. Numerous other advisory boards and committees review the department's activities as well. MAPD operates a new customer service center at The Ronald Reagan Building in coordination with the MABCD as a "one stop shop."



EXPENDITURES BY PROGRAM	2021 Adopted	Page Reference
1. Planning Services	\$1,613,486	207
2. Zoning Enforcement	477,229	208
TOTAL EXPENDITURES	\$2,090,715	

REVENUES AND EXPENDITURES POSITIONS / FTE	2019 Actual	2020 Adopted	2020 Revised	2021 Adopted	2022 Approved
City/County Planning	\$1,533,342	\$1,587,228	\$1,587,228	\$1,613,486	\$1,659,423
City/County Zoning	424,663	464,397	464,397	477,229	495,305
REVENUES	\$1,958,005	\$2,051,625	\$2,051,625	\$2,090,715	\$2,154,728
Personal Services	\$1,812,114	\$1,838,252	\$1,865,814	\$1,881,542	\$1,908,606
Contractuals	131,797	162,477	166,215	157,746	161,933
Commodities	7,651	15,986	15,986	15,986	15,986
Capital Outlay	5,749	3,610	3,610	3,610	3,610
Other	694	31,300	0	31,831	64,593
EXPENDITURES	\$1,958,005	\$2,051,625	\$2,051,625	\$2,090,715	\$2,154,728
POSITIONS / FTE	17 / 17.00	17 / 17.00	17 / 17.00	17 / 17.00	17 / 17.00



DEPARTMENT HIGHLIGHTS: The 2018 Adopted Budget included the transition of the Zoning Enforcement program from the Metropolitan Area Building and Construction Department (MABCD) to the Metropolitan Area Planning Department (MAPD). The Zoning Enforcement program is comprised of four inspection staff. In 2019, 100 percent of plans and policies requested by governing bodies were developed. In addition, staff recorded the highest number of plat reviews in 2019 (66) since data collection began in 2009.

PROJECT DOWNTOWN
CREATE A GROWING COMMUNITY
HISTORIC PRESERVATION

VISION

To grow Wichita's economy through timely, transparent planning processes that give the community meaningful input on development applications and through long-range planning of land use, community facilities, and infrastructure to ensure prudent use of public resources and the natural and built environment.

FOCUS	GOAL	ACTIVITIES
Growing Wichita's Economy	A. Develop and implement plans and policies	1. Advanced Plans
	B. Provide processes for community participation	2. Administration
	C. Administer land development codes and regulations	3. Current Plans

PERFORMANCE MEASURES	Benchmark	2017 Actual	2018 Actual	2019 Actual	2020 Target	2021 Target	GOAL Alignment
Percentage of Plans and Policies Requested by Governing Bodies that are Developed	 90%	100%	95%	100%	95%	95%	C
Governing Bodies' Satisfaction with Public Participation	 90%	95%	95%	95%	95%	95%	A

PROGRAM DESCRIPTION: Planning is a consolidated City-County program with nine planners and four support staff. The Planning services program provides professional planning services for the Wichita metropolitan area through three distinctive activities. The planning activities are reviewed by the Metropolitan Area Planning Commission and its Subdivision and Utilities, and Advance Plans subcommittees, which make recommendations to the governing bodies. Numerous other advisory boards and committees review the department's activities as well.

ACTIVITY DESCRIPTIONS: **Administration** is comprised of customer service, budget, financial management, human resources, communication/media relations, case/meeting support, support for governing body and City/County Manager and special projects. **Current Plans** involves zoning, subdivision planning and historic preservation. This includes development/site and plan/architectural reviews, protective overlays, community unit plans, planned unit developments, conditional uses, administrative adjustments, plats, lot splits, dedications, landscape plans, street names, code amendments, vacations, annexation (Wichita), platting waivers, variances, IT/GIS support and meeting support. **Advanced Plans** includes comprehensive plans, downtown/neighborhood plans, and Transit planning. This covers census data, plan monitoring, trend reports, infill strategy, utility/facility plans, plan amendments, annexation (small city) and records/information management.

REVENUES AND EXPENDITURES POSITIONS / FTE	2019 Actual	2020 Adopted	2020 Revised	2021 Adopted	2022 Approved
City/County Planning	\$1,533,342	\$1,587,228	\$1,587,228	\$1,613,46	\$1,659,423
REVENUES	\$1,533,342	\$1,587,228	\$1,587,228	\$1,613,486	\$1,659,423
Personal Services	\$1,418,100	\$1,425,243	\$1,443,640	\$1,456,08	\$1,472,715
Contractuals	103,319	122,499	128,477	117,798	121,985
Commodities	5,479	11,500	11,500	11,500	11,500
Capital Outlay	5,749	3,610	3,610	3,610	3,610
Other	694	24,375	0	24,500	49,611
EXPENDITURES	\$1,533,342	\$1,587,228	\$1,587,228	\$1,613,486	\$1,659,423
POSITIONS / FTE	13 / 13.00	13 / 13.00	13 / 13.00	13 / 13.00	13 / 13.00

VISION

Provide professional zoning enforcement to grow Wichita's economy through implementation of the Community Investments Plan and its tools regarding zoning and land use.

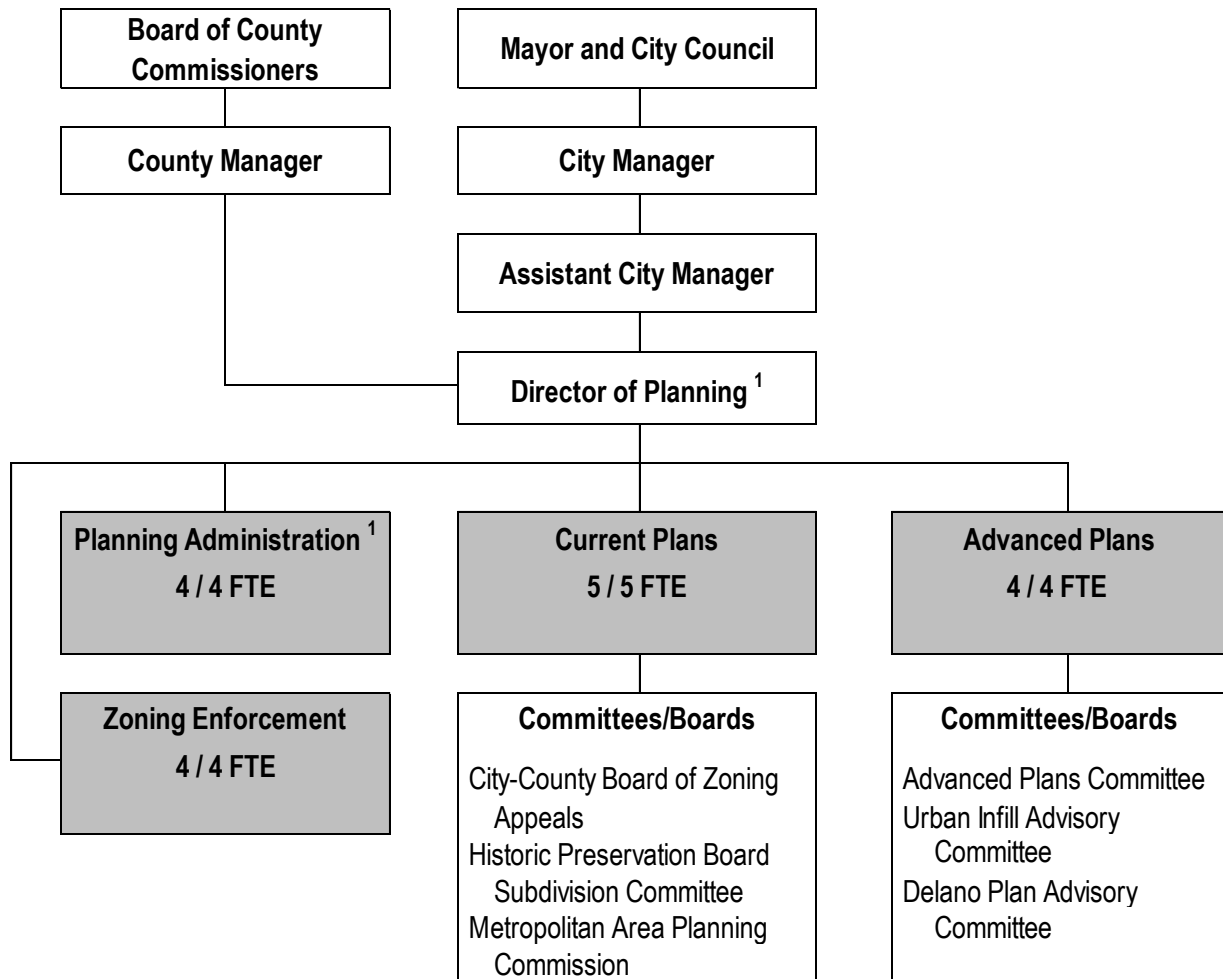
FOCUS	GOAL	ACTIVITIES
Growing Wichita's Economy	C. Administer land development codes and regulations	4. Zoning and Land Use Administration 5. License Zoning Compliance 6. Sign Code Enforcement

PERFORMANCE MEASURES	Benchmark	2017 Actual	2018 Actual	2019 Actual	2020 Target	2021 Target	GOAL Alignment
Average Calendar Days from Zoning Enforcement Case Initiation to Voluntary Compliance	320	511	40	42	45	45	C
Average Calendar Days from Zoning Enforcement Case Initiation to Forced Compliance	300	N/A	316	183	200	200	C

PROGRAM DESCRIPTION: Enforcement of zoning regulations, under the direction of the Zoning Administrator, provides guidance for development by ensuring adequate supply of land for various uses, as well as providing efficient and cost effective access to public services. The regulations offer flexibility with various options for resolving issues that balance property rights and regulations. This program was transferred to the Metropolitan Area Planning Department in the 2018 Adopted Budget to better align with MAPD goals. The Planning Director serves as the Zoning Administrator.

ACTIVITY DESCRIPTIONS: The **Zoning and Land Use Administration** activity assists with property development by implementing the unified zoning code, airport hazard zoning code, and landscape code. In regards to **License Zoning Compliance**, the Zoning Enforcement program reviews zoning regulations including overlay and special districts, as well as zoning-based requirements contained in the various license codes and investigating licensing complaints related to zoning. The Zoning Enforcement program coordinates all **Sign Code Enforcement** in the City of Wichita, including review of sign permits, inspection of installed signs, removing signs from rights of way and public property, and investigating sign complaints.

REVENUES AND EXPENDITURES POSITIONS / FTE	2019 Actual	2020 Adopted	2020 Revised	2021 Adopted	2022 Approved
City/County Zoning	\$424,663	\$464,397	\$464,397	\$477,229	\$495,305
REVENUES	\$424,663	\$464,397	\$464,397	\$477,229	\$495,305
Personal Services	\$394,013	\$413,008	\$422,173	\$425,463	\$435,890
Contractuals	28,478	39,978	37,738	39,948	39,948
Commodities	2,172	4,486	4,486	4,486	4,486
Capital Outlay	0	0	0	0	0
Other	0	6,925	0	7,332	14,982
EXPENDITURES	\$424,663	\$464,397	\$464,397	\$477,229	\$495,305
POSITIONS / FTE	4 / 4.00	4 / 4.00	4 / 4.00	4 / 4.00	4 / 4.00



¹ Position included with Planning Administration

Total Authorized Positions/Full-Time Equivalentents = 17 / 17 FTE



Authorized Positions	Range	2019	2020	2021
Department Director	1E83	1	1	1
Planning Manager	1D62	1	1	1
Principal Planner	1C45	2	2	2
Inspection Supervisor	1C43	1	1	1
Senior Planner	1C43	3	3	3
Associate Planner	1C41	2	2	2
Combination Neighborhood Inspectors	1627	3	3	3
Planning Technician	1623	2	2	2
Administrative Aide I	1620	2	2	2
TOTAL AUTHORIZED POSITIONS		17	17	17
City-County Planning Fund		17	17	17