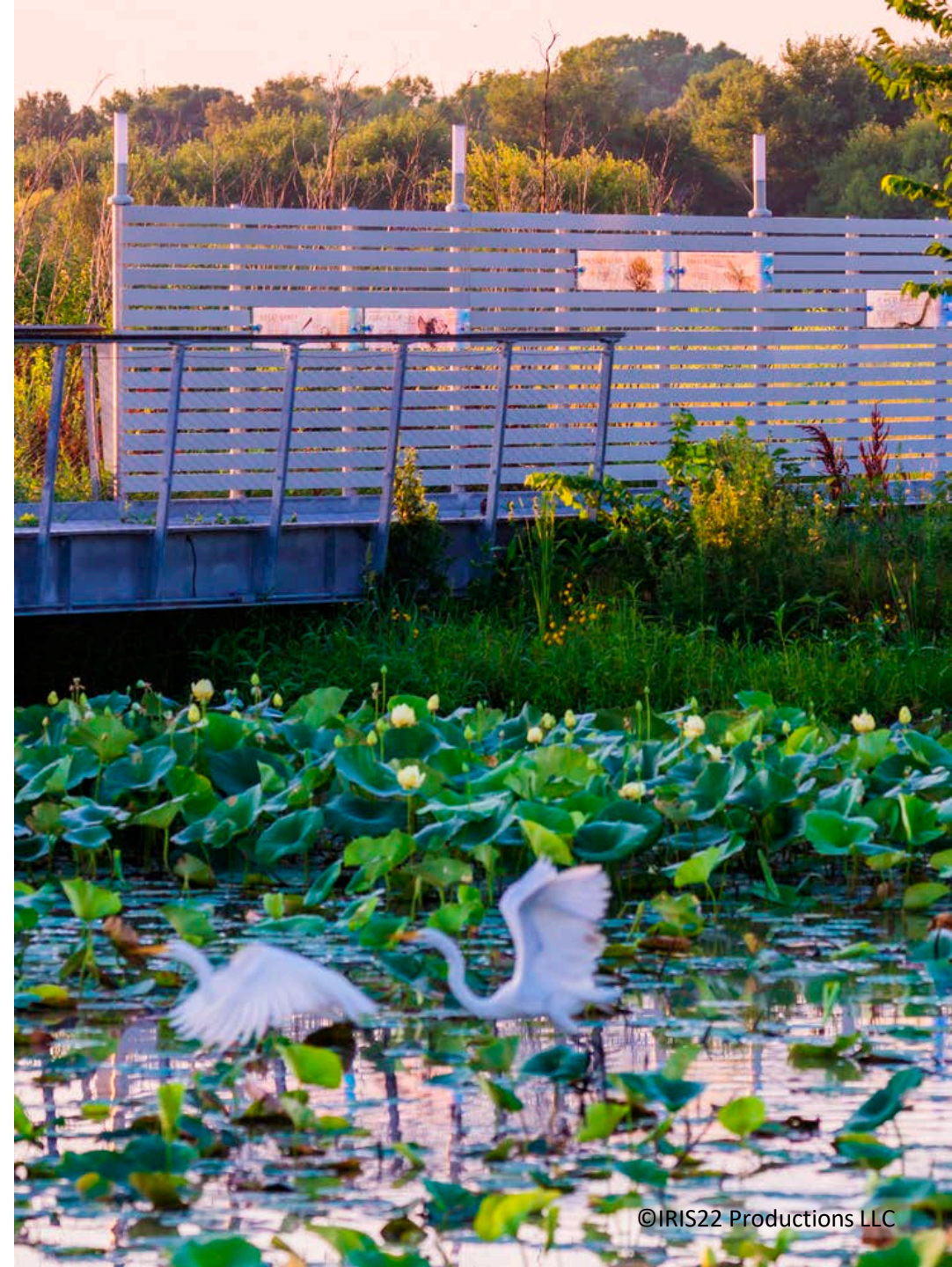


Pracht Wetlands Park Improvements – Phase 3



Departments of Park &
Recreation and Public Works
& Utilities

October 4, 2023

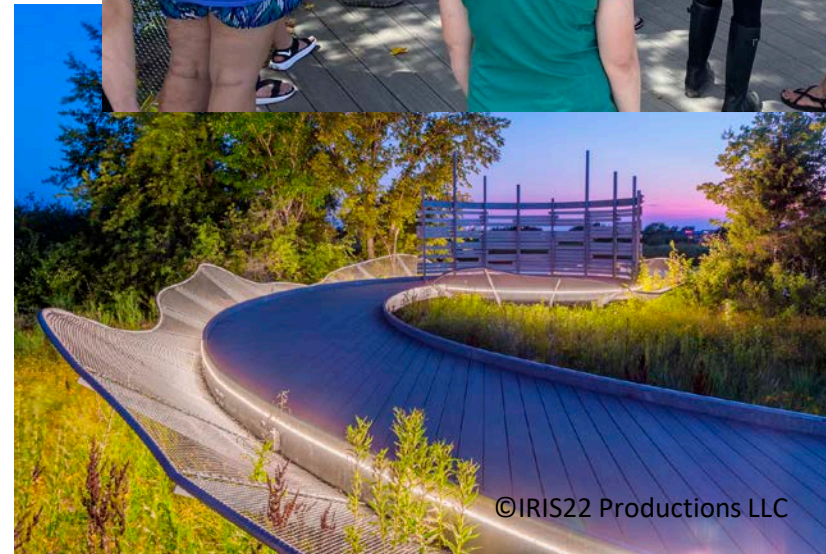


Pracht Wetlands Park



- **Background**

- Pracht Wetlands Park, is a 91-acre educational and recreational wetland park located near the intersection of W. 29th St. North & Maize Rd



© IRIS22 Productions LLC

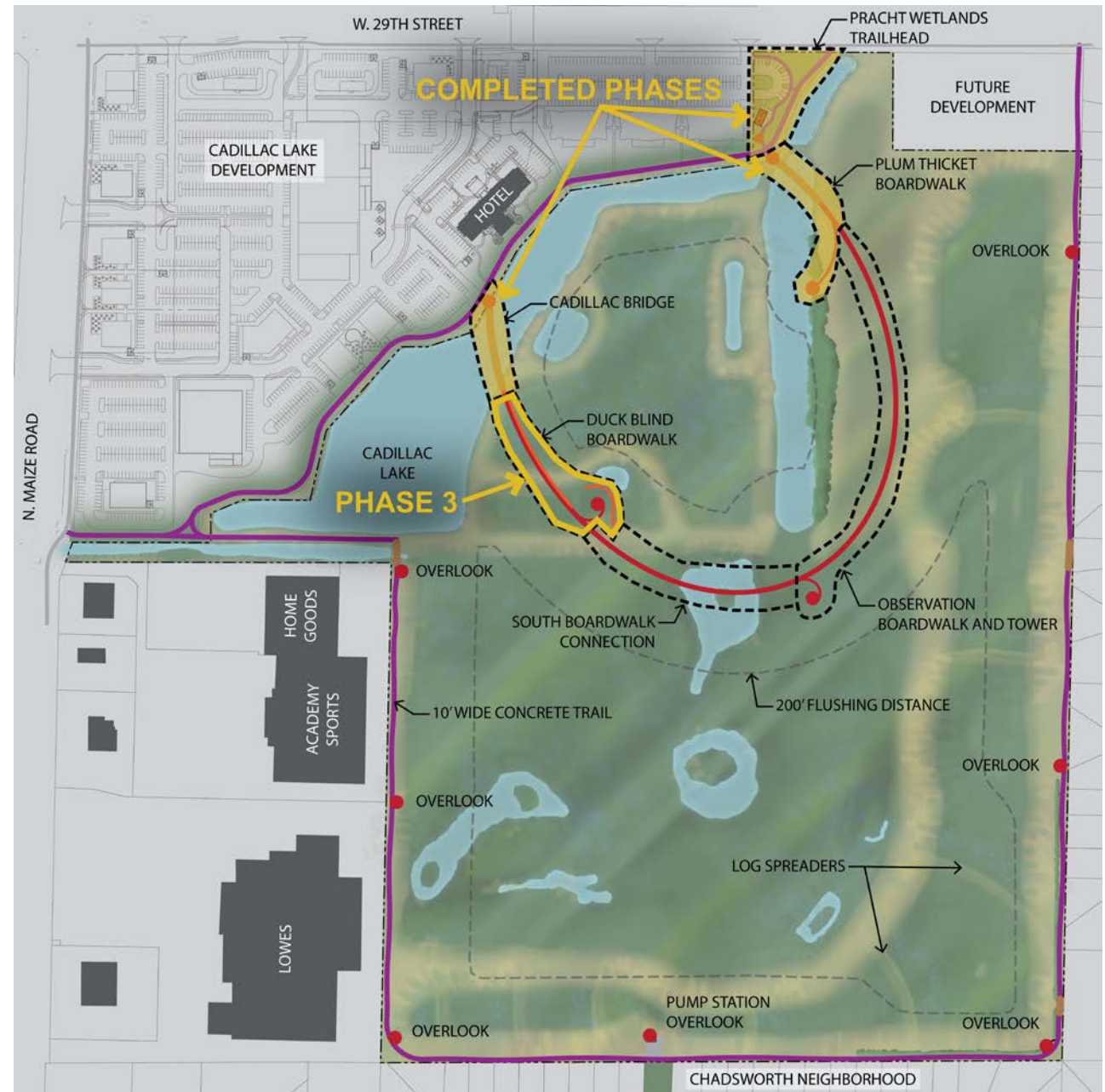


Pracht Wetlands Park



• Background

- In early 2019 the initial phases were completed, which included a portion of the steel boardwalk loop system and trailhead.
- The boardwalk and trailhead include educational signage and wildlife viewing areas.

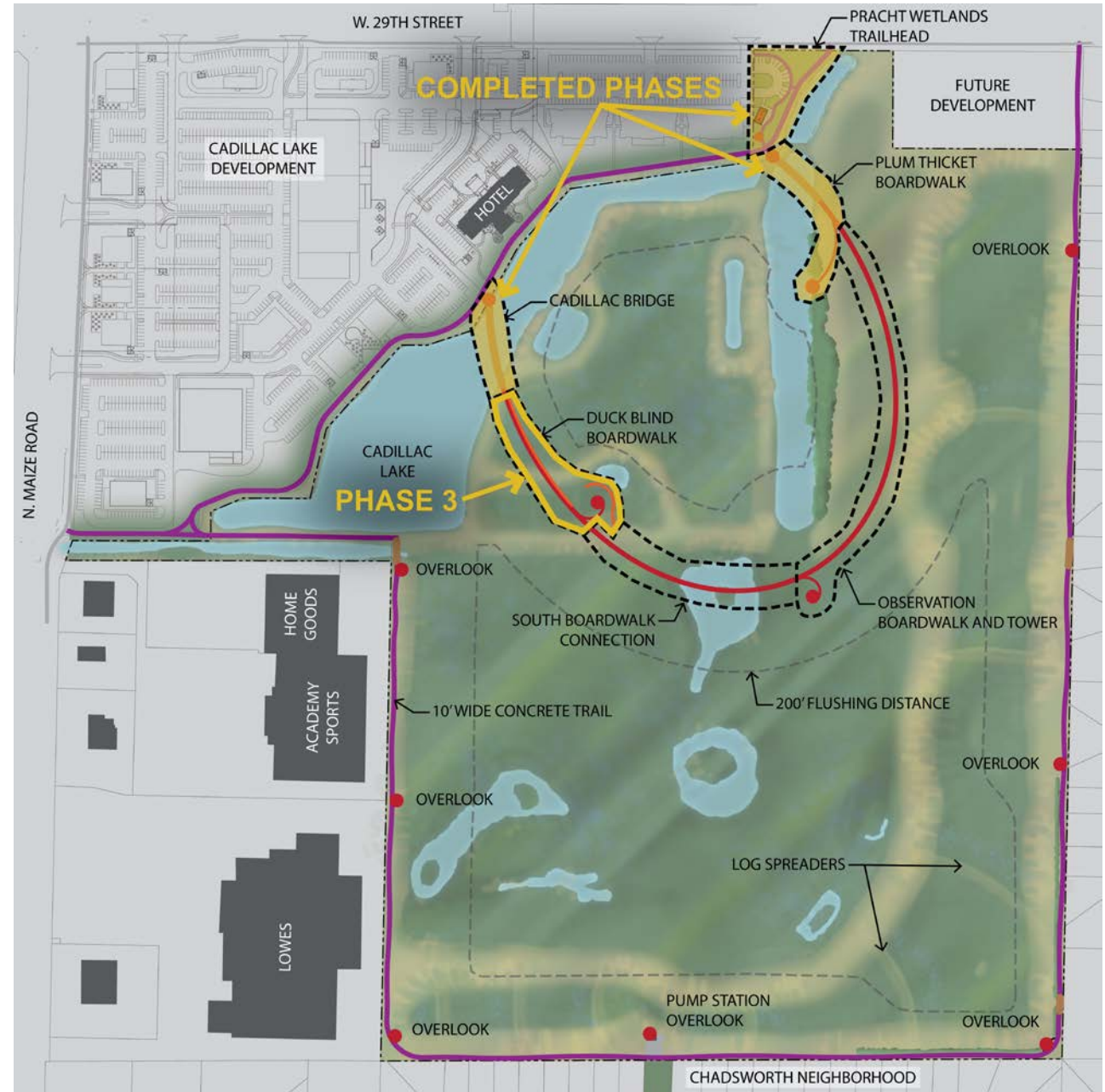


Pracht Wetlands Park



• Next Step

- Design and construction of Phase 3, which includes the continuation of the steel boardwalk, the duck blind pause point, and corresponding art components.



Pracht Wetlands Park



Analysis – A Contract Amendment with RDG Planning & Design, the design firm for the park Master Plan and Phase 1 & 2 construction plans, has been prepared for Phase 3 design.

Financial Considerations/Recommended Actions – The Adopted 2023-2032 CIP contains \$1,500,000 in for improvements and \$200,000 for art in 2023. Staff recommends initiating \$200,000 to begin design and project administration.



Pracht Wetlands Park Improvements – Phase 3



Departments of Park &
Recreation and Public Works
& Utilities

